



chic sheep
by Marly Bird

Saddle Shoulder Chic Cardigan

Perfect for relaxing on weekends, this comfortable merino wool cardigan doesn't skimp on style details. Cables are used on the cuffs and slope starting at center front and continuing around back of lower edge. The rolled neck, saddle shoulders and zip front complete a timeless look.



LW6131

©2018 Coats & Clark



knitting



Designed by Fiona Ellis

What you will need:

Red Heart® Chic Sheep by Marly Bird™:
6 (7, 8, 9, 9, 10) balls 5681 Suite **A** and 1 ball 5687 VIP **B**

Susan Bates® Circular Knitting Needle:
4.5 mm [US 7] 36" (91.5 cm)

Susan Bates® split lock stitch markers

Cable needle

Separating zipper 19½ (20, 20½, 21, 22, 23)" (49.5 (51, 52, 53.5, 56, 58.5) cm) long

Yarn needle

GAUGE: 22 sts and 30 rows = 4" (10 cm) over Stockinette st after blocking.
CHECK YOUR GAUGE. Use any size needles to obtain the gauge.

BUY YARN



RED HEART® Chic Sheep by Marly Bird™, Art. R170 100% Merino Wool available 3.5 oz (100 g), 186 yd (170 m) balls

Cardigan measures 35 (39, 43, 47, 51, 55)" (89 (99, 109, 119.5, 129.5, 139.5) cm) around chest and 26 (26¾, 27½, 28½, 29½, 30½)" (66 (68, 70, 72.5, 75, 77.5) cm).

NOTE

Cardigan is worked back and forth in rows. **A** circular needle is used for ease when working the collar and front edges.

SPECIAL STITCHES

Ssk (slip, slip, knit) = Slip next two sts knitwise to right needle, insert point of left needle through front of sts, knit these sts together through back loop.

M1 (make 1 inc) = Lift strand between needles to left-hand needle and knit strand through the back loop, twisting it to prevent a hole.

CABLE STITCHES

2/2 LC (2 over 2 left cross) = Slip next 2 sts to cable needle and hold in front, k2 from left needle, k2 from cable needle.

2/2 RC (2 over 2 right cross) = Slip next 2 sts to cable needle and hold in back, k2 from left needle, k2 from cable needle.

SPECIAL TECHNIQUE

W&T (wrap and turn) = Bring yarn to front, slip next st, turn, wrap yarn around slip st and slip same st back onto right-hand needle. On next row, work wrapped st by picking up wrap and working together with st on left-hand needle.

continued...





BACK

With **B**, cast on 110 (124, 134, 146, 160, 172) sts.

Row 1 (wrong side): K5 (4, 9, 7, 6, 4), [p4, k4] 12 (14, 14, 16, 18, 20) times, p4, k5 (4, 9, 7, 6, 4).

Row 2: P5 (4, 9, 7, 6, 4), [k4, p4] 12 (14, 14, 16, 18, 20) times, k4, p5 (4, 9, 7, 6, 4).

Row 3: Repeat Row 1.

Change to **A**.

Row 4: Repeat Row 2.

Row 5: Repeat Row 1.

Row 6: P5 (4, 9, 7, 6, 4), [2/2 RC, p4] 6 (7, 7, 8, 9, 10) times, 2/2 RC, [p4, 2/2 LC] 6 (7, 7, 8, 9, 10) times, p5 (4, 9, 7, 6, 4).

Row 7: Repeat Row 1.

Using **A** only, repeat Rows 2-7 twice more – 3 cabling rows / 19 total rows have been worked.

Shape Cable Panel

Row 1 (right side): K2 (2, 3, 3, 2, 2), work to last 2 (2, 3, 3, 2, 2) sts, k2 (2, 3, 3, 2, 2).

Row 2: P2 (2, 3, 3, 2, 2), work to last 2 (2, 3, 3, 2, 2) sts, p2 (2, 3, 3, 2, 2).

Row 3: K4 (4, 6, 6, 4, 4), work to last 4 (4, 6, 6, 4, 4) sts, k4 (4, 6, 6, 4, 4).

Row 4: P4 (4, 6, 6, 4, 4), work to last 4 (4, 6, 6, 4, 4) sts, p4 (4, 6, 6, 4, 4).

Row 5: K5 (4, 9, 7, 6, 4), work to last 5 (4, 9, 7, 6, 4) sts, k5 (4, 9, 7, 6, 4).

Row 6 (decrease row, wrong side): P5 (4, 9, 7, 6, 4), p2tog, p2, place marker, work to last 9 (8, 13, 11, 10, 8) sts, place marker, p2, p2tog through the back loop, p5 (4, 9, 7, 6, 4) – 108 (122, 132, 144, 158, 170) sts.

Row 7: Knit to marker, slip marker, k2, work to 2 sts before next marker, k2, slip marker, knit to end.

Row 8: Purl to marker, slip marker, p2, work to 2 sts before next marker, p2, slip marker, purl to end.

Row 9: K to marker, slip marker, k4, work to 4 sts before next marker, k4, slip marker, knit to end.

Row 10: P to marker, slip marker, p4, work to 4 sts before next marker, p4, slip marker, purl to end.

Row 11: K to marker, slip marker, k4, work to 4 sts before next marker, k4, slip marker, knit to end.

Row 12 (decrease row, wrong side): P to marker, remove marker, p4, p2tog, p2, place marker, work to 8 sts before marker, place marker, p2, p2tog through the back loop, p4, remove marker, p to end – 106 (120, 130, 142, 156, 168) sts.

Repeat Rows 7-12 only 4 (5, 5, 6, 7, 8) more times – 1 cable column remaining, 98 (110, 120, 130, 142, 152) sts.

Complete Center Cable

Next 6 rows:

Row 1 (right side): Knit to marker, slip marker, k2, p2, k4, p2, knit to end.

Row 2: Purl to marker, slip marker, k2, p4, k2, purl to end.

Row 3: Knit.

Row 4: Purl.

Row 5: Knit to marker, k4, 2/2 RC, knit to end.

Row 6: Purl to marker, remove marker, p5, p2tog, p5, remove marker, purl to end – 97 (109, 119, 129, 141, 151) sts.

Work evenly in Stockinette st until Back measures 16½ (16¾, 17, 17½, 18, 18½)'' (42, 42.5, 43, 44.5, 45.5, 47) cm, ending after a wrong side row.

Shape Armholes

Row 1 (right side): Bind off 2 (2, 3, 4, 5, 6) sts, knit to end – 95 (107, 116, 125, 136, 145) sts.

Row 2: Bind off 2 (2, 3, 4, 5, 6) sts, purl

to end – 93 (105, 113, 121, 131, 139) sts.

Row 3: Bind off 1 (2, 3, 4, 4, 6) sts, knit to end – 92 (103, 110, 117, 127, 133) sts.

Row 4: Bind off 1 (2, 3, 4, 4, 6) sts, purl to end – 91 (101, 107, 113, 123, 127) sts.

Row 5: Bind off 1 (2, 2, 3, 4, 5) sts, knit to end – 90 (99, 105, 110, 119, 122) sts.

Row 6: Bind off 1 (2, 2, 3, 4, 5) sts, purl to end – 89 (97, 103, 107, 115, 117) sts.

Row 7: Bind off 1 (2, 2, 3, 4, 4) sts, knit to end – 88 (95, 101, 104, 111, 113) sts.

Row 8: Bind off 1 (2, 2, 3, 4, 4) sts, purl to end – 87 (93, 99, 101, 107, 109) sts.

Row 9: K1, ssk, knit to last 3 sts, k2tog, k1 – 85 (91, 97, 99, 105, 107) sts.

Work evenly in Stockinette st until armhole measures 6½ (7, 7½, 8, 8½, 9)'' (16.5 (18, 19, 20.5, 21.5, 23) cm), ending after a wrong side row.

Shape Shoulders

Row 1 (right side): Bind off 8 (8, 9, 9, 10, 10), knit to end – 77 (83, 88, 90, 95, 97) sts.

Row 2: Bind off 8 (8, 9, 9, 10, 10) sts, purl to end – 69 (75, 79, 81, 85, 87) sts.

Row 3: Bind off 8 (8, 9, 9, 10, 10) sts, knit to end – 61 (67, 70, 72, 75, 77) sts.

Row 4: Bind off 8 (8, 9, 9, 10, 10) sts, purl to end – 53 (59, 61, 63, 65, 67) sts.

Row 5: Bind off 7 (9, 9, 9, 9, 9) sts, knit to end – 46 (50, 52, 54, 56, 58) sts.

Row 6: Bind off 7 (9, 9, 9, 9, 9) sts, purl to end – 39 (41, 43, 45, 47, 49) sts.

Bind off all remaining sts.

RIGHT FRONT

With **B**, cast on 55 (62, 67, 73, 80, 86) sts.

Row 1 (wrong side): K5 (4, 9, 7, 6, 4), [p4, k4] 5 (6, 6, 7, 8, 9) times, p4, k6.

Row 2: P6, [k4, p4] 5 (6, 6, 7, 8, 9) times, k4, p5 (4, 9, 7, 6, 4).

Row 3: Repeat Row 1. Change to **A**.

Row 4: Repeat Row 2.

Row 5: Repeat Row 1.

Row 6: P6, [2/2 LC, p4] 5 (6, 6, 7, 8, 9) times, 2/2 LC, p5 (4, 9, 7, 6, 4).

Row 7: Repeat Row 1.

Using **A** only, repeat Rows 2-7 twice more – 3 cabling rows / 19 total rows have been worked.

Shape Cable panel

Row 1 (right side): Work to last 2 (2, 3, 3, 2, 2) sts, k2 (2, 3, 3, 2, 2).

Row 2: P2 (2, 3, 3, 2, 2), work to end.

Row 3: Work to last 4 sts, k4 (4, 6, 6, 4, 4).

Row 4: P4 (4, 6, 6, 4, 4), work to end.

Row 5: P6, [2/2 LC, p4] 5 (6, 6, 7, 8, 9) times, 2/2 LC, knit rem 5 (4, 9, 7, 6, 4) sts.

Row 6 (decrease row, wrong side): P5 (4, 9, 7, 6, 4), p2tog, p2, place marker, work to end – 54 (61, 66, 72, 79, 85) sts.

Row 7: Work to 2 sts before marker, k2, slip marker, knit to end.

Row 8: Purl to marker, slip marker, p2, work to end.

Row 9: Work to 4 sts before marker, k4, slip marker, knit to end.

Row 10: Purl to marker, slip marker, p4, work to end.

Row 11: Work to 4 sts before marker, k4, slip marker, knit to end.

Row 12 (decrease row, wrong side): Purl to marker, remove marker, p4, p2tog, p2, place marker, purl to end – 53 (60, 65, 71, 78, 84) sts.

continued...





Repeat Rows 7-12 only 4 (5, 5, 6, 7, 8) more times – all cable columns have been completed, 49 (55, 60, 65, 71, 76) sts.

Next 6 rows:

Row 1 (right side): P4, knit to end.

Row 2: Purl to last 4 sts, k4.

Row 3: P2, knit to end.

Row 4: Purl to last 2 sts, k2.

Row 5: Knit.

Row 6: Purl.

Work evenly in Stockinette st until Right Front measures 16½ (16¾, 17, 17½, 18, 18½)" (42 (42.5, 43, 44.5, 46, 47) cm), ending after a right side row.

Shape Armhole

Row 1 (wrong side): Bind off 2 (2, 3, 4, 5, 6) sts, purl to end – 47 (53, 57, 61, 66, 70) sts.

Row 2: Knit.

Row 3: Bind off 1 (2, 3, 4, 4, 6) sts, p to end – 46 (51, 54, 57, 62, 64) sts.

Row 4: Knit.

Row 5: Bind off 1 (2, 2, 3, 4, 5) sts, p to end – 45 (49, 52, 54, 58, 59) sts.

Row 6: Knit.

Row 7: Bind off 1 (2, 2, 3, 4, 4) sts, p to end – 44 (47, 50, 51, 54, 55) sts.

Row 8: Knit to last 4 sts, k2tog, k2 – 43 (46, 49, 50, 53, 54) sts.

Work evenly until armhole measures 3 (3¼, 3½, 3½, 4, 4½)" (7.5 (8.5, 9, 9, 10, 11.5) cm) from beginning of shaping, ending after a wrong side row.

Shape V-Neck

Row 1 (dec row, right side): K2, ssk, knit to end – 42 (45, 48, 49, 52, 53) sts.

Row 2 (dec row, wrong side): Purl to

last 4 sts, p2tog through the back loop, p2 – 41 (44, 47, 48, 51, 52) sts.

Repeat the last 2 rows 6 (6, 6, 6, 7, 8) more times – 29 (32, 35, 36, 37, 36) sts.

Next 2 rows:

Row 1 (decrease row, right side): K2, ssk, knit to end – 28 (31, 34, 35, 36, 35) sts.

Row 2: Purl.

Repeat the last 2 rows 5 (6, 7, 8, 7, 6) more times – 23 (25, 27, 27, 29, 29) sts.

Work evenly in Stockinette st until armhole measures 6½ (7, 7½, 8, 8½, 9)" (16.5 (18, 19, 20.5, 21.5, 23) cm), ending after a right side row.

Shape Shoulder

Row 1 (wrong): Bind off 8 (8, 9, 9, 10, 10) sts, p to end – 15 (17, 18, 18, 19, 19) sts.

Row 2: Knit.

Row 3: Bind off 8 (8, 9, 9, 10, 10) sts, p to end – 7 (9, 9, 9, 9, 9) sts.

Row 4: Purl.

Bind off all remaining sts.

LEFT FRONT

With **B**, cast on 55 (62, 67, 73, 80, 86) sts.

Row 1 (wrong side): K6, [p4, k4] 5 (6, 6, 7, 8, 9) times, p4, k5 (4, 9, 7, 6, 4).

Row 2: P5 (4, 9, 7, 6, 4), [k4, p4] 5 (6, 6, 7, 8, 9) times, k4, p6.

Row 3: Repeat Row 1.

Change to **A**.

Row 4: Repeat Row 2.

Row 5: Repeat Row 1

Row 6: P5 (4, 9, 7, 6, 4), [2/2 RC, p4] 5 (6, 6, 7, 8, 9) times, 2/2 RC, p6.

Row 7: Repeat row 1.

Using **A** only, repeat Rows 2-7 twice more – 3 cabling rows / 19 total rows have been worked.

Shape Cable panel

Row 1 (right side): K2 (2, 3, 3, 2, 2), work to end.

Row 2: Work to last 2 (2, 3, 3, 2, 2) sts, p2 (2, 3, 3, 2, 2).

Row 3: K4 (4, 6, 6, 4, 4), work to end.

Row 4: Work to last 4 (4, 6, 6, 4, 4) sts, p4 (4, 6, 6, 4, 4).

Row 5: K5 (4, 9, 7, 6, 4), 2/2 RC, [p4, 2/2 RC] 5 (6, 6, 7, 8, 9) times, p6.

Row 6 (decrease row, wrong side):

Work to last 9 (8, 13, 11, 10, 8) sts, place marker, p2, p2tog through the back loop, p5 (4, 9, 7, 6, 4) – 54 (61, 66, 72, 79, 85) sts.

Row 7: Knit to marker, slip marker, k2, work to end.

Row 8: Work to 2 sts before marker, p2, slip marker, purl to end.

Row 9: Knit to marker, slip marker, k4, work to end.

Row 10: Work to 4 sts before marker, p4, slip marker, purl to end.

Row 11: Knit to marker, slip marker, k4, work to end.

Row 12 (dec row, wrong side): Work to 8 sts before marker, place marker, p2, p2tog through the back loop, p4, remove marker, purl to end – 53 (60, 65, 71, 78, 84) sts.

Repeat Rows 7-12 only 4 (5, 5, 6, 7, 8) more times – all cable columns have been completed, 49 (55, 60, 65, 71, 76) sts.

Next 6 rows:

Row 1 (right side): Knit to last 4 sts, p4.

Row 2: K4, purl to end.

Row 3: Knit to last 2 sts, p2.

Row 4: K2, purl to end.

Row 5: Knit.

Row 6: Purl.

Work evenly in Stockinette st until Right Front measures 16½ (16¾, 17, 17½, 18, 18½)" (42 (42.5, 43, 44.5, 46, 47) cm), ending after a wrong side row.

Shape Armhole

Row 1 (right side): Bind off 2 (2, 3, 4, 5, 6) sts, knit to end – 47 (53, 57, 61, 66, 70) sts.

Row 2: Purl.

Row 3: Bind off 1 (2, 3, 4, 4, 6) sts, knit to end – 46 (51, 54, 57, 62, 64) sts.

Row 4: Purl.

Row 5: Bind off 1 (2, 2, 3, 4, 5) sts, knit to end – 45 (49, 52, 54, 58, 59) sts.

Row 6: Purl.

Row 7: Bind off 1 (2, 2, 3, 4, 4) sts, knit to end – 44 (47, 50, 51, 54, 55) sts.

Row 8: Purl.

Row 9: K1, ssk, knit to end – 43 (46, 49, 50, 53, 54) sts.

Work evenly until armhole measures 3 (3¼, 3½, 3½, 4, 4½)" (7.5 (8.5, 9, 9, 10, 11.5) cm) from beginning of shaping, ending after a wrong side row.

continued...





Shape V-Neck

Row 1 (dec row, right side): Knit to last 4 sts, k2tog, k2 – 42 (45, 48, 49, 52, 53) sts.

Row 2 (dec row, wrong side): P2, p2tog, purl to end – 41 (44, 47, 48, 51, 52) sts. Repeat the last 2 rows 6 (6, 6, 6, 7, 8) more times – 29 (32, 35, 36, 37, 36) sts.

Next 2 rows:

Row 1 (decrease row, right side): Knit to last 4 sts, k2tog, k2 – 28 (31, 34, 35, 36, 35) sts.

Row 2: Purl. Repeat the last 2 rows 5 (6, 7, 8, 7, 6) more times – 23 (25, 27, 27, 29, 29) sts.

Work evenly in Stockinette st until armhole measures 6½ (7, 7½, 8, 8½, 9)" (16.5 (18, 19, 20.5, 21.5, 23) cm), ending after a wrong side row.

Shape Shoulder

Row 1 (right side): Bind off 8 (8, 9, 9, 10, 10) sts, knit to end – 15 (17, 18, 18, 19, 19) sts.

Row 2: Purl.
Row 3: Bind off 8 (8, 9, 9, 10, 10) sts, knit to end – 7 (9, 9, 9, 9, 9) sts.
Row 4: Purl.
Bind off all remaining sts.

SLEEVES (make 2)

With **B** cast on 62 (62, 62, 66, 66, 70) sts.

Row 1 (wrong side): K5 (5, 5, 7, 7, 1), [p4, k4] 6 (6, 6, 6, 6, 8) times, p4, k5 (5, 5, 7, 7, 1).

Row 2: P5 (5, 5, 7, 7, 1), [k4, p4] 6 (6, 6, 6, 6, 8) times, k4, p5 (5, 5, 7, 7, 1).

Row 3: Repeat Row 1.
Change to **A**.

Row 4 (right side): Repeat Row 2.

Row 5: Repeat Row 1.

Row 6: P5 (5, 5, 7, 7, 1) [2/2 RC, p4] 3 (3, 3, 3, 3, 4) times, 2/2 RC, [p4, 2/2 LC] 3 (3, 3, 3, 3, 4) times, p5 (5, 5, 7, 7, 1).

Row 7: Repeat row 1.
Using **A** only, repeat Rows 2-7 twice more – 3 cabling rows / 19 total rows have been worked.

Shape Cable panel

Row 1 (right side): K2 (2, 2, 3, 3, 1), work to last 2 (2, 2, 3, 3, 1) sts, k2 (2, 2, 3, 3, 1).

Row 2: P3 (3, 3, 4, 4, 2), work to last 3 (3, 3, 4, 4, 2) sts, purl to end.

Row 3: K5 (5, 5, 7, 7, 2), work to last 5 (5, 5, 7, 7, 2) sts, knit to end.

Row 4: P5 (5, 5, 7, 7, 2), work to last 5 (5, 5, 7, 7, 2) sts, purl to end.

Row 5: K6 (6, 6, 8, 8, 2), work to last 6 (6, 6, 8, 8, 2) sts, knit to end.

Row 6 (dec row, wrong side): P6 (6, 6, 8, 8, 2), p2tog, p2, place marker, work to last 10 (10, 10, 12, 12, 6) sts, place marker, p2, p2tog through the back loop, p to end – 60 (60, 60, 64, 64, 68) sts.

Row 7: Knit to marker, slip marker, k2, work to 2 sts before next marker, k2, slip marker, knit to end.

Row 8: Purl to marker, slip marker, p2, work to 2 sts before next marker, p2, slip marker, purl to end.

Row 9 (increase row, right side): K1, M1, knit to marker, slip marker, k4, work to 4 sts before next marker, k4, slip marker, knit to last st, M1, k1 – 62 (62, 62, 66, 66, 70) sts.

Row 10: Purl to marker, slip marker, p4, work to 4 sts before next marker, p4, slip marker, purl to end.

Row 11: Knit to marker, slip marker, k4, work to 4 sts before next marker, k4, slip marker, knit to end.

Row 12 (decrease row, wrong side): Purl to marker, remove marker, p4, p2tog, p2, place marker, work to 8 sts before marker, place marker, p2, p2tog through

the back loop, p4, remove marker, purl to end – 60 (60, 60, 64, 64, 68) sts.

Repeat Rows 7-12 only 1 (1, 1, 1, 1, 2) more time(s) – 1 cable column remaining, 60 (60, 60, 64, 64, 68) sts.

Complete Center Cable

Next 6 rows:

Row 1 (right side): Knit to marker, slip marker, k2, p2, k4, p2, knit to end.

Row 2: Purl to marker, slip marker, k2, p4, k2, purl to end.

Row 3: K1, M1, knit to last st, M1, k1 – 62 (62, 62, 66, 66, 70) sts.

Row 4: Purl.

Row 5: Knit to marker, k4, 2/2 RC, knit to end.

Row 6: Purl to marker, remove marker, p5, p2tog, p5, remove marker, purl to end – 61 (61, 61, 65, 65, 69) sts.

Complete Sleeve Shaping

Work 4 rows evenly in Stockinette st.

Next row (increase row, right side): K1, M1, knit to last st, M1, k1 – 63 (63, 63, 67, 67, 71).

Repeat this increase every 10 (8, 8, 8, 6, 6) rows 7 (10, 4, 6, 18, 17) more times, then every 8 (6, 6, 6, 4, 4) rows 3 (3, 12, 10, 1, 2) more times – 81 (87, 93, 97, 103, 107) sts.

Work evenly in Stockinette st until Sleeve measures 17¾ (18¼, 19¼, 19¾, 20¼, 20¾)" (45 (46.5, 49, 50, 51.5, 53) cm) from beginning, ending after a wrong side row.

Shape Sleeve Cap

Next 24 rows:

Row 1 (right side): Bind off 2 (2, 3, 4, 5, 6) sts, knit to end – 79 (85, 90, 93, 98, 101) sts.

Row 2: Bind off 2 (2, 3, 4, 5, 6) sts, purl to end – 77 (83, 87, 89, 93, 95) sts.

Row 3: Bind off 1 (2, 3, 4, 4, 6) sts, knit to end – 76 (81, 84, 85, 89, 89) sts.

Row 4: Bind off 1 (2, 3, 4, 4, 6) sts, purl to end – 75 (79, 81, 81, 85, 83) sts.

Row 5: Bind off 1 (2, 3, 3, 4, 4) sts, knit to end – 74 (77, 78, 78, 81, 79) sts.

Row 6: Bind off 1 (2, 3, 3, 4, 4) sts, purl to end – 73 (75, 75, 75, 77, 75) sts.

Row 7: Bind off 1 (2, 2, 3, 4, 3) sts, knit to end – 72 (73, 73, 72, 73, 72) sts.

Row 8: Bind off 1 (2, 2, 3, 4, 3) sts, purl to end – 71 (71, 71, 69, 69, 69) sts.

Row 9: Bind off 4 (4, 4, 3, 3, 3) sts, knit to end – 67 (67, 67, 66, 66, 66) sts.

Row 10: Bind off 4 (4, 4, 3, 3, 3) sts, purl to end – 63 (63, 63, 63, 63, 63) sts.

Rows 11-16: Repeat Rows 9 and 10 only 3 more times – 39 (39, 39, 45, 45, 45) sts.

Row 17: Bind off 3 (3, 3, 4, 4, 4) sts, knit to end – 36 (36, 36, 41, 41, 41) sts.

Row 18: Bind off 3 (3, 3, 4, 4, 4) sts, purl to end – 33 (33, 33, 37, 37, 37) sts.

Rows 20-24: Repeat Rows 17 and 18 only twice more – 21 sts.

Saddle Shoulder Extension

Work evenly in Stockinette st across remaining 21 sts for 4 (4¼, 4¾, 4¾, 5, 5)" (10 (11, 12, 12, 12.5, 12.5) cm). Bind off all sts.

continued...





FINISHING

Block pieces measurements.

Front Edgings

With **B** and right side facing, pick up and k107 (107, 111, 115, 121, 125) sts along Right Front edge. Knit 1 row, then bind off all sts.

Work Left Front edge the same.

Assembly

Sew Zipper to center front opening.

Sew Saddle Shoulder Extensions to bound off shoulder shaping on Back and Front pieces, then sew Sleeve caps into armholes.

Sew side and Sleeve seams.

Collar

With **A** and wrong side facing and beginning at bottom of V-neck shaping on Left Front; pick up and k30 (33, 39, 39, 42, 45) sts along left front neck edge, 22 sts across left sleeve extension, 38 (40, 44, 44, 46, 48) sts across back neck, 22 sts across right sleeve extension, and 30 (33, 39, 39, 42, 45) sts down right front neck - 142 (150, 166, 166, 174, 182) sts total.

Note: Picking up with wrong side facing will create a ridge on the right side of the garment that will be hidden when the Collar is folded over.

Row 1 (right side): K1, [p4, k4] to last 5 sts, p4, k1.

Row 2: K5 [p4, k4] to last 9 sts, p4, k5.

Rows 3-6: Repeat Rows 1 and 2 twice more.

Row 7 (cable cross row): K1, [p4, 2/2 RC] to last 5 sts, p4, k1.

Row 8: Repeat Row 2.

Shape Collar

Work short rows in established pattern as follows:

Rows 1 and 2: Work to last 5 sts, W&T.

Rows 3 and 4: Work to 8 sts before wrapped st, W&T.

Repeat rows 3 and 4 only 5 (5, 6, 6, 7, 7) more times, working cable crosses every 6 rows as in Body pattern.

Next 2 rows: Work to end of row, picking up and all wraps and working them together with their wrapped st.

Optional: For longer collar than pictured, work 1" (2.5 cm) evenly in established pattern, ending after a wrong side row.

Change to **B**.

Work 3 rows evenly in established pattern.

Bind off all sts loosely in pattern.

Fold Collar back and block in place. Weave in all loose ends. Press lightly.

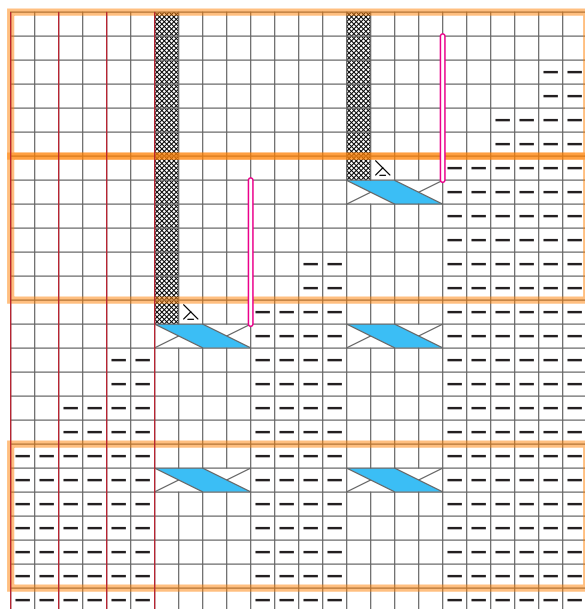
ABBREVIATIONS

A, B = Color A, Color B; **dec** = decrease; **inc** = increase; **k** = knit; **k2tog** = knit next 2 sts together; **p** = purl; **p2tog** = purl next 2 sts together; **st(s)** = stitch(es); **[]** = work directions in brackets the number of times specified; *** or **** = repeat whatever follows the * or ** as indicated.

See next 5 pages for charts, schematics and alternate photo

Note from Marly: I would like to thank my long time friend Fiona Ellis, for her contribution to the Chic Sheep by Marly Bird™ collection. Fiona is well known for her use of cables and unique style in knitted garments and boy did she deliver a sweater with the perfect combination of both. This is just one of many wonderful designs by Fiona, to learn more about her and her designs by visiting fionaellisonline.com



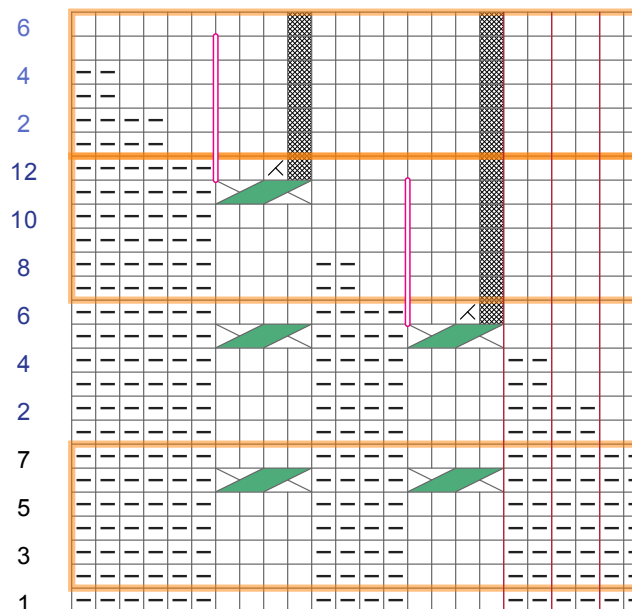


2 (2, 3, 3, 2, 2) sts
 2 (2, 3, 3, 2, 2) sts
 1 (0, 3, 1, 2, 0) sts

K5 (4, 9, 7, 6, 4)

x 6 (7, 7, 8, 9, 10)

RIGHT FRONT



x 6 (7, 7, 8, 9, 10)

LEFT FRONT

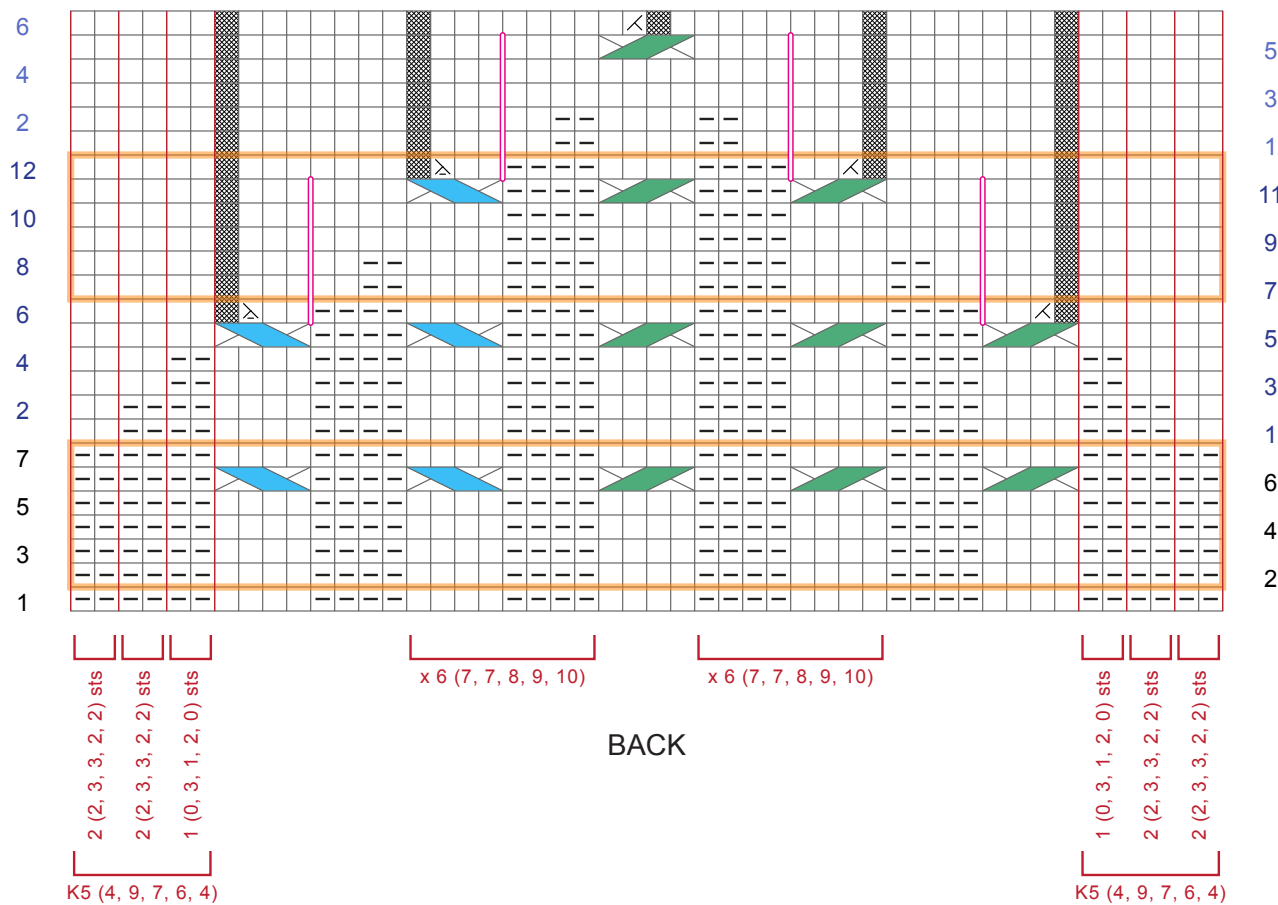
1 (0, 3, 1, 2, 0) sts
 2 (2, 3, 3, 2, 2) sts
 2 (2, 3, 3, 2, 2) sts

K5 (4, 9, 7, 6, 4)

Symbol Key

- K on right side, P on wrong side
- P on RS, k on WS
- P on RS, k on WS
- P2tog
- P2tog through the back loop
- No Stitch
- 2/2 LC (2 over 2 left cross)
- 2/2 RC (2 over 2 right cross)
- Repeat
- Marker

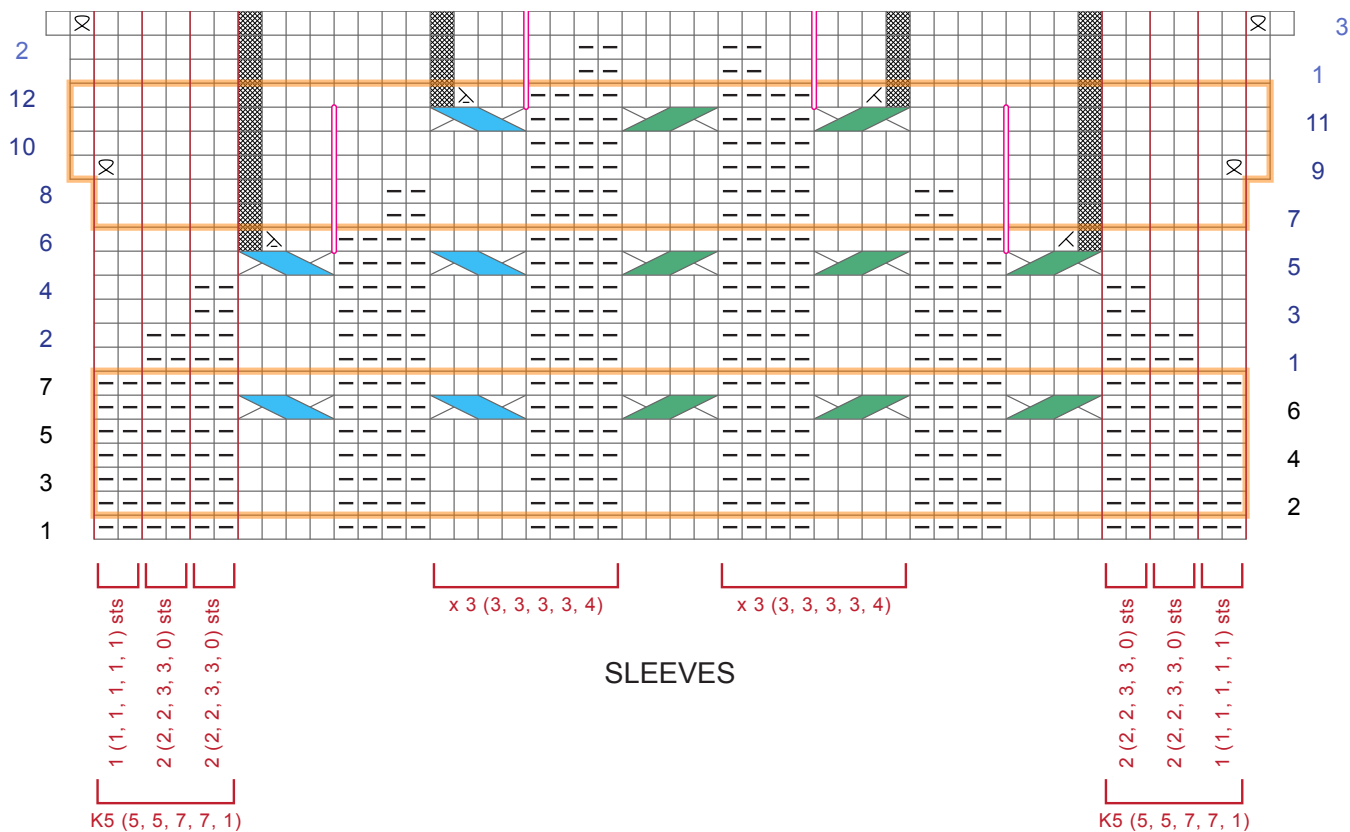




Symbol Key

- K on right side, P on wrong side
- P on RS, k on WS
- P on RS, k on WS
- P2tog
- P2tog through the back loop
- No Stitch
- 2/2 LC (2 over 2 left cross)
- 2/2 RC (2 over 2 right cross)
- Repeat
- Marker





Symbol Key

- K on right side, P on wrong side
- No Stitch
- P on RS, k on WS
- 2/2 LC (2 over 2 left cross)
- P on RS, k on WS
- 2/2 RC (2 over 2 right cross)
- P2tog
- Repeat
- P2tog through the back loop
- Marker



