

# kid's hoodie



## WHAT YOU'LL NEED

MEASUREMENTS	years	2	4	6	8	10
To Fit Chest	ins	21½	23½	25½	27½	29½
	cm	55	60	65	70	75
Actual Size	ins	25½	27½	29½	31½	33½
	cm	65	70	75	80	85
Length	ins	15½	17	18½	20	21½
	cm	39	43	47	51	55
Sleeve Length	ins	10	12	13	15	15½
	cm	25	30	33	38	40

## MATERIALS

AUSTRALIAN SUPERFINE MERINO BY CLECKHEATON 

8 PLY 2¼oz (65g) balls

Quantity (47 Denim)                      6      7      8      9      10

Use only the yarn specified. Other yarns are likely to produce different results.

Quantities are approximate as they can vary between knitters. Check all yarn is from the same dye lot.

## NEEDLES AND EXTRAS

- 1 pair each size 6 (4mm) and 3 (3.25mm) knitting needles or size needed to give correct gauge.
- 5 (5-6-6-6) buttons.
- yarn needle for sewing seams.

## GAUGE

22 sts and 30 rows to 4" or 10cm over stockinette st, using larger needles.

To check your gauge, using larger needles, cast on 33 sts.

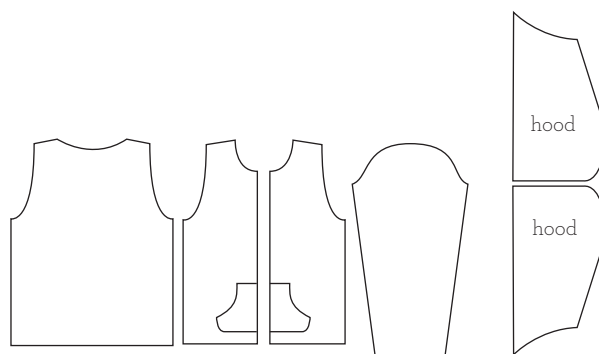
Work 44 rows stockinette st. Bind off loosely.

Check your gauge carefully.

If less sts to 4" or 10cm use smaller needles, if more sts use larger needles.

## SPECIAL ABBREVIATION

**M1** = Make one st - pick up loop which lies before next st, place on left-hand needle and knit into back of loop.



AUSTRALIAN  
SUPERFINE  
MERINO

by Cleckheaton

GROWN IN AUSTRALIA AND MADE BY:

Wangaratta Woollen Mills



**BACK**

Using larger needles, cast on **74** (78-86-90-94) sts.

**BEG LOWER BAND -**

**1st row** - K2, \* P2, K2, rep from \* to end.

**2nd row** - P2, \* K2, P2, rep from \* to end.

Last 2 rows form rib.

Rep last 2 rows **7** (9-9-10-10) times, ending with a 2nd row and

**dec** (inc-**dec**-inc-**inc**) one st in center of this row ... **73** (79-85-91-95) sts and **16** (20-20-22-22) rows rib in all.

Work in stockinette st until Back measures **10** (11-12-13-14½)" or **25** (28-30-33-36) cm from beg, ending with a purl row.

**SHAPE ARMHOLES -**

Bind off **3** (3-3-4-4) sts at beg of next 2 rows ... **67** (73-79-83-87) sts.

**Next row** - K3, K2tog, knit to last 5 sts, sl 1, K1, pssso, K3 ... **65** (71-77-81-85) sts.

Dec one st (as before) at each end of every other row until **61** (67-71-75-77) sts rem.

Work **29** (33-35-39-41) rows.

**SHAPE BACK NECK -**

**Next row** - K19 (22-23-25-25), bind off next **23** (23-25-25-27) sts, knit to end.

Cont on these **19** (22-23-25-25) sts for left side of back neck.

Dec one st at neck edge in next 5 rows ... **14** (17-18-20-20) sts.

Work 1 row.

**SHAPE SHOULDER -**

Bind off **5** (6-6-7-7) sts at beg of next row.

Work 1 row.

Rep last 2 rows once.

Bind off rem **4** (5-6-6-6) sts.

With wrong side facing, join yarn to rem **19** (22-23-25-25) sts for right side of back neck.

Dec one st at neck edge in next 5 rows ... **14** (17-18-20-20) sts.

**SHAPE SHOULDER -**

Complete as for other shoulder.

**LEFT FRONT**

Using larger needles, cast on **31** (35-35-39-43) sts.

**BEG LOWER BAND -**

**1st row** - \* K2, P2, rep from \* to last 3 sts, K3.

**2nd row** - P3, \* K2, P2, rep from \* to end.

Last 2 rows form rib for Left Front.

Rep last 2 rows **7** (9-9-10-10) times, ending with a 2nd row and inc **4** (2-4-4-2) sts evenly across this row ... **35** (37-39-43-45) sts and **16** (20-20-22-22) rows rib in all.

Work in stockinette st until Left Front measures same as Back to beg of armholes, ending with a purl row.

**SHAPE ARMHOLE -**

**Next row** - Bind off **3** (3-3-4-4) sts, knit to end ... **32** (34-36-39-41) sts.

Work 1 row.

**Next row** - K3, K2tog, knit to end ... **31** (33-35-38-40) sts.

Dec one st (as before) at armhole edge in every other row until **29** (31-32-35-36) sts rem.

Work **20** (24-24-28-28) rows.

**SHAPE NECK -**

**Next row** (wrong side) - Bind off 8 sts, purl to end ... **21** (23-24-27-28) sts.

Dec one st at neck edge in next 3 rows, then in every other row **3** (2-2-3-3) times, then in every 4th row **1** (1-1-1-2) times ... **14** (17-18-20-20) sts.

Work **1** (3-5-3-1) rows.

**SHAPE SHOULDER -**

Bind off **5** (6-6-7-7) sts at beg of next row.

Work 1 row.

Rep last 2 rows once.

Bind off rem **4** (5-6-6-6) sts.

**RIGHT FRONT**

Using larger needles, cast on **31** (35-35-39-43) sts.

**BEG LOWER BAND -**

**1st row** - K3, \* P2, K2, rep from \* to end.

**2nd row** - \* P2, K2, rep from \* to last 3 sts, P3.

Last 2 rows form rib for Right Front.

Rep last 2 rows **7** (9-9-10-10) times, ending with a 2nd row and inc **4** (2-4-4-2) sts evenly across this row ... **35** (37-39-43-45) sts and **16** (20-20-22-22) rows rib in all.

Work in stockinette st until Right Front measures same as

Back to beg of armholes, ending with a purl row.

Work 1 row.

**SHAPE ARMHOLE -**

**Next row** (wrong side) - Bind off **3** (3-3-4-4) sts, purl to end ... **32** (34-36-39-41) sts.

**Next row** - Knit to last 5 sts, sl 1, K1, pssso, K3 ... **31** (33-35-38-40) sts.

Dec one st (as before) at armhole edge in every other row until **29** (31-32-35-36) sts rem.

Work **19** (23-23-27-27) rows.

**SHAPE NECK -**

**Next row** - Bind off 8 sts, knit to end ... **21** (23-24-27-28) sts.

Work 1 row.

Dec one st at neck edge in next 3 rows, then in every other row **3** (2-2-3-3) times, then in every 4th row **1** (1-1-1-2) times ... **14** (17-18-20-20) sts.

Work **2** (4-6-4-2) rows.

**SHAPE SHOULDER -**

Complete as for Left Front Shoulder

**SLEEVES**

Using larger needles, cast on **42** (46-46-46-50) sts.

Work **16** (20-20-22-22) rows rib as for lower band of Back,

**inc** (dec-**inc**-inc-**dec**) one st in center of last row ... **43** (45-47-47-49) sts.

Work 4 rows stockinette st.

**5th row** - K2, **M1**, knit to last 2 sts, **M1**, K2 ... **45** (47-49-49-51) sts.

Inc one st (as before) at each end of every **10th** (14th-16th-14th-16th) row until there are **53** (55-57-59-61) sts.

Cont without further shaping until Sleeve measures **10** (12-13-15-16)" or **25** (30-33-38-40) cm from beg, ending with a purl row.

**SHAPE TOP -**

Bind off 2 sts at beg of next 2 rows ... **49** (51-53-55-57) sts.

**Next row** - K3, K2tog, knit to last 5 sts, sl 1, K1, pssso, K3 ... **47** (49-51-53-55) sts.

Dec one st (as before) at each end of every other row

**11** (12-13-14-15) times, then in every row **1** (1-0-0-0) times ... **23** (23-25-25-25) sts.

Work **0** (0-1-1) rows.  
 Bind off 3 sts at beg of next 4 rows.  
 Bind off rem **11** (11-13-13-13) sts.

## LEFT SIDE OF HOOD

---

Using larger needles, cast on 2 sts.  
 Work 2 rows stockinette st.  
**3rd row** - K1, **M1**, knit to end ... 3 sts.  
 Work 1 row.  
 Rep last 2 rows 7 times ... 10 sts.  
 Cast on **10** (10-12-12-13) sts at beg of next row ... **20** (20-22-22-23) sts.  
 Work 1 row.  
 Cast on **10** (10-12-12-13) sts at beg of next row ... **30** (30-34-34-36) sts.  
 Tie a colored thread at beg of last row to mark beg of back seam.  
 Work 5 rows.  
 Inc one st (as before) at beg of next row, then in every 6th row **5** (2-5-2-3) times, then in every 4th row **2** (7-3-8-7) times ... **38** (40-43-45-47) sts.  
 Cont without further shaping until Hood measures **10** (10½-11-11½-12) " or **26** (27-28-29-30) cm from beg, ending with a purl row.

### SHAPE CROWN -

**Next row** - K2tog, knit to end ... **37** (39-42-44-46) sts.  
 Work 1 row.  
 Dec one st (as before) at beg of next row, then at same edge in every other row 3 times, then in next **3** (5-5-7-7) rows ... **30** (30-33-33-35) sts.  
 Bind off **4** (4-5-5-5) sts at beg of next row.  
 Work 1 row.  
 Rep last 2 rows once ... **22** (22-23-23-25) sts.  
 Bind off rem sts.

## RIGHT SIDE OF HOOD

---

Using larger needles, cast on 2 sts.  
 Work 2 rows stockinette st.  
**3rd row** - Knit to last st, **M1**, K1 ... 3 sts.  
 Work 1 row.  
 Rep last 2 rows 7 times ... 10 sts.  
 Work 1 row.  
 Cast on **10** (10-12-12-13) sts at beg of next row ... **20** (20-22-22-23) sts.  
 Rep last 2 rows once ... **30** (30-34-34-36) sts.  
 Tie a colored thread at beg of last row to mark beg of back seam.  
 Work 4 rows.  
 Inc one st (as before) at end of next row, then in every 6th row **5** (2-5-2-3) times, then in every 4th row **2** (7-3-8-7) times ... **38** (40-43-45-47) sts.  
 Cont without further shaping until Hood measures **10** (10½-11-11½-12) " or **26** (27-28-29-30) cm from beg, ending with a purl row.

### SHAPE CROWN -

**Next row** - Knit to last 2 sts, K2tog ... **37** (39-42-44-46) sts.  
 Work 1 row.

Dec one st (as before) at end of next row, then at same edge in every other row 3 times, then in next **3** (5-5-7-7) rows ... **30** (30-33-33-35) sts.  
 Work 1 row.  
 Bind off **4** (4-5-5-5) sts at beg of next row.  
 Rep last 2 rows once ... **22** (22-23-23-25) sts.  
 Bind off rem sts.

## HOOD BAND

---

**NOTE** - We recommend using mattress stitch to sew up your hoodie.

Beg at colored threads, join hood back and crown seam. With right side facing and using smaller needles, knit up **144** (148-152-156-160) sts evenly along straight edge of hood.

**1st row** - P3, \* K2, P2, rep from \* to last st, P1.

**2nd row** - K3, \* P2, K2, rep from \* to last st, K1.

Last 2 rows form rib.

Work a further 7 rows rib ... 9 rows rib in all.

Bind off loosely in rib.

## LEFT POCKET (beg at lower edge)

---

Using larger needles, cast on **23** (23-25-25-27) sts.  
 Working in stockinette st, inc one st at **beg** of first row, then at same edge in next 2 rows, then in every other row 3 times ... **29** (29-31-31-33) sts.  
 Work 3 rows.

### SHAPE OPENING EDGE -

Bind off 3 sts at beg of next row.  
 Work 1 row.  
 Rep last 2 rows once ... **23** (23-25-25-27) sts.  
 Dec one st at beg of next row, then at same edge in every row until **18** (18-20-20-22) sts rem, then in every other row 3 times ... **15** (15-17-17-19) sts.  
 Work **9** (9-13-13-15) rows.  
 Bind off.

## RIGHT POCKET (beg at lower edge)

---

Using larger needles, cast on **23** (23-25-25-27) sts.  
 Working in stockinette st, inc one st at **end** of first row, then at same edge in next 2 rows, then in every other row 3 times ... **29** (29-31-31-33) sts.  
 Work 4 rows.

### SHAPE OPENING EDGE -

Bind off 3 sts at beg of next row.  
 Work 1 row.  
 Bind off 3 sts at beg of next row ... **23** (23-25-25-27) sts.  
 Dec one st at end of next row, then at same edge in every row until **18** (18-20-20-22) sts rem, then in every other row 3 times ... **15** (15-17-17-19) sts.  
 Work **9** (9-13-13-15) rows.  
 Bind off.

## POCKET BANDS

---

With right side facing and using smaller needles, knit up **28** (28-32-32-36) sts evenly along shaped opening edge of pocket.

Work 9 rows rib as for Hood Band.

Bind off loosely in rib.

**LEFT FRONT BAND**

With right side facing and using smaller needles, knit up

**88** (96-108-116-124) sts evenly along left front edge.

Work 5 rows rib as for Hood Band.

**6th row** - Rib **5** (5-5-4-6), yrn, work 2tog, \* rib **17** (19-17-19-20), yrn, work 2tog, rep from \* **3** (3-4-4-4) times, rib to end ... **5** (5-6-6-6) buttonholes.

Work a further 5 rows rib ... 11 rows rib in all.

Bind off loosely in rib.

**RIGHT FRONT BAND**

With right side facing and using smaller needles, knit up

**88** (96-108-116-124) sts evenly along right front edge.

Work 11 rows rib as for Hood Band.

Bind off loosely in rib.

**TO MAKE UP**

DO NOT PRESS. Join side and sleeve seams. Sew in sleeves.

Placing seam to center back neck, sew hood in position around neck edge, beginning and ending either side of front bands as pictured, and easing in any fullness across back neck. Sew pockets in position onto fronts, placing immediately above lower band and either side of front bands. Sew on buttons.

**AUSTRALIAN  
SUPERFINE  
MERINO**

*by* Cleckheaton

GROWN IN AUSTRALIA AND MADE BY:

*Wangaratta Woollen Mills*



Machine washable, available in a range of beautiful colors. For more information go to [redheart.com/cleckheaton](http://redheart.com/cleckheaton)



We have made every effort to ensure that these instructions are accurate and complete. We cannot be responsible for variations in individual work, human error or if yarn other than the recommended Cleckheaton yarn is used. This pattern is protected by copyright. Australian Superfine Merino by Cleckheaton 8 ply is a trade mark of Australian Country Spinners Pty Ltd. Yarn colors shown may vary slightly due to the printing process.