

kid's graphic pullover



WHAT YOU'LL NEED

MEASUREMENTS	years	2	4	6	8	10
To Fit Chest	ins	22	24	26	28	30
	cm	55	60	65	70	75
Actual Size	ins	25	27	30	31	34
	cm	63	68	75	80	87
Length	ins	15	17	18	20	21
	cm	38	42	46	50	54
Sleeve Length	ins	9	11	13	15	16
	cm	23	28	33	38	40

MATERIALS

AUSTRALIAN SUPERFINE MERINO BY CLECKHEATON 
8 PLY 2.3oz (65g) balls

Colorway 1

Main Color (M - 62 Cameo)	2	3	4	5	6
1st Contrast (C1 - 5 Stone)	1	2	2	2	2
2nd Contrast (C2 - 56 Deco Green)	1	1	1	1	1
3rd Contrast (C3 - 2 Dark Grey)	1	1	1	1	1

Colorway 2

Main Color (M - 44 Mid Navy)	2	3	4	5	6
1st Contrast (C1 - 50 True Blue)	1	2	2	2	2
2nd Contrast (C2 - 29 Burnt Orange)	1	1	1	1	1
3rd Contrast (C3 - 37 Maroon)	1	1	1	1	1

Use only the yarn specified. Other yarns are likely to produce different results.

Quantities are approximate as they can vary between knitters.
Check yarn of the same color is from the same dye lot.

NEEDLES AND EXTRAS

- 1 pair each size 6 (4mm) and size 7 (4.5mm) knitting needles and a **set** of size 3 (3.25mm) **double-pointed** knitting needles or size needed to give correct gauge.
- 4 stitch-holders.
- yarn needle for sewing seams.

GAUGE

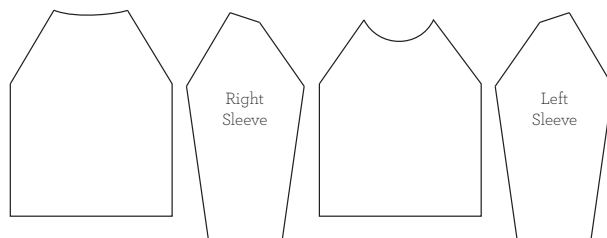
22 sts and 30 rows to 4" (10cm) over stockinette st using size 6 needles.

To check your gauge, cast on 33 sts.

Work 44 rows stockinette st. Bind off loosely.

Check your gauge carefully.

If less sts to 4" (10cm) use smaller needles, if more sts use larger needles.



AUSTRALIAN
SUPERFINE
MERINO

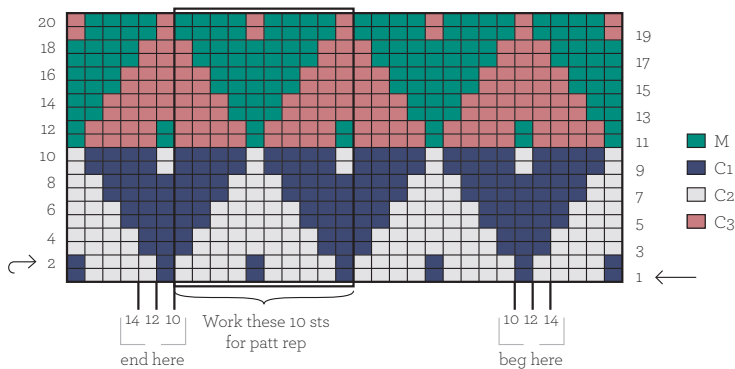
by *Cleckheaton*

GROWN IN AUSTRALIA AND MADE BY:

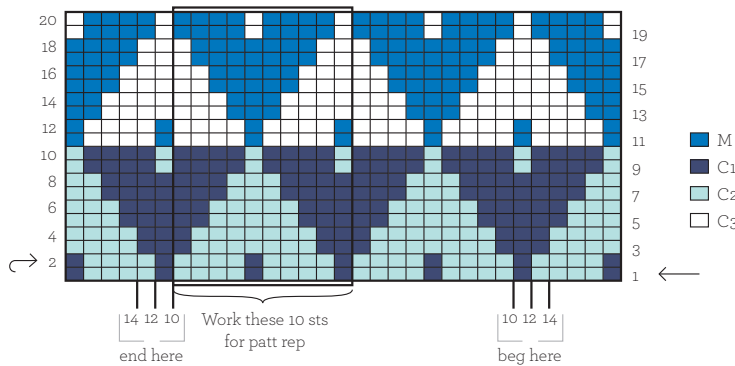
Wangaratta Woollen Mills



COLORWAY 1



COLORWAY 2



NOTE 1 When working from Chart, read odd-numbered rows (knit rows) from right to left and even-numbered rows (purl rows) from left to right.

NOTE 2 For each row – beg at appropriate edge for size being knitted and work to beg of rep, work rep until the number of sts after rep for selected size rem on left-hand needle, then work these sts as indicated on Chart.

NOTE 3 Do not weave colors in Fair Isle patt but carry color not in use loosely across on wrong side. Always carry colors to ends of rows and catch in at side edges. It is important that no color is carried across more than 4 sts and where this is necessary it should be woven under and over color in use at center st. Always carry M above C3 and C1 above C2.

BACK

Using size 6 needles and **C1**, cast on **74 (78-86-90-98)** sts.

1st row – K2, * P2, K2, rep from * to end.

2nd row – P2, * K2, P2, rep from * to end.

Rep 1st and 2nd rows 4 times, then 1st row once ... 11 rows rib in all.

Change to **M** for rem.

Purl 1 row, dec **2 (2-2-0-0)** sts evenly across this row ... **72 (76-84-90-98)** sts.

Work in stockinette st (beg with a knit row) until Back measures **9 (10-11-12-13)"** or **23 (26-29-31-34)** cm from beg, ending with a purl row.

SHAPE RAGLAN ARMHOLES –

Bind off **1 (1-2-2-3)** sts at beg of next 2 rows ... **70 (74-80-86-92)** sts.

1st row – K3, sl 1, K1, pssso, knit to last 5 sts, K2tog, K3.

2nd row – P3, P2tog, purl to last 5 sts, P2tog tbl, P3.

3rd row – As 1st row.

4th row – Purl.

Rep last 4 rows **0 (0-1-0-2)** times ... **64 (68-68-80-74)** sts. ******

Dec one st (inside 3 sts as before) at each end of next row, then in every other row until **30 (32-32-34-34)** sts rem.

Work 1 row.

SHAPE BACK NECK –

Next row – K3, sl 1, K1, pssso, K3, **turn**.

Cont on these 7 sts for right side of neck.

Next row – P2tog, P5.

Next row – K3, sl 1, K2tog, pssso.

Dec one st at neck edge in next 2 rows ... 2 sts.

Next row – P2tog. Fasten off.

Slip next **14 (16-16-18)** sts onto a stitch-holder and leave for neckband. With right side facing, join **M** to rem 8 sts for right side of neck and proceed as folls –

Next row – K3, K2tog, K3.

Next row – P5, P2tog.

Next row – K3tog, K3.

Dec one st at neck edge in next 2 rows ... 2 sts.

Next row – P2tog. Fasten off.

FRONT

Work as for Back to ******.

Dec one st (inside 3 sts as before) at each end of next row, then in every other row until **40 (44-44-46-48)** sts rem.

Work 1 row.

SHAPE NECK –

Next row – K3, sl 1, K1, pssso, **K11 (13-13-13-15)**, **turn**.

Cont on these **15 (17-17-17-19)** sts for left side of neck.

Dec one st at neck edge in next 4 rows, then in every other row **2 (3-3-3-4)** times, **AT SAME TIME** dec one st at armhole edge (inside 3 sts as before) in every other row **4 (5-5-5-6)** times ... 5 sts.

Work 1 row.

Next row – K3, sl 1, K1, pssso.

Dec one st at neck edge in every other row twice ... 2 sts.

Next row – P2tog. Fasten off.

Slip next **8 (8-8-10-8)** sts onto a stitch-holder and leave for neckband.

With right side facing, join **M** to rem **16 (18-18-18-20)** sts for right side of neck and proceed as folls –

Next row – Knit to last 5 sts, K2tog, K3.

Dec one st at neck edge in next 4 rows, then in every other row **2 (3-3-3-4)** times, **AT SAME TIME** dec one st at armhole edge (inside 3 sts as before) in every other row **4 (5-5-5-6)** times ... 5 sts.

Work 1 row.

Next row – K2tog, K3.

Dec one st at neck edge in every other row twice ... 2 sts.

Next row – P2tog. Fasten off.

SLEEVES

Using size 6 needles and **C1**, cast on **42** (46-46-46-50) sts.
Work 11 rows rib as for Back.
Purl 1 row, dec **1** (3-3-1-3) sts evenly across ... **41** (43-43-45-47) sts.
Change to size 7 needles.

BEG FAIR ISLE PATT -

NOTE - Do not weave colors in Fair Isle patt but carry color not in use loosely across on wrong side. Always carry colors to ends of rows and catch in at side edges. It is important that no color is carried across more than 4 sts and where this is necessary it should be woven under and over color in use at center st. Always carry M and C1 above C2 and C3.

Work rows 1 to 4 incl from Chart.

Keeping patt correct, noting that rows 1 to 20 incl form patt, and working extra sts into patt, inc one st at each end of next row, then in every foll **6th** (8th-8th-10th-10th) row until there are **55** (57-59-61-63) sts.

Cont without further shaping until Sleeve measures **9** (11-13-15-16)" or **23** (28-33-38-40) cm from beg, ending with a purl row.

SHAPE RAGLAN -

Keeping patt correct, bind off **1** (1-2-2-3) sts at beg of next 2 rows ... **53** (55-55-57-57) sts.

Sizes 2 and 4 years only -

Dec one st at each end of next 3 rows ... **47** (49) sts.

Work 1 row.

Rep last 4 rows **1** (0) times ... **41** (49) sts.

All sizes ... **41** (49-55-57-57) sts.

Dec one st at each end of next row, then in every foll 4th row **0** (0-1-3-4) times, then in every other row until **13** (15-15-17-17) sts rem.

Work 1 row. Leave rem sts on a stitch-holder.

NECKBAND

NOTE - We recommend using mattress stitch to sew up your pullover.

Join raglan seams, noting that tops of sleeves form part of neckline. With right side facing, using **set** of size 3 **double-pointed** needles and **C1**, beg at left back raglan seam, knit across sts from left sleeve stitch-holder as folls - K2tog, knit to last 2 sts, K2tog, knit up **17** (18-18-18-19) sts evenly along left side of front neck, knit across sts from front stitch-holder, knit up **17** (18-18-18-19) sts evenly along right side of front neck, knit across sts from right sleeve stitch-holder as folls - K2tog, knit to last 2 sts, K2tog, knit up 4 sts evenly along right side of back neck, knit across sts from back stitch-holder as folls - K2tog, knit to last 2 sts, K2tog, then knit up 4 sts evenly along left side of back neck ... **84** (92-92-100-100) sts.

1st round - * K2, P2, rep from * to end.

Rep 1st round 9 times ... 10 rounds in all.

Bind off loosely in rib.

FINISHING

With a slightly damp cloth and warm iron, press Fair Isle sections very lightly on wrong side. Join side and sleeve seams.

AUSTRALIAN SUPERFINE MERINO

by *Cleckheaton*

GROWN IN AUSTRALIA AND MADE BY:

Wangaratta Woollen Mills



Machine washable, available in a range of beautiful colors. For more information go to redheart.com/cleckheaton



We have made every effort to ensure that these instructions are accurate and complete. We cannot be responsible for variations in individual work, human error or if yarn other than the recommended Cleckheaton yarn is used. This pattern is protected by copyright. Australian Superfine Merino by Cleckheaton 8 ply is a trade mark of Australian Country Spinners Pty Ltd. Yarn colors shown may vary slightly due to the printing process.