



KNIT  
SKILL LEVEL  
EASY

Designed by Trish Warrick

## What you will need:

**RED HEART® Super Saver®**: 1 skein 505 Aruba Sea A.

**RED HEART® Boutique Sashay Mini™**: 1 ball 2936 Bubbles B.

**Susan Bates® Knitting Needles**: 5mm [US 8] 16" (40cm) circular needle

One 6x9 mm pony bead (optional – not recommended for children under 3 years), yarn needle

**GAUGE**: 17 sts = 4" (10 cm); 22 rounds = 4" (10 cm) in Stockinette st (knit every round) with **A**. **CHECK YOUR GAUGE**. Use any size needles to obtain the gauge.



**RED HEART® Super Saver®**, Art.E300 available in solid color 7 oz (198 g), 364 yd (333 m); multicolor, heather and print 5 oz (141 g), 244 yd (223 m), flecks 5 oz (141g), 260 yds (238 m) skeins.



**RED HEART® Boutique Sashay Mini™**, Art. E782N, available in 3.5 oz (100 g), 42 yd (39 m) balls



# Snow Princess Trick or Treat Bag

*This knit bag with ruffled trims is perfect for a princess! She will love carrying it for trick-or-treating or as a tote bag any time of the year.*

**Coordinates with:**

*Snow Princess designs, LW4449 and LW4443*

**Bag measures about 23" (58.5 cm) circumference (at widest) and 11" (28 cm) tall (not including handles)**

## Notes

1. Bag is made in 5 pieces: Body, base, two handles, and rosette.
2. Body is worked in rounds beginning at the lower edge. Body is worked in three sections: Ruffle section, diamond section, and crown edging. **A** ruffle is formed with **B** every 5th row of lower section of Body. Diamond section can be worked by following the written instructions or reading the Diamond chart. Read all rows of chart from right to left.
3. Base is worked in Garter stitch (knit every row), back and forth in rows. I-cords are knit for handles. Base is sewn to cast-on edge of body and handles are sewn to top edge.
4. Rosette is formed by gathering the top edge of a length of **B** to form center of flower, and spreading the other edge to form a rosette shape.
5. The top edge of **B** is the non-metallic edge.

## BODY

With **A**, cast on 88 sts. Place marker for beginning of round. Taking care not to twist st, prepare to work in rounds.

With **A**, knit 6 rounds.

## Ruffle Section

Place ball of **B** to your left and hold **B** at front of work.

**Round 1 (ruffle row)**: \*Insert needle through next hole along top edge of **B**, then knit the next st on needle drawing the new stitch through the hole of **B**, skip next hole along top edge of **B**; repeat from \* to end of round.

Do not cut **B**. Carry **B** up side of piece when next needed.

**Rounds 2–5**: With **A** only, knit.

**Rounds 6–31**: Repeat Rounds 1–5 five more times, for a total of 6 ruffles.

Cut **B**. Do not cut **A**.

## Diamond Section

Work with **A** only.

**Round 1**: \*K1, p1; repeat from \* around.

**Round 2**: \*P1, k1; repeat from \* around.

**Rounds 3 and 4**: Knit.

**Round 5**: K4, p1, \*k7, p1; repeat from \* to last 3 sts, k3.

**Round 6**: K3, p1, k1, p1, \*k5, p1, k1, p1; repeat from \* to last 2 sts, k2.

**Round 7**: K2, p1, \*k3, p1; repeat from \* to last st, k1.

**Round 8**: K1, p1, k5, \*p1, k1, p1, k5; repeat from \* to last st, p1.

**Round 9**: \*P1, k7; repeat from \* around.

**Round 10**: Repeat Round 8.

**Round 11**: Repeat Round 7.

**Round 12**: Repeat Round 6.

**Round 13**: Repeat Round 5.

**Rounds 14 and 15**: Repeat Rounds 3 and 4

**Rounds 16 and 17**: Repeat Rounds 1 and 2.

## Crown Edging

**Rounds 1–5**: Knit.

**Round 6 (eyelet round)**: \*K2tog, yo; repeat from \* around.

**Rounds 7–12**: Knit.

Bind off.

## BASE

With **A**, cast on 6 sts. Work back and forth in rows as if working with straight needles.

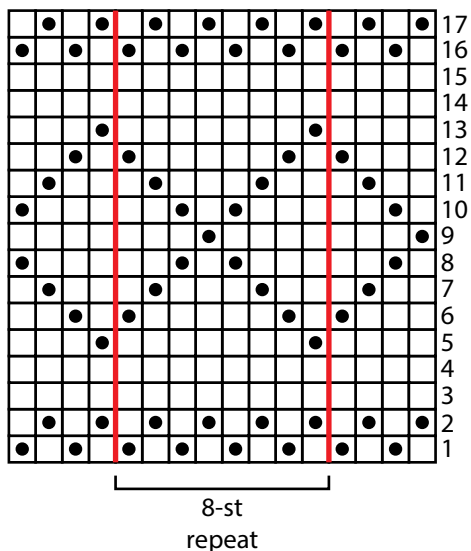
Work in Garter st (knit every row) until piece measures about 10" (25.5 cm) from beginning.

Bind off.

Continued...

SHOP KIT

### Diamond Pattern



Key  
 knit  
 purl

### I-CORD HANDLES (make 2)

With **A**, cast on 4 sts, \*knit all the sts, do not turn work. Slide all the stitches to opposite end of needle so right side is still facing. Carry yarn tightly across back of work, and knit all the stitches; repeat from \* until piece measures about 10" (25.5 cm) from beginning. Bind off.

### FINISHING

Fold crown edging, along eyelet round, to inside of body and sew bound-off edge to inside of bag. Sew edges of base to cast-on edge of body. Sew ends of handles to inside of bag about 2" (5 cm) from sides and with ends in line with bound-off edge of crown edging. Weave in ends.

### Rosette

Cut a 36" (91.5 cm) length of **B**. Thread a 10" (25.5 cm) length of **A** through the holes at the top edge of the length of **B** and pull tight to gather. Open up **B** into a rosette shape. Thread a bead onto the ends of **A** for center of rosette, and sew to front of bag keeping bead at center.

### ABBREVIATIONS

**A** and **B** = Yarn A and Yarn B; **k** = knit; **k2tog** = knit next 2 stitches together; **p** = purl; **st(s)** = stitch(es); **yo** = yarn over; \* = repeat whatever follows the \* as indicated.

