



KNIT
SKILL LEVEL
INTERMEDIATE

Designed by Heather Lodinsky



What you will need:

RED HEART® Soft Baby Steps®:
2 (2, 2, 3) balls 9505 Aqua

Knitting Needles: 5mm [8 US]
circular needle, 24" (60 cm) long

Yarn needle, stitch marker, 3 stitch
holders (2 medium-length and one
large), 7 (8, 8, 9) buttons

GAUGE: 17 sts = 4" (10 cm); 24
rows = 4" (10 cm) in Seed st.
CHECK YOUR GAUGE. Use any
size needles to obtain the gauge.



**RED HEART® Soft
Baby Steps®**, Art. E746
available in solid color

5 oz (141 g), 256 yd (234 m);
prints 4 oz (113 g), 204 yd
(187 m) balls

Star Bright Baby Cardigan and Hat

*Baby will deserve to be the center of
everyone's attention in this darling sweater
set. The Star Lace pattern that encircles
baby's face and the hat can be knit following
the pattern or the chart.*

Cardigan directions are for size 3 months.
Changes for sizes 6 months, 12 months, and
18 months are in parentheses

Hat directions are for size 3–6 months.
Changes for size 12–18 months are in
parentheses

Finished Chest: 20½ (22½, 24½, 26½)" (52
(57, 62, 67.5) cm), buttoned

Finished Hat Circumference: 15 (18)" (38
(45.5) cm), slightly stretched

Special Stitches

sk2p = Slip next stitch as if to knit to right
needle, k2tog, lift slipped st over the k2tog st
and off needle.

ssk = Slip next two stitches, one at a time,
as if to knit to right needle, insert point of
left needle through front of sts, knit these sts
together through back loop.

Pattern Stitches

Seed Stitch (over an even number of sts)

Row 1 (right side): *K1, p1; repeat from * to
end of row.

Row 2: *P1, k1; repeat from * to end of row.
Repeat these 2 rows for Seed st.

**Star Lace Pattern (begins over 4 sts and
increases to 12 sts)**

Row 1 (right side): P1, k1, yo, k1, yo, k1.

Row 2: P5, k1.

Row 3: P1, k5.

Row 4: P5, k1.

Row 5: P1, k2, yo, k1, yo, k2.

Row 6: P7, k1.

Row 7: P1, k7.

Row 8: P7, k1.

Row 9: P1, k3, yo, k1, yo, k3.

Row 10: P9, k1.

Row 11: P1, k9.

Row 12: P9, k1.

Row 13: P1, k4, yo, k1, yo, k4.

Row 14: P11, k1.

Row 15: P1, k11.

Row 16: P11, k1.

Row 17: K1, yo, ssk, k7, k2tog, yo.

Row 18: P11, k1.

Row 19: K1, p1, yo, ssk, k5, k2tog, yo, p1.

Row 20: P1, k1, p7, k1, p1, k1.

Row 21: K1, p1, k1, yo, ssk, k3, k2tog, yo, k1,
p1.

Row 22: P1, k1, p7, k1, p1, k1.

Row 23: [K1, p1] twice, yo, ssk, k1, k2tog, yo,
p1, k1, p1.

Row 24: [P1, k1] twice, p3, [k1, p1] twice, k1.

Row 25: [K1, p1] twice, k1, yo, sk2p, yo, [k1,
p1] twice.

Row 26: *P1, k1; repeat from * to end of row.

Notes

1. Cardigan is worked in one piece from neck
down to underarms. Piece is then divided
for fronts, back, and sleeves.
2. Body is worked from underarm down to
lower edge. Sleeves are worked from
underarm down to cuff, then seamed.
3. Markers are used to separate front band
stitches from Star Lace pattern. If desired,
markers can be placed between repeats
of the Star Lace pattern. Count stitches to
ensure that there are the same number of
stitches between markers.
4. Hat is worked from top of hat down to
lower edge.
5. Star Lace pattern can be worked by reading
chart or following written instructions.
Read right side rows of chart from right
to left, and wrong side rows from left to
right. Repeat the pattern as many times as
needed across each row.

Continued...

SHOP KIT

CARDIGAN

Cast on 55 (59, 63, 67) sts. Work back and forth in rows as if working with straight needles.

Rows 1 and 2: Knit.

Row 3 (buttonhole row – wrong side): K1, k2tog, yo (buttonhole made), knit to end of row.

Rows 4 and 5: Knit.

Row 6: K3, *p1, k3; repeat from * to end of row.

Row 7: K4 (for front band), *p3, k1; repeat from * to last 3 sts, k3 (for front band).

Begin Star Lace Pattern

Row 1 (right side): K3, place marker, work Row 1 of chart over next 48 (52, 56, 60) sts, place marker, p1, k3.

Row 2: Knit to marker, slip marker, work next row of chart to next maker, slip marker, knit to end of row.

Row 3: Knit to marker, slip marker, work next row of chart to next marker, slip marker, p1, k3.

Rows 4–7: Repeat last 2 rows 2 times.

Row 8 (buttonhole row – wrong side): K1, k2tog, yo, k1, slip marker, work next row of Star Lace pattern to next marker, slip marker, knit to end of row.

Row 9: Repeat Row 3.

Rows 10–19: Repeat Rows 2 and 3 five times.

Row 20 (buttonhole row): Repeat Row 8.

Rows 21–26: Repeat Rows 9 and 10 three times—151 (163, 175, 187) sts. Star Lace pattern should now be complete.

Beginning with a right side row, work in Seed st, maintaining front bands, until yoke measures 5½ (6, 6½, 7)" (14 (15, 16.5, 18) cm), and AT THE SAME TIME continue to work a buttonhole at the beginning of every 12th row as established, end with a wrong side row.

Divide for Fronts, Back, and Sleeves

Dividing Row (right side): K3, p1, work in Seed st over next 20 (22, 24, 26) sts, slip these 24 (26, 28, 30) sts to a holder (for left front); work in Seed st over next 30 (32, 34, 36) sts (for left sleeve); slip remaining 97 (105, 113, 121) sts to large holder (for back, right sleeve, and right front).

LEFT SLEEVE

Work over 30 (32, 34, 36) left sleeve sts only. Work in Seed st as established for 7 rows.

Decrease Row (right side): K1, k2tog, work in Seed st as established to last 3 sts, ssk, k1—28 (30, 32, 34) sts.

Repeat last 8 rows 2 (2, 3, 3) more times—24 (26, 26, 28) sts remain.

Work even in Seed st as established until sleeve measures 5 (5½, 6, 6½)" (12.5 (14, 15, 16.5) cm), end with a wrong side row.

Knit 5 rows.

On wrong side, Bind off loosely as if to knit.

RIGHT SLEEVE

With right side facing, work in Seed st as established over first 43 (47, 51, 55) sts from large holder, slip these sts to another holder (for back), work in Seed st as established over next 30 (32, 34, 36) sts from large holder (for right sleeve).

Work over 30 (32, 34, 36) right sleeve sts only in same manner as for left sleeve.

BODY

With right side facing, work across next 24 (26, 28, 30) sts on larger holder as follows: work in Seed st as established over next 20 (22, 24, 26) sts, p1, k3 (for right front).

Continued...





Next Row (wrong side): K4, work in Seed st as established over right front sts, continue in Seed st over 43 (47, 51, 55) back sts from holder, continue in Seed st over first 20 (22, 24, 26) left front sts from holder, knit last 4 sts from holder—91 (99, 107, 115) sts. Continue in pattern as established, maintaining front bands, and working a buttonhole at beginning of every 12th row until a total of 7 (8, 8, 9) buttonholes have been made, end with a wrong side row. Knit 5 rows. On wrong side, Bind off loosely as if to knit.

FINISHING CARDIGAN

Sew sleeve seams. Sew buttons opposite buttonholes. Weave in end.

HAT

Cast on 6 (7) sts.

Row 1 (wrong side): Knit.

Row 2: K1, *yo, k1; repeat from * to end of row—11 (13) sts.

Row 3: Knit.

Row 4: Repeat Row 2—21 (25) sts.

Row 5: K1, *p3, k1; repeat from * to end of row. Begin Star Lace Pattern

Row 1: Work Row 1 of Star Lace pattern to last st, p1—31 (37) sts.

Row 2: K1, work next row of Star Lace pattern to end of row.

Row 3: Work next row of Star Lace pattern to last st, p1.

Repeat last 2 rows until all rows of Star Lace pattern have been worked—61 (73) sts.

Beginning with a right side row, work in Seed st for 1 (2)" (2.5 (5) cm), end with a wrong side row.

Knit 5 rows.

On wrong side, bind off loosely as if to knit.

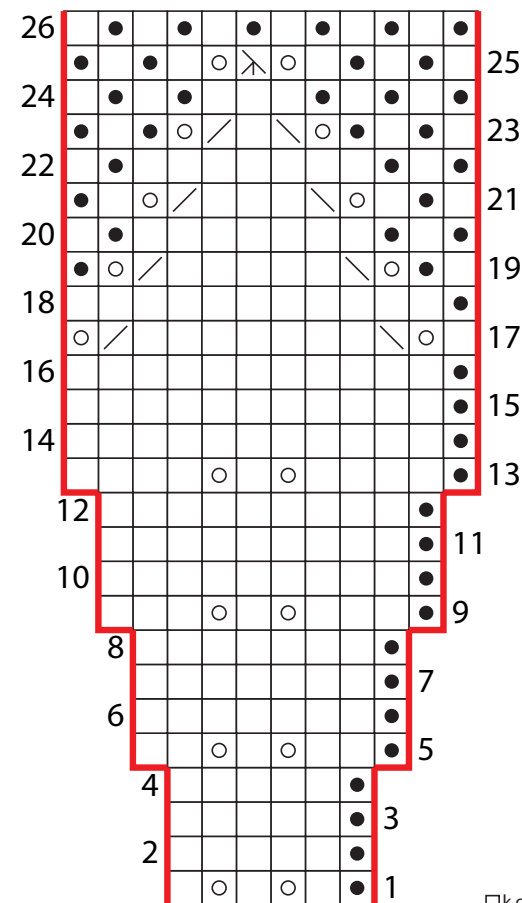
FINISHING HAT

Sew side edges together for back seam, gathering top stitches. Weave in ends.

ABBREVIATIONS

k = knit; k2tog = knit 2 stitches together; p = purl; st(s) = stitch(es); yo = yarn over; * = repeat whatever follows the * as indicated.

Star Lace Pattern



stitch pattern repeat

- k on RS, p on WS
- ◻ p on RS, k on WS
- ⊙ yarn over
- ⊠ k2tog = knit 2 sts together
- ⊞ ssk = slip, slip, knit
- ⊞ sk2p = slip 1, k2tog, pass slipped st over

