



KNIT  
SKILL LEVEL  
**INTERMEDIATE**

Designed by Lisa Gentry



## What you will need:

Red Heart® Soft Baby Steps®:  
4 balls 9800 Baby Blue OR 9700  
Baby Pink.

Susan Bates® Circular Knitting  
Needles: 5mm [US 8] – 36"  
(91.4 cm)

Yarn needle

**GAUGE:** 14 sts = 3" (7.6 cm);  
21 rows = 4" (10 cm) in pattern.  
**CHECK YOUR GAUGE.** Use any  
size needle to obtain the gauge.



RED HEART® Soft  
Baby Steps®, Art. E746  
available in solid color  
5 oz (141 g), 256 yd (234 m); prints  
4 oz (113 g), 204 yd (187 m) balls

# Prince Blanket

*Knit a beautiful blanket in cuddly soft yarn for  
a new precious baby boy or girl. This pattern  
is timeless, elegant and perfect for your dear  
little one.*

Blanket measures 35" x 38" (89 x 96.5 cm)

## SPECIAL ABBREVIATION

**Loop** = [Move st on right needle back to left  
needle, K1] two times.

## BLANKET

Cast on 121 sts.

**Row 1 (Right Side):** K8; [P7, K7] eight times; K1.

**Row 2:** P8; [K7, P7] eight times; P1.

**Row 3:** K4, yo, K2tog, K2; [P3, yo, P2tog, P2,  
K3, yo, K2tog, K2] eight times; K1.

**Row 4:** Repeat Row 2.

**Row 5:** K2, K2tog, yo, K1, yo, K2tog, K1; [P1,  
P2tog, yo, P1, yo, P2tog, P1, K1, K2tog, yo, K1,  
yo, K2tog, K1] eight times; K1.

**Row 6:** Repeat Row 2.

**Row 7:** K3, K2tog, yo, K3; [P2, P2tog, yo, P3,  
K2, K2tog, yo, K3] eight times; K1.

**Row 8:** Repeat Row 2.

Repeat Rows 2- 8 eighteen more times.

**Last Row:** K8; [P7, K7] eight times; K1.

Bind off all sts.

## Shell Edging

**Row 1 (Right Side):** Beginning at bound-off  
edge, \*[pick up and K6 sts across next square]  
19 times; continuing along next side [pick up  
and K6 sts across next square] 16 times; pick  
up and K5 sts across next square; repeat from  
\* one more time – 430 sts; place marker for  
beginning of row.

**Row 2:** Purl.

**Row 3:** K1; \*work 5 sts in next st; turn; P5,  
slip next st, turn; K2tog; [Loop; K1, pass first  
stitch on needle over next st] three times;  
Loop; K2tog, pass first stitch on needle over  
next st; bind off 3 sts; repeat from \* to end.  
Fasten off. Weave in ends.

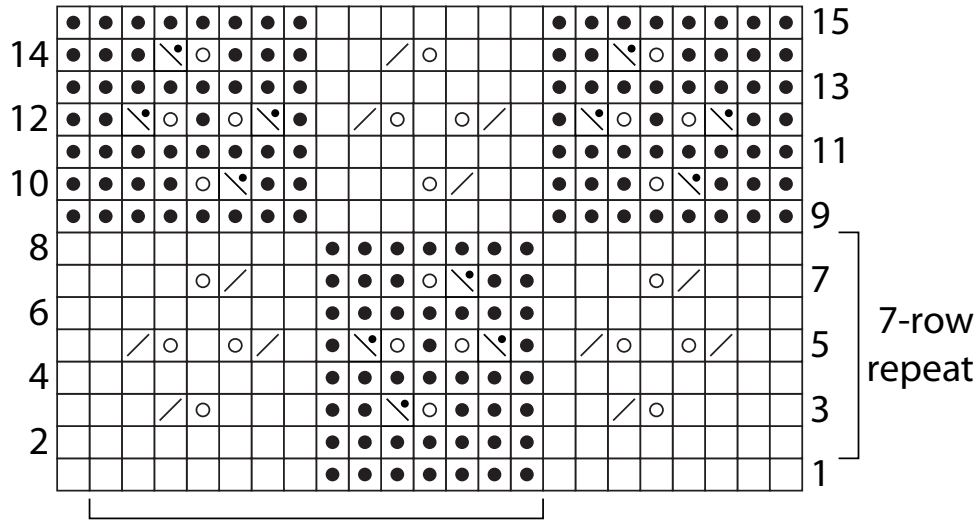
## ABBREVIATIONS

**K** = knit; **K2tog** = knit two together; **mm**  
= millimeters; **P** = purl; **P2tog** = purl two  
together; **st(s)** = stitch(es); **yo** = yarn over; \*  
**or \*\*** = repeat whatever follows the \* or \*\* as  
indicated; [ ] = work directions in brackets the  
number of times specified.

*See chart on next page.*



SHOP KIT



- k on RS, p on WS
- p on RS, k on WS
- yarn over
- k2tog on RS, p2tog on WS
- p2tog on RS, k2tog on WS