



KNIT
SKILL LEVEL
INTERMEDIATE

Designed by Lisa Gentry



What you will need:

Red Heart® Soft Baby Steps®:
4 balls 9800 Baby Blue OR 9700
Baby Pink.

Susan Bates® Circular Knitting
Needles: 5mm [US 8] – 36"
(91.4 cm)

Yarn needle

GAUGE: 14 sts = 3" (7.6 cm);
21 rows = 4" (10 cm) in pattern.
CHECK YOUR GAUGE. Use any
size needle to obtain the gauge.



RED HEART® Soft
Baby Steps®, Art. E746
available in solid color
5 oz (141 g), 256 yd (234 m); prints
4 oz (113 g), 204 yd (187 m) balls

Princess Blanket

Knit a beautiful blanket in cuddly soft yarn for a new precious baby boy or girl. This pattern is timeless, elegant and perfect for your dear little one.

Blanket measures 35" x 31" (89 x 78.5 cm)

SPECIAL ABBREVIATION

Loop = [Move st on right needle back to left needle, K1] two times.

BLANKET

Cast on 121 sts.

Row 1 (Right Side): K8; [P7, K7] eight times; K1.

Row 2: P8; [K7, P7] eight times; P1.

Row 3: K4, yo, K2tog, K2; [P3, yo, P2tog, P2, K3, yo, K2tog, K2] eight times; K1.

Row 4: Repeat Row 2.

Row 5: K2, K2tog, yo, K1, yo, K2tog, K1; [P1, P2tog, yo, P1, yo, P2tog, P1, K1, K2tog, yo, K1, yo, K2tog, K1] eight times; K1.

Row 6: Repeat Row 2.

Row 7: K3, K2tog, yo, K3; [P2, P2tog, yo, P3, K2, K2tog, yo, K3] eight times; K1.

Row 8: Repeat Row 2.

Repeat Rows 2- 8 eighteen more times.

Last Row: K8; [P7, K7] eight times; K1.

Bind off all sts.

Shell Edging

Row 1 (Right Side): Beginning at bound-off edge, *[pick up and K6 sts across next square] 19 times; continuing along next side [pick up and K6 sts across next square] 16 times; pick up and K5 sts across next square; repeat from * one more time – 430 sts; place marker for beginning of row.

Row 2: Purl.

Row 3: K1; *work 5 sts in next st; turn; P5, slip next st, turn; K2tog; [Loop; K1, pass first stitch on needle over next st] three times; Loop; K2tog, pass first stitch on needle over next st; bind off 3 sts; repeat from * to end. Fasten off. Weave in ends.

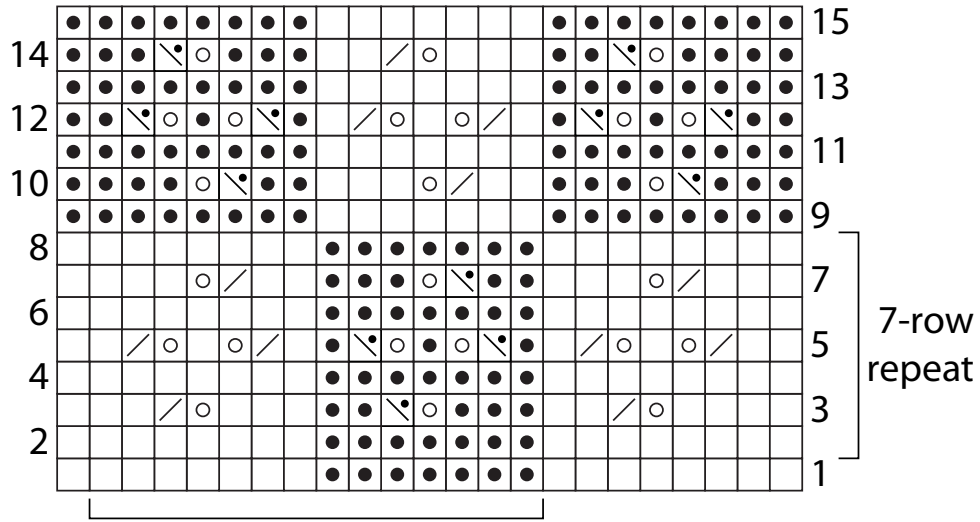
ABBREVIATIONS

K = knit; **K2tog** = knit two together; **mm** = millimeters; **P** = purl; **P2tog** = purl two together; **st(s)** = stitch(es); **yo** = yarn over; * or ** = repeat whatever follows the * or ** as indicated; [] = work directions in brackets the number of times specified.

See chart on next page.



SHOP KIT



14-st
repeat

- k on RS, p on WS
- p on RS, k on WS
- yarn over
- k2tog on RS, p2tog on WS
- p2tog on RS, k2tog on WS