

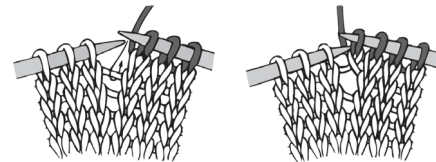


KNIT | SKILL LEVEL: INTERMEDIATE

ABBREVIATIONS

Alt = Alternate
Approx = Approximately
Beg = Beginning
Cont = Continue
K = Knit
K2tog = Knit next 2 stitches together
M1 = Make 1 stitch by picking up horizontal loop lying before next stitch and knitting into back of loop.

P = Purl
PM = Place marker
Rem = Remaining
Rep = Repeat
Rnd(s) = Round(s)
St(s) = Stitch(es)
Tog = Together
WS = Wrong side



MATERIALS

Red Heart® Heat Wave™ (3.5 oz/100 g; 198 yds/181 m)

Hat and Cowl

Main Color (MC) Radio (0420)	2 balls
Contrast A Bikini (0720)	1 ball
Contrast B Ocean (0888)	1 ball
Contrast C Sandy Shores (0110)	1 ball

Sizes U.S. 7 (4.5 mm) and U.S. 8 (5 mm) circular knitting needles 16" [40.5 cm] long. Set of 4 size U.S. 8 (5 mm) double-pointed knitting needles **or size needed to obtain gauge**. Stitch marker.

SIZE/MEASUREMENTS

Hat: One size to fit Adult.

Cowl: Approx 12" [30.5 cm] deep and 30" [76 cm] circumference (worked as a tube).

GAUGE

18 sts and 24 rows = 4" [10 cm] in stocking st with larger needles.

INSTRUCTIONS

Note: When working from chart, carry yarn not in use loosely across WS of work. The colors are never twisted around one another.

COWL

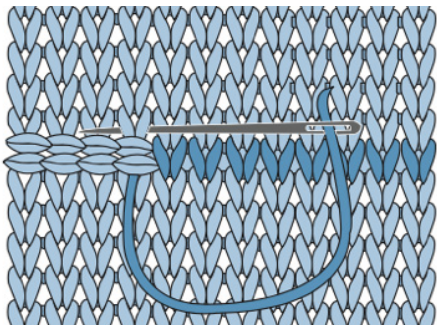
With MC and larger circular knitting needle, cast on 108 sts. Join in rnd, being careful not to twist. PM on first st.

Knit Chart to end of chart, reading rnds from right to left, noting 6-st rep will be worked 18 times. Rows 1 to 36 of Chart I form pat.

Cont working in Chart pat until work from beg measures approx 30" [76 cm], ending on Row 36 of Chart.

With MC, cast off knitwise.

With MC, sew cast on and cast off edges tog using invisible seaming method as shown in diagram, working around entire circumference to form double thickness Cowl.



HAT

With MC and smaller circular knitting needle, cast on 88 sts. Join in rnd, being careful not to twist. PM on first st.

1st rnd: *K2. P2. Rep from * around.

Rep 1st rnd for 2" [5 cm].

Switch to larger circular needle.

Next rnd: (K44. M1) twice. 90 sts.

Knit rnds **1 to 30** of Chart, reading rnds from right to left, noting 6-st rep will be worked 15 times. Break A, B and C.

Shape crown: With MC, proceed as follows:

Note: Change to double-pointed needles when necessary.

1st rnd: *K8. K2tog. Rep from * around. 81 sts.

2nd and alt rnds: Knit.

3rd rnd: *K7. K2tog. Rep from * around. 72 sts.

5th rnd: *K6. K2tog. Rep from * around. 63 sts.

7th rnd: *K5. K2tog. Rep from * around. 54 sts.

9th rnd: *K4. K2tog. Rep from * around. 45 sts.

11th rnd: *K3. K2tog. Rep from * around. 36 sts.

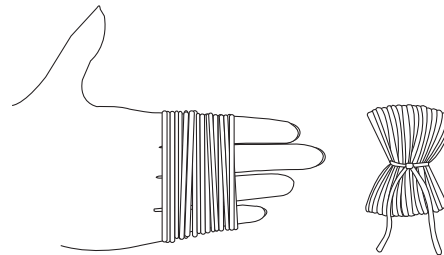
13th rnd: *K2. K2tog. Rep from * around. 27 sts.

15th rnd: *K1. K2tog. Rep from * around. 18 sts.

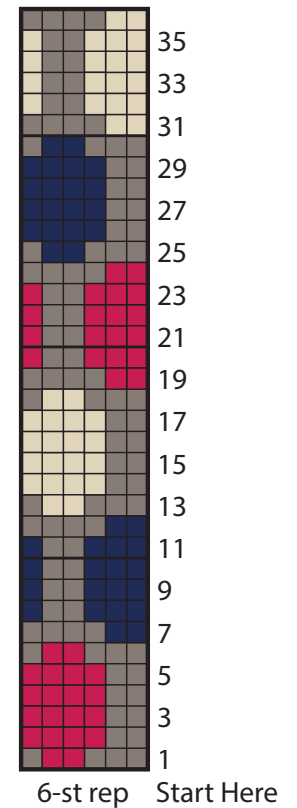
17th rnd: *K2tog. Rep from * around. 9 sts.

Break yarn, leaving a long end. Draw end tightly through rem sts and fasten securely.

Pom-pom: Wind 1 strand each of A, B, and C around 4 fingers approx 40 times. Remove from fingers and tie tightly in center. Cut through each side of loops. Trim to a smooth round shape. Sew to top of Hat.



Chart



Key

- = MC
- = Contrast A
- = Contrast B
- = Contrast C

