



KNIT
SKILL LEVEL
INTERMEDIATE

Designed by Julie Farmer



What you will need:

RED HEART® Soft®: 4 (5, 5, 6, 6, 7) balls 3729 Grape

Susan Bates® Circular Knitting Needles: 4.5mm [US 7] circular knitting needle 20"/50cm long or longer, and 3.75mm [US 5] circular knitting needle 20"/50cm long or longer (for lower borders and I-cord ties)

Stitch markers, stitch holders, cable needle, yarn needle

GAUGE: 18 sts = 4" (10 cm); 24 rows = 4" (10 cm) in Stockinette st with larger needle; one 10-st cable pattern measures about 1¾" at widest with larger needle. **CHECK YOUR GAUGE.** Use any size needle to obtain the gauge.



RED HEART® Soft®, Art. E728 available in solid color 5 oz (141 g), 256 yd (234 m), print 4 oz (113 g), 204 yd (187 m), and heather 4oz (113g), 212 yd (194m) balls

Lace in the Cables Vest

This timeless knit vest is ideal for all figure types. The extended shoulder detail and lacy cable stitching add just the right touch to the perfect vest.

Directions are for size Small. Changes for sizes Medium, Large, 1X, 2X, and 3X are in parentheses.

To Fit Bust 32 (36, 40, 44, 48, 52)" (81.5 (91.5, 101.5, 112, 122, 132) cm)

Finished Bust: 36 (40, 44, 48, 52, 56)" (91.5 (101.5, 112, 122, 132, 142) cm)

Finished Length: 22 (22, 23, 24, 24, 24½)" (56 (56, 58.5, 61, 61, 62) cm)

Special Stitch

5/5 RC (5 over 5 Right Cross) = Slip next 5 sts to cable needle and hold in back, k5, then k5 from cable needle.

ssk (slip, slip, knit) = Slip next two stitches knitwise to right needle, insert point of left needle through front of stitches, knit these stitches together through back loops.

Pattern Stitches

Cable A Pattern (over 10 sts)

Row 1 (right side): 5/5 RC.

Rows 2–10: Work in Stockinette st (knit on right side, purl on wrong side) for 9 rows.

Rows 11–20: Repeat Rows 1–10.

Rows 21: 5/5 RC.

Row 22: Purl.

Row 23: [Yo, k2tog] 5 times

Rows 24–39: Repeat Rows 22 and 23 eight times.

Row 40: Purl.

Repeat Rows 1–40 for Cable A pattern.

Cable B Pattern (over 10 sts)

Note: Row 1 is equivalent to Row 21 of Cable A pattern, Row 2 is equivalent to Row 22 of Cable A pattern, and so on.

Row 1 (right side): 5/5 RC.

Row 2: Purl.

Row 3: [Yo, k2tog] 5 times

Rows 4–19: Repeat Rows 2 and 3 eight times.

Row 20: Purl.

Row 21: 5/5 RC.

Rows 22–30: Work in Stockinette st (knit on right side, purl on wrong side) for 9 rows.

Rows 31–40: Repeat Rows 21–30.

Repeat Rows 1–40 for Cable B pattern.

Special Technique

3-Needle Bind-Off = Hold needles of stitches to be seamed parallel and with Right Sides together. With 3rd needle knit together first stitch from each needle, *knit together next stitch from each needle, pass first stitch over 2nd stitch and off right needle; repeat from * until all stitches have been knit from the 2 parallel needles and only one stitch remains on the right needle. Fasten off.

Notes

1. Work back and forth on circular needles as if working with straight needles.
2. Cable patterns can be worked by reading written instructions or following charts. Read right side rows of charts from right to left and wrong side rows from left to right.

BACK

With smaller needle, cast on 88 (96, 104, 114, 122, 132) sts.

Work in Garter st (knit every row) for 4 rows. Change to larger needle.

Row 1 (right side): P15 (17, 19, 24, 26, 31), place marker, [k10, place marker, p14 (16, 18, 18, 20, 20), place marker] twice, k10, place marker, p15 (17, 19, 24, 26, 31).

Row 2: Knit to first marker, slip marker, [p10, slip marker, knit to next marker, slip marker] twice, p10, slip marker, knit to end of row.

Row 3: Purl to first marker, slip marker, [k10, slip marker, purl to next marker, slip marker] twice, k10, slip marker, purl to end of row.

Row 4: Repeat Row 2.

Continued...

SHOP KIT



Begin Cable Patterns

Continue to slip markers as you come to them.

Row 1 (right side): Purl to first marker, work Row 1 of Cable A pattern, purl to next marker, work Row 1 of Cable B pattern, purl to next marker, work Row 1 of Cable A pattern, purl to end of row.

Row 2: Knit to first marker, work next row of Cable A pattern, knit to next marker, work next row of Cable B pattern, knit to next marker, work next row of Cable A pattern, knit to end of row.

Row 3: Purl to first marker, work next row of Cable A pattern, purl to next marker, work next row of Cable B pattern, purl to next marker, work next row of Cable A pattern, purl to end of row.

Repeat last 2 rows until piece measures about 14 (14, 14½, 15, 15, 15)'' (35.5 (35.5, 37, 38, 38, 38) cm) from beginning, end with a wrong side row.

Cast On for Sleeves

Next Row (right side): Cast on 6 sts, k3 (for sleeve edge), purl to first marker, work next row of Cable A pattern, purl to next marker, work next row of Cable B pattern, purl to next marker, work next row of Cable A pattern, purl to end of row—94 (102, 110, 120, 128, 138) sts.

Next Row: Cast on 6 sts, knit to first marker, work next row of Cable A pattern, knit to next marker, work next row of Cable B pattern, knit to next marker, work next row of Cable A pattern, knit to end of row—100 (108, 116, 126, 134, 144) sts.

Next Row: K3 (for sleeve edge), purl to first marker, work next row of Cable A pattern, purl to next marker, work next row of Cable B pattern, purl to next marker, work next row of Cable A pattern, purl to last 3 sts, k3.

Next Row: Knit to first marker, work next row of Cable A pattern, knit to next marker, work next row of Cable B pattern, knit to next marker, work next row of Cable A pattern, knit to end of row.

Repeat last 2 rows until piece measures about 22 (22, 23, 24, 24, 24½)'' (56 (56, 58.5, 61, 61, 62) cm), end with a wrong side row.

Cut yarn. Slip first and last 38 (42, 45, 49, 52, 56) sts onto holders, leaving center 24 (24, 26, 28, 30, 32) sts on needle for back neck.

Rejoin yarn and work in Garter st over remaining back neck sts for 3 rows. Bind off loosely.

RIGHT FRONT

With smaller needle, cast on 48 (52, 56, 60, 66, 70) sts.

Work in Garter st for 4 rows.

Change to larger needle.

Row 1 (right side): K3 (for front edge), place marker, p20 (22, 24, 23, 27, 26), place marker, k10, place marker, p15 (17, 19, 24, 26, 31).

Row 2: Knit to first marker, slip marker, p10, slip marker, knit to end of row slipping last marker.

Row 3: K3, slip marker, purl to next marker, slip marker, k10, slip marker, purl to end of row.

Row 4: Repeat Row 2.

Begin Cable Pattern

Continue to slip markers as you come to them.

Row 1 (right side): K3, purl to next marker, work Row 1 of Cable A pattern, purl to end of row.

Row 2: Knit to first marker, work next row of Cable A pattern, knit to end of row.

Row 3: K3, purl to next marker, work next row of Cable A pattern, purl to end of row.

Repeat last 2 rows until piece measures about 12 (12, 12½, 13, 13, 13)'' (30.5 (30.5, 32, 33, 33, 33) cm) from beginning, end with a wrong side row.

Shape Neck

Row 1 (right side): K3, ssk, purl to next marker, work next row of Cable A pattern, purl to end of row—47 (51, 55, 59, 65, 69) sts.

Row 2: Knit to first marker, work next row of Cable A pattern, knit to end of row.

Repeat last 2 rows until piece measures about 14 (14, 14½, 15, 15, 15)'' (35.5 (35.5, 37, 38, 38, 38) cm) from beginning, end with a wrong side row.

Cast On for Sleeve

Row 1 (right side): K3, ssk, purl to next marker, work next row of Cable A pattern, purl to end of row.

Row 2: Cast on 6 sts, knit to first marker, work next row of Cable A pattern, knit to end of row.

Row 3: K3, ssk, purl to next marker, work next row of Cable A pattern, purl to last 3 sts, k3 (for sleeve edge).

Row 4: Knit to first marker, work next row of Cable A pattern, knit to end of row.

Repeat last 2 rows until 38 (42, 45, 49, 52, 56) sts remain, end with a wrong side row.

Next Row (right side): K3, purl to next marker, work next row of Cable A pattern, purl to last 3 sts, k3.

Next Row: Knit to first marker, work next row of Cable A pattern, knit to end of row.

Repeat last 2 rows until piece measures same as back.

Slip remaining 38 (42, 45, 49, 52, 56) sts to a holder.

LEFT FRONT

With smaller needle, cast on 48 (52, 56, 60, 66, 70) sts.

Work in Garter st for 4 rows.

Change to larger needle.

Row 1 (right side): P15 (17, 19, 24, 26, 31), place marker, k10, place marker, p20 (22, 24, 23, 27, 26), place marker, k3 (for front edge).

Row 2: Knit to 2nd marker, slip marker, p10,

slip marker, knit to end of row.

Row 3: Purl to first marker, slip marker, k10, slip marker, purl to last marker, slip marker, k3.

Row 4: Repeat Row 2.

Begin Cable Pattern

Continue to slip markers as you come to them.

Row 1 (right side): Purl to first marker, work Row 1 of Cable A pattern, purl to last marker, k3.

Row 2: Knit to 2nd marker, work next row of Cable A pattern, knit to end of row.

Row 3: Purl to first marker, work next row of Cable A pattern, purl to last marker, k3.

Repeat last 2 rows until piece measures about 12 (12, 12½, 13, 13, 13)'' (30.5 (30.5, 32, 33, 33, 33) cm) from beginning, end with a wrong side row.

Shape Neck

Row 1 (right side): Purl to first marker, work next row of Cable A pattern, purl to 2 sts before last marker, k2tog, k3—47 (51, 55, 59, 65, 69) sts.

Row 2: Knit to 2nd marker, work next row of Cable A pattern, knit to end of row.

Repeat last 2 rows until piece measures about 14 (14, 14½, 15, 15, 15)'' (35.5 (35.5, 37, 38, 38, 38) cm) from beginning, end with a wrong side row.

Cast On for Sleeve

Row 1 (right side): Cast on 6 sts, k3 (for sleeve edge), purl to first marker, work next row of Cable A pattern, purl to 2 sts before last marker, k2tog, k3.

Row 2: Knit to 2nd marker, work next row of Cable A pattern, knit to end of row.

Row 3: K3, purl to first marker, work next row of Cable A pattern, purl to 2 sts before last marker, k2tog, k3.

Repeat last 2 rows until 38 (42, 45, 49, 52, 56) sts remain, end with a wrong side row.

Continued...

Next Row (right side): K3, purl to first marker, work next row of Cable A pattern, purl to last marker, k3.

Next Row: Knit to 2nd marker, work next row of Cable A pattern, knit to end of row. Repeat last 2 rows until piece measures same as back.

Slip remaining 38 (42, 45, 49, 52, 56) sts to a holder.

I-CORD TIES (make 2)

With smaller needle, cast on 3 sts, *knit all the sts, do not turn work. Slide all the stitches to opposite end of needle. Carry yarn tightly across back of work, and knit all the stitches; repeat from * until I-cord measures about 20" (51 cm) long. Bind off.

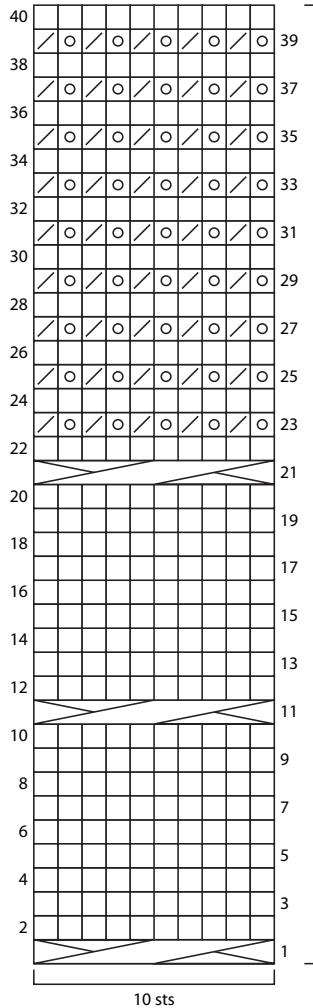
FINISHING

Use 3-needle bind off to seam shoulders. Sew side and sleeve seams. Sew one tie to each front edge near beginning of neck shaping. Weave in any remaining ends.

ABBREVIATIONS

k = knit; **k2tog** = knit next 2 sts together; **p** = purl; **st(s)** = stitch(es); **yo** = yarn over; [] = work directions in brackets the number of times specified; * = repeat whatever follows the * as indicated.

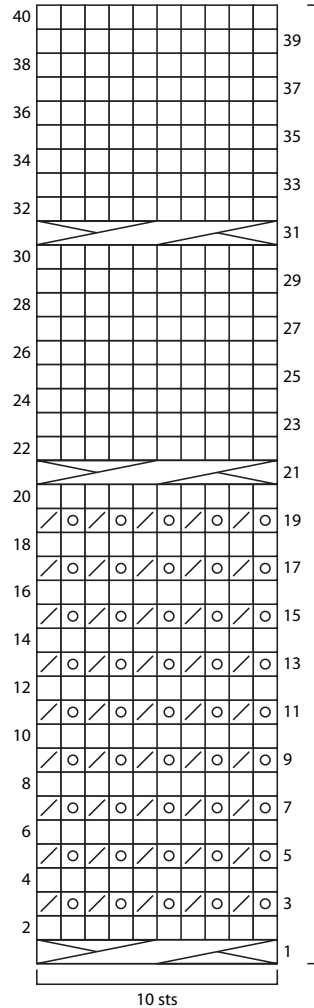
Cable A Pattern



20-row repeat

10 sts

Cable B Pattern



20-row repeat

10 sts

- k on RS, p on WS
- yarn over
- k2tog
- 5/5 RC (5 over 5 Right Cross): Slip next 5 sts to cable needle and hold in back, k5, then k5 from cable needle.

