



KNIT  
SKILL LEVEL  
INTERMEDIATE

Designed by Heather Lodinsky

## What you will need:

**RED HEART® Boutique Midnight®:**  
5 (6, 7, 8, 8) balls 1945 Shadow.

**Susan Bates® Knitting Needles:**  
5mm [US 8] and 6mm [US 10]

Stitch markers, cable needle, yarn  
needle, three 1" (25mm) buttons

**GAUGE:** 22 sts = 4" (10 cm); 22  
rows = 4" (10 cm) in Honeycomb  
Cable pattern with larger needles;  
22 sts = 3" (7.5 cm) in Large Right  
Twist Cable pattern with larger  
needles. **CHECK YOUR GAUGE.**  
Use any size needles to obtain  
the gauge.



# Cable Best Vest

*Shaded chainette yarn combines with casual  
workday or weekend style in this wearable  
vest. Enjoy knitting the easy cables and  
watching the shadings appear as you go!*



**RED HEART® Boutique  
Midnight® Art. E786,**  
Available in 2.5 oz  
(70g), 153 yd (140m)  
balls

**SHOP KIT**

Directions are for size Small. Changes  
for sizes Medium, Large, 1X and 2X are in  
parentheses.

**Finished Bust:** 35 (38½, 44½, 46½, 50)" (89  
(98, 113, 118, 127) cm)

**Finished Length:** 23 (23½, 24, 24½, 25)"  
(58.5 (59.5, 61, 62, 63.5) cm)

## Special Stitches

**8/8 LC (8 over 8 Left Cross)** = Slip next 8  
stitches to cable needle and hold in front, k8,  
then k8 from cable needle.

**8/8 RC (8 over 8 Right Cross)** = Slip next 8  
stitches to cable needle and hold in back, k8,  
then k8 from cable needle.

**kfb (Knit into front and back)** = Knit next st  
but do not remove from needle, knit into back  
loop of same st and remove from needle.

**LT (Left Twist)** = Slip next stitch to cable  
needle and hold in front, k1, then knit stitch  
from cable needle.

**RT (Right Twist)** = Slip next stitch to cable  
needle and hold in back, k1, then knit stitch  
from cable needle.

## Pattern Stitches

Honeycomb Cable Pattern (multiple of 4 sts)

**Row 1 (right side):** \*RT, LT; repeat from \* across.

**Row 2:** Purl.

**Row 3:** \*LT, RT; repeat from \* across.

**Row 4:** Purl.

Repeat Rows 1–4 for Honeycomb Cable pattern.

## Large Right Twist Cable Pattern (worked over 22 sts)

**Row 1 (right side):** P3, k16, p3.

**Row 2:** K3, p16, k3.

**Rows 3–6:** Repeat last 2 rows twice.

**Row 7:** P3, 8/8 RC, p3.

**Row 8:** Repeat Row 2.

**Rows 9–16:** Repeat Rows 1 and 2 four times.

Repeat Rows 1–16 for Large Right Twist Cable  
pattern.

## Large Left Twist Cable Pattern (worked over 22 sts)

**Row 1 (right side):** P3, k16, p3.

**Row 2:** K3, p16, k3.

**Rows 3–6:** Repeat last 2 rows twice.

**Row 7:** P3, 8/8 LC, p3.

**Row 8:** Repeat Row 2.

**Rows 9–16:** Repeat Rows 1 and 2 four times.  
Repeat Rows 1–16 for Large Left Twist Cable  
pattern.

## BACK

With smaller needles, cast on 90 (98, 114,  
122, 130) sts.

Knit 5 rows.

**Next Row (right side):** P3, place marker,  
k12 (12, 16, 16, 20), place marker, p3, [kfb]  
8 times, p3, place marker, k32 (40, 48, 56,  
56), place marker, p3, [kfb] 8 times, p3, place  
marker, k12 (12, 16, 16, 20), place marker,  
p3—106 (114, 130, 138, 146) sts.

Change to larger needles.

**Next Row (wrong side):** K3, slip marker, purl  
to next marker, slip marker, k3, p16, k3, slip  
marker, purl to next marker, slip marker, k3,  
p16, k3, slip marker, purl to last marker, slip  
marker, k3.

## Begin Cable Patterns

**Set-Up Row (right side):** P3, slip marker, work  
Row 1 of Honeycomb Cable pattern to next  
marker, slip marker, work Row 1 of Large  
Right Twist Cable pattern to next marker, slip  
marker, work Row 1 of Honeycomb Cable  
pattern to next marker, slip marker, work  
Row 1 of Large Left Twist Cable pattern to  
next marker, slip marker, work Row 1 of  
Honeycomb Cable pattern to last marker, slip  
marker, p3.

Continued...



**Next Row (wrong side):** K3, slip marker, work next row of Honeycomb Cable pattern to next marker, slip marker, work next row of Large Left Twist Cable pattern to next marker, slip marker, work next row of Honeycomb Cable pattern to next marker, slip marker, work next row of Large Right Twist Cable pattern to next marker, slip marker, work next row of Honeycomb Cable pattern to last marker, slip marker, k3.

**Next Row (right side):** P3, slip marker, work next row of Honeycomb Cable pattern to next marker, slip marker, work next row of Large Right Twist Cable pattern to next marker, slip marker, work next row of Honeycomb Cable pattern to next marker, slip marker, work next row of Large Left Twist Cable pattern to next marker, slip marker, work next row of Honeycomb Cable pattern to last marker, slip marker, p3.

Work in pattern as established, by repeating the last 2 rows, keeping the first and last 3 sts in Reverse Stockinette st (purl on right side, knit on wrong side) and working the next row of each cable pattern between markers, until piece measures 15½" (39.5 cm) from beginning, end with a wrong side row.

### Shape Armholes

**Note:** When instructed to work in pattern "as established", work the next row of each pattern and ensure that the stitches and cables line up as in previous rows.

**Row 1 (right side):** Bind off 7 (7, 11, 11, 15) sts, continue in pattern as established to end of row—99 (107, 119, 127, 131) sts.

**Row 2:** Bind off 7 (7, 11, 11, 15) sts, continue in pattern as established to end of row—92 (100, 108, 116, 116) sts.

**Rows 3 and 4:** Bind off 3 sts, continue in pattern as established to end of row—86 (94, 102, 110, 110) sts.

**Rows 5–14:** Bind off 1 st, continue in pattern as established to end of row—76 (84, 92, 100, 100) sts.

Work even in pattern as established until armholes measure 7½ (8, 8½, 9, 9½)" (19 (20.5, 21.5, 23, 24) cm), end with a wrong side row. Note: Back should measure about 23 (23½, 24, 24½, 25)" (58.5 (59.5, 61, 62, 63.5) cm) from beginning.

**Next Row (right side):** Bind off first 3 sts, bind off and decrease across 16 sts of large cable, as follows: Slip st on right needle back to left needle, [k2tog] twice, lift 2nd st on right needle over first st and off needle (decreasing bind off complete), \*k2tog, lift 2nd st on right needle over first st and off needle; repeat from \* 6 more times, bind off 38 (46, 54, 62, 62) sts to next large cable, bind off and decrease across 16 sts of large cable as before, bind off all remaining sts.

### LEFT FRONT

With smaller needles, cast on 48 (52, 60, 64, 68) sts.

Knit 5 rows.

**Next Row (right side):** P3, place marker, k12 (12, 16, 16, 20), place marker, p3, [kfb] 8 times, p3, place marker, k16 (20, 24, 28, 28), place marker, p3—56 (60, 68, 72, 76) sts. Change to larger needles.

**Next Row (wrong side):** K3, slip marker, purl to next marker, slip marker, k3, p16, k3, slip marker, purl to last marker, slip marker, k3.

### Begin Cable Patterns

**Set-Up Row (right side):** P3, slip marker, work Row 1 of Honeycomb Cable pattern to next marker, slip marker, work Row 1 of Large Right Twist Cable pattern to next marker, slip marker, work Row 1 of Honeycomb Cable pattern to last marker, slip marker, p3.

**Next Row (wrong side):** K3, slip marker, work next row of Honeycomb Cable pattern to next

marker, slip marker, work next row of Large Right Twist Cable pattern to next marker, slip marker, work next row of Honeycomb Cable pattern to last marker, slip marker, k3.

**Next Row (right side):** P3, slip marker, work next row of Honeycomb Cable pattern to next marker, slip marker, work next row of Large Right Twist Cable pattern to next marker, slip marker, work next row of Honeycomb Cable pattern to last marker, slip marker, p3.

Work in pattern as established, by repeating the last 2 rows keeping the first and last 3 sts in Reverse Stockinette st (purl on right side, knit on wrong side) and working the next row of each cable pattern between markers, until piece measures 15½" (39.5 cm) from beginning, end with a wrong side row.

### Shape Armhole

**Row 1 (right side):** Bind off 7 (7, 11, 11, 15) sts, continue in pattern as established to end of row—49 (53, 57, 61, 61) sts.

**Row 2:** Work even in pattern as established.

**Row 3:** Bind off 3 sts, continue in pattern as established to end of row—46 (50, 54, 58, 58) sts.

**Row 4:** Work even in pattern as established.

**Row 5:** Bind off 1 st, continue in pattern as established to end of row—45 (49, 53, 57, 57) sts.

**Rows 6–13:** Repeat last 2 rows 4 more times—41 (45, 49, 53, 53) sts.

Work even in pattern as established until piece measures 18½ (19, 19½, 20, 20½)" (47 (48.5, 49.5, 51, 52) cm) from beginning, end with a right side row.

### Shape Neck

**Row 1 (wrong side):** Bind off 10 (14, 18, 22, 22) sts, continue in pattern as established to end of row—31 sts.

**Row 2:** Work even in pattern as established.

**Row 3:** Bind off 3 sts, continue in pattern as established to end of row—28 sts.

**Row 4:** Work even in pattern as established.

**Row 5:** Bind off 2 sts, continue in pattern as established to end of row—26 sts.

**Row 6:** Work even in pattern as established.

**Row 7:** Bind off 1 st, continue in pattern as established to end of row—25 sts.

**Rows 8–13:** Repeat last 2 rows 3 more times—22 sts.

Work even in pattern as established until piece measures same as back, end with a wrong side row.

**Next Row (right side):** Bind off first 3 sts, bind off and decrease across 16 sts of large cable, as follows: Slip st on right needle back to left needle, [k2tog] twice, lift 2nd st on right needle over first st and off needle (decreasing bind off complete), \*k2tog, lift 2nd st on right needle over first st and off needle; repeat from \* 6 more times, bind off all remaining sts.

**Mark for buttons:** Place markers across left front edge for button placement, as follows: Place first marker about ½" (1.5 cm) below neck edge, second marker about 2½ (3, 3, 3½, 3½)" (6.5 (7.5, 7.5, 9, 9) cm) below first marker, and last marker about 5 (6, 6, 7, 7)" (12.5 (15, 15, 18, 18) cm) below second marker.

### RIGHT FRONT

With smaller needles, cast on 48 (52, 60, 64, 68) sts.

Knit 5 rows.

**Next Row (right side):** P3, place marker, k16 (20, 24, 28, 28), place marker, p3, [kfb] 8 times, p3, place marker, k12 (12, 16, 16, 20), place marker, p3—56 (60, 68, 72, 76) sts. Change to larger needles.

**Next Row (wrong side):** K3, slip marker, purl to next marker, slip marker, k3, p16, k3, slip marker, purl to last marker, slip marker, k3.

Continued...

## Begin Cable Patterns

**Set-Up Row (right side):** P3, slip marker, work Row 1 of Honeycomb Cable pattern to next marker, slip marker, work Row 1 of Large Left Twist Cable pattern to next marker, slip marker, work Row 1 of Honeycomb Cable pattern to last marker, slip marker, p3.

**Next Row (wrong side):** K3, slip marker, work next row of Honeycomb Cable pattern to next marker, slip marker, work next row of Large Left Twist Cable pattern to next marker, slip marker, work next row of Honeycomb Cable pattern to last marker, slip marker, k3.

**Next Row (right side):** P3, slip marker, work next row of Honeycomb Cable pattern to next marker, slip marker, work next row of Large Left Twist Cable pattern to next marker, slip marker, work next row of Honeycomb Cable pattern to last marker, slip marker, p3. Work in pattern as established, by repeating the last 2 rows keeping the first and last 3 sts in Reverse Stockinette st (purl on right side, knit on wrong side) and working the next row of each cable pattern between markers, until piece measures same length as left front to lowest button marker, end with a wrong side row.

**Buttonhole Row (right side):** P1, p2tog, yo, continue in pattern as established to end of row. From here on, repeat Buttonhole Row (on right side row) each time piece reaches same length as left front to next two button markers. Work in pattern as established until piece measures 15½" (39.5 cm) from beginning, end with a right side row.

## Shape Armholes

**Row 1 (wrong side):** Bind off 7 (7, 11, 11, 15) sts, continue in pattern as established to end of row—49 (53, 57, 61, 61) sts.

**Row 2:** Work even in pattern as established.

**Row 3:** Bind off 3 sts, continue in pattern as established to end of row—46 (50, 54, 58, 58) sts.

**Row 4:** Work even in pattern as established.

**Row 5:** Bind off 1 st, continue in pattern as established to end of row—45 (49, 53, 57, 57) sts.

**Rows 6–13:** Repeat last 2 rows 4 more times—41 (45, 49, 53, 53) sts.

Work even in pattern as established until piece measures 18½ (19, 19½, 20, 20½)" (47 (48.5, 49.5, 51, 52) cm) from beginning, end with a wrong side row.

## Shape Neck

**Row 1 (right side):** Bind off 10 (14, 18, 22, 22) sts, continue in pattern as established to end of row—31 sts.

**Row 2:** Work even in pattern as established.

**Row 3:** Bind off 3 sts, continue in pattern as established to end of row—28 sts.

**Row 4:** Work even in pattern as established.

**Row 5:** Bind off 2 sts, continue in pattern as established to end of row—26 sts.

**Row 6:** Work even in pattern as established.

**Row 7:** Bind off 1 st, continue in pattern as established to end of row—25 sts.

**Rows 8–13:** Repeat last 2 rows 3 more times—22 sts.

Work even in pattern as established until piece measures same as back, end with a wrong side row.

**Next Row (right side):** Bind off same as for left front.

## FINISHING

Sew shoulder seams.

## Armhole Bands

With right side facing and smaller needles, pick up and k80 (88, 96, 104, 112) sts evenly spaced across armhole edge.

Continued...



Knit 4 rows.  
Bind off as if to knit (on wrong side). Repeat across other armhole edge.  
Sew side seams.

### Left Front Band

With right side facing and smaller needles, beginning at left front neck edge, pick up and k95 (98, 100, 103, 105) sts evenly spaced across left front edge.

**Next Row (wrong side):** Knit.

**Next Row (right side):** Purl.

Repeat last 2 rows once more.

Bind off as if to knit (on wrong side).

### Right Front Band

Work same as left front band, across right front edge and beginning at lower front corner of edge.

### Neck Edging

With right side facing and smaller needles, beginning at right front neck, pick up and k30 (34, 38, 42, 42) sts evenly spaced across right front neck edge to right shoulder, pick up and k30 (38, 46, 54, 54) sts across back neck to left shoulder, pick up and k30 (34, 38, 42, 42) sts across left front neck edge—90 (106, 122, 138, 138) sts.

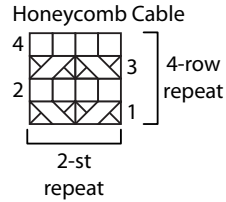
Knit 4 (4, 6, 6, 6) rows.

Bind off as if to knit (on wrong side).

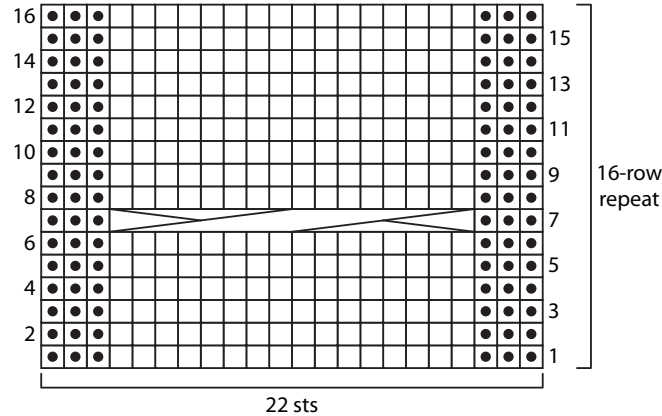
With sewing needle and thread, sew buttons to left front band where indicated by markers.  
Weave in ends.

### ABBREVIATIONS

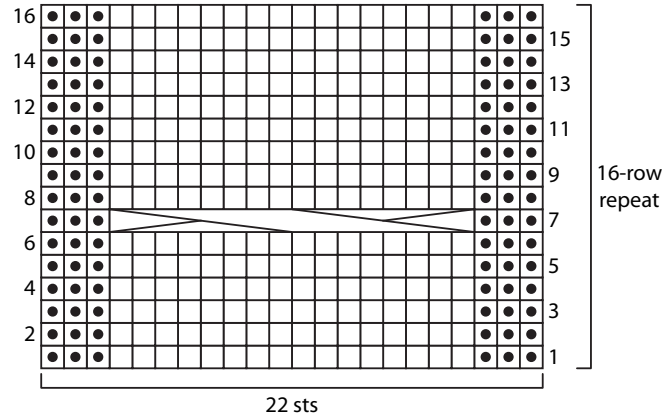
**k** = knit; **k2tog** = knit next 2 sts together; **p** = purl; **st(s)** = stitch(es); \* = repeat whatever follows the \* as indicated.



Large Right Twist Cable



Large Left Twist Cable



□ k on RS, p on WS

▣ p on RS, k on WS

⊘ LT = Left Twist.

⊘ RT = Right Twist.

⊘ 8/8 LC = 8 over 8 Left Cross.

⊘ 8/8 RC = 8 over 8 Right Cross.

