



stitch Nation

BY DEBBIE STOLLER™



study hall vest

SN0115



Designed by Vladimira Cmorej.

Directions are for size Small; changes for sizes Medium, Large, XLarge and XXL large are in parentheses.

Finished Bust: 33½, (37½, 41½, 45½, 49½)".
Finished Length: 21¾ (22½, 23½, 24¼, 25¼)".

STITCH NATION by Debbie Stoller™ "Full o' Sheep™": 3 (4, 4, 5, 6) balls 2925 Passionfruit.

Knitting Needles: 4.5mm [US 7].

Circular Knitting Needles: 4.5mm [US 7] 32".

Cable needle, stitch markers (4), stitch holders (2), yarn needle.

GAUGE: 17 sts = 4"; 22 rows = 4" in St st. CHECK YOUR GAUGE. Use any size needles to obtain the gauge given.

NOTES

2 selvage stitches are included in the stitch count, but are not included in finished measurements.

When following charts, read odd numbered rows from right to left for a right side row and even numbered rows from left to right for a wrong side row.

Special Abbreviations

Ssk: Slip 2 sts knitwise one at a time to right needle, insert point of left needle into front of sts, and knit them together.

2/1 RPC = Slip next st to cable needle, hold to back, k2; p1 from cable needle.

2/1 LPC = Slip next 2 sts to cable needle, hold to front, p1; k2 from cable needle.

2/1 RC = Slip next st to cable needle, hold to back, k2; k1 from cable needle.

2/1 LC = Slip next 2 sts to cable needle, hold to front, k1; k2 from cable needle.

2/2 RC = Slip next 2 sts to cable needle, hold to back, k2; k2 from cable needle.

2/2 LC = Slip next 2 sts to cable needle, hold to front, k2; k2 from cable needle.

Bobble = (k1, yo, k1, yo, k1) in same st, turn, p5, turn, ssk, k1, ssk, turn, p3tog, turn, slip 1 st purlwise.

K1, p1 Rib (worked over an even number of sts)

Row 1 (Wrong Side): * P1, k1; repeat from * to end.

Repeat Row 1 for K1, p1 rib pattern.

VEST

Back

With knitting needles, cast on 76 (84, 92, 102, 110) sts.

Work in K1, p1 rib for 5 rows.

Begin with a k row, work even in St st until piece measures 2½" from beginning, end wrong side row.

For more ideas & inspiration -

www.redheart.com

www.stitchnation.com

www.coatsandclark.com



stitch Nation

BY DEBBIE STOLLER™

Shape Waist

Next Row (Dec) (Right Side): K2, ssk, work across row to last 4 sts, k2tog, k2. Repeat Dec Row every 6th row 3 times—68 (76, 84, 94, 102) sts.

Work even until piece measures 8 (8, 8¼, 8¼, 8¾)" from beginning, end wrong side row.

Next Row (Inc) (Right Side): K2, k into front and back of next st, work across row to last 4 sts, k into front and back of next st, k3. Repeat Inc Row every 8th row 3 times—76 (84, 92, 102, 110) sts.

Work even until piece measures 14 (14¼, 14¾, 15, 15½)" from beginning, end wrong side row.

Shape Armholes

Bind off 3 (4, 5, 6, 7) sts at beginning of next 2 rows, 2 sts at beginning of next 4 (4, 4, 6, 8) rows, 1 st at beginning of next 8 (8, 10, 10, 12) rows—54 (60, 64, 68, 68) sts.

Work even until armholes measure 4½ (5, 5¼, 5¾, 5¾)" , end wrong side row.

Shape Neck

Next Row (Right Side): K20 (21, 22, 23, 23) sts; place center 14 (18, 20, 22, 22) sts on stitch holder; join a second ball of yarn and work to end. Working both sides at once with separate balls of yarn, bind off at each neck edge 3 (3, 3, 4, 4) sts once, 2 sts 2 (2, 2, 3, 3) times, 1 st 3 (4, 5, 3, 3) times—10 sts remain each side.

Work even until armholes measure 7¾ (8¼, 8¾, 9¼, 9¾)" , end wrong side row. Bind off for shoulders.

Front

With knitting needles, cast on 76 (84, 92, 102, 110) sts. Work K1, p1 rib same as for Back.

Setup Chart Patterns

Next Row (Right Side): K8 (9, 11, 14, 18), p4, place marker, work Row 1 of Cable pattern from chart over next 8 sts, p0 (3, 5, 7, 7), place marker, work Row 1 of Cables & Bobbles pattern from chart over center 36 sts, place marker, p0 (3, 5, 7, 7), work Row 1 of Cable Pattern from chart over next 8 sts, place marker, p4, k8 (9, 11, 14, 18).

Next Row: Work 8 (9, 11, 14, 18) sts in St st, 4 sts in Rev St st, 8 sts in Cable pattern as established, 0 (3, 5, 7, 7) sts in Rev St st, 36 sts in Cable and Bobbles pattern as established between

markers, 0 (3, 5, 7, 7) sts in Rev St st, 8 sts in Cable pattern as established, 4 sts in Rev St st, 8 (9, 11, 14, 18) sts in St st.

Keeping continuity of pattern, work same as for Back until armhole measures 2 (2½, 2¾, 3¼, 3¼)" , end wrong side row.

Shape Neck

Next Row (Right Side): Work 20 (21, 22, 23, 23) sts; place center 14 (18, 20, 22, 22) sts on stitch holder, join a second ball of yarn and work to end. Working both sides at once with separate balls of yarn, bind off at each neck edge 3 (3, 3, 4, 4) sts once, 2 sts 2 (2, 2, 3, 3) times, 1 st 3 (4, 5, 3, 3) times—10 sts each side.

Work even until piece measures same as Back to shoulder. Bind off.

FINISHING

Sew right shoulder seam.

Neckband

With right side facing and circular needle, pick up and k28 (29, 30, 31, 33) sts along left front neck edge, 14 (18, 20, 22, 22) sts from front stitch holder, 27 (28, 29, 30, 32) sts along right front neck edge, 19 (20, 21, 22, 24) sts along right back neck edge, 14 (18, 20, 22, 22) sts from back stitch holder, 20 (21, 22, 23, 25) sts along left back neck edge—122 (134, 142, 150, 158) sts. Work back and forth in K1, p1 rib for 3 rows. Bind off loosely in rib.

Sew left shoulder seam including neckband.

Armbands

With right side facing and circular needle, pick up and k72 (80, 86, 92, 98) sts evenly around armhole edge. Work back and forth in K1, p1 rib for 3 rows. Bind off loosely in rib.

Sew side seams including armhole bands. Weave in yarn ends.



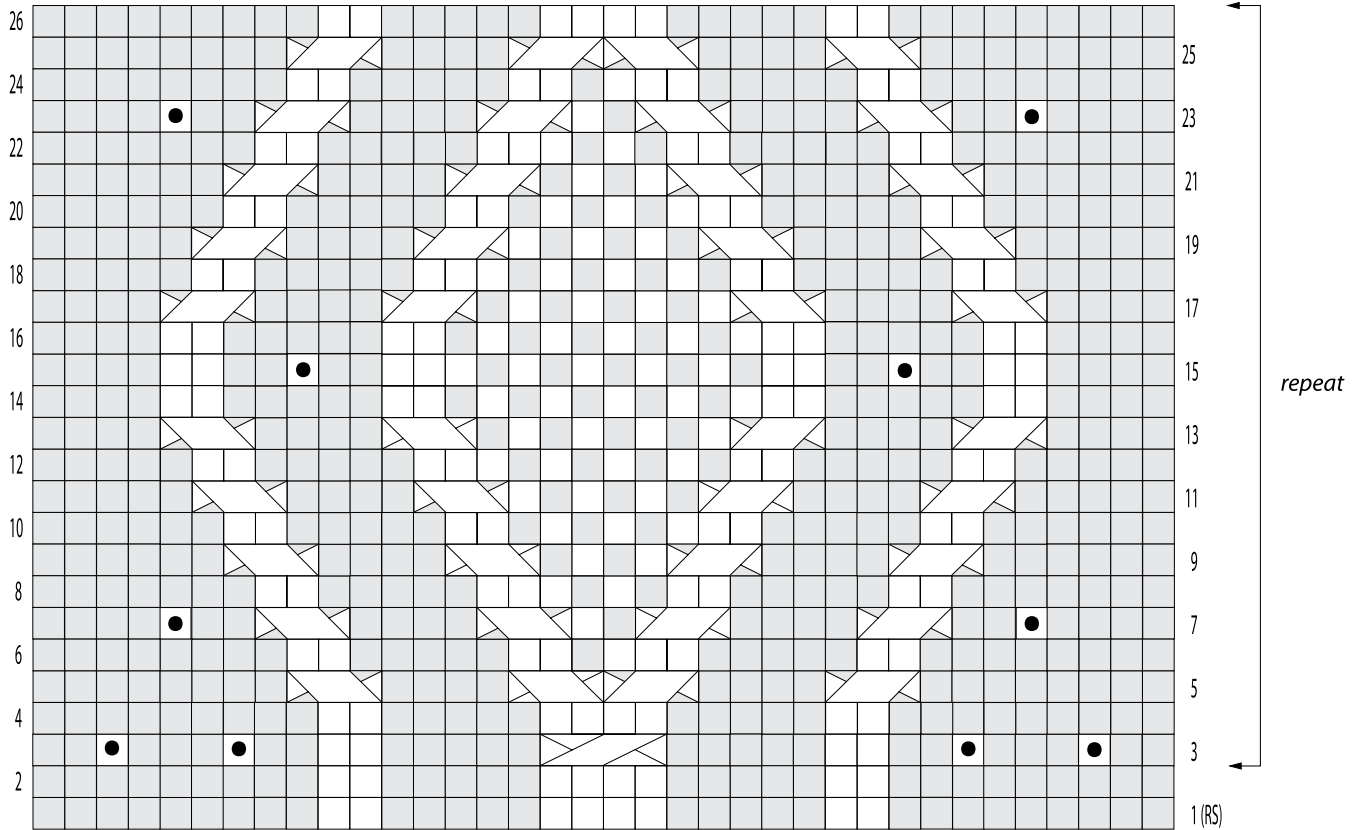
STITCH NATION by Debbie Stoller™ "Full o' Sheep™" Art. T100 available in 3.5 oz (100 g); 155 yd (142 m) balls.

ABBREVIATIONS: cn = cable needle; Dec = decrease; inc = increase; k = knit; tog = together; p = purl; Rev St st = Reverse St st (p on right side rows, k on wrong side rows); st(s) = stitch(es); St st = Stockinette stitch (k on right side rows, p on wrong side rows); yo = yarn over needle; * or ** = repeat whatever follows the * or ** as indicated.

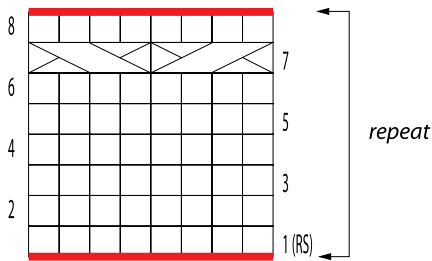


stitch Nation



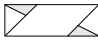
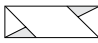
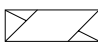
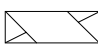
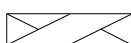
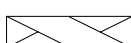

BY DEBBIE STOLLER™



CABLE PATTERN - LEFT & RIGHT SIDE OF FRONT



STITCH KEY

-  k on right side, p on wrong side
-  p on right side, k on wrong side
-  **2/1 RPC** - slip next st to cn, hold to back, k2, p1 from cn
-  **2/1 LPC** - slip next 2 sts to cn, hold to front, p1, k2 from cn
-  **2/1 RC** - slip next st to cn, hold to back, k2, k1 from cn
-  **2/1 LC** - slip next 2 sts to cn, hold to front, k1, k2 from cn
-  **2/2 RC** - slip next 2 sts to cn, hold to back, k2, k2 from cn
-  **2/2 LC** - slip next 2 sts to cn, hold to front, k2, k2 from cn
-  **Bobble** - (k1, yo, k1, yo, k1) in same st, turn, p5, turn, ssk, k1, ssk, turn, p3tog, turn, sl1 purlwise