



KNIT | SKILL LEVEL: INTERMEDIATE

ABBREVIATIONS

Approx = Approximately
Beg = Beginning
Cont = Continue(ity)
Dec = Decreasing
Inc = Increasing
K = Knit
K2tog = Knit next 2 stitches together
Pat = Pattern
P = Purl

PM = Place marker
Rep = Repeat
RS = Right side
Ssk = Slip next 2 stitches knitwise one at a time. Pass them back onto left-hand needle, then knit through back loops together
St(s) = Stitch(es)
WS = Wrong side

SIZES

To fit bust measurement

XS/S 28-34" [71-86.5 cm]
M 36-38" [91.5-96.5 cm]
L 40-42" [101.5-106.5 cm]
XL 44-46" [112-117 cm]
2/3XL 48-54" [122-137 cm]
4/5XL 56-62" [142-157.5 cm]

Finished bust

XS/S 37" [94 cm]
M 41" [104 cm]
L 44" [112 cm]
XL 49" [124.5 cm]
2/3XL 58" [147.5 cm]
4/5XL 66½" [169 cm]

GAUGE

18 sts and 24 rows = 4" [10 cm] in stocking st.

INSTRUCTIONS

The instructions are written for smallest size. If changes are necessary for larger size(s) the instructions will be written thus (). Numbers for each size are shown in the same color throughout the pattern. When only one number is given in black, it applies to all sizes.

Note: Body and Sleeves are worked in the round from lower edge up separately then joined into Yoke.

MATERIALS

Red Heart® Chic Sheep™ (3.5 oz/100 g; 186 yds/170 m)

Sizes	XS/S	M	L	XL	2/3XL	4/5XL	
Main Color (MC)							
Stiletto (5312)	2	2	2	3	3	4	balls
Contrast A							
Platinum (5640)	2	2	3	3	4	4	balls
Contrast B							
Sterling (5641)	2	3	3	3	4	5	balls
Contrast C							
Linen (5316)	2	2	3	3	4	4	balls

Size U.S. 8 (5 mm) circular knitting needle 29" [75 cm] long. Set of 4 size U.S. 8 (5 mm) double-pointed knitting needles **or size needed to obtain gauge.** Stitch marker. 2 stitch holders.

When working from chart, carry yarn not in use loosely across WS of work. The colors are never twisted around one another.

Stripe Pat: A – 3 rnds, B – 2 rnds, C – 3 rnds, B – 2 rnds.

These 10 rnds form Stripe Pat.

BODY

With A and circular needle, cast on **166** (184-200-220-260-300) sts. Join in rnd, PM on first st.

Proceed in Stripe Pat as follows:

1st rnd: *With A, K1. P1. Rep from * around.

2nd rnd: *K1. P1. Rep from * around.

First 2 rnds of Stripe Pat are complete.

Keeping cont of Stripe Pat, rep last rnd of (K1. P1) ribbing for 3" [7.5 cm].

Keeping cont of Stripe Pat, knit in rnds until work from beg measures approx **15** (15-16½-16½-15-15)" [**38** (38-42-42-38-38) cm], ending on 10th rnd of Stripe Pat.

Next rnd: *With A, K**83** (92-100-110-130-150). Slip last **8** (11-14-14-18-18) sts onto a length of yarn for underarm. Rep from * once more. Leave all sts on a spare needle.

SLEEVES

With set of double-pointed needles and A, cast on **46** (46-48-50-54-54) sts. Divide sts onto 3 needles. Join in rnd, PM on first st.

Proceed in Stripe Pat, work in (K1. P1) ribbing as given for Body for 3" [7.5 cm].

Keeping cont of Stripe Pat, knit in rnds, inc 1 st at beg and end of next and every following **8th** (8th-8th-6th-4th-4th) rnd to **64** (66-68-76-84-90) sts.

Cont even until work from beg measures approx **18** (18-18-18-16½-16½)" [**45.5** (45.5-45.5-45.5-42-42) cm], ending on 10th rnd of Stripe Pat.

Next rnd: With A, K**60** (61-61-69-75-79). Slip last **4** (5-7-7-9-9) sts and first **4** (6-7-7-9-9) sts of rnd onto a st holder for underarm. Break yarn. Leave rem **56** (55-54-

62-66-72) sts on length of yarn.

YOKE

Keeping cont of Stripe Pat throughout Yoke, proceed as follows:

1st rnd: With A, *K**56** (55-54-62-66-72) for sleeve. PM on needle. K**75** (81-86-96-112-132) for body. PM on needle. Rep from * once more. **262** (272-280-316-356-408) sts.

2nd rnd: Knit, inc **1** (dec 1-dec 1-inc 1-dec 1-0) st at beg of rnd. **263** (271-279-317-355-408) sts.

3rd rnd: (K2tog. Knit to 2 sts before marker. ssk) 4 times.

Knit 3 rnds even.

Rep last 4 rnds **0** (1-2-3-4-5) time(s) more. **255** (255-255-285-315-360) sts.

Keeping cont of Stripe Pat as background of Chart, work chart to end of chart, *reading rnds from right to left* and noting 15-st rep will be worked **17** (17-17-19-21-24) times. Break A and B. **68** (68-68-76-84-96) sts.

Chart is shown on page 3.

Collar: Next rnd: With MC, *K1. P1. Rep from * around.

Rep last rnd of (K1. P1) ribbing for 5" [12.5 cm]. Cast off in rib.

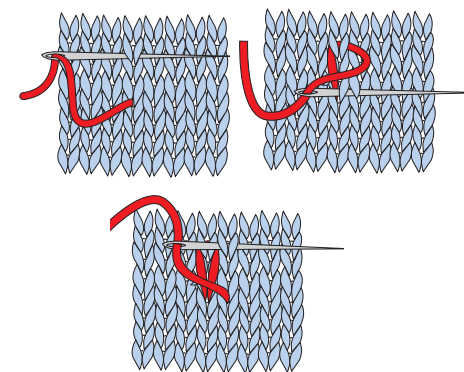
FINISHING

Pin garment to measurements. Cover with a damp cloth leaving cloth to dry.

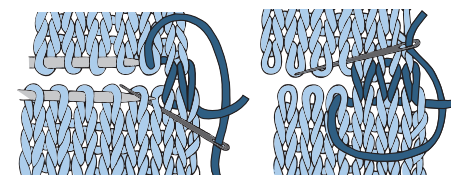
Graft underarms.

Following Embroidery Chart, embroider extensions of 'rays' at Front only with duplicate st, working each st over 2 rows.

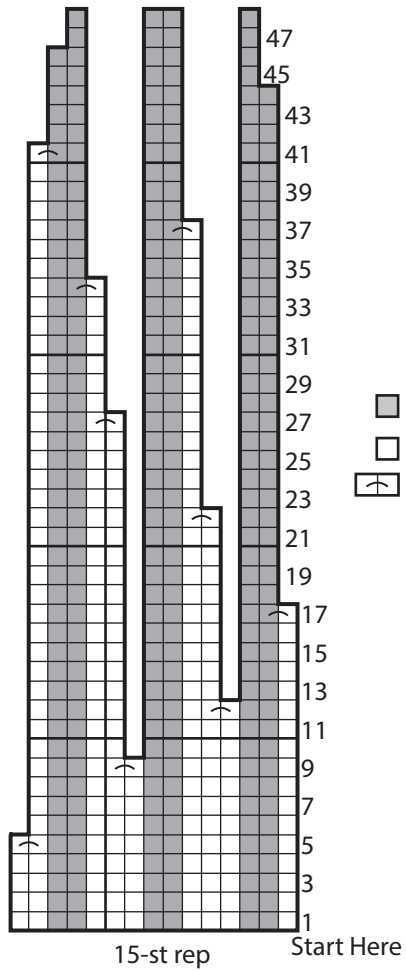
Duplicate st diagrams



Grafting



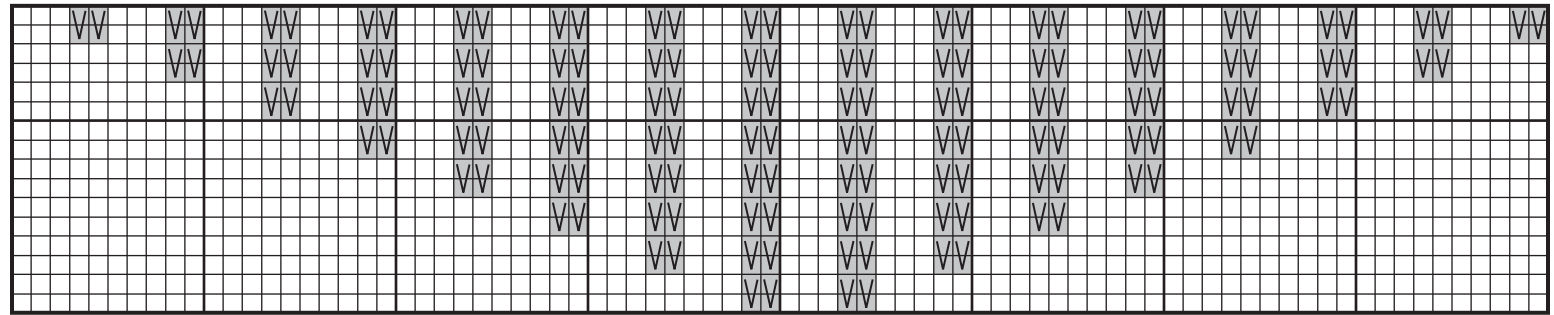
Chart



Key

- = MC
- = Stripe Pat
- = K2tog

Embroidery Chart



Key

- With MC, duplicate st
- Stripe Pat

