



KNIT
SKILL LEVEL
EXPERIENCED

Designed by Sandy Huff

What you will need:

RED HEART® Boutique Midnight®:
5 (6, 7, 7, 8) balls 1942 Serenade A

RED HEART® Boutique Treasure™:
2 (2, 3, 3, 3) balls 1923 Tapestry B

Susan Bates® Knitting Needles:
5.5mm [US 9]

Stitch markers (ring and removable), seven 1" (25 mm) buttons, yarn needle

GAUGE: 16½ sts = 4" (10 cm); 22 rows = 4" (10 cm) in Stockinette st (knit on right side, purl on wrong side). **CHECK YOUR GAUGE.** Use any size needles to obtain the gauge.



RED HEART® Boutique Midnight® Art. E786, Available in 2.5 oz (70g), 153 yd (140m) balls



RED HEART® Boutique Treasure™ Art E788 available in 3.5 oz (100 g), 151 yds (138 m) balls



Fair Isle Cardigan

You only need to use two different yarns to make this wonderful Fair Isle look cardigan.

These two shaded fashion yarns give the design dimension and interest not possible with two solid yarn colors.

Directions are for size **Small**. Changes for sizes **Medium, Large, 1X, and 2X** are in parentheses.

To Fit Busts: 32-34 (36-38, 40-42, 44-46, 48-50)" (81.5-86.5 (91.5-96.5, 101.5-106.5, 112-117, 122-127) cm)

Finished Bust: 35 (39, 43½, 46½, 50½)" (89 (99, 110.5, 118, 128.5) cm)

Finished Length: 21½ (21¾, 22, 22¼, 22½)" (54.5 (55, 56, 56.5, 57) cm), not including neckband

Special Stitch

ssk = Slip next 2 stitches, one at a time as if to knit, to right needle, insert point of left needle through front of sts, knit these sts together through back loop.

Special Technique

4-st Buttonhole: K2, bring yarn to front, slip next st as if to purl, take yarn to back, *slip next st as if to purl, pass 2nd st on right needle over slipped st and off the needle (one st bound off); repeat from * until 4 sts have been bound off, place last st back on left needle. Turn work. **Place right needle tip between sts 1 and 2 on left needle and draw up a loop to create a new st, place new st onto left needle; repeat from ** until 5 new sts have been made. Turn work. Take yarn to back, slip 1 st from left needle to right needle as if to purl, pass 2nd st on right needle over slipped st and off the needle. Work to end of row as instructed.

Pattern Stitch

Seed st (over an even number of sts)

Row 1 (right side): *K1, p1; repeat from * to end of row.

Row 2: Knit the purl sts and purl the knit sts as they appear.

Repeat Row 2 for Seed st.

Notes

1. Cardi is worked in 5 pieces: Back, left front, right front, and 2 sleeves.
2. A charted Fair Isle color pattern is worked on the left front and right front. Carry color not in use carefully across wrong side of work until next needed.
3. Blocking is necessary for this project as the Seed stitch portions will be stretched during blocking.

BACK

With **A**, cast on 72 (80, 90, 96, 104) sts.

Work in Seed st until piece measures about 2" (5 cm) from beginning.

Work in Stockinette st (knit on right side, purl on wrong side) until piece measures about 20 (20¼, 20½, 20¾, 21)" (51 (51.5, 52, 52.5, 53.5) cm) from beginning; end with a wrong side row.

Shape Neck

Row 1 (right side): K31 (34, 39, 42, 46) sts, bind off center 10 (12, 12, 12, 12) sts, knit to end of row—31 (34, 39, 42, 46) sts remain on each side of neck for shoulders.

Row 2: Purl across the 31 (34, 39, 42, 46) sts of first side of neck, join a 2nd ball of yarn and purl across the sts of the other side of neck. Work both sides at the same time with separate balls of yarn.

Row 3: Knit across all sts of first side; bind off 3 (3, 3, 3, 4) sts at beginning of next side, knit to end of side.

Row 4: Purl across all sts of first side; bind off 3 (3, 3, 3, 4) sts at beginning of next side, purl to end of side – 28 (31, 36, 39, 42) sts remain on each side.

Row 5: Knit across all sts of first side; bind off 3 sts at beginning of next side, knit to end of side.

Continued...

SHOP KIT

Row 6: Purl across all sts of first side; bind off 3 sts at beginning of next side, purl to end of side – 25 (28, 33, 36, 39) sts remain on each side.

Rows 7 and 8: Repeat Rows 5 and 6—22 (25, 30, 33, 36) sts remain on each side.

Bind off all sts on both sides.

Place a removable marker on each side edge, 7 (7½, 8, 8½, 9)" (18 (19, 20.5, 21.5, 23) cm) down from shoulder to indicate bottom of armhole.

LEFT FRONT

With **A**, cast on 42 (48, 52, 56, 60) sts.

Work in Seed st until piece measures about 2" (5 cm) from beginning; end with a wrong side row.

Begin Left Front Fair Isle Chart Notes

1. Work in Stockinette st and change color as in Left Front chart.
2. When neck shaping begins, take care to line up the stitches, adjusting for the decreased stitches, to maintain the color pattern.
3. Take care to begin knitting at location on chart indicated for your size. This will ensure that the left and right front are mirror-images.

Row 1 (right side): Work Row 1 of Left Front chart to last 8 sts, place marker (pm), work in Seed st over last 8 sts for button band.

Row 2: Work in Seed st to marker, slip marker (sm), work next row of chart to end of row.

Row 3: Work next row of chart to marker, sm, work in Seed st to end of row.

Repeat last 2 rows until piece measures 15¾ (16, 16¼, 16½, 16¾)" (40 (40.5, 41.5, 42, 42.5) cm) from beginning; end with a right side row.

Shape Neck

Note: After all button band sts have been bound-off, remove button band marker and work remaining rows in charted pattern only.

Row 1 (wrong side): Bind off 2 (5, 4, 5, 6) sts, work in Seed st to marker, sm, work next row of chart to end of row—40 (43, 48, 51, 54) sts.

Row 2: Work next row of chart to marker, sm, work in Seed st to end of row.

Row 3: Bind off 3 sts, work in Seed st to marker, sm, work next row of chart to end of row—37 (40, 45, 48, 51) sts.

Rows 4-13: Repeat last 2 rows five more times—22 (25, 30, 33, 36) sts.

Work even in Stockinette st and continue to change color as in chart until piece measures same as back.

Bind off.

Place a removable marker on side edge 7 (7½, 8, 8½, 9)" (18 (19, 20.5, 21.5, 23) cm) down from shoulder, to indicate bottom of armhole.

RIGHT FRONT

With **A**, cast on 42 (48, 52, 56, 60) sts.

Work in Seed st until piece measures about 1" (2.5 cm) from beginning; end with a wrong side row.

Buttonhole Row (right side): Work 4-stitch buttonhole (see Special Technique), continue in Seed st to end of row.

Work in Seed st until piece measures about 2" (5 cm) from beginning; end with a wrong side row.

Continued...





Begin Fair Isle Chart

Notes

1. Work in Stockinette st and change color as in Right Front chart. Depending on the size being made, you will not complete the last repeat of the chart. Take care to begin wrong side rows at the same place on chart where first right side row ended.
2. When neck shaping begins, take care to line up the stitches, adjusting for the decreased stitches, to maintain the color pattern.
3. Work as instructed and measure the piece from time to time. Each time the piece measures 3 (3, 3, 3, 3¼)" (7.5 (7.5, 7.5, 7.5, 8.5) cm) from the last buttonhole row worked, work another 4-st buttonhole at the beginning of the next right side row. Stop working buttonholes when a total of 6 buttonholes have been made. The 7th buttonhole is worked when the neckband is added.

Row 1 (right side): Work in Seed st over first 8 sts, pm, work Row 1 of Right Front chart to end of row.

Row 2: Work next row of chart to marker, slip marker (sm), work in Seed st to end of row.

Row 3: Work in Seed st to marker, sm, work next row of chart to end of row.

Repeat last 2 rows until piece measures 15¾ (16, 16¼, 16½, 16¾)" (40 (40.5, 41.5, 42, 42.5) cm) from beginning; end with a wrong side row.

Shape Neck

Note: After all button band sts have been bound-off, remove button band marker and work remaining rows in charted pattern only.

Row 1 (right side): Bind off 2 (5, 4, 5, 6) sts, work in Seed st to marker, sm, work next row of chart to end of row—40 (43, 48, 51, 54) sts.

Row 2: Work next row of chart to marker, sm, work in Seed st to end of row.

Row 3: Bind off 3 sts, work in Seed st to marker, sm, work next row of chart to end of row—37 (40, 45, 48, 51) sts.

Rows 4-13: Repeat last 2 rows five more times—22 (25, 30, 33, 36) sts.

Work even in Stockinette st and continue to change color as in chart until piece measures same as back.

Bind off.

Place a removable marker on side edge 7 (7½, 8, 8½, 9)" (18 (19, 20.5, 21.5, 23) cm) down from shoulder, to indicate bottom of armhole.

SLEEVES (make 2)

Note: Sleeve is worked from shoulder edge down to cuff edge.

With **A**, cast on 58 (62, 66, 70, 74) sts.

Row 1 (wrong side): Purl.

Row 2: Knit.

Row 3: Purl.

Row 4 (decrease row): K1, ssk, knit to last 3 sts, k2tog, k1—56 (60, 64, 68, 72) sts.

Repeat last 4 rows 11 (12, 13, 14, 16) times—34 (36, 38, 40, 40) sts.

Work even in Stockinette st until piece measures about 13½ (13½, 14, 14½)" (34.5 (34.5, 35.5, 35.5, 37) cm) from beginning.

Work in Seed st from 2" (5 cm).

Bind off.

FINISHING

Block pieces to schematic measurements.

Sew shoulder seams. Sew side seams, beginning at lower edge and ending at armhole markers, remove markers. Sew sleeve seams. Sew sleeves into armholes.

Neckband

With right side facing, beginning at right neck edge, pick up and k40 (44, 46, 48, 48) sts across right neck edge to shoulder seam, 30 (36, 38, 40, 40) sts across back neck edge, and 40 (44, 46, 48, 48) sts across left neck edge—110 (124, 130, 136, 136) sts.

Work in Seed st for 3 rows.

Buttonhole Row (right side): K2, work 4-st buttonhole, continue in Seed st to end of row.

Work in Seed st for 3 rows.

Bind off in pattern.

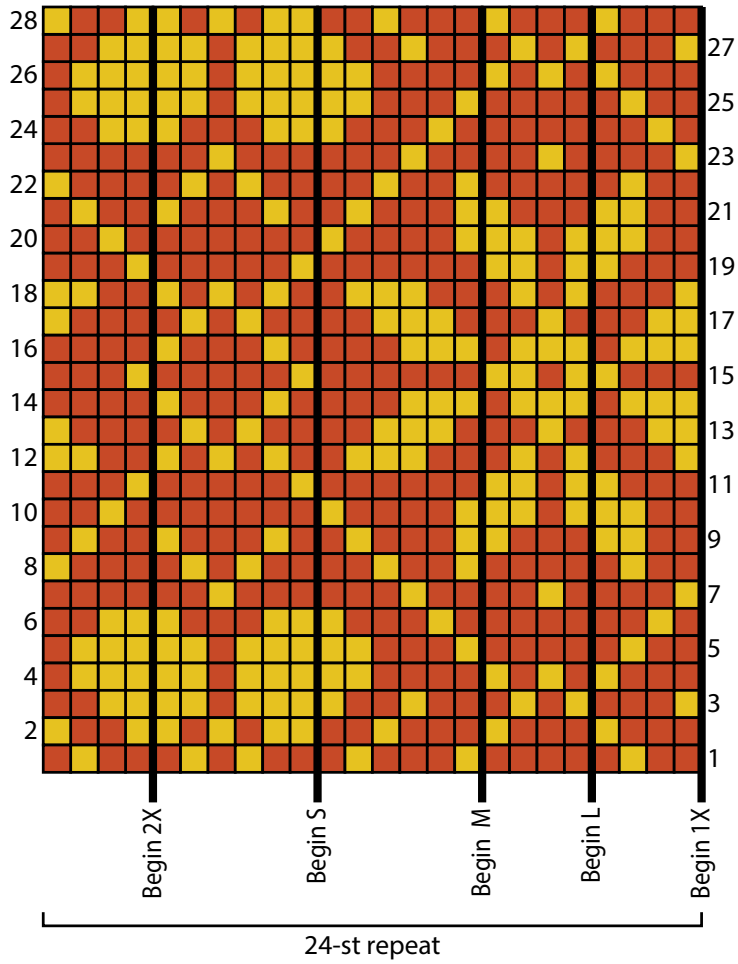
Weave in ends.

ABBREVIATIONS

A and **B** = Color A and Color B; **k** = knit; **k2tog** = knit next 2 sts together; **p** = purl; **sm** = slip marker; **st(s)** = stitch(es); ***** or ****** = repeat whatever follows the * or ** as indicated.

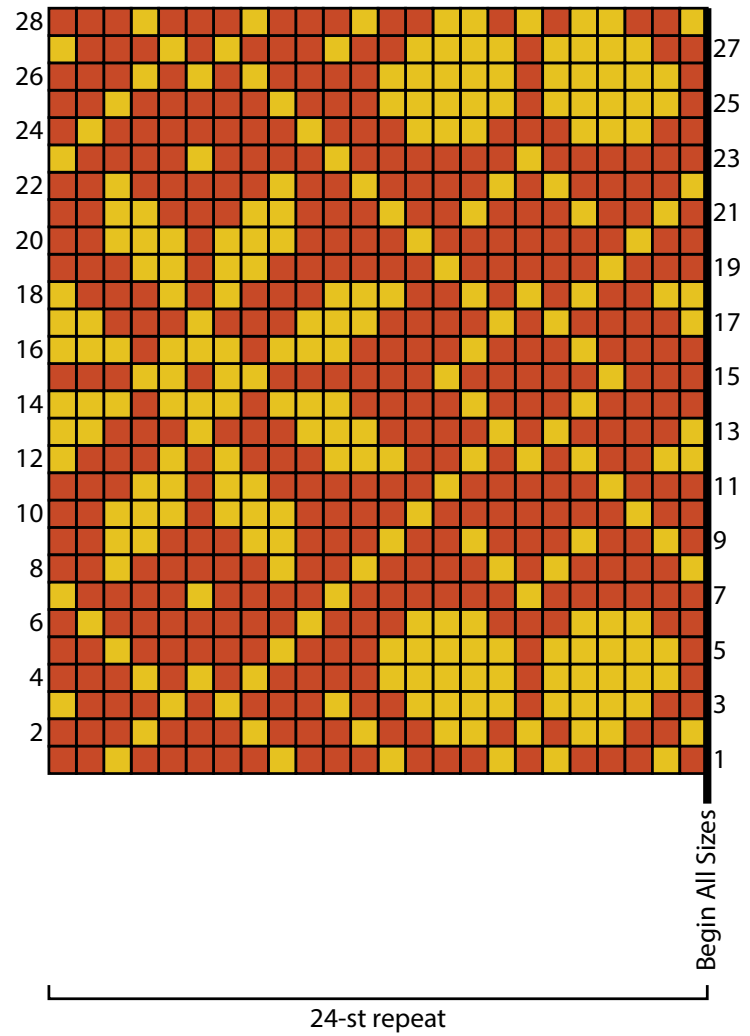
See charts and schematics on next 2 pages

Left Front Chart



Serenade (A)
 Tapestry (B)

Right Front Chart



See schematics on next page

