



KNIT | SKILL LEVEL: EASY

ABBREVIATIONS

Alt = Alternate(ing)

Approx = Approximately

Beg = Beginning

Cont = Continue(ity)

Dec = Decreasing

Inc = Increasing

K = Knit

K2(3)tog = Knit next 2(3) stitches together

Kfb = Increase 1 stitch by knitting into front and back of next stitch

P = Purl

Pat = Pattern

PM = Place marker

Pssso = Pass slipped stitch over

Rem = Remaining

Rep = Repeat

RS = Right side

Sl1 = Slip next stitch knitwise

Ssk = Slip next 2 stitches knitwise one at a time. Pass them back onto left-hand needle, then knit through back loops together

St(s) = Stitch(es)

Tog = Together

WS = Wrong side

Yo = Yarn over

SIZES

To fit chest measurement

S 28-46" [71-117 cm]

L 48-62" [122-157.5 cm]

Finished measurements (unfolded)

Approx **23½ (25)"** [59.5 (63.5) cm]

x 58" [147.5 cm]

GAUGE

17 sts and 23 rows = 4" [10 cm]

with larger needles in stocking st.

INSTRUCTIONS

*The instructions are written for smallest size. If changes are necessary for larger sizes the instructions will be written **S** (**L**). Numbers for each size are shown in the same color throughout the pattern. When only one number is given in black, it applies to both sizes.*

MATERIALS

Red Heart® Super Saver™ (7 oz/198 g; 364 yds/333 m)

Sizes	S	L	
Shocking Pink (0718)	3	3	balls
	850/775	990/900	yds/m

Sizes U.S. 6 (4 mm) and U.S. 8 (5 mm) Susan Bates® knitting needles or size needed to obtain gauge. Susan Bates® stitch markers. Susan Bates® yarn needle.

SHRUG

Notes:

- Shrug is worked flat in one piece from cuff to cuff then seamed.
- When working Sunray Pat, work (K1, P1) into each double yo.

With smaller needles, cast on **90 (96)** sts.

First Sleeve Cuff: Knit 6 rows, noting 1st row is WS.

Next row: (WS). *K**7 (8)**. Kfb. Rep from * to * 9 times more. Knit to end of row. **100 (106)** sts.

Change to larger needles and proceed in Sunray Pat as follows:

1st row: (RS). K**1 (3)**. *[yo. (K2tog) twice. yo. K2. K2tog. yo. K2. ssk. (yo) twice. K2tog. K2. yo. ssk. K2. yo. (ssk) twice. yo] twice.* K**2 (4)**. Rep from * to * once more. K**1 (3)**.

2nd and alt rows: K**1 (3)**. Purl to last **1 (3)** st(s), working (K1, P1) into each double yo. K**1 (3)**.

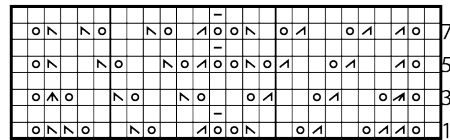
3rd row: K**1 (3)**. *[yo. K3tog. yo. (K2. K2tog. yo) twice. K2. (yo. ssk. K2) twice. yo. Sl1. K2tog. pssso. yo] twice.* K**2 (4)**. Rep from * to * once more. K**1 (3)**.

5th row: K**1 (3)**. *[yo. K2tog. (K2. K2tog. yo) twice. ssk. (yo) twice. K2tog. (yo. ssk. K2) twice. ssk. yo] twice.* K**2 (4)**. Rep from * to * once more. K**1 (3)**.

7th row: K**1 (3)**. *[yo. K2tog. K1. K2tog. yo. K2. K2tog. yo. K1. ssk. (yo) twice. K2tog. K1. yo. ssk. K2. yo. ssk. K1. ssk. yo] twice.* K**2 (4)**. Rep from * to * once more. K**1 (3)**.

8th row: As 2nd row.

These 1st to 8th rows form Sunray Pat.



Key

- = Knit on RS rows. Purl on WS rows.
- ▣ = Knit on WS rows. Purl on RS rows.
- ▤ = K2tog
- ▥ = K3tog
- ▧ = Sl1. K2tog. pssso.
- ▨ = ssk

Cont in pat until work from beg measures 24" [61 cm], ending on a WS row.

Divide for neck opening: 1st row: (RS). K**1 (3)**. Pat across 48 sts. K1. Cast off **0 (2)** sts. K1 (including st on needle after cast off). Pat across 48 sts. K**1 (3)**. PM at each end of row.

2nd row: K**1 (3)**. Pat across 48 sts, working (K1, P1) into each double yo. K1. **Turn.** Leave rem sts on a spare needle.

3rd row: K1. Pat across 48 sts. K**1 (3)**.

Cont in Sunray Pat across **50 (52)** sts as established, having garter edges at each end of row until work from marked row measures 10" [25.5 cm], ending on a WS row. Break yarn, leaving end approx 10" [25.5 cm] long. Slip sts onto a st holder.

With WS facing, rejoin yarn to **50 (52)** sts on a spare needle and proceed as follows:

1st row: (WS). K1. Pat across 48 sts, working (K1, P1) into each double yo. K**1 (3)**.

2nd row: K**1 (3)**. Pat across 48 sts. K1.

Cont in pat as established, having garter edges at each end of row until work from marked row measures 10" [25.5 cm], ending on a WS row. **Do not** break yarn.

Join front and back for second Sleeve as follows:

1st row: (RS). K**1 (3)**. Pat across 48 sts. K1. Cast on **0 (2)** sts. *Working across sts from st holder:* K1. Pat across 48 sts. K**1 (3)**. **100 (106)** sts. PM for second Sleeve at each end of row.

Second Sleeve: Cont in Sunray Pat as established, having garter edges at each end of row until work from 2nd set of markers measures same length as for first sleeve from markers to beg of Cuff, ending on a WS row.

Change to smaller needles and proceed as follows:

Second Sleeve Cuff: Next row: (RS). *K**7 (8)**. K2tog. Rep from * 9 times more. Knit to end of row. **90 (106)** sts.

Knit 6 rows.

Cast off knitwise (WS). Remove markers.

FINISHING

Fold work in half lengthwise with WS tog. Place markers **18 (16)" [45.5 (40.5) cm]** in from each end. Using Flat seam, sew sleeve seams from cuff to markers.

