



KNIT | SKILL LEVEL: **INTERMEDIATE**

ABBREVIATIONS

Alt = Alternate(ing)

Approx = Approximately

K = Knit

K1tbl = Knit next stitch through back loop

K2tog = Knit next 2 stitches together

P2sso = Pass 2 slipped stitches over

PM = Place marker

Rep = Repeat

RS = Right side

S12K = Slip next 2 stitches together knitwise

SM = Slip marker

Ssk = Slip next 2 stitches one at a time. Pass them back onto left-hand needle, then knit through the back loops together.

St(s) = Stitch(es)

WS = Wrong side

Yo = Yarn over

MEASUREMENTS

Approx 54" [137 cm] wide x 25" [63.5 cm] deep.

GAUGE

22 sts and 30 rows = 4" [10 cm] in stocking st.

INSTRUCTIONS

Garner Tab Cast On

Cast on 3 sts. **Do not** join. Working back and forth across needle in rows, proceed as follows:

Knit 6 rows (garter st).

Next row: K3. Pick up and knit 3 sts along length of 6 rows just

worked. Pick up and knit 3 sts along cast on edge of work. 9 sts.

Body

1st row: (RS). K3. (yo. K1) 3 times. yo. K3. 13 sts.

2nd row: K3. Purl to last 3 sts. K3.

3rd row: K3. yo. K3. yo. PM. K1. yo. K3. yo. K3. 17 sts

4th row: As 2nd row.

5th row: K3. yo. Knit to marker. yo. SM. K1. yo. Knit to last 3 sts. yo. K3. 21 sts.

6th row: K3. Purl to last 3 sts. K3. Rep last 2 rows until there are 261 sts, ending on a WS row.

MATERIALS

Red Heart® Roll With It Sparkle™ (5.29 oz/150 g; 561 yds/513 m) Amethyst (7001) **2 balls**

Size U.S. 6 (4mm) circular knitting needle 29" [73.5 cm] long **or size needed to obtain gauge.** 3 stitch markers. Tapestry needle.

Lace Border (See chart on page 4).

1st row: K3. yo. K1. *(K2tog. yo. K1tbl. K1. K2tog. yo. K1tbl. yo. ssk. K1. K1tbl. yo. ssk. K1.* Rep from * to * to marker. yo. SM. K1. yo. K1. Rep from * to * to last 3 sts. yo. K3. 265 sts.

2nd and alt rows: K3. Purl to last 3 sts. K3.

3rd row: K3. yo. K2. *(K2tog. yo. K1) twice. K1tbl. (K1. yo. ssk) twice. K1.* Rep from * to * to 1 st before marker. K1. yo. SM. K1. yo. K2.* Rep from * to * to last 4 sts. K1. yo. K3. 269 sts.

5th row: K3. yo. K2. K2tog. *yo. K1tbl. K2tog. yo. K1tbl. K3. K1tbl. yo. ssk. K1tbl. yo. Sl2k. K1. P2sso.* Rep from * to * 15 sts before marker. yo. K1tbl. K2tog. yo. K1tbl. K3. K1tbl. yo. ssk. K1tbl. yo. ssk. K2. yo. SM. K1. yo. K2. K2tog. Rep from * to * to last 18 sts. yo. K1tbl. K2tog. yo. K1tbl. K3. K1tbl. yo. ssk. K1tbl. yo. ssk. K2. yo. K3. 273 sts.

7th row: K3. yo. K2. K1tbl. K1. *(K1tbl. K2tog. yo) twice. (K1tbl. yo. ssk) twice. K1tbl. K1.* Rep from * to * 3 sts before marker. K1tbl. K2. yo. SM. K1. yo. K2. K1tbl. K1. Rep from * to * to last 6 sts. K1tbl. K2. yo. K3. 277 sts.

9th row: K3. yo. K1. K1tbl. yo. ssk.

K1. *(K2tog. yo. K1tbl) twice. K1. (K1tbl. yo. ssk) twice. K1.* Rep from * to * 4 sts before marker. K2tog. yo. K1tbl. K1. yo. SM. K1. yo. K1. K1tbl. yo. ssk. K1. Rep from * to * to last 7 sts. K2tog. yo. K1tbl. K1. yo. K3. 281 sts.

11th row: K3. yo. K3. K1tbl. yo. K2tog. *yo. K1tbl. K2. yo. ssk. K1. K2tog. yo. K2. K1tbl. yo. Sl2K. K1. P2sso.* Rep from * to * to 4 sts before marker. yo. K1tbl. K3. yo. SM. K1. yo. K3. K1tbl. yo. K2tog. Rep from * to * to last 7 sts. yo. K1tbl. K3. yo. K3. 285 sts.

13th row: K3. yo. K2tog. yo. K1. K2tog. yo. K1tbl. K1. *K1tbl. yo. ssk. K1. yo. ssk. K1. K2tog. yo. K1. K2tog. yo. K1tbl. K1.* Rep from * to * to 6 sts before marker. K1tbl. yo. ssk. K1. yo. ssk. yo. SM. K1. yo. K2tog. yo. K1. K2tog. yo. K1tbl. K1. Rep from * to * to last 9 sts. K1tbl. yo. ssk. K1. yo. ssk. yo. K3. 289 sts.

15th row: K3. yo. K2tog. yo. K1tbl. K2. yo. ssk. K1. *K2tog. yo. K2. K1tbl. yo. Sl2K. K1. P2sso. yo. K1tbl. K2. yo. ssk. K1.* Rep from * to * to 7 sts before marker. K2tog. yo. K2. K1tbl. yo. ssk. yo. SM. K1. yo. K2tog. yo. K1tbl. K2. yo. ssk. K1. Rep from * to * to last 10 sts. K2tog. yo. K2. K1tbl. yo. ssk. yo. K3. 293 sts.

17th row: K3. yo. K1. K1tbl. (K1. yo. ssk) twice. K1. *(K2tog. yo. K1) twice. K1tbl. (K1. yo. ssk) twice. K1.* Rep from * to * to 8 sts before marker. (K2tog. yo. K1) twice. K1tbl. K1. yo. SM. K1. yo. K1. K1tbl. (K1. yo. ssk) twice. K1. Rep from * to * to last 17 sts. (K2tog. yo. K1) twice. K1tbl. K1. yo. K3. 297 sts.

19th row: K3. yo. K4. K1tbl. yo. ssk. K1tbl. yo. Sl2K. K1. P2sso. *yo. K1tbl. K2tog. yo. K1tbl. K3. K1tbl. yo. ssk. K1tbl. yo. Sl2k. K1. P2sso.* Rep from * to * to 8 sts before marker. yo. K1tbl. K2tog. yo. K1tbl. K4. yo. SM. K1. yo. K4. K1tbl. yo. ssk. K1tbl. yo. Sl2K. K1. P2sso. Rep from * to * to last 11 sts. yo. K1tbl. K2tog. yo. K1tbl. K4. yo. K3. 301 sts.

21st row: K3. yo. K1tbl. K2tog. yo. K1tbl. yo. ssk. K1tbl. yo. ssk. K1tbl. K1. *(K1tbl. K2tog. yo) twice. K1tbl. (yo. ssk. K1tbl) twice. K1.* Rep from * to * to 10 sts before marker. (K1tbl. K2tog. yo) twice. K1tbl. yo. ssk. K1tbl. yo. SM. K1. yo. K1tbl. K2tog. yo. K1tbl. (yo. ssk. K1tbl) twice. K1. Rep from * to * to last 13 sts. (K1tbl. K2tog. yo) twice. K1tbl. yo. ssk. K1tbl. yo. K3.

23rd row: K3. yo. K1tbl. K2tog. yo. K1tbl. K1. (K1tbl. yo. ssk) twice. K1. *(K2tog. yo. K1tbl) twice. K1. (K1tbl.

yo. ssk) twice. K1.* Rep from * to * to 11 sts before marker. (K2tog. yo. K1tbl) twice. K1. K1tbl. yo. ssk. K1. yo. SM. K1. yo. K1tbl. K2tog. yo. K1tbl. K1. (K1tbl. yo. ssk) twice. K1. Rep from * to * to last 14 sts. (K2tog. yo. K1tbl) twice. K1. K1tbl. yo. ssk. K1. yo. K3. 305 sts.

25th row: K3. *yo. K1tbl. K2. yo. ssk. K1. K2tog. yo. K2. K1tbl. yo. Sl2K. K1. P2sso.* Rep from * to * to marker, ending final rep with ssk. yo. SM. K1. Rep from * to * to last 3 sts, ending final rep with ssk. yo. K3. 309 sts.

27th row: K3. yo. *K1tbl. yo. ssk. K1. yo. ssk. K1. K2tog. yo. K1. K2tog. yo. K1tbl. K1.* Rep from * to * to marker, omitting last K1 from final rep. yo. SM. K1. yo. Rep from * to * to last 3 sts, omitting last K1 from final rep. yo. K3. 313 sts.

29th row: K3. yo. K1. *K2tog. yo. K2. K1tbl. yo. Sl2K. K1. P2sso. yo. K1tbl. K2. yo. ssk. K1.* Rep from * to * marker. yo. SM. K1. yo. K1. Rep from * to * to last 3 sts. yo. K3. 317 sts.

30th row: K3. Purl to last 3 sts. K3.

Rep 1st to 30th rows once more. 377 sts.

Final Border

1st row: K3. yo. K8. yo. K1tbl. yo.
K13. yo. K1tbl. yo. Rep from * to
* to 8 sts before marker. K8. yo. SM.
K1. yo. K8. yo. K1tbl. yo. Rep from *
to * to last 11 sts. K8. yo. K3,

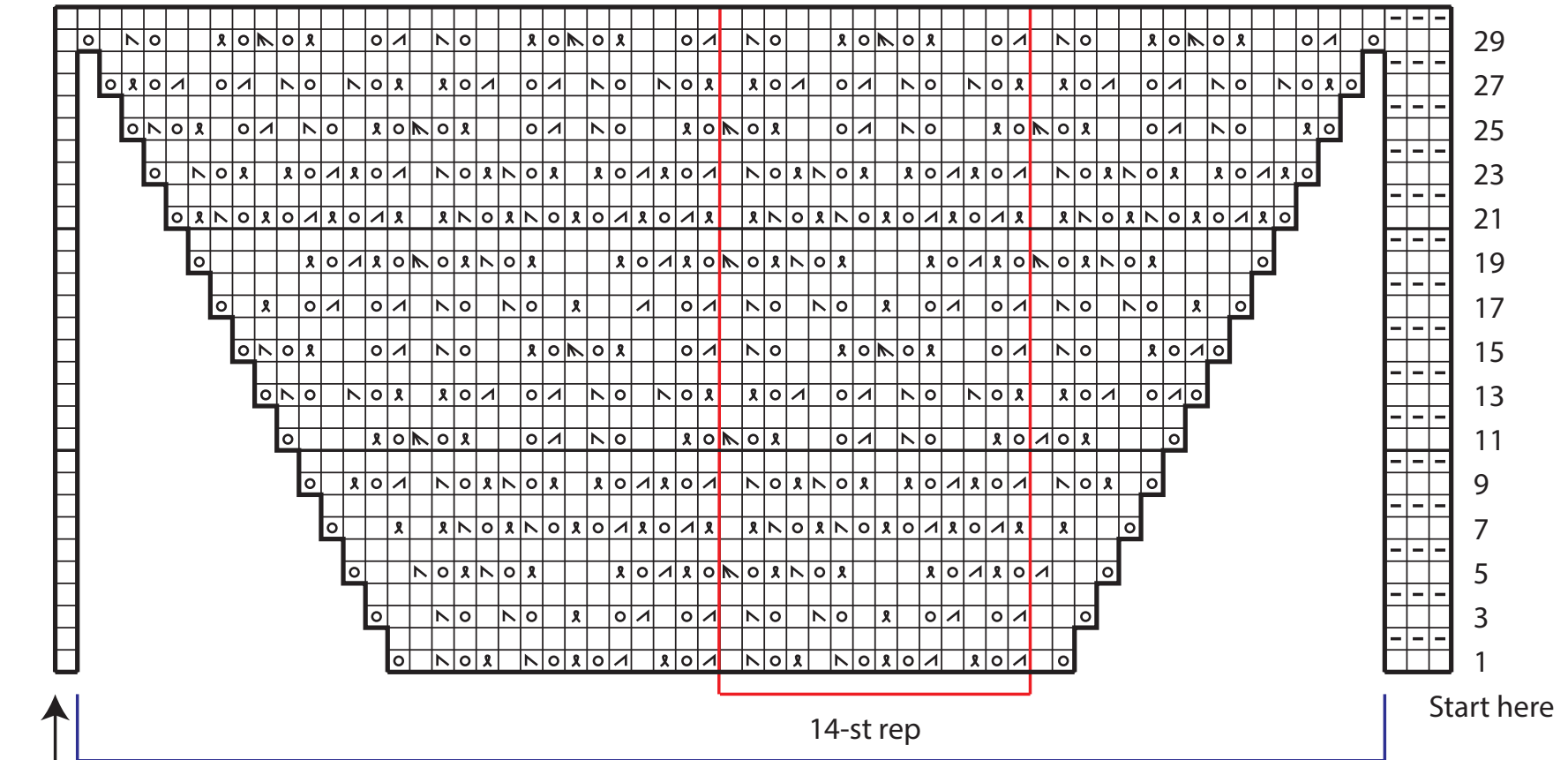
2nd and alt rows: K3. Purl to last
3 sts. K3.

3rd row: K3. yo. K10. yo. K1tbl. yo.
K15. Yo. K1tbl. yo. Rep from * to
* to 10 sts before marker. K10. yo.
SM. K1. yo. K10. yo. K1tbl. yo. Rep
from * to * to last 13 sts. K10. yo. K3.

5th row: K3. yo. K12. yo. K1tbl. yo.
K17. yo. K1tbl. yo. Rep from * to
* to 12 sts before marker K12. yo.
SM. K1. yo. K12. yo. K1tbl. yo. Rep
from * to * to last 15 sts. K12. yo. K3.

Knit 3 rows (garter st).
Cast off loosely.





Note that this section is repeated once more after center st is worked.

Key

- | | |
|-----------------------------|----------------------|
| ☐ = Knit on RS. Purl on WS. | ☒ = ssk |
| ☐ = Purl on RS. Knit on WS. | ☑ = K2tog |
| ☐ = yo | ☒ = Sl2K. K1. P2sso. |
| ☐ = K1tbl | |