



KNIT | SKILL LEVEL: INTERMEDIATE

ABBREVIATIONS

Approx = Approximately

Beg = Beginning

Cont = Continue(ity)

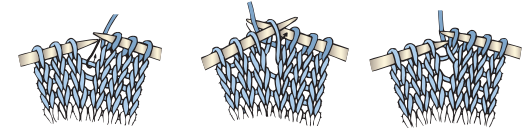
C6B = Slip next 3 stitches onto cable needle and leave at back of work. K3, then K3 from cable needle

C6F = Slip next 3 stitches onto cable needle and leave at front of work. K3, then K3 from cable needle

K = Knit

K2tog = Knit next 2 stitches together

M1 = Make 1 stitch by picking up horizontal loop lying before next stitch and knitting into back of loop



Pat = Pattern

P = Purl

Rep = Repeat

RS = Right side

St(s) = Stitch(es)

WS = Wrong side

MEASUREMENTS

Approx 18" x 64" [45.5 x 162.5 cm], excluding fringe.

GAUGE

16 sts and 22 rows = 4" [10 cm] in stocking st.

INSTRUCTIONS

Cast on 80 sts.

Knit 6 rows (garter st), noting first row is WS.

Increase row: (WS). K5. (M1. K10) 7 times. M1. K5. 88 sts. See chart on page 2.

1st row: (RS). K5. P3. C6B. C6F. P3. *C6F. C6B. P3. C6B. C6F. P3. Rep from * to last 5 sts. K5.

2nd rows: K8. *P12. K3. Rep from * to last 5 sts. K5.

3rd row: K5. P3. *K12. P3. Rep from * to last 5 sts. K5.

4th rows: As 2nd row.

MATERIALS

Red Heart® Roll With It Tweed™ (5.29 oz/150 g; 296 yds/271 m)
Sunset (9234) **3 balls**

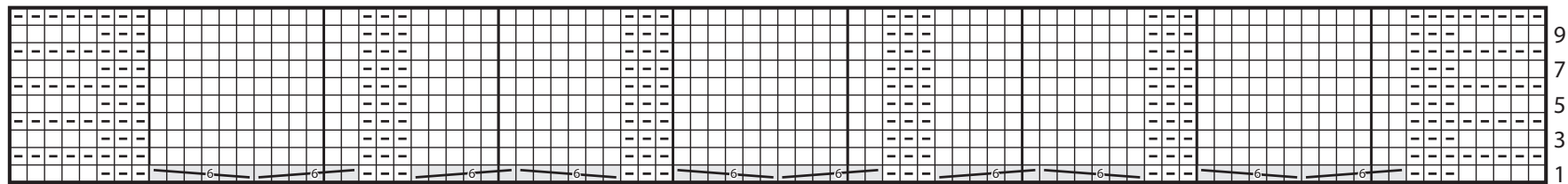
Size U.S. 8 (5 mm) knitting needles **or size needed to obtain gauge.**
Cable needle.

RED HEART™ KNIT CABLED WRAP

5th to 10th rows: Rep 3rd and 4th rows 3 times.
These 10 rows form Cable Pat.

Cont in Cable Pat until work from beg measures approx 64" [162.5 cm], ending on a 10th row of pat.

Decrease row: (RS). K5. (K2tog, K9) 7 times. K2tog. K4. 80 sts.
Knit 6 rows (garter st).
Cast off knitwise.



Start Here

Key

☐ = Knit on RS rows; Purl on WS rows

◻ = Purl on RS rows; Knit on WS rows

 = C6B

 = C6F