



KNIT | SKILL LEVEL: **INTERMEDIATE**

ABBREVIATIONS

Approx = Approximately

Ch = Chain(s)

K = Knit

K2tog = Knit next 2 stitches together.

Sl1P = Slip next stitch purlwise

Ssk = Slip next 2 stitches knitwise one at a time. Pass them back onto left-hand needle, then knit through back loops together.

St(s) = Stitch(es)

Tog = Together

Yo = Yarn over

MEASUREMENTS

Approx 15" [38 cm] wide x 83" [210 cm] long.

GAUGE

17 sts and 23 rows = 4" [10 cm] in stocking st

INSTRUCTIONS

Notes: Borders are worked in Garter st, slipping first st of each row for a smooth edge.

Cast on 55 sts.

(See Chart on page 2)

Border

Rows 1-20: Sl1P, knit across.

Begin Lace Pattern

Set-up Row: K10 for border, place marker, p35, place marker, k10 for border.

Row 1 (Right Side): Sl1P, k9, slip marker, k6, *yo, ssk, k9; repeat from * to last 7 sts before marker, yo, ssk, K5, slip marker, k10.

Row 2 and all Wrong Side Rows: Sl1P, k9, slip marker, p35, slip marker, k10.

Row 3: Sl1P, k9, slip marker, k7, *yo, ssk, k9; repeat from * to last 6 sts before marker, yo, ssk, k4, slip marker, k10.

Row 5: Sl1P, k9, slip marker, k3, *k2tog, yo, k3, yo, ssk, k4; repeat from * to last 10 sts before marker, k2tog, yo, k3, yo, ssk, k3, slip marker, k10.

MATERIALS

Red Heart® Super Saver Ombré™ (10 oz /283 g; 482 yds/440 m)
True Blue (3962) **2 balls**

Size U.S. 8 (5 mm) knitting needles **or size needed to obtain gauge.**
Stitch markers.

Row 7: Sl1P, k9, slip marker, *k2, k2tog, yo, k5, yo, ssk; repeat from * to last 2 sts before marker, k2, slip marker, k10.

Row 9: Sl1P, k9, slip marker, k1, *k2tog, yo, k9; repeat from * to last st before marker, k1, slip marker, k10.

Row 11: Sl1P, k9, slip marker, *k2tog, yo, k9; repeat from * to last 2 sts before marker, k2, slip marker, k10.

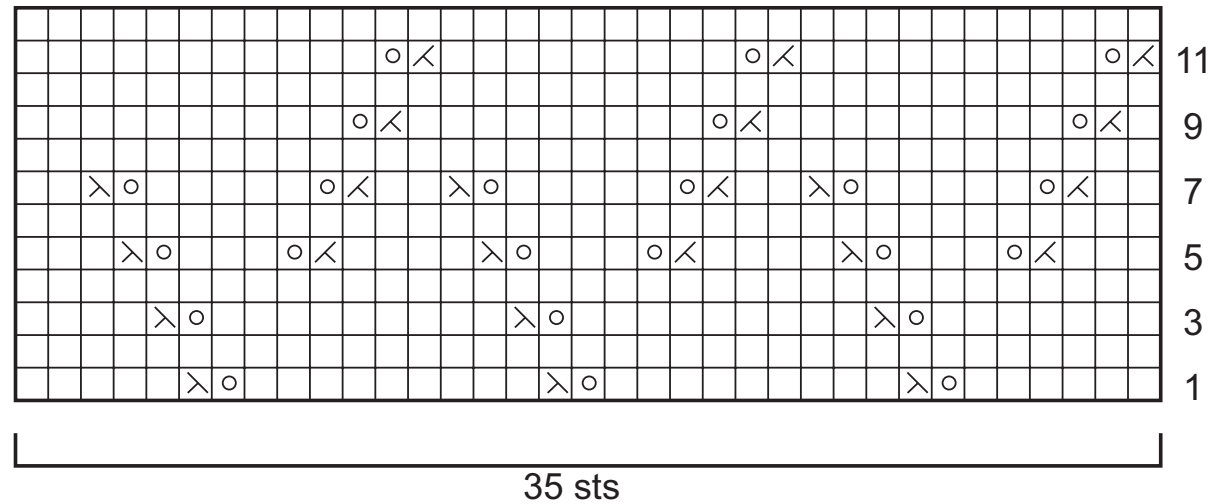
Row 12: Repeat Row 2.
Repeat Rows 1-12 for 33 times.

Border

Rows 1-20: Sl1P, knit across.
Bind off.

FINISHING

Weave in ends.



Stitch Key

- = K on RS, p on WS
- = K2tog
- = Ssk
- = Yarn over (yo)