



KNIT
SKILL LEVEL
EASY

Designed by Lisa Gentry

What you will need:

RED HEART® It's a Wrap™:
1 ball 9255 Comedy

Susan Bates® Knitting
Needles: 2.75mm [US 2]

Yarn needle

GAUGE: 25 sts = 4" [10 cm]; 46 rows = 4" [10 cm] in Stockinette stitch (knit on right side, purl on wrong side). **CHECK YOUR GAUGE.** Use any size needles to obtain the gauge.



RED HEART® It's a Wrap™, Art E864 available 7 oz (200 gm), 1,100 yd (1,006 m) balls



Asymmetrical Knit Shawl

Wrap yourself in the exciting colors and comfort of this beautiful drapey yarn. Start your knitting at one point and enjoy how the colors change automatically as you work towards the short side of the shawl.

Shawl measures about 96" [244 cm] across increase edge, 61" [155 cm] across decrease edge, and 42" [106.5 cm] across bind-off edge.

Special Stitches

kfb (Knit into front and back) = Knit next stitch but do not remove from needle, knit into back loop of same stitch and remove from needle – 1 st increased.

s2kp (slip 2, knit, pass 2 slipped stitches over) = Slip 2 stitches as if to k2tog, k1, pass the 2 slipped stitches over the knit stitch and off the needle – 2 sts decreased.

PATTERN STITCH

Lace Pattern (begins over a multiple of 8 sts + 6 additional sts)

Row 1 (right side): Kfb, knit to last 2 sts, k2tog.

Row 2: K4, purl to last 3 sts, k2, kfb—1 st increased.

Row 3: Kfb, k3, *yo, s2kp, yo, k5; repeat from * to last 3 sts, k1, k2tog.

Row 4: K4, purl to last 3 sts, k2, kfb—1 st increased.

Row 5: Kfb, knit to last 2 sts, k2tog.

Rows 6 and 7: Repeat Rows 4 and 5—1 st increased.

Row 8: Repeat Row 4—1 st increased.

Row 9: Kfb, k5, *yo, s2kp, yo, k5; repeat from * to last 4 sts, k2, k2tog.

Rows 10--14: Repeat Rows 4-8—3 sts increased.

Row 15: Kfb, k7, *yo, s2kp, yo, k5; repeat from * to last 5 sts, k3, k2tog.

Row 16: Repeat Row 4—1 st increased.

Notes

1. Shawl is worked back and forth in rows from one point across to short straight edge.
2. An increase is worked at the beginning and a decrease at the end of every right side row. An increase is worked at the end of every wrong side row. The stitch count remains the same when a right side row is worked. The stitch count increases by 1 when a wrong side row is worked.
3. The Lace pattern can be worked by following the written instructions or reading the chart. Read right side rows of chart from right to left and wrong side rows from left to right.

SHAWL

Cast on 5 sts.

Garner Stitch Section

Row 1 (right side): Kfb, knit to last 2 sts, k2tog.

Row 2: Knit to last st, kfb—6 sts.

Rows 3-52: Repeat last 2 rows 25 more times—31 sts.

Stockinette Stitch Section

Row 53 (right side): Kfb, knit to last 2 sts, k2tog.

Row 54: K4, purl to last 3 sts, k2, kfb—32 sts.

Rows 55-92: Repeat last 2 rows 19 times—51 sts.

Garner Stitch Section

Rows 93-130: Repeat Rows 1 and 2 for 19 more times—70 sts.

continued...



2015 - 2017
WOMEN'S CHOICE AWARD®
AMERICA'S MOST RECOMMENDED
YARN BRAND

SHOP KIT

Lace Section

Rows 131–146: Work Rows 1–16 of Lace Pattern—78 sts.

Rows 147–166: Repeat Rows 1 and 2 for 10 more times—88 sts.

Rows 167–174: Repeat Rows 53 and 54 for 4 more times—92 sts.

Rows 175–186: Repeat Rows 1 and 2 for 6 more times—98 sts.

Rows 187–192: Repeat Rows 53 and 54 for 3 more times—101 sts.

Rows 193–226: Repeat Rows 1 and 2 for 17 more times—118 sts.

Rows 227–322: Repeat Rows 131–226—166 sts.

Rows 323–418: Repeat Rows 131–226—214 sts.

Rows 419–454: Repeat Rows 131–166—232 sts.

Rows 455–460: Repeat Rows 53 and 54 for 3 more times—235 sts.

Rows 461–466: Repeat 1 and 2 for 3 more times—238 sts.

Rows 467–482: Repeat Rows 131–146—246 sts.

Rows 483–488: Repeat Rows 1 and 2 for 3 more times—249 sts.

Rows 489–492: Repeat Rows 53 and 54 for 2 more times—251 sts.

Rows 493–520: Repeat Rows 461–488—265 sts.

Bind off.

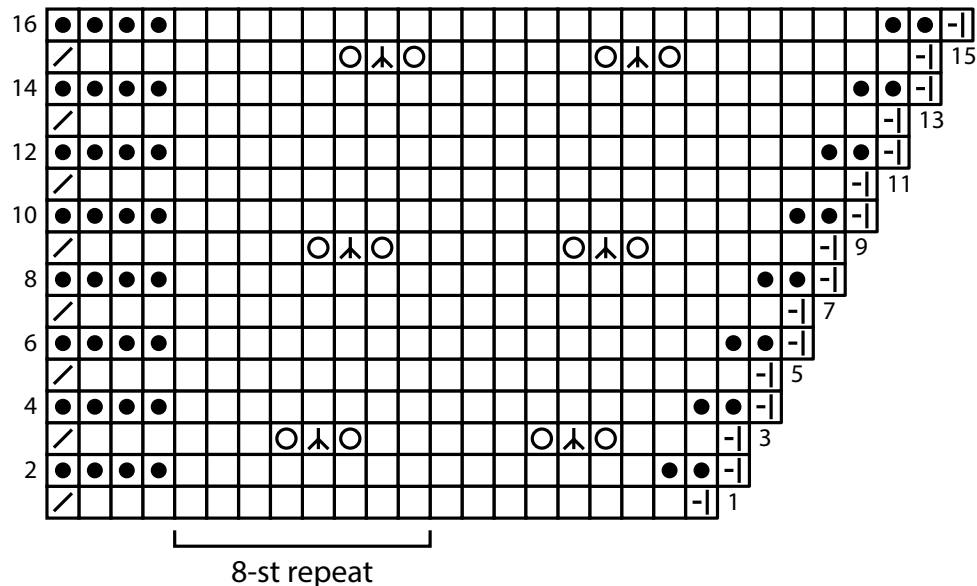
FINISHING

Weave in ends.

ABBREVIATIONS

k = knit; **k2tog** = knit next 2 sts together; **st(s)** = stitch(es); **yo** = yarn over; * = repeat whatever follows the * as indicated.

Lace Pattern



Key

- knit on right side, purl on wrong side
- purl on right side, knit on wrong side
- yarn over
- k2tog (knit 2 stitches together)
- s2kp (slip 2, k1, psso)
- kfb