



stitch Nation

BY DEBBIE STOLLER™



prairie wrap

In the fall wrap it around your neck as a scarf, then in the summer wrap it around your shoulders as a shawl. This gorgeous lace pattern is suited to any yarn color and won't take forever to knit since it is worsted weight yarn.

5NO142



Designed by Cynthia Yanok.

Shawl measures 49" wide x 12" long.

Stitch Nation by Debbie Stoller™ "Washable Ewe™":
2 balls 3365 Earth.

Knitting Needles: 5mm [US 8].
Circular Knitting Needles: 5mm [US 8] - 24".
Yarn needle.

GAUGE: one repeat of 16 sts = 4"; 32 rows = 5" in pattern. **CHECK YOUR GAUGE.** Use any size needles to obtain the gauge.

SPECIAL ABBREVIATIONS

ssk (slip, slip, knit): slip next 2 sts knitwise, one at a time, to right needle; insert point of left needle into the fronts of these 2 sts and knit them together from this position.

S2KP: Sl next 2 sts together knitwise to right needle, k1, pass the 2 slipped sts over the knit 1 – decrease made.

Cable cast on: Insert right needle between first 2 sts, yarn round needle as if to knit, pull loop through, twist the loop to the right and place on left needle from under the st made.

SPECIAL STITCHES

Diamond Lace Pattern (multiple of 16 sts)

Row 1 (Wrong Side) and all Wrong Side rows: Purl.

Row 2 (Right Side): K4, yo, ssk, k3, k2tog, yo, k5.

Row 4: Yo, ssk, k3, yo, ssk, k1, k2tog, yo, k3, k2tog, yo, k1.

Row 6: K1, yo, ssk, k3, yo, S2KP, yo, k3, k2tog, yo, k2.

Row 8: K2, yo, ssk, k7, k2tog, yo, k3.

Row 10: K1, k2tog, yo, k9, yo, ssk, k2.

Row 12: K2tog, yo, k3, k2tog, yo, k1, yo, ssk, k3, yo, ssk, k1.

Row 14: Yo, k3, k2tog, yo, k3, yo, ssk, k3, yo, S2KP.

Row 16: K3, k2tog, yo, k5, yo, ssk, k4.

Repeat Rows 1-16 for Pattern.

SHAWL

With knitting needles, cast on 3 sts. (Change to circular needle as required.)

Row 1 (Wrong Side): P3.

Row 2: Using cable cast on method now and at beginning of every row, cast on 3 sts, k6 – 6 sts.

Row 3: Cast on 3 sts, p9 – 9 sts.

Row 4: Cast on 3 sts, k4, yo, ssk, k3, k2tog, yo, k1 – 12 sts.

Row 5 (and all WS rows): Cast on 3 sts, purl to end.

Row 6: Cast on 3 sts, k3, yo, ssk, k3, yo, ssk, k1, k2tog, yo, k5 – 18 sts.

Row 8: Cast on 3 sts, k6, work Row 6 of Pattern, k2 – 24 sts.

Row 10: Cast on 3 sts, k4, k2tog, yo, k3, work Row 8 of Pattern, k2, yo, ssk, k1 – 30 sts.

Row 12: Cast on 3 sts, k8, yo, ssk, k2, work Row 10 of Pattern, k1, k2tog, yo, k5 – 36 sts.

Row 14: Cast on 3 sts, k4, k2tog, yo, k1, yo, ssk, k3, yo, ssk, k1,

For more ideas & inspiration -

www.redheart.com

www.stitchnationyarn.com

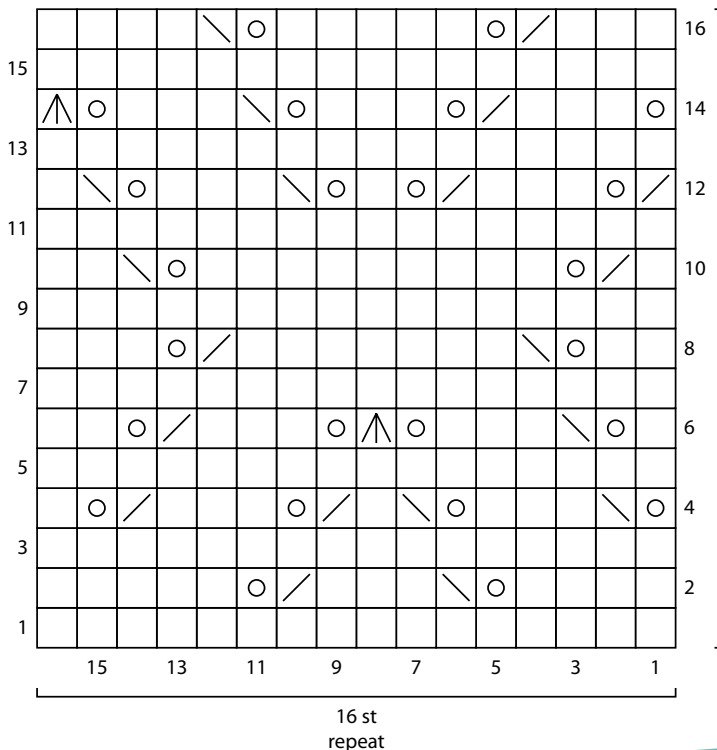
www.coatsandclark.com



stitch Nation

BY DEBBIE STOLLER™

work Row 12 Pattern, k2tog, yo, k3, k2tog, yo, k1, yo, ssk, k1 – 42 sts.
Row 16: Cast on 3 sts, k6, k2tog, yo, k3, yo, ssk, k3, yo, S2KP, work Row 14 of Pattern, yo, k3, k2tog, yo, k3, yo, ssk, k3 – 48 sts.
Row 18: Cast on 3 sts, k5, [work Row 16 of Pattern] 3 times, k1 – 54 sts.
Row 20: Cast on 3 sts, k8, [work Row 2 of Pattern] 3 times, k4 – 60 sts.
Row 22: Cast on 3 sts, k3, k2tog, yo, k3, k2tog, yo, k1, [work Row 4 of Pattern] 3 times, yo, ssk, k3, yo, ssk – 66 sts.
Row 24: Cast on 3 sts, k4, yo, S2KP, yo, k3, k2tog, yo, k2, [work Row 6 of Pattern] 3 times, k1, yo, ssk, k3, yo, S2KP, yo, k1 – 72 sts.
Row 26: Cast on 3 sts, k3, yo, ssk, k7, k2tog, yo, k3, [work Row 8 of Pattern] 3 times, k2, yo, ssk, k9 – 78 sts.
Row 28: Cast on 3 sts, k4, [work Row 10 of Pattern] 5 times – 84 sts.
Row 30: Cast on 3 sts, k4, yo, ssk, k1, [work Row 12 of Pattern] 5 times, k2tog, yo, k1 – 90 sts.
Row 32: Cast on 3 sts, k3, yo, ssk, k3, yo, S2KP, [work Row 14 of Pattern] 5 times, yo, k5 – 96 sts.
Row 34: Cast on 3 sts, k7, yo, ssk, k4, [work Row 16 of Pattern] 5 times, k3, k2tog, yo, k4 – 102 sts.
Row 36: Cast on 3 sts, [work Row 2 of Pattern] 6 times, k4, yo, ssk, k3, k2tog, yo, k1 – 108 sts.
Row 38: Cast on 3 sts, k3, [work Row 4 of Pattern] 6 times, yo, ssk, k3, yo, ssk, k1, k2tog, yo, k5 – 114 sts.
Rows 40-65: Repeat Rows 8-33, adding 3 sts every row, EXCEPT work Pattern 7 times through Row 48, 9 times through Row 58, and 11 times through Row 64 – 195 sts at end of Row 65. Bind off.



Crochet Shell Edging (shown)

With right side facing and crochet hook, join yarn at left top corner; ch 1, sc in same st as joining, * skip 2 sts, 5 dc in next st, skip 2 sts, sc in next st; repeat from * around, adjusting at corners as necessary; join with a slip st in first sc. Fasten off. Weave in ends.

Garter Loop Knit Edging (optional)

Cast on 4 sts.

Row 1 (Right Side): Slip 1, k3.

Row 2: Slip 1, K3.

Row 3: Cast on 7 sts, bind off 7 sts, k4.

Rows 4-8: Slip 1, k3.

Row 9: With right-hand needle, pick up 2 strands of last cast-on st, knit first st on left-hand needle then slip strands over this st, knit to end – 4 sts.

Row 10: Slip 1, k3.

Repeat Rows 1-10 until edging, slightly stretched, is long enough to fit around shawl, ending with Row 10. Join to Row 1 of first slip st and fasten off. Sew edging to shawl.



Stitch Nation by Debbie Stoller™

"Washable Ewe™" Art. T103 available in 3.5oz (100g), 183yd (167m) balls.

ABBREVIATIONS: ch = chain; dc = double crochet; K = knit; mm = millimeters; P = purl; pssso = pass the slipped st over; sc = single crochet; st(s) = stitch(es); tog = together; yo = yarn over; * = repeat whatever follows the * as indicated; [] = work directions in brackets the number of times specified.

□ k on RS, p on WS

▣ yarn over

▤ k2tog

▥ ssk: sl, sl, knit

▧ s2kp: sl 2 as if to k2tog, k1, pass the 2 slipped sts over

16 row repeat

For more ideas & inspiration -

www.redheart.com

www.stitchnationyarn.com

www.coatsandclark.com