



Marly Bird  
from Marly Bird



KNIT | SKILL LEVEL: **INTERMEDIATE**

### ABBREVIATIONS

**Approx** = Approximately

**Cont** = Continuity

**K** = Knit

**K2tog** = Knit next 2 stitches together

**Pat** = Pattern

**P2tog** = Purl next 2 stitches together

**P2sso** = Pass 2 slipped stitches over

**Rep** = Repeat

**RS** = Right side

**Sl2k** = Slip next 2 stitches knitwise

**St(s)** = Stitch(es)

**WS** = Wrong side

**Yo** = Yarn over

### MEASUREMENTS

Approx 8" x 76" [20.5 x 193 cm]

### GAUGE

19 sts and 20 rows = 4" [10 cm] in Lace Pat after blocking.

### INSTRUCTIONS

#### Stripe Pat

With A, work 13 rows.

With B, work 18 rows.

With C, work 18 rows.

\*\*With A, work 18 rows.

With B, work 18 rows.

With C, work 18 rows.\*\*

Rep from \*\* to \*\* 5 times more.

With A, work 10 rows.

These 386 rows form Stripe Pat.

### MATERIALS

**Red Heart® Chic Sheep by Marly Bird™** (3.5 oz/100 g; 186 yds/170 m)

**Contrast A** Platinum (5640) **1 ball**

**Contrast B** Lace (5311) **1 ball**

**Contrast C** Sterling (5641) **1 ball**

Size U.S. 9 (5.5 mm) knitting needles **or size needed to obtain gauge.**

## First Border

With A, cast on 39 sts.

Knit 3 rows (garter st), noting that first row is WS.

Proceed as follows:

**1st row:** (RS). Knit.

**2nd row:** K4. Purl to last 4 sts. K4.

**3rd row:** Knit.

**4th row:** K4. \*yo. P2tog. Rep from \* to last 4 sts. K4.

**5th to 7th rows:** As 1st to 3rd rows.

**8th to 10th rows:** Knit.

First 13 rows of Stripe Pat are now complete.

## Body

Break A. Join B. Keeping cont of Stripe Pat, begin working Lace Pat as follows:

**1st row:** (RS). K5. \*yo. K3. Sl2k. K1. p2sso. K3. yo. K1. Rep from \* to last 4 sts. K4.

**2nd row:** K4. Purl to last 4 sts. K4.

**3rd row:** K5. \*K1. yo. K2. Sl2k. K1. p2sso. K2. yo. K2. Rep from \* to last 4 sts. K4.

**4th row:** As 2nd row.

**5th row:** K5. \*K2. yo. K1. Sl2k. K1. p2sso. K1. yo. K3. Rep from \* to last 4 sts. K4.

**6th row:** As 2nd row.

**7th row:** K5. \*K3. yo. Sl2k. K1. p2sso. yo. K4. Rep from \* to last 4 sts. K4.

**8th row:** As 2nd row.

**9th to 15th rows:** As 1st to 7th rows.

**16th to 18th rows:** Knit.

These 18 rows form Lace Pat. Rep Lace Pat 19 times more, keeping cont of Stripe Pat.

## Second Border

Break C. Join A.

Proceed as follows:

**1st row:** (RS). Knit.

**2nd row:** K4. Purl to last 4 sts. K4.

**3rd row:** Knit.

**4th row:** K4. P1. \*yo. P2tog. Rep from \* to last 4 sts,

**5th to 7th rows:** As 1st to 3rd rows.

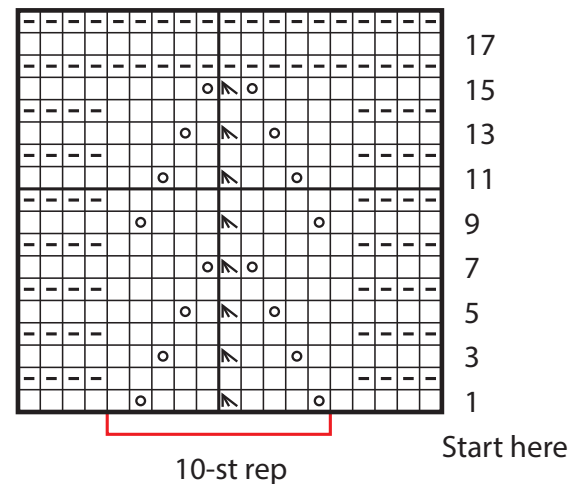
**8th to 10th rows:** Knit.

Cast off knitwise.

## FINISHING

Pin Scarf to measurements. Cover with a damp cloth, leaving cloth to dry.

Lace Pat



### Key

- = Knit on RS rows. Purl on WS rows.
- ◻ = Purl on RS rows. Knit on WS rows.
- ▣ = Sl2k. K1. p2sso.
- ⊙ = yo