



Comfy Hooded Scarf

*Be ready for the windy cold weather.
This hooded scarf features a lovely knit lace
pattern that zigzags down its length.*

Designed by Jodi Snyder.

Scarf measures: 60" x 7".

RED HEART® "Soft Yarn": 2 balls 9275 Paprika.

Circular Knitting Needles: 5mm [US 8] 32" long.
Stitch markers (2), yarn needle.

GAUGE: 16 sts = 4"; 24 rows = 4" in Seed st. **CHECK YOUR GAUGE. Use any size needles to obtain the gauge given.**

NOTES: Scarf is worked back and forth in rows. Circular needles are used to accommodate large number of stitches.

Special Abbreviations

Ssk = Slip next 2 sts knitwise, one at a time to right needle; insert point of left needle into the fronts of these 2 sts and knit them together from this position.

S2kp2 = Slip 2 sts at once knitwise, k1, pass 2 slipped sts over and off needle (2 sts decreased).

Seed Stitch (worked over an odd number of sts)

Row 1 (Right Side): K1, * p1, k1; repeat from * across.
Repeat Row 1 for Seed st pattern.

Lace Pattern (Multiple of 8 sts + 1)

Row 1(Right Side): K1, * yo, ssk, k3, k2tog, yo, k1; repeat from * across.

Rows 2, 4 and 6: Purl.

Row 3: K1, * k1, yo, ssk, k1, k2tog, yo, k2; repeat from * across.

Row 5: K1, * k2, yo, s2kp2, yo, k3; repeat from * across.

SCARF

Cast on 211 sts.

Begin with a wrong side row, work 11 rows in Seed St. On last row, place markers after first 5 sts and before last 5 sts for side borders.

Seed st and Lace Pattern Sequence

Keeping first and last 5 sts in Seed st throughout, work in Pattern Sequence as follows:

* Rows 1 – 6 of Lace pattern, 10 rows Seed st.

Repeat from * once more until piece measures 7". Bind off all stitches in pattern.

Hood

Fold scarf in half with wrong side facing and mark center point on bound off edge. Place markers 10" from each side of center point. With right side facing, pick up and knit 91 sts evenly between markers. Work 11 rows in Seed St. On last row, place markers after first 5 sts and before last 5 sts.

Seed st and Lace Pattern Sequence

Keeping first and last 5 sts in Seed st throughout, work in Pattern Sequence as follows:

* Rows 1 – 6 of Lace pattern, 10 rows Seed st.



COMFY HOODED SCARF | KNIT

Repeat from * 3 times more. Bind off.

FINISHING

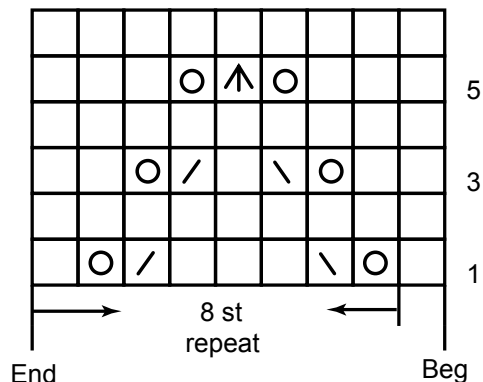
Sew seam at top of hood. Weave in yarn ends.








RED HEART® “Soft Yarn”, Art. E728
available in solid color 5 oz (140 g),
256 yd (234 m) and print 4 oz (113 g),
204 yd (187 m) balls.

ABBREVIATIONS: **K** = knit; **mm** = millimeters; **p** = purl;
st(s) = stitch(es); **tog** = together; **yo** = yarn over;
* or ** = repeat whatever follows the * or ** as indicated.

LACE PATTERN



STITCH KEY

-  K on right side, p on wrong side
-  Yarn over
-  Ssk
-  K2tog
-  S2kp2