



Knit Keyhole Scarf

When you give this scarf you give a message of love— each end has a heart-shape knit right in. The garter stitch area around the neck stretches nicely and keeps out the cold.

Designed by Ann Regis.

Scarf measures: 7" wide X 47" long

RED HEART® "Soft Yarn": 1 ball 4608 Wine.

Knitting Needles: 5.5mm [US 9].
Stitch markers (2), stitch holder, spare knitting needle, yarn needle.

GAUGE: Not vital for this project.

Special Abbreviations

M1 (make one stitch) = Lift running thread before next stitch onto left needle and knit into the back loop.

Ssk = Slip next 2 sts one at a time knitwise to right needle; insert point of left needle into the fronts of these 2 sts and knit them together from this position.

SCARF

First Half

Cast on 13 sts.

Rows 1 (wrong side) and 2: Knit.

Row 3: K6, place marker, p1, place marker, k6.

Row 4 (right side): K6, slip marker, m1, k1, m1, slip marker, k6–15 sts.

Row 5 and all wrong side rows: K6, purl sts between markers, k6.

Rows 6, 8, 10 and 12: K6, slip marker, m1, knit to next marker, m1, slip marker, k6–23 sts, 11 sts between markers.

Row 13: K6, p11, k6.

Rows 14 – 22: K6, work Rows 1 – 9 of chart between markers, k6.

Row 23: Work one wrong side row.

Rows 24 – 28: Repeat Rows 6 – 10–29 sts, 17 sts between markers.

Row 29: K6, p17, k6, re-positioning markers so that center 11 sts are once again between markers.

Rows 30 – 38: K9, work Rows 1 – 9 of chart between markers, k9.

Row 39: Work one wrong side row

Row 40: K8, k2tog, yo, k9, yo, ssk, k8, removing markers.

Row 41: Knit the knit sts and purl the purl sts.

Row 42: K6, k3tog, [k2, m1] 4 times, k3, k3tog tbl, k6.

Row 43: K6, place marker, p17, place marker, k6.

Rows 44 – 48: Repeat Rows 6 – 10–35 sts, 23 sts between markers.

Row 49: K6, p23, k6, removing markers.

Repeat Garter Stripe Sequence and dec as follows:

Rows 1 - 2: Knit.

Row 3: K6, ssk, knit to last 8 sts, k2tog, k6–33 sts.

Row 4: K6, purl to last 6 sts, k6.

Repeat Rows 1 – 4, five times more–23 sts.

Knit 12 rows even in Garter st.

Work Keyhole

Next Row: K12, place remaining 11 sts on holder.

Turn, working on these 12 sts only, continue in Garter st and knit 22 rows, ending in middle of piece. Cut yarn and place sts on holder.



With right side facing, join yarn to 11 sts on holder. Knit even for 22 rows, ending at side edge. Turn, k11 sts, then knit across 12 sts on holder. Turn, knit even for 42 rows. Place stitches on holder.

Second Half

Cast on and work same as for first half of scarf, omitting keyhole. Work even until piece measures same as first half.

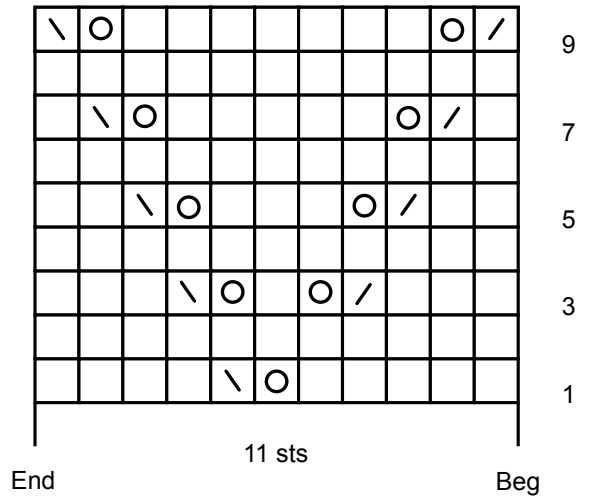
FINISHING

Join with 3-Needle Bind off as follows:
Slip sts from first half onto knitting needle. With wrong sides facing, and points of both needles pointing to the right, use spare needle to * knit the first st from the front needle together with the first st from the back needle. Knit the next st from each needle in the same manner, then bind off 1 st. Repeat from * until all sts have been bound off. Fasten off last st. Weave in yarn ends.







RED HEART® “Soft Yarn”, Art. E728 available in solid color 5 oz (140 g), 256 yd (234 m) and print 4 oz (113 g), 204 yd (187 m) balls.

ABBREVIATIONS: **K** = knit; **mm** = millimeters; **p** = purl; **st(s)** = stitch(es); **tog** = together; **yo** = yarn over; * or ** = repeat whatever follows the * or ** as indicated.



STITCH KEY

-  K on right side, p on wrong side.
-  Yarn over
-  K2tog
-  Ssk