



KNIT  
SKILL LEVEL  
EASY

Designed by Red Heart Design Team

## What you will need:

RED HEART® Boutique Trio™:  
1 ball of 9951 Cactus or 9943  
Aegean

Susan Bates® Knitting Needles:  
5.5 mm [US 9]

Sewing needle and matching  
thread.

GAUGE is not important for this  
pattern.



RED HEART® Boutique  
Trio™, Art. E809  
available in 3.5 oz  
(100 g), 25 yd (22 m)  
balls



# Tri-fecta Scarf

*This unique yarn has three strips joined together on the inside edge. You knit using the edge of one strip and the other two strips become the ruffles.*

Finished Size 3" x 54" (7.5 x 137 cm)

**Yarn Notes:** The scarf's final appearance will differ depending on which color or layer of the yarn is used for knitting.

Stretch one end of the Trio open for several inches and lay it flat. Notice that the Trio yarn is three strips connected together, each made of a mesh of holes. You will be working with one of the colors and leaving the other two loose to form the ruffle. Stretch out the edge of one strip and note that it has rows of holes. Work into the second row of holes. The color that you choose to work with will be on the interior of the scarf.



## SCARF Cast On

Beginning at the edge of your chosen color, insert tip of knitting needle from back to front starting 4" (10 cm) from end and working into the second row of mesh holes. Continue inserting needle 4 more times about 1 1/2" (4 cm) apart. You now have 5 cast on stitches.



## Knit

Place this needle with yarn in left hand.

**Row 1:** Pick up right hand needle and knit all 5 stitches using the top strands of the mesh.

Continue knitting these 5 stitches on each row, inserting needle 1 1/2" (4 cm) from previous stitch. Put your work down and open up the mesh as you go.

Stop knitting when you have about 24" (61 cm) left for binding off or when scarf has reached desired length.

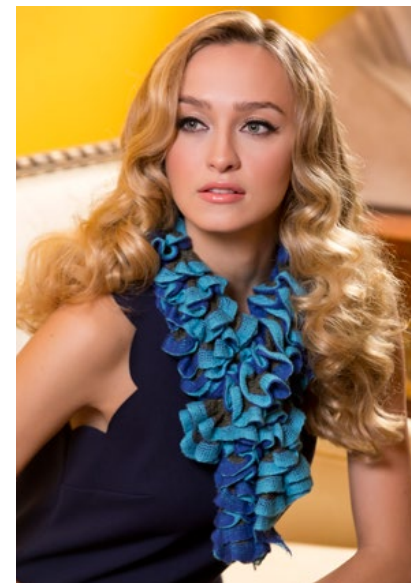
Bind off all stitches in knit. When one stitch left, pull end of yarn through last stitch and tighten.

## FINISHING

Thread sewing needle with matching thread. Tuck in ends and sew in place.

## ABBREVIATIONS

cm = centimeter; K = knit; mm = millimeter.



SHOP KIT