



KNIT
SKILL LEVEL
EASY

Designed by Red Heart Design Team

What you will need:

Red Heart® Boutique Sashay
Metallic™: 1 ball 9949 Amethyst

Susan Bates® Knitting Needles:
5.5mm [US9]

Sewing needle and matching
sewing thread.

GAUGE: Gauge is not important for
this project.



RED HEART®
Boutique Sashay
Metallic™ Art. E782M,
available in multi
color 3.5 oz (100g),
30 yd (27m) balls.



Metallic Swirls Scarf

*The shiny edge of this yarn gives the ruffles
added glam! If you are knitting a Boutique
Sashay scarf for the first time, see our
video for how it's done.*

Directions are for 62" (158 cm) scarf; changes
for 38" (97 cm) long scarf are in parentheses.

Scarf measures 4" x 62" (6" X 38")
[10 x 158 (15 x 97) cm]

NOTE

For longer scarf cast on 6 stitches; for a
shorter scarf cast on 10 stitches.

Stretch one end of the Sashay open for
several inches and lay it flat, placing the edge
with the metallic thread along the bottom.
Notice that the Sashay yarn is a mesh of
holes. You will be working with the top of the
mesh and leaving the metallic edge loose to
form the ruffle. You are using the top channel
of holes as if it is yarn.

SCARF

Beginning at the top right edge, insert tip of a
knitting needle from back to front starting 4"
(10 cm) from end. Continue inserting needle
5 (9) more times. You now have 6 (10) cast on
stitches. Place this needle in left hand.

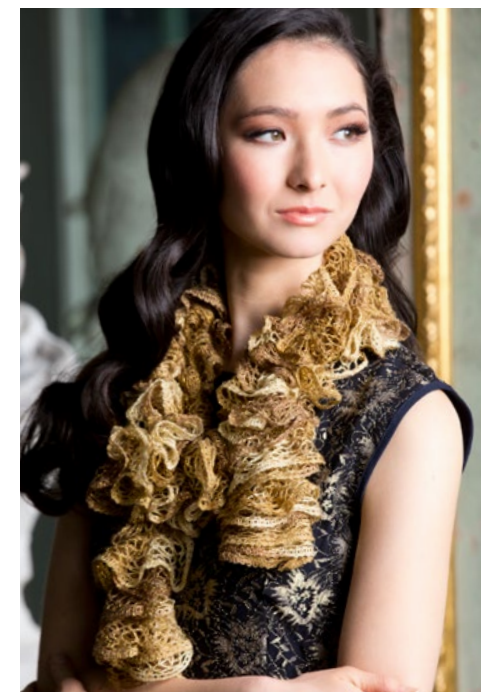
Pick up right hand needle and knit between
the top two threads of the mesh rather than
the entire strand.

Continue knitting these 6 (10) stitches on each
row, always turning your work in the same
direction at end of rows.

Put your work down and open up the mesh as
you go. Stop knitting when you have 1 yard
left for binding off.

FINISHING

Bind off loosely, drawing the end of the
Sashay through the last bound off stitch. Trim
leaving a 4" (10 cm) end. To finish the ends,
fold under the corner and tack to inside with
sewing needle and thread.



SHOP KIT