



KNIT
SKILL LEVEL
EASY

Designed by Red Heart Design Team

What you will need:

Red Heart® Boutique Sashay Sequins™: 1958 Phlox or 1945 Concord

Susan Bates® Knitting Needles: 5.5mm [US9]

Sewing needle and matching sewing thread

GAUGE: Gauge is not important for this project.



RED HEART® Boutique Sashay Sparkle™ Art. E782P, available in solids 3.5 oz (100g), 30 yd (27m) balls



Raquel's Ruffle Scarf

You'll love this revolutionary new idea for ribbon yarn that ruffles!

If the pattern sounds a bit strange, see our video.

Scarf measures 4" x 62" (6" X 38")

Directions are for 62" scarf; changes for 38" long scarf are in parentheses.

NOTE

For longer scarf cast on 6 stitches; for a shorter scarf cast on 10 stitches.

Stretch one end of the Sashay open for several inches and lay it flat, placing the edge with the metallic thread along the bottom. Notice that the Sashay yarn is a mesh of holes. You will be working with the top of the mesh and leaving the metallic edge loose to form the ruffle. You are using the top railroad track of holes as if it is yarn.

SCARF

Beginning at the top right edge, insert tip of a knitting needle from back to front starting 4" (10 cm) from end and using top row of holes (railroad tracks). Continue inserting needle 5 (9) more times skipping 1 hole between each stitch. You now have 6 (10) cast on stitches. Place this needle in left hand.

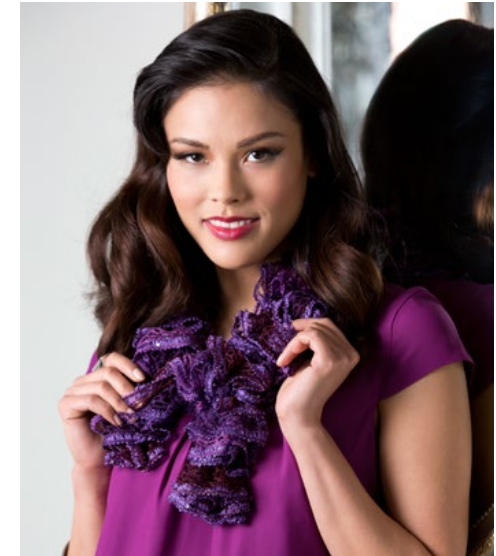
Pick up right hand needle and knit between the top two threads of the mesh (railroad tracks) going into every other hole.

Continue knitting these 6 (10) stitches on each row, turning your work in the same direction at end of rows.

Put your work down and open up the mesh as you go. Stop knitting when you have 24" (61 cm) left for binding off.

FINISHING

Bind off as usual drawing the end of the Sashay through the last bound off stitch. Trim leaving a 4" (10 cm) end. To finish the ends, fold under the corner and tack to inside with sewing needle and thread.



SHOP KIT