



KNIT  
SKILL LEVEL  
EASY

Designed by Jean Guirguis

## What you will need:

RED HEART® Boutique Treasure™:  
4 balls 1919 Watercolors

Susan Bates® knitting needles:  
5.5mm [US 9]

Cable needle, yarn needle,  
pompom maker (optional)

**GAUGE:** 18 sts = 4" (10 cm); 20  
rows = 4" (10 cm) over 2x2 Rib.  
**CHECK YOUR GAUGE.** Use any  
size needle to obtain the gauge.



RED HEART® Boutique  
Treasure™ Art E788  
available in 3.5 oz  
(100 g), 151 yds (138  
m) balls



# Reversible Cable Scarf

*This scarf has it all! A beautiful  
cable that looks the same from  
either side, plus a wonderful yarn  
blend with great color shadings!*

Scarf measures 6" (15 cm) wide and 60½"  
(154 cm) long.

## Special Stitches

**16-st RC** = Slip 8 sts to cable needle and hold to back of work, (K2, P2) twice, (K2, P2) twice from cable needle.

**16-st LC** = Slip 8 sts to cable needle and hold to front of work, (K2, P2) twice, (K2, P2) twice from cable needle.

## Pattern Stitches

### 2x2 Rib (over even number of sts)

**Row 1 (right side):** \*K2, P2; repeat from \* to end of row.

**Row 2:** Knit the K sts, Purl the P sts.  
Repeat Row 2 for 2x2 Rib.

## Seed Stitch

**Row 1 (right side):** \*K1, P1; repeat from \* to end of row.

**Row 2:** Purl the K sts and Knit the P sts.  
Repeat Row 2 for Seed st.

## Notes

1. Scarf is worked in one piece.
2. Pattern can be worked by following written instructions or reading chart. Read right side rows of chart from right to left and wrong side rows from left to right.

## SCARF

Cast on 48 sts.

**Rows 1-4:** Work in Seed st across row.

**Rows 5 and 6:** Work first 4 sts in Seed st, work 40 sts in 2x2 Rib, work 4 sts in Seed st.

**Row 7:** Work first 4 sts in Seed st, work 20 sts in 2x2 Rib, work 16-st RC, work 4 sts in 2x2 Rib, work 4 sts in Seed st.

**Rows 8-16:** Work first 4 sts in Seed st, work 40 sts in 2x2 Rib, work 4 sts Seed st.

**Row 17:** Work first 4 sts in Seed st, work 8 sts in 2x2 Rib, work 16-st LC, work 16 sts in 2x2 Rib, work 4 sts in Seed st.

**Rows 18-24:** Work first 4 sts in Seed st, work 40 sts in 2x2 Rib, work 4 sts in Seed st.  
Repeat Rows 5-24 until scarf measures 59½" (151 cm) from beginning. Work 3 rows in Seed st.

Bind off all sts loosely in Seed st.

## FINISHING

With yarn needle, weave in all loose ends.  
Lightly block into shape.

## Optional

Make four 1" (2.5 cm) pompoms and attach to corners of scarf.

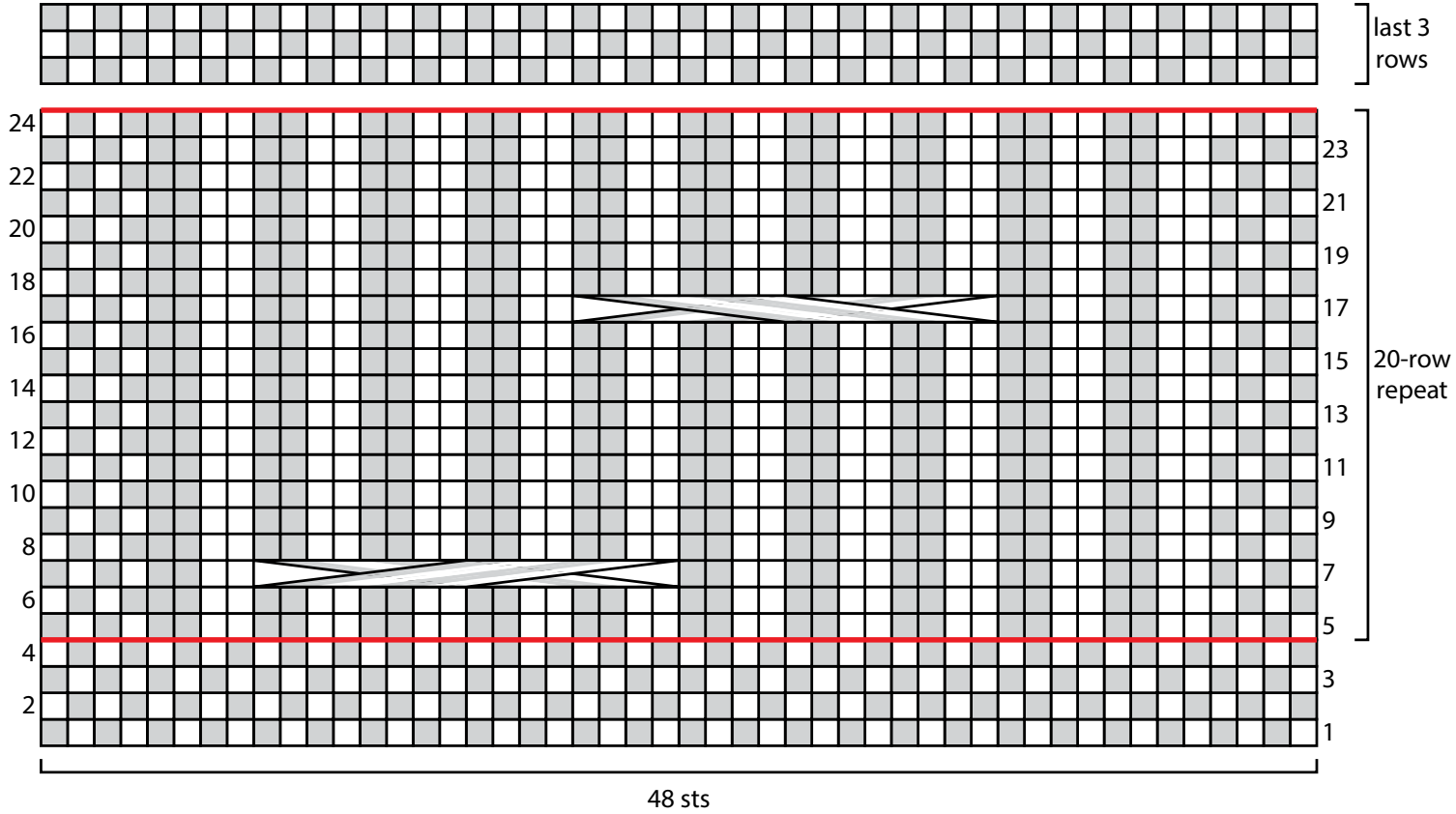
## ABBREVIATIONS



**k** = knit; **p** = purl; **st(s)** = stitch(es); **\*** = repeat whatever follows the \* as indicated.

See chart on next page...

SHOP KIT

## Reversible Cable Scarf



- Key
- knit on right side, purl on wrong side
  - purl on right side, knit on wrong side
  -  16-st RC (8 over 8 2x2 rib right cross)
  -  16-st LC (8 over 8 2x2 rib left cross)