



KNIT  
SKILL LEVEL  
INTERMEDIATE

Designed by Julie Farmer



## Cable Your Scarf

*Knit in a pretty color this cable pattern is perfect for women but, in a more masculine shade, men will appreciate its warmth. This quality acrylic yarn has good stitch definition that will last through machine washings.*

### What you will need:

RED HEART® With Love®: 1 skein  
1502 Iced Aqua

Susan Bates® Knitting Needles:  
5mm [US 8]

Stitch marker, cable needle, yarn  
needle

**GAUGE:** 20 sts = 4" [10 cm];  
22 rows = 4" [10 cm] in Cable  
pattern. **CHECK YOUR GAUGE.**  
Use any size needles to obtain  
the gauge.



RED HEART® With  
Love®, Art. E400  
available in solid color  
7oz (198 g), 370 yd (338 m) and  
multicolor 5oz (141 g), 230 yd  
(211 m) skeins

SHOP KIT

Scarf measures 7" [18 cm] wide and 60"  
[152.5 cm] long.

### Special Stitches

**LT (left twist):** Slip next st onto cable needle  
and hold in front, knit next st, knit st from  
cable needle.

**2/1 LPC (2 over 1 left purl cross):** Slip next 2  
sts to cable needle and hold in front, purl next  
st, knit 2 sts from cable needle.

**2/1 RPC (2 over 1 right purl cross):** Slip next  
st to cable needle and hold in back, knit next 2  
sts, purl st from cable needle.

**2/2 LC (2 over 2 left cross):** Slip next 2 sts to  
cable needle and hold in front, knit next 2 sts,  
knit 2 sts from cable needle.

**M1 (make 1):** Lift strand between needles to  
left-hand needle and knit strand through the  
back loop, twisting it to prevent a hole.

### SCARF

Cast on 30 sts.

Work in Garter St. (knit every row) for 4 rows.

### Begin Cable Pattern

**Row 1 (Right Side):** K3, place marker, p1, k2,  
p4, (k1, m1) twice, p6, (k1, m1) twice, p4, k2,  
p1, place marker, k3—34 sts.

**Row 2 (and all even Wrong Side rows):** K3,  
knit the knit sts and purl the purl sts inside the  
2 markers, k3.

**Row 3:** K3, p1, LT, p4, 2/2 LC, p6, 2/2 LC, p4,  
LT, p1, k3.

**Row 5:** K3, p1, k2, p3, 2/1 RPC, 2/1 LPC, p4,  
2/1 RPC, 2/1 LPC, p3, k2, p1, k3.

**Row 7:** K3, p1, LT, [p2, 2/1 RPC, p2, 2/1 LPC]  
twice, p2, LT, p1, k3.

**Row 9:** K3, p1, k2, p1, [2/1 RPC, p4, 2/1 LPC]  
twice, p1, k2, p1, k3.

**Row 11:** K3, p1, LT, p1, k2, p6, 2/2 LC, p6, k2,  
p1, LT, p1, k3.

**Row 13:** K3, p1, k2, p1, [2/1 LPC, p4, 2/1 RPC]  
twice, p1, k2, p1, k3.

**Row 15:** K3, p1, LT, [p2, 2/1 LPC, p2, 2/1 RPC]  
twice, p2, LT, p1, k3.

**Row 17:** K3, p1, k2, p3, 2/1 LPC, 2/1 RPC, p4,  
2/1 LPC, 2/1 RPC, p3, k2, p1, k3.

Repeat Rows 2–17 until piece measures 59"  
[149 cm] ending with a wrong side row.

**Next Row:** K10, [k2tog] twice, k6, [k2tog]  
twice, k10 – 30 sts.

Work 3 more rows in Garter St. (knit every  
row). Bind off.

### FINISHING

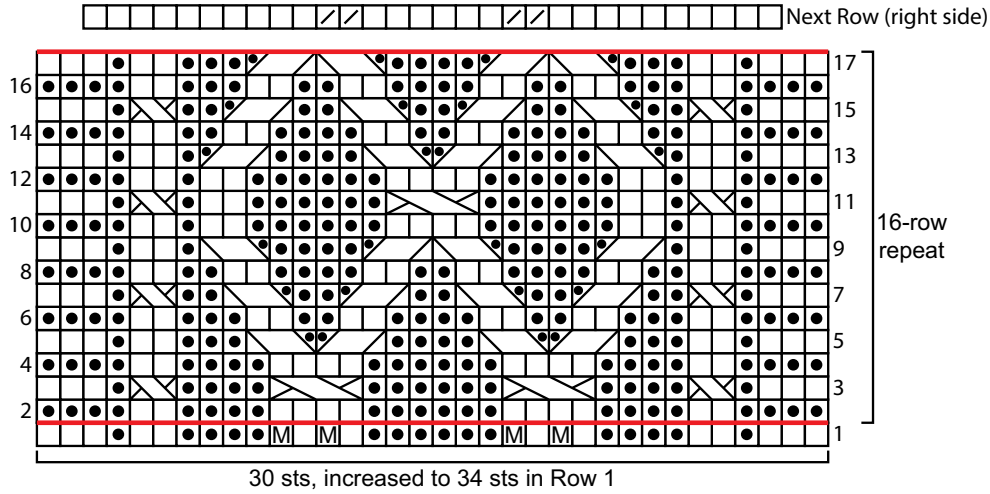
Weave in all ends.

### ABBREVIATIONS

**k** = knit; **k2tog** = knit next 2 sts together; **p** =  
purl; **st(s)** = stitch(es); **[ ]** = work directions in  
brackets the number of times specified; \* =  
repeat whatever follows the \* as indicated.

*See schematic on next page*

Cable Pattern



Key

- knit on RS, purl on WS
- purl on RS, knit on WS
- k2tog (knit 2 stitches together)
- M make 1
- LT (left twist)
- 2/1 LPC (2 over 1 left purl cross)
- 2/1 RPC (2 over 1 right purl cross)
- 2/2 LC (2 over 2 left cross)

