



KNIT
SKILL LEVEL
EASY

Designed by Lisa Gentry

What you will need:

RED HEART® Hygge Charm™:
3 balls 6724 Meteor

Susan Bates® Knitting
Needles: 6mm [US 10]

Yarn needle

GAUGE: 16 sts (2 pattern repeats) = 4" [10 cm]; 22 rows = 4" [10 cm] in Lace pattern.
CHECK YOUR GAUGE. Use any size needles to obtain the gauge.



RED HEART® Hygge Charm™,
Art E882 available
in 7 oz (198 g), 432 yd (395 m) balls



First-Timer Knit Lace Scarf

If you haven't tried a lace pattern yet, this one is ideal for first timers. You can start by following the pattern text and then switch to the chart (if you are more visual like most of us). The brushed medium weight yarn has a touch of shimmer, and any of the colors would work well for this scarf.

SHOP KIT

Scarf measures about 16 x 66" [40.5 x 167.5 cm].

Notes

1. Scarf is worked back and forth in rows of Lace pattern.
2. If you would like a wider to piece for a Shawl, cast on more stitches in multiples of 8 sts. Each additional 8 sts cast-on adds about 2" [5 cm] to the width. Additional yarn may be needed for a wider piece.
3. Lace pattern can be worked by following written instructions or reading chart. Read right side rows of chart from right to left and wrong side rows from left to right.

Special Stitches

s2k1p2 (slip 2, knit, pass 2 slipped stitches over) = Slip 2 stitches as if to k2tog, k1, pass the 2 slipped stitches over the knit stitch and off the needle - 2 sts decreased.

skp (slip, knit, pass slipped stitch over) = Slip next stitch as if to knit to right needle, knit next stitch, lift slipped stitch over knit stitch and off needle - 1 st decreased.

SCARF

Cast on 65 sts.

Beginning with a wrong side (purl) row, work in Stockinette stitch (knit on right side, purl on wrong side) for 3 rows.

Lace Pattern

Row 1 (right side): K6, *k1, yo, s2k1p2, yo; repeat from * to last 7 sts, k7.

Row 2: P1, [p2tog, yo] twice, purl to last 5 sts, [yo, p2tog] twice, p1.

Row 3: K6, *k5, yo, s2k1p2, yo; repeat from * to last 11 sts, k11.

Rows 4 and 5: Repeat Rows 2 and 3.

Row 6: Repeat Row 2.

Row 7: K6, *yo, skp, k1, k2tog, yo, k3; repeat from * to last 3 sts, k3.

Row 8: Repeat Row 2.

Repeat Rows 1-8 until piece measures



about 61" [155 cm] from beginning, end with Row 1 as the last row you work. Beginning with a wrong side (purl) row, work in Stockinette stitch for 3 rows. Bind off as if to knit.

FINISHING

Weave in ends. Block piece to finished measurements.

ABBREVIATIONS

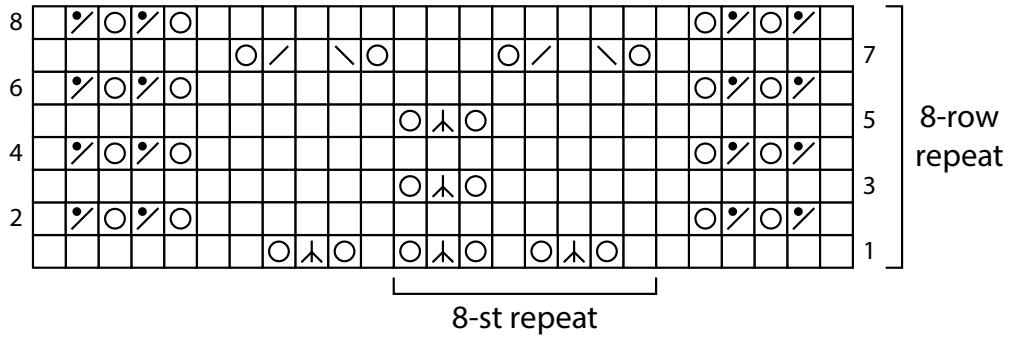
k = knit; **k2tog** = knit 2 stitches together; **p** = purl; **p2tog** = purl 2 stitches together; **st(s)** = stitch(es); **yo** = yarn over; **[]** = work directions in brackets the number of times specified; *** or** = repeat whatever follows the * as indicated.

See next page for chart and alternate photo



2015 - 2018
WOMEN'S CHOICE AWARD™
AMERICA'S MOST RECOMMENDED
YARN BRAND

Lace Pattern



KEY	
<input type="checkbox"/>	knit on right side, purl on wrong side
<input checked="" type="checkbox"/>	yarn over
<input checked="" type="checkbox"/>	k2tog (knit 2 stitches together)
<input checked="" type="checkbox"/>	skp (slip, knit, pass over)
<input checked="" type="checkbox"/>	p2tog (purl 2 stitches together)
<input checked="" type="checkbox"/>	s2k1p2 (slip 2, k1, pss2)

