



KNIT
SKILL LEVEL
EASY

Designed by Cathy Payson



What you will need:

RED HEART® With Love®: 1 skein each of 1012 Black **A**, 1252 Mango **B**, and 1101 Eggshell **C**

Susan Bates® Knitting Needles:
5mm [US 9]

Stitch markers (optional),
yarn needle

GAUGE: 16 sts = 4" (10 cm); 22 rows = 4" (10 cm) in Stockinette stitch (knit on right side, purl on wrong side). **CHECK YOUR GAUGE.** Use any size needles to obtain the gauge.



RED HEART® With Love®, Art. E400 available in solid color 7 oz (198 g), 390 yd (357 m) and multicolor 5 oz (141 g), 230 yd (211 m) skeins

SHOP KIT

Fair Isle Skull Cap

Skeleton heads are knit around this cap for the Halloween season or any season. The rib band offers comfort for a range of head sizes.

Cap measures 20" (51 cm) circumference and will stretch to fit a range of sizes.

Notes

- Hat is worked back and forth in rows. Side edges are sewn together for back seam.
- A skull pattern is worked across the body of hat. The skull pattern can be worked by following the written instructions or reading the chart. Read right side rows of chart from right to left and wrong side rows from left to right.

CAP

With **A**, cast on 82 sts.

Row 1 (wrong side): With **A**, knit.

Row 2 (right side): With **B**, knit.

Ribbing

Row 1 (wrong side): With **B**, p2, *k2, p2; repeat from * to end of row.

Row 2: With **B**, k2, *p2, k2; repeat from * to end of row.

Repeat last 2 rows until ribbing measures about 2" (5 cm) from beginning, end with a wrong side row.

Lower Stripes

Row 1 (right side): With **A**, knit.

Row 2 (wrong side): With **A**, knit.

Rows 3 and 4: With **C**, work in Stockinette st (knit on right side, purl on wrong side) for 2 rows.

Rows 5 and 6: With **B**, work in Stockinette st for 2 rows.

Rows 7 and 8: With **C**, work in Stockinette st for 2 rows.

Skull Pattern

Note: You may find it helpful to place stitch markers between the 16-stitch repeats of the skull pattern.

Row 1 (right side): With **C**, k1 (edge st), [with **C**, k4; with **A**, k3; with **C**, k9] 5 times; with **C**, k1 (edge st).

Row 2: With **C**, p1, [with **C**, p8; with **A**, p5; with **C**, p3] 5 times; with **C**, p1.

Row 3: With **C**, k1, [with **C**, k2; with **A**, k1; with **C**, k5; with **A**, k1; with **C**, k7] 5 times; with **C**, k1.

Row 4: With **C**, p1, [with **C**, p7; with **A**, p1; with **C**, p1; with **A**, p3; with **C**, p1; with **A**, p1; with **C**, p2] 5 times; with **C**, p1.

Row 5: With **C**, k1, [with **C**, k3; with **A**, k2; with **C**, k1; with **A**, k2; with **C**, k8] 5 times; with **C**, k1.

Row 6: With **C**, p1, [with **C**, p7; with **A**, p2; with **C**, p3; with **A**, p2; with **C**, p2] 5 times; with **C**, p1.

Row 7: With **C**, k1, [with **C**, k2; with **A**, k3; with **C**, k1; with **A**, k3; with **C**, k7] 5 times; with **C**, k1.

Row 8: With **C**, p1, [with **C**, p7; with **A**, p7; with **C**, p2] 5 times; with **C**, p1.

Row 9: With **C**, k1, [with **C**, k1; with **A**, k2; with **C**, k1; with **A**, k3; with **C**, k1; with **A**, k2; with **C**, k6] 5 times; with **C**, k1.

Row 10: With **C**, p1, [with **C**, p5; with **A**, p2; with **C**, p3; with **A**, p1; with **C**, p3; with **A**, p2] 5 times; with **A**, p1.

Row 11: With **C**, k1, [with **A**, k3; with **C**, k1; with **A**, k3; with **C**, k5] 5 times; with **C**, k1.

Row 12: With **C**, p1, [with **C**, p5; with **A**, p11] 5 times; with **C**, p1.

Continued...



2015
WOMEN'S CHOICE AWARD™
AMERICA'S MOST RECOMMENDED
YARN BRAND

Row 13: With **C**, k1, [with **A**, k11; with **C**, k5] 5 times, with **C**, k1.

Row 14: With **C**, p1, [with **C**, p6; with **A**, p9; with **C**, p1] 5 times; with **C**, p1.

Row 15: With **C**, k1, [with **C**, k1; with **A**, k9; with **C**, k6] 5 times; with **C**, k1.

Row 16: With **C**, p1, [with **C**, p7; with **A**, p7; with **C**, p2] 5 times; with **C**, p1.

Row 17: With **C**, k1, [with **C**, k3; with **A**, k5; with **C**, k8] 5 times; with **C**, k1.

Row 18: With **C**, p1, [with **C**, p9; with **A**, p3; with **C**, p4] 5 times; with **C**, p1.

Upper Stripes

Rows 1 and 2: With **C**, work in Stockinette st for 2 rows.

Rows 3 and 4: With **B**, work in Stockinette st for 2 rows.

Rows 5 and 6: With **C**, work in Stockinette st for 2 rows.

Rows 7 and 8: With **A**, work in Stockinette st for 2 rows.

Shape Crown

Row 1: With **B**, k1 (edge st), [k6, k2tog] 10 times, k1 (edge st)—72 sts.

Row 2: With **B**, purl.

Row 3: With **C**, k1 (edge st), [k5, k2tog] 10 times, k1 (edge st)—62 sts.

Row 4: With **C**, purl.

Row 5: With **A**, k1, [k4, k2tog] 10 times, k1—52 sts.

Row 6: With **A**, purl.

Row 7: With **B**, k1, [k3, k2tog] 10 times, k1—42 sts.

Row 8: With **B**, purl.

Row 9: With **C**, k1, [k2, k2tog] 10 times, k1—32 sts.

Row 10: With **C**, purl.

Row 11: With **A**, k1, [k1, k2tog] 10 times, k1—22 sts.

Row 12: With **A**, purl.

Row 13: With **B**, k1, [k2tog] 10 times, k1—12 sts.

Row 14: With **B**, purl.

Row 15: With **C**, k1, [k2tog] 5 times, k1—7 sts.

Cut yarn, leaving a long tail for sewing.

FINISHING

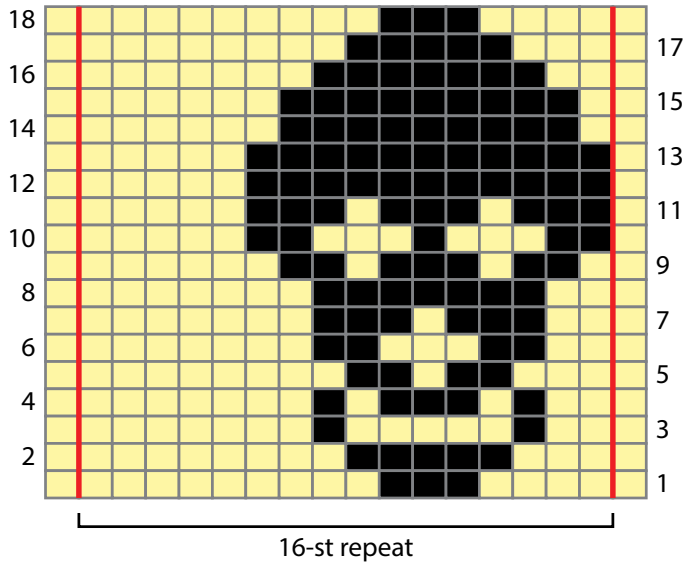
With long tail, taking care to match stripes, sew side edges together for back seam. Weave in ends.

ABBREVIATIONS

A, B, and C = Color A, Color B, and Color C;
k = knit; **k2tog** = knit next 2 sts together;
p = purl; **st(s)** = stitch(es); **[]** = work directions in brackets the number of times specified; * = repeat whatever follows the * as indicated.

See next page for chart and alternate photo





- 1012 Black (A)
- 1011 Eggshell (C)

