



KNIT  
SKILL LEVEL  
INTERMEDIATE

Designed by Timothy Peters



## Lattice Look Beanie

*Take your basic beanie and add some on trend cables for interest. You'll love watching the cables appear as you knit this winning style.*

### What you will need:

**RED HEART® Soft®:** 1 ball 4601 Off White

**Susan Bates® Circular Knitting Needles:** 3.75mm [US 5] and 4.5mm [US 7], 16" [40cm] long

**Susan Bates® Double Pointed Needles:** 1 set 4.5mm [US 7]

Cable needle, stitch marker, yarn needle

**GAUGE:** 28 sts = 4" [10 cm]; 26 rounds = 4" [10 cm] in Rib slightly stretched using larger needles.

**CHECK YOUR GAUGE.** Use any size needles to obtain the gauge.



**RED HEART® Soft®,** Art. E728 available in solid color 5 oz (141 g), 256 yd (234 m), print 4 oz (113 g), 204 yd (187 m), and heather 4 oz (113 g), 212 yd (194 m) balls

SHOP KIT

**Directions are for size Small; changes for sizes Medium/Large are in parentheses.**

**To Fit Head Circumference:** 22 (24") [56 (61) cm] Size Small fits as a skullcap. Size Medium/Large fits as a beanie with upturned brim.

### Note

Hat is worked in round on circular needle. Change to double pointed needles as sts are decreased.

### PATTERN STITCHES

**K2, p2 Rib (multiple of 4 sts)**

**Round 1 (Right Side):** \* K2, p2; repeat from \* around.

Repeat Round 1 for K2, p2 rib.

### SPECIAL ABBREVIATIONS

**2/2 LC:** Slip next 2 sts to cable needle, hold to front, k2, k2 from cable needle.

**2/2 RC:** Slip next 2 sts to cable needle, hold to back, k2, k2 from cable needle.

**2/2 LPC:** Slip next 2 sts to cable needle, hold to front, p2, k2 from cable needle.

**2/2 RPC:** Slip next 2 sts to cable needle, hold to back, k2, p2 from cable needle.

**ssk:** (1 st decrease) Slip next two stitches knitwise to right needle, insert point of left needle through front of sts, knit these sts together through back loop.

**ssp:** (1 st decrease) Slip next two stitches knitwise to right needle, insert point of left needle through back of sts, purl these sts together through back loop.

### BEANIE

With smaller needle, cast on 100 (120) sts. Place marker for beginning of round and join, being careful not to twist sts. Work in K2, p2 rib for 1½ (3½)" [17 (9) cm].

**Next Round (Inc):** [(K2, p2) twice, k1, knit in front and back of next st, p1, purl in front and back of next st, (k2, p2) twice] 5 (6) times – 110 (132) sts

**Next Round:** Work in K2, p2 rib.

### Setup Cable Pattern

Change to larger needle, beginning with Round 1, work

**Cable pattern from chart or instructions below:**

**Round 1:** [K2, p2, k2, p2, 2/2 LPC, 2/2 RPC, p2, k2, p2] 5 (6) times.

**Round 2:** Knit the knit sts and purl the purl sts.

**Round 3:** [K2, p2, k2, p4, 2/2 LC, p4, k2, p2] 5 (6) times.

**Round 4:** Knit the knit sts and purl the purl sts.

**Round 5:** [K2, p2, (2/2 LPC, 2/2 RPC) twice, p2] 5 (6) times.

**Round 6:** Knit the knit sts and purl the purl sts.

**Round 7:** [K2, p4, 2/2 RC, p4, 2/2 RC, p4] 5 (6) times.

**Round 8:** Knit the knit sts and purl the purl sts.

**Round 9:** [K2, p2, (2/2 RPC, 2/2 LPC) twice, p2] 5 (6) times.

**Round 10:** Knit the knit sts and purl the purl sts.

**Round 11:** Repeat Round 3.

Continued...



2015  
**WOMEN'S CHOICE AWARD™**  
AMERICA'S MOST RECOMMENDED  
YARN BRAND

**Round 12:** Knit the knit sts and purl the purl sts.

**Round 13:** Repeat Round 5.

**Round 14:** Knit the knit sts and purl the purl sts.

**Round 15:** Repeat Round 7.

**Round 16:** Knit the knit sts and purl the purl sts.

**Round 17:** Repeat Round 9.

**Round 18:** Knit the knit sts and purl the purl sts.

**Round 19:** Repeat Round 3.

**Rounds 20-22:** Knit the knit sts and purl the purl sts.

**Round 23:** Repeat Round 3.

**Round 24:** Knit the knit sts and purl the purl sts.

**Round 25:** [K2, p2, k2, p2, 2/2 RPC, 2/2 LPC, p2, k2, p2] 5 (6) times.

**Rounds 26-28:** Knit the knit sts and purl the purl sts.

### Shape Crown

**Round 1:** [K2, (p2, k2) twice, ssp, p2tog, (k2, p2) twice] 5 (6) times – 100 (120) sts.

**Round 2:** Knit the knit sts and purl the purl sts.

**Round 3:** [K2, p2tog, (k2, p2) 3 times, k2, p2tog] 5 (6) times – 90 (108) sts.

**Round 4:** Knit the knit sts and purl the purl sts.

**Round 5:** [K2, p1, k2, p2tog, k2, p2, k2, p2tog, k2, p1] 5 (6) times – 80 (96) sts.

**Round 6:** Knit the knit sts and purl the purl sts.

**Round 7:** [K2, (p1, k2) twice, p2tog, (k2, p1) twice] 5 (6) times – 75 (90) sts.

**Round 8:** Knit the knit sts and purl the purl sts.

**Round 9:** [(K2, p1) twice, ssk, p1, k2tog, p1, k2, p1] 5 (6) times – 65 (78) sts.

**Round 10:** Knit the knit sts and purl the purl sts.

**Round 11:** [K2, p1, ssk, (p1, k1) twice, p1, k2tog, p1] 5 (6) times – 55 (66) sts.

**Round 12:** Knit the knit sts and purl the purl sts.

**Round 13:** [K2tog, p1, (k1, p1) 4 times] 5 (6) times – 50 (60) sts.

**Round 14:** Knit the knit sts and purl the purl sts.

**Round 15:** [Ssk, k1, p1, ssk, k1, p1, ssk] 5 (6) times – 35 (42) sts.

**Round 16:** [K2, k2tog, k1, k2tog] 5 (6) times – 25 (30) sts.

**Round 17:** [K2tog, k1, k2tog] 5 (6) times – 15 (18) sts.

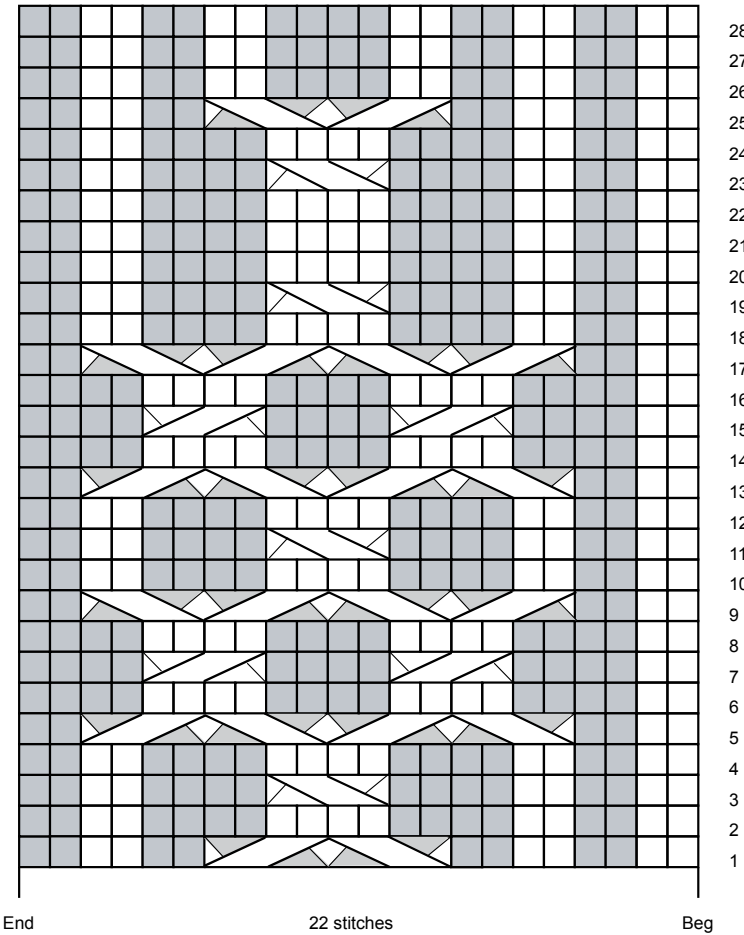
**Round 18:** K2tog around, k1 (0) – 8 (9) sts.

### FINISHING

Cut yarn, leaving long tail. Thread tail through remaining sts and pull tightly to secure. Weave in ends.

### ABBREVIATIONS

**cm** = centimeters; **k** = knit; **k2tog** = knit 2 sts together; **mm** = millimeters; **p** = purl; **p2tog** = purl 2 sts together; **st(s)** = stitch(es); **( )** = work directions in parentheses the number of times specified; **[ ]** = work directions in brackets the number of times specified; **\* or \*\*** = repeat whatever follows the \* or \*\* as indicated.



### STITCH KEY



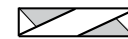
Knit



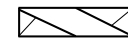
Purl



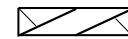
**2/2 LPC** = Slip 2 sts to cable needle, hold to front, p2, k2 from cable needle.



**2/2 RPC** = Slip 2 sts to cable needle, hold to back, k2, p2 from cable needle.



**2/2 LC** = Slip 2 sts to cable needle, hold to front, k2, k2 from cable needle.



**2/2 RC** = Slip 2 sts to cable needle, hold to back, k2, k2 from cable needle.