



KNIT | SKILL LEVEL: EASY

ABBREVIATIONS

Approx = Approximately

Dec = Decreasing

K = Knit

K2tog = Knit next 2 stitches together

P = Purl

Pat = Pattern

PM = Place marker

Rem = Remaining

Rep = Repeat

Rnd(s) = Round(s)

St(s) = Stitch(es)

MEASUREMENTS

Approx **22 (24)**" [**56 (61)** cm] in circumference

GAUGE

16 sts and 24 rows = 4" [10 cm] with larger needles in Fair Isle pat

INSTRUCTIONS

With A and smaller needles, cast on **84 (92)** sts. Divide sts evenly onto 3 double-pointed needles. Join to work in rnds, taking care not to twist sts. PM for beg of rnd.

Ribbing: 1st rnd: *K1. P1. Rep from * around.

Rep last rnd of (K1. P1) ribbing for 2" [5 cm].

Change to larger needles and knit 4 rnds.

Knit in Chart 1 to end of chart, reading rnds from **right to left** and noting 4-st rep will be worked **21 (23)** times.

See Chart 1 on page 2.

With A, knit 1 rnd, dec **4 (2)** sts evenly around. **80 (90)** sts.

Knit 3 rnds.

Knit in Chart 2 to end of chart, reading rnds from **right to left** and noting 10-st rep will be worked **8 (9)** times.

See Chart 2 on page 2.

MATERIALS

Red Heart® With Love® (Solids: 7 oz/198 g; 370 yds/338 m)

Sizes	S	M	
Contrast A Peacock (1505)	1	1	ball
Contrast B Tan (1308)	1	1	ball
Contrast C Pewter (1401)	1	1	ball

Sizes U.S. 8 (5 mm) and U.S. 9 (5.5 mm) Susan Bates® double-pointed knitting needles **or size needed to obtain gauge**. Susan Bates® Steel Yarn Needle. Susan Bates® Split-Lock Stitch Count Markers.

Shape Crown

1st rnd: *K8. K2tog. Rep from * around. **72 (81)** sts.

2nd rnd: *K7. K2tog. Rep from * around. **64 (72)** sts.

3rd rnd: *K6. K2tog. Rep from * around. **56 (63)** sts.

4th rnd: *K5. K2tog. Rep from * around. **48 (54)** sts.

5th rnd: *K4. K2tog. Rep from * around. **40 (45)** sts.

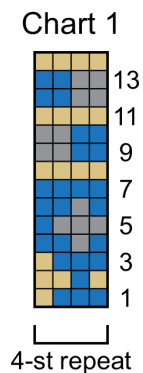
6th rnd: *K3. K2tog. Rep from * around. **32 (36)** sts.

7th rnd: *K2. K2tog. Rep from * around. **24 (27)** sts.

8th rnd: *K1. K2tog. Rep from * around. **16 (18)** sts.

9th rnd: *K1. K2tog. Rep from * around. **8 (9)** sts.

Cut yarn, leaving a long tail. Thread yarn through rem sts and pull tightly. Fasten securely.



Stitch Key

- = A
- = B
- = C

