



MATERIALS

Red Heart® Super Saver™ (7 oz/198 g; 364yds/333 m)

Main Color (MC) Minty (0520) **1 ball**

Contrast A Pretty n' Pink (0722) **1 ball**

Size U.S. 8 [5 mm] circular knitting needle 16" [40.5 cm] long. Set of four size U.S. 8 [5 mm] double-pointed knitting needles **or size needed to obtain gauge.** Yarn needle. Stitch marker.



KNIT | SKILL LEVEL: **EASY**

ABBREVIATIONS

Alt = Alternate

Approx =
Approximately

Beg = Begin(ning)

K = Knit

K1tbl = Knit next
stitch through back
loop only

K2tog = Knit next
2 stitches together

Kfb = Increase
1 stitch by knitting
into front and back of
next stitch

P = Purl

PM = Place marker

Rem = Remain(ing)

Rep = Repeat

Rnd(s) = Round(s)

St(s) = Stitch(es)

WS = Wrong side

SIZE

One size to fit Adult.

GAUGE

17 sts and 23 rnds = 4" [10 cm] in
stocking st.

INSTRUCTIONS

HAT

With MC and circular needle, cast
on 72 sts. Join to work in the rnd,
being careful not to twist sts. PM
on first st.

1st rnd: *K1tbl. P1. Rep from *
around.

Rep 1st rnd for (K1tbl. P1) ribbing
until work from beg measures 1½"
[4 cm].

Knit even in rnds until work from
beg measures approx 7" [18 cm].

Shape Crown

Note: Change to double-pointed
needles when necessary.

1st rnd: *K7. K2tog. Rep from *
around. 64 sts.

2nd and alt rnds: Knit.

3rd rnd: *K6. K2tog. Rep from *
around. 56 sts.

5th rnd: *K5. K2tog. Rep from *
around. 48 sts.

7th rnd: *K4. K2tog. Rep from *
around. 40 sts.

9th rnd: *K3. K2tog. Rep from * around. 32 sts.

11th rnd: *K2. K2tog. Rep from * around. 24 sts.

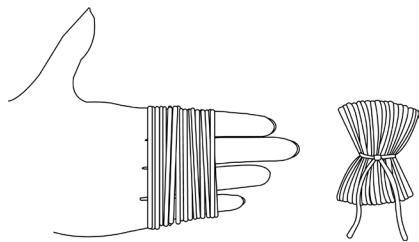
13th rnd: *K1. K2tog. Rep from * around. 16 sts.

15th rnd: *K2tog. Rep from * around. 8 sts.

FINISHING

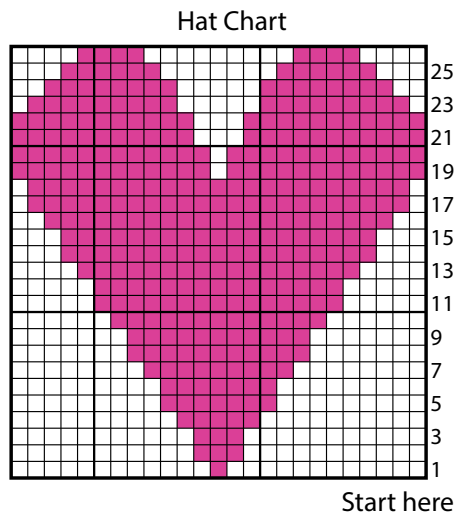
Cut yarn leaving a long end. Thread end through rem sts. Pull tightly. Fasten securely.

Pompom: Wind A around 4 fingers 100 times. Tie tightly in the middle and leave a long end for attaching to Hat. Cut loops at both ends and trim to smooth round shape. Sew securely to top of Hat.



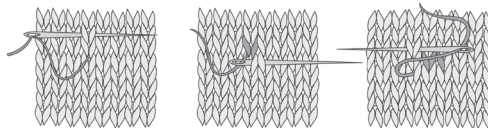
Duplicate Stitch Heart

With A and yarn needle, work duplicate st chart, starting base of heart two rows up from ribbing, and centering heart between two sets of decreases.



Key

- Main Color (MC)
- A in duplicate st



DUPLICATE ST

FINGERLESS MITTENS (Left and Right make alike)

With set of double-pointed MC, cast on 36 sts. Divide sts onto 3 needles (12, 12, 12) and join in rnd, PM on first st.

1st rnd: *K1tbl. P1. Rep from * around.

Rep last rnd of (K1tbl. P1) ribbing for 2" [5 cm].

Knit 6 rnds.

Shape thumb gusset: 1st rnd: K17. (Kfb) twice. Knit to end of rnd.

2nd and alt rnds: Knit.

3rd rnd: K17. Kfb. K2. Kfb. Knit to end of rnd.

5th rnd: K17. Kfb. K4. Kfb. Knit to end of rnd.

7th rnd: K17. Kfb. K6. Kfb. Knit to end of rnd.

9th rnd: K17. Kfb. K8. Kfb. Knit to end of rnd.

11th rnd: K17. Kfb. K10. Kfb. Knit to end of rnd. 48 sts.

12th rnd: K31. Turn.

Note: Work Thumb back and forth across 2 needles in rows.

Thumb: Next row: (WS). Cast on 2 sts. P14. **Turn.** Slip rem sts onto st holder.

Cont on 16 sts in stocking st for 3 rows. Cast off. Sew Thumb seam.

With RS facing, join yarn to rem sts on st holder and knit to end of rnd, picking up 2 sts at base of Thumb. 36 sts.

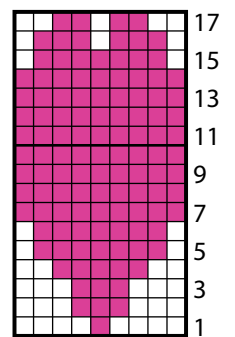
Knit 8 rnds.

Work 4 rnds in (K1tbl. P1) ribbing. Cast off in ribbing.

Duplicate Stitch Heart

With A and yarn needle, work duplicate st chart, starting base of heart 1 row up from ribbing, and centering heart on side of hand.

Mitten Chart



Key

- Main Color (MC)
- A in duplicate st

Start here