



KNIT  
SKILL LEVEL  
INTERMEDIATE

Designed by Lorna Miser



## Layered Lace Dress

*You'll love the way this lacy knit drapes and flatters. The Eyelet pattern for the yoke and Lace pattern for the lower bodice and skirt are both charted and written out. So however you prefer your knit pattern, we have you covered.*

### What you will need:

**RED HEART® Soft®:** 3 (4, 4, 5, 5) balls 4601 Off White

**Susan Bates® Knitting needles:** 8mm [US 11] 29" (73.5 cm) circular needle, and 5.5mm [US 9] 29" (73.5 cm) circular needle

Stitch marker, stitch holder (optional), yarn needle

**GAUGE:** 12 sts = 4" (10 cm); 12 rows = 4" (10 cm) in Lace Pattern using larger needle. 27 sts = 8" (20.5 cm); 12 rows = 4" (10 cm) in Eyelet Pattern using smaller needle. **CHECK YOUR GAUGE. Use any size needles to obtain the gauge.**



**RED HEART® Soft®**, Art. E728 available in solid color 5 oz (141 g), 256 yd (234 m), print 4 oz (113 g), 204 yd (187 m), and heather 4oz (113g), 212 yd (194m) balls

SHOP KIT

**Directions are for size Small. Changes for sizes Medium, Large, X-Large, and XX-Large are in parentheses.**

**To Fit Bust:** 34 (38, 42, 46, 50)" (86.5 (96.5, 106.5, 117, 127) cm)

**Finished Bust:** 36 (40, 44, 48, 52)" (91.5 (101.5, 112, 122, 132) cm)

**Finished Length:** 34 (35½, 37, 38½, 40)" (86.5 (90, 94, 98, 101.5) cm)

### Notes

1. Dress is worked in the round, beginning at the hem.
2. Piece is divided at underarms and front and back worked separately, back and forth in rows.
3. Skirt is worked in Lace Pattern and yoke is worked in Eyelet Pattern. Both pattern stitches can be worked by following the written instructions or reading the charts. Read all rows of the Lace Pattern chart from right to left. Read right side rows of the Eyelet Pattern chart from right to left and wrong side rows from left to right.

### Special Stitch

**sk2p** = Slip next stitch as if to knit to right needle, k2tog, lift slipped st over the k2tog st and off needle.

### SKIRT

With larger circular needle, cast on 120 (136, 152, 160, 176) sts. Place marker for beginning of round. Prepare to work in the round.

### Hem

**Round 1:** Purl.

**Round 2:** Knit.

**Rounds 3 and 4:** Repeat Rounds 1 and 2.

### Begin Lace Pattern

**Round 1:** \*K1, yo, k2, sk2p, k2, yo; repeat from \* around.

**Round 2:** Knit.

**Round 3:** \*K2, yo, k1, sk2p, k1, yo, k1; repeat from \* around.

**Round 4:** Knit.

**Round 5:** \*K3, yo, sk2p, yo, k2; repeat from \* around.

**Round 6:** Knit.

Repeat Rounds 1–6 until piece measures about 25 (26, 27, 28, 29)" (63.5 (66, 68.5, 71, 73.5) cm) from beginning.

### YOKE

Change to smaller circular needle. Continue to repeat Rounds 1–6 of Lace Pattern for 2" (5 cm); end with an odd-numbered round and stop 4 (6, 10, 12, 12) sts before the beginning of round marker.

**Divide for Front and Back:** Bind off next 8 (12, 20, 20, 24) sts for first armhole, knit until you have 52 (56, 56, 60, 64) sts on right needle for back, bind off next 8 (12, 20, 20, 24) sts for second armhole, knit until you have 52 (56, 56, 60, 64) more sts on right needle for front.

### Front

Working over 52 (56, 56, 60, 64) front sts only, work back and forth in rows on circular needle as if working with straight needles. Back sts can remain on needle or be moved to a stitch holder if desired.

Continued...



2015 & 2016  
**WOMEN'S CHOICE AWARD™**  
AMERICA'S MOST RECOMMENDED  
YARN BRAND

**Next Row (wrong side):** Knit.

Begin Eyelet Pattern

**Row 1 (right side):** Slip 1, k3, \*yo, k2tog, k2; repeat from \* to last 4 sts, k4.

**Row 2:** Slip 1, k3, purl to last 4 sts, k4.

**Row 3:** Slip 1, k3, \*k2, yo, k2tog; repeat from \* to last 4 sts, k4.

**Row 4:** Slip 1, k3, purl to last 4 sts, k4.

Repeat Rows 1–4 until front measures about 6 (6½, 7, 7½, 8)" (15 (16.5, 18, 19, 20.5) cm) from armhole bind-off.

**Next 6 Rows:** Knit.

Bind off front sts loosely.

### Back

Rejoin yarn at beginning of back sts, ready to work a wrong side row. Work same as front.

### FINISHING

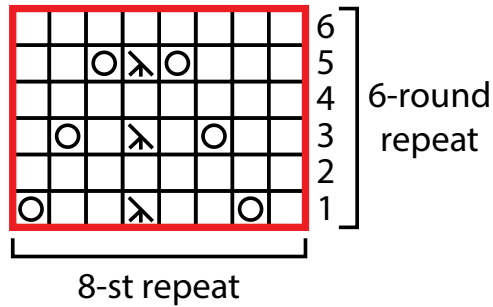
Sew shoulder seams, leaving about 8" (20.5 cm) open at center for neck. Try garment on to determine best fit for neck and shoulders. Weave in ends.

**Blocking:** Soak garment, squeeze out excess water. Shape on towel and allow to dry.

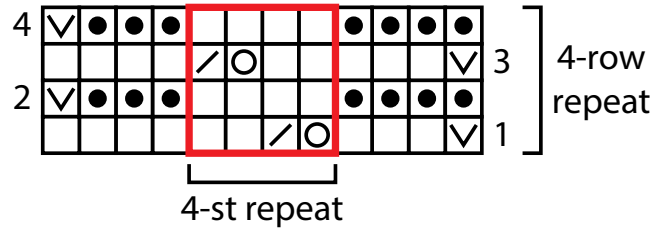
### ABBREVIATIONS

**k** = knit; **k2tog** = knit next 2 sts together; **st(s)** = stitch(es); **yo** = yarn over; **\*** = repeat whatever follows the \* as indicated.

### Lace Pattern



### Eyelet Pattern



### Key

- knit on RS, purl on WS
- purl on RS, knit on WS
- yarn over
- slip 1 with yarn at WS of work
- k2tog (knit 2 stitches together)
- sk2p (slip, k2tog, pass slipped stitch over)
- repeat

