



## MATERIALS

**Red Heart® Roll With It Sparkle™** (5.29 oz/150 g; 561 yds/513 m)

Magic (9275)

**1 ball**

Size U.S. 6 (4 mm) 24" [61 cm] circular knitting needle. Set of 4 size U.S. 6 (4 mm) double-pointed knitting needles **or size needed to obtain gauge.** Stitch marker. Safety pin.



KNIT | SKILL LEVEL: **INTERMEDIATE**

## ABBREVIATIONS

**Alt** = Alternate

**Approx** = Approximately

**Beg** = Begin(ning)

**K** = Knit

**K2tog** = Knit next 2 stitches together

**Pss** = Pass slipped stitch over

**Rep** = Repeat

**Rnd(s)** = Round(s)

**Sl1K** = Slip next stitch knitwise

**Ssk** = Slip next 2 stitches knitwise one at a time. Pass them back onto left-hand needle, then knit through back loops together

**St(s)** = Stitch(es)

**Tog** = Together

**WS** = Wrong side

**Yo** = Yarn over

## MEASUREMENTS

Approx 27½" [70 cm] around x 20½" [52 cm] long.

## GAUGE

22 sts and 28 rows = 4" [10 cm] in stocking st.

## INSTRUCTIONS

**Note:** Snood is worked top down.

**Drawstring Casing:** Cast on 152 sts. Join for working in rnd, placing marker at first st.

Knit in rnds for 1½" [4 cm].

**Next rnd:** K73. yo. ssk. K2. K2tog. yo. Knit to end of rnd. Drawstring Holes created.

Knit in rnds until work from beg measures 2" [5 cm].

Fold work in half to inside with WS tog.

**Join Drawstring Casing:** \*Pick up st from cast on edge. K2tog with next st on needle. Rep from \* around, creating Drawstring Casing.

Knit 1 rnd.

**Body of Snood:** (See chart on page 2). **1st rnd:** \*K8. (yo. ssk) twice. K7. Rep from \* around.

**2nd and alt rnds:** Knit.

**3rd rnd:** \*K6. K2tog. yo. K1. (yo. ssk) twice. K6. Rep from \* around.

**5th rnd:** \*K5. (K2tog. yo) twice. K1. (yo. ssk) twice. K5. Rep from \* around.

**7th rnd:** \*K4. (K2tog. yo) twice. K3. (yo. ssk) twice. K4. Rep from \* around.

**9th rnd:** \*K3. (K2tog. yo) twice. K5. (yo. ssk) twice. K3. Rep from \* around.

**11th rnd:** \*K4. (yo. ssk) twice. K3. (K2tog. yo) twice. K4. Rep from \* around.

**13th rnd:** \*K5. (yo. ssk) twice. K1. (K2tog. yo) twice. K5. Rep from \* around.

**15th rnd:** \*K6. yo. ssk. yo. Sl1K. K2tog. psso. yo. K2tog. yo. K6. Rep from \* around.

**17th rnd:** \*K7. yo. Sl1K. K2tog. psso. yo. K2tog. yo. K7. Rep from \* around.

**18th rnd:** Knit.

Rep 1st to 18th rnds until work from Drawstring Casing measures approx 18" [45.5 cm], ending on a 10th or 18th rnd.

**Next rnd:** \*K2. P2. Rep from \* around.

Rep last rnd until ribbing measures 1½" [4 cm].

Cast off in ribbing.

**Drawstring:** With pair of double-pointed needles, cast on 4 sts.

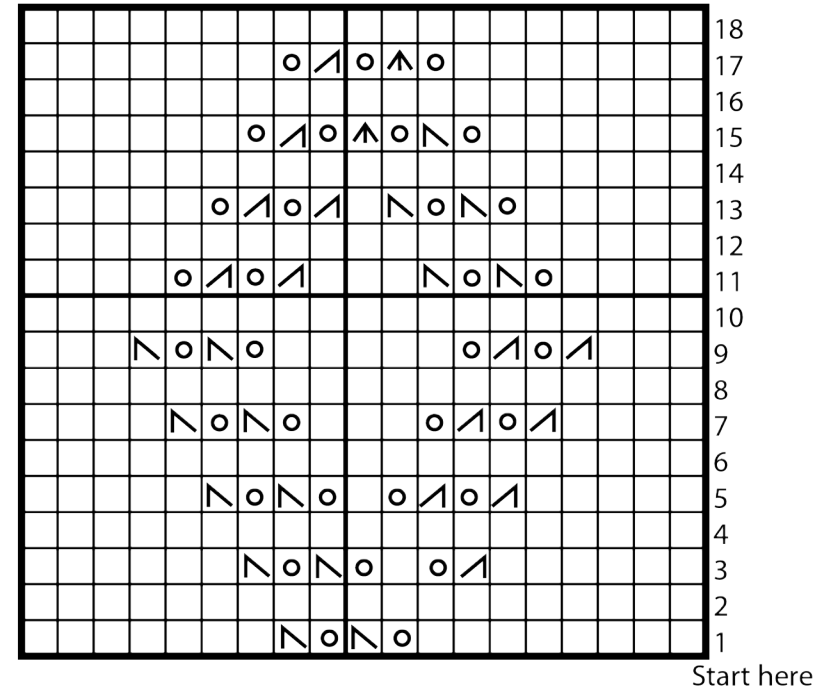
**1st row:** K4. **Do not** turn. Slide sts to opposite end of needle.

Rep last row for I-cord until piece measures 38" [96.5 cm].

**Next row:** K2tog. ssk.

**Next row:** K2tog. Fasten off.

Pin safety pin to one end of Drawstring. Work Drawstring through Casing. Remove safety pin.



Key

□ = Knit

◻ = yo

▤ = K2tog

▥ = ssk

⊞ = Sl1. K2tog. psso.