



KNIT  
SKILL LEVEL  
EASY

## What you will need:

**RED HEART® Soft®:** 3 balls 9925 Really Red

**Susan Bates® Knitting Needles:** 9 mm [US 13] 32" (80 cm) circular needle

Stitch marker, yarn needle

**GAUGE:** 10½ sts = 4" (10 cm); 17 rounds = 4" (10 cm) in Check pattern with 2 strands of yarn held together. **CHECK YOUR GAUGE. Use any size needles to obtain the gauge.**



**RED HEART® Soft®, Art. E728** available in 5 oz (141 g), 256 yd (234 m) balls



# Red Heart Cares Knit Cowl

*This is a favorite cowl of Red Heart spokesperson, Barbara Hannah Gruffman, to give to friends and loved ones who need a caring hug. It knits up quickly using two strands of yarn.*

SHOP KIT

**Cowl measures 38" (96.5 cm) circumference and 15" (38 cm) tall**

### Notes:

1. Cowl is worked in rounds with 2 strands of yarn held together throughout.
2. You may wish to roll the 3rd ball of yarn into 2 separate balls before beginning. Alternately, the beginning end of the 3rd ball and the end (tucked inside the ball) can be held together for the 2 strands.

## COWL

With 2 strands of yarn held together, loosely cast on 100 sts. Place marker for beginning of round. Being careful not to twist stitches, prepare to work in rounds. Work in Garter stitch (purl 1 round, knit 1 round, purl 1 round) for 3 rounds.

### Begin Check Pattern

**Round 1:** \*K5, p5; repeat from \* to end of round.

**Round 2:** Knit.

**Rounds 3 and 4:** Repeat Rounds 1 and 2.

**Round 5:** Repeat Round 1.

**Round 6:** \*P5, k5; repeat from \* to end of round.

**Round 7:** Knit.

**Rounds 8 and 9:** Repeat Rounds 6 and 7.

**Round 10:** Repeat Round 6.

**Rounds 11–60:** Repeat Rounds 1-10 five more times.

Work in Garter stitch for 3 rounds.

Bind off loosely.

## FINISHING

Weave in ends.

### ABBREVIATIONS

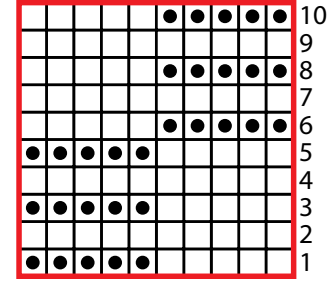
**k** = knit; **p** = purl; **st(s)** = stitch(es); \* = repeat whatever follows the \* as indicated.

*See next page for chart and alternate photo*

 **Red Cross**  
North America



Chart Pattern



Key  
 □ knit  
 ● purl