



KNIT
SKILL LEVEL
EXPERIENCED

Designed by Ann Regis

What you will need:

RED HEART® Soft®: 2 balls 9870 Deep Sea A

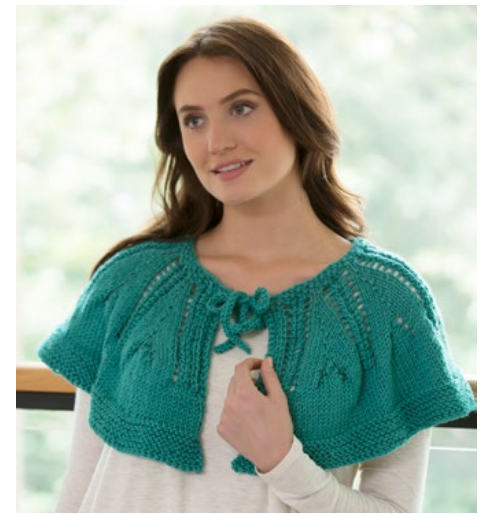
RED HEART® Boutique Sashay Metallic™: 1 ball 1961 Icy Mint B (optional)



RED HEART® Soft®, Art. E728 available in solid color 5 oz (140 g), 256 yd (234 m) and print 4 oz (113 g), 204 yd (187 m) balls



RED HEART® Boutique Sashay Metallic™, Art. E782M, available in 3.5 oz (100g), 30 yd (27m) balls



What you will need (continued):

Susan Bates® Circular Knitting Needles: 6 mm [US 10] 24" (60 cm) long

Stitch markers, yarn needle, sewing needle and thread to match **B**

Optional: Button for closure

GAUGE: 13 sts = 4" (10 cm); 19 rows = 4" (10 cm) in Stockinette St. **CHECK YOUR GAUGE. Use any size needles to obtain the gauge.**

Capelet fits most women.

Finished Measurements:

Neck: 23" [58 cm]

Length: 10.5" [27 cm]

Lower Edge: 74" [188 cm]

Continued...

Ruffle or Not Capelet

Knit this pretty capelet with or without the added touch of a ruffle. Wear it whenever you need to warm your shoulders for dressy or laid back and casual days.

SHOP KIT



2015
WOMEN'S CHOICE AWARD™
AMERICA'S MOST RECOMMENDED
YARN BRAND



NOTE

Capelet is worked in one piece from the neck down.

SPECIAL STITCHES

K2tog = Knit 2 sts together (decrease).

M1 = Make one st. Insert the left needle from front to back under horizontal strand between the two stitches, then knit into the back of that strand to make one st.

SSK = Slip next 2 stitches, one at a time as if to knit, to right needle, insert point of left needle through front of sts, knit these sts together through back loop (decrease).

YO = Yarn over. Wrap the yarn around right needle.

CAPELET

With **A**, cast on 73 sts.

Row 1: K1, p1; repeat from * across, end k1.

Rows 2-5 (Wrong Side): Repeat Row 1 and decrease 1 st in middle of Row 5—72 sts.

Row 1: K1, p1, k1 (beg 3), place marker (pm), [k1, yo, ssk, k2tog, yo, k1] 11 times, place marker, k1, p1, k1 (end 3).

Row 2 and all Wrong Side Rows: K1, p1, k1 (beg 3) p all sts and yos to last 3 sts, end k1, p1, k1 (end 3).

For remainder of piece, begin and end every row with k1,p1, k1 (beg 3) and (end 3).

Row 3: Beg 3, [k1, yo, ssk, k2tog, yo, k1, M1] 10 times, k1, yo, ssk, k2tog, yo, k1, end 3—82 sts.

Row 5: Beg 3, [k1, yo, ssk, k2tog, yo, k2, M1] 10 times, k1, yo, ssk, k2tog, yo, k1, end 3—92 sts.

Row 7: Beg 3, [k1, yo, ssk, k2tog, yo, k2, M1, k1] 10 times, k1, yo, ssk, k2tog, yo, k1, end 3—102 sts.

Row 9: Beg 3, [k1, yo, ssk, k2tog, yo, k3, M1, k1] 10 times, k1, yo, ssk, k2tog, yo, k1, end 3—112 sts.

Row 11: Beg 3, [k1, yo, ssk, k2tog, yo, k3, M1, k2] 10 times, k1, yo, ssk, k2tog, yo, k1, end 3—122 sts.

Row 13: Beg 3, [k1, yo, ssk, k2tog, yo, k4, M1, k2] 10 times, k1, yo, ssk, k2tog, yo, k1, end 3—132 sts.

Row 15: Beg 3, [k1, yo, ssk, k2tog, yo, k4, M1, k3] 10 times, k1, yo, ssk, k2tog, yo, k1, end 3—142 sts.

Row 17: Beg 3, [k1, yo, ssk, k2tog, yo, k5, M1, k3] 10 times, k1, yo, ssk, k2tog, yo, k1, end 3—152 sts.

Row 19: Beg 3, [k1, yo, ssk, k2tog, yo, k5, M1, k4] 10 times, k1, yo, ssk, k2tog, yo, k1, end 3—162 sts.

Row 21: Beg 3, [k1, yo, ssk, k2tog, yo, k5, yo, k1, yo, k4] 10 times, k1, yo, ssk, k2tog, yo, k1, end 3—182 sts.

Row 23: Beg 3, [k1, yo, ssk, k2tog, yo, k5, yo, k3, yo, k4] 10 times, k1, yo, ssk, k2tog, yo, k1, end 3—202 sts.

Row 25: Beg 3, [k1, yo, ssk, k2tog, yo, k5, yo, k5, yo, k4] 10 times, k1, yo, ssk, k2tog, yo, k1, end 3—222 sts.

Row 26: Beg 3, purl to last 3 sts, end 3.

Row 27: Beg 3, knit to last 3 sts, end 3.

Row 28: Beg 3, purl to last 3 sts, end 3.

If not adding ruffle, continue to **WITHOUT RUFFLE**.

NOTES TO ADD RUFFLE

1. Work along first row of holes at top of **B**, away from hemmed edge.
2. Pull **B** gently to open mesh every few inches as you knit **B** together with Capelet.
3. Make sure to knit **B** with same side facing you at all times so the yarn does not twist on itself.

Row 29 (Right Side): With **B**, count 6 holes over at top of mesh. With raw edge of mesh towards you, fold mesh so that first 3 holes line up with next 3 holes.

Keeping raw edge facing you, line folded mesh edge to edge of knitting. Insert needle through first mesh st (through both aligned holes), then through first st and knit, pulling yarn through st and 2 layers of mesh.

Knit next 2 sts in same way, catching 2 layers of mesh in with each st.

Continue to knit each st on needle together with each top hole of mesh to the last 3 sts on needle.

Fold raw edge of mesh towards you and line up 3 top holes of mesh as before. Cut excess mesh from ball, leaving extra to trim later.

Knit mesh and final 3 sts together as before.

Row 30: Beg 3, purl to last 3 sts, end 3.

Row 31 (Right Side): Beg 3, knit across to last 3 sts, end 3.

Rows 32-34: Repeat Rows 30-31, then repeat Row 30.

Row 35 (Right Side): Join **B** as in Row 29.

Row 36 (Wrong Side): Knit across all sts.

Knit 12 rows more, binding off loosely (knitwise) on last row.

FINISHING

Weave in yarn ends.

With sewing needle and thread to match **B**, sew hem edges together.

Tack very loose sts on **Wrong Side** to secure raw edge of **B** to main piece of **B**.

Carefully trim any excess **B**.

Pull gently along length of **B** to open mesh. Continue to **TIES**.

WITHOUT RUFFLE

Row 29 (Right Side): Beg 3, knit across to last 3 sts, end 3.

Row 30: Beg 3, purl to last 3 sts, end 3.

Row 31 (Right Side): Beg 3, knit across to last 3 sts, end 3.

Rows 32-34: Repeat Rows 30-31, then repeat Row 30.

Row 35 (Right Side): Beg 3, knit across to last 3 sts, end 3.

Row 36 (Wrong Side): Knit across all sts. Knit 12 rows more, binding off loosely (knitwise) on last row.

FINISHING

Weave in yarn ends.

TIES (make 2)

Cast on 50 sts. Knit and bind off 50 sts.

Using photo as guide, pull tie through each neck edge. Tie a knot, leaving one end longer than the other.

Tie longer ends together.

OPTIONAL BUTTON CLOSURE

Sew button on top of left front neck.

With crochet hook, make button loop on right front neck to fit around button.

ABBREVIATIONS

A, B = yarn A, B; **cm** = centimeters; **k** = knit; **k2tog** = knit 2 sts together; **pm** = place marker; **p** = purl; **st(s)** = stitch(es), **yo** = yarn over; [] = work directions in brackets the number of times specified; * **or** ** = repeat whatever follows the * or ** as indicated.