

roll neck poncho



WHAT YOU'LL NEED

MEASUREMENTS

		S	L
To Fit Bust	ins	28-36	36-44
	cm	70-90	90-110
Length at center front (approx, including fringe)	ins	29	33
	cm	73	83

MATERIALS

AUSTRALIAN SUPERFINE MERINO BY CLECKHEATON 

8 PLY 2¼oz (65g) balls

Quantity (08 Red) 8 12

Use only the yarn specified. Other yarns are likely to produce different results.

Quantities are approximate as they can vary between knitters.

Check all yarn is from the same dye lot.

NEEDLES AND EXTRAS

- 1 pair size 7 (4.5mm) knitting needles and one each size 6 (4mm) and 7 **circular** knitting needles (both 16" or 40cm long) or size needed to give correct gauge.
- yarn needle for sewing seams.
- piece of cardboard 8" or 20cm wide and crochet hook for fringe.

GAUGE

20 sts and 26 rows to 4" or 10cm over stockinette st, using larger needles.

To check your gauge, using larger needles, cast on 30 sts.

Work 40 rows stockinette st. Bind off loosely.

Check your gauge carefully.

If less sts to 4" or 10cm use smaller needles, if more sts use larger needles.

NOTE - This poncho has been worked on larger needles and at a looser gauge than usually recommended for this yarn.



AUSTRALIAN
SUPERFINE
MERINO

by Cleckheaton

GROWN IN AUSTRALIA AND MADE BY:

Wangaratta Woollen Mills



PONCHO (make 2 panels)

Using larger needles, cast on **101** (119) sts.

1st row (right side) – K1, * K3, [P1, P2tog, (yarn) twice, P2tog, P1, K3] twice, **P18** (27), rep from * once, K3, [P1, P2tog, (yarn) twice, P2tog, P1, K3] twice, K1.

2nd row – P1, * P3, [K2, (P1, P1 tbl) in yarns from previous row, K2, P3] twice, **K18** (27), rep from * once, P3, [K2, (P1, P1 tbl) in yarns from previous row, K2, P3] twice, P1.

Last 2 rows form patt.

Cont in patt until panel measures **16** (20) " or **40** (50) cm from beg, working last row on wrong side.

Tie a colored thread at beg of last row to mark end of seam.

Cont in patt until panel measures **21½** (25½) " or **54** (64) cm from beg, working last row on wrong side.

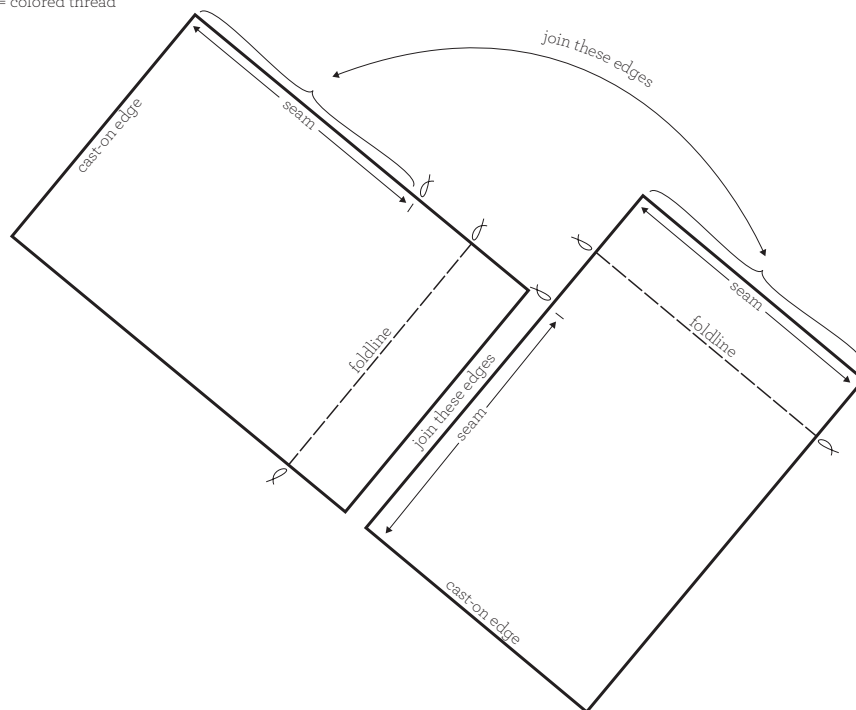
Tie a colored thread at each end of last row to mark foldline.

Cont in patt until panel measures **27** (31) " or **68** (78) cm from beg, working last row on wrong side.

Bind off loosely in patt.

ASSEMBLY DIAGRAM

∞ = colored thread

**POLO COLLAR**

NOTE – We recommend using mattress stitch to sew up your poncho.

Join bind-off edge of panel to side of other panel between cast on and first colored thread, using diagram as a guide.

With right side facing and using smaller **circular** needle, beg at seam, * knit up 27 sts evenly to foldline colored thread, knit up 27 sts evenly from foldline to next seam, rep from * once ... 108 sts.

1st round – * K2, P2, rep from * to end.

Last round forms rib.

Cont in rib until Polo Collar measures 3" or 8cm from beg.

Change to 4.5mm **circular** needle.

Cont in rib until Polo Collar measures 7" or 18cm from beg.

Bind off very loosely in rib.

TO MAKE UP

DO NOT PRESS. To make fringe, wind yarn around a piece of cardboard 8" or 20cm wide and cut along one edge. Using 4 lengths for each fringe, fold in half and using crochet hook draw loop through corner of poncho. Draw ends through loop and pull to tighten. Repeat evenly along lower edge of poncho. Trim evenly.

AUSTRALIAN
SUPERFINE
MERINO

by **Cleckheaton**

GROWN IN AUSTRALIA AND MADE BY:

Wangaratta Woollen Mills



Machine washable, available in a range of beautiful colors. For more information go to redheart.com/cleckheaton



We have made every effort to ensure that these instructions are accurate and complete. We cannot be responsible for variations in individual work, human error or if yarn other than the recommended Cleckheaton yarn is used. This pattern is protected by copyright. Australian Superfine Merino by Cleckheaton 8 ply is a trade mark of Australian Country Spinners Pty Ltd. Yarn colors shown may vary slightly due to the printing process.