



CROCHET | SKILL LEVEL: EASY

ABBREVIATIONS

Approx = Approximately

Beg = Beginning

Ch = Chain(s)

Cont = Continue

Dc = Double crochet

Rem = Remaining

Rep = Repeat

Rnd(s) = Round(s)

RS = Right side

Sc = Single crochet

Sl st = Slip stitch

Sp(s) = Space(s)

St(s) = Stitch(es)

Tog = Together

WS = Wrong side

MEASUREMENT

Approx 38" [96/5 cm] tall.

GAUGE

13 sc and 15 rows = 4" [10 cm].

INSTRUCTIONS

Notes:

- **Skeleton Pillow is worked in sections:** Head (worked from jaw up, in rows); Torso (worked from bottom up, in rows); Limbs (Arms, Legs, worked in continuous rnds).
- Head and Torso will be stuffed. Limbs will not be stuffed.

HEAD (make 2)

With A, ch 17. (See Diagram on page 2).

1st row: (RS). 1 sc in 2nd ch from hook. 1 sc in each ch to end of chain. Turn. 16 sc.

2nd to 10th rows: Ch 1. 1 sc in each st to end of row. Turn.

11th row: Ch 1. 2 sc in first st. 1 sc in each st to last st. 2 sc in last st. Turn. 18 sc.

12th to 18th rows: Rep 11th row. 32 sc at end of 18th row.

19th to 40th rows: Ch 1. 1 sc in each st to end of row. Turn. Fasten off.

MATERIALS

Red Heart® Super Saver™ (7 oz/198 g; 364 yds/333 m)

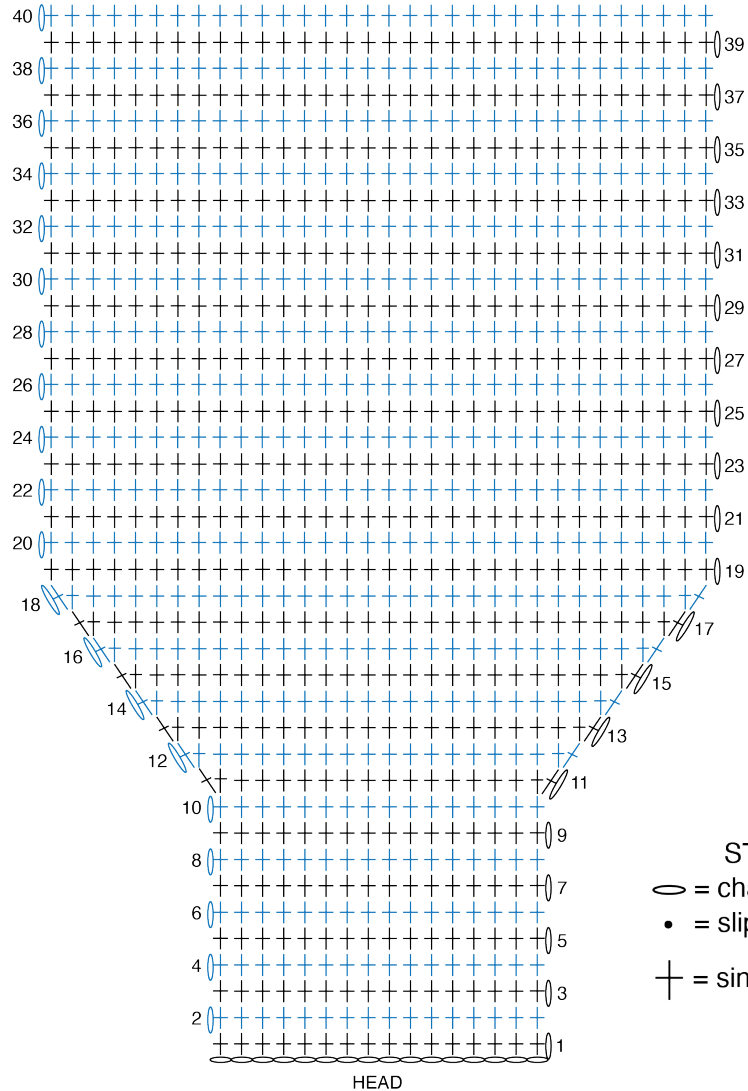
Contrast A Soft White (316)

2 balls or 660 yds/600 m

Contrast B Black (312)

1 ball or 11 yds/10 m

Size U.S. H/8 (5 mm) Susan Bates® Silvalume® crochet hook **or size needed to obtain gauge.** Susan Bates® stitch markers. Susan Bates® yarn needle. Polyfil stuffing.



TORSO (make 2)

With A, ch 33.

1st row: (RS). 1 sc in 2nd ch from hook. 1 sc in each ch to end of chain. Turn. 32 sc.

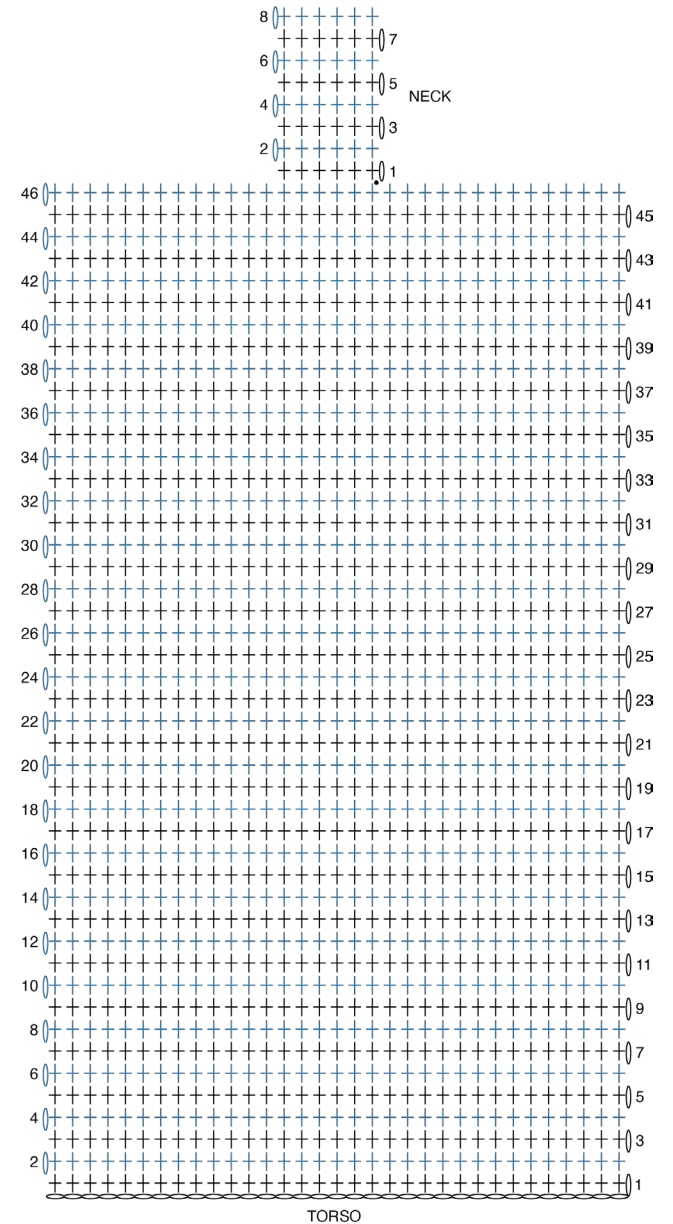
2nd to 46th rows: Ch 1. 1 sc in each st to end of row. Turn. Fasten off at end of 46th row.

Shape neck: Next row: (RS). Skip first 13 sts. Join A with sl st in next st. Ch 1. 1 sc in same sp as last sl st. 1 sc in each of next 5 sts. **Turn.** Leave rem sts unworked.

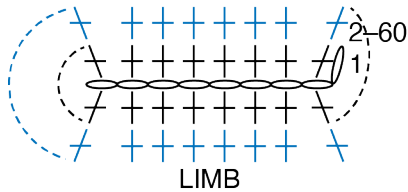
Cont on 6 center sts for neck.

Next 7 rows: Ch 1. 1 sc in each st to end of row. Turn. Fasten off.

STITCH KEY
 ○ = chain (ch)
 • = slip stitch (sl st)
 † = single crochet (sc)



LIMBS (make 4)



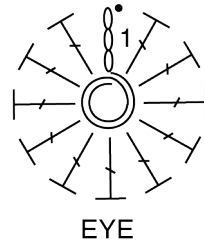
Note: Limbs are worked in a continuous spiral. **Do not** join rnds. Move marker up each rnd to maintain rnd count.

Beg at bottom edge, with A, ch 9.
1st rnd: 1 sc in 2nd ch from hook. 1 sc in each of next 7 ch. Working into opposite side of ch, 1 sc in each of next 8 ch. 16 sc. Place marker on last st.
2nd to 60th rnds: 1 sc in each sc around, moving marker up each rnd (see Note).
 Fasten off, leaving 24" [61 cm] yarn tail (sew this edge to Torso).

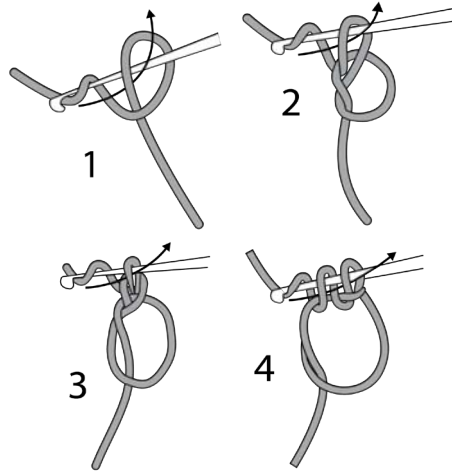
STITCH KEY

- = chain (ch)
- = slip stitch (sl st)
- ⊥ = single crochet (sc)
- ⌋ = double crochet (dc)
- ⊙ = magic ring

EYES (make 2)



With B, make magic ring.



1st rnd: Ch 3. Work 11 dc in ring. Join with sl st to top of ch 3. Fasten off, leaving 16" [40.5 cm] yarn tail.

MOUTH



With B, ch 11.

1st row: (RS). 1 sc in 2nd ch from hook. 1 sc in each ch to end of chain. 10 sc. Fasten off, leaving 16" [40.5 cm] yarn tail.

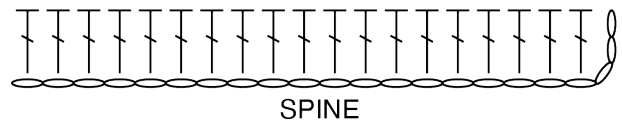
SPINE

With B, ch 22.

1st row: (RS). 1 dc in 4th ch from hook. 1 dc in each ch to end of chain. 20 dc. Fasten off, leaving 36" [91.5 cm] yarn tail.

STITCH KEY

- = chain (ch)
- = slip stitch (sl st)
- ⊥ = single crochet (sc)
- ⌋ = double crochet (dc)
- ⊙ = magic ring



FINISHING

Using yarn tails, sew Eyes and Mouth onto Head as shown in photo.

With B, embroider Nose by forming an upside-down V between Eyes and Mouth using Straight Stitch. With B, embroider Mouth by embroidering 3 vertical lines using Straight Stitch evenly across length of Mouth.

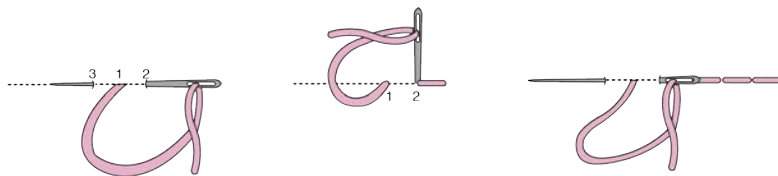
Join Head: With WS of Head pieces tog, join A with sl st through both thicknesses and work 1 rnd of sc around outer edges to join pieces leaving 8" [20.5 cm] opening to insert stuffing. Stuff Head and complete joining rnd. Fasten off.

Torso: Using yarn tail, sew Spine onto Front piece of Torso as shown in photo.

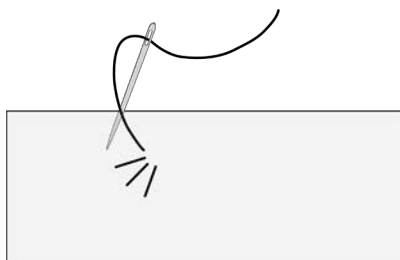
With length of B, embroider 3 horizontal lines using Back Stitch across Spine as shown in photo.

Join Torso: With WS of Torso pieces tog, join A with sl st through both thicknesses and work 1 rnd of sc around outer edges to join pieces leaving 8" [20.5 cm] opening at bottom edge to insert stuffing. Stuff Torso and complete joining rnd. Take care to stuff neck firmly. Fasten off.

Limbs: Tie knots in each Limb as shown in photo to mimic elbow and knee joints. Using yarn tails, sew Limbs to Torso as shown in photo.



BACK STITCH DIAGRAM



STRAIGHT STITCH DIAGRAM

