



Version 1

Version 2

## MATERIALS

**Red Heart® Super Saver™** (7 oz/198 g; 364 yds/333 m)

### Version 1

**Color A** Pretty 'n' Pink (0722)      **1 ball or 18 yds/17 m**

**Color B** Pumpkin (0254)              **1 ball or 11 yds/10 m**

**Color C** Café Latte (0360)          **1 ball or 7 yds/6.5 m**

### Version 2

**Contrast A** Spring Green (0672)   **1 ball or 18 yds/17 m**

**Contrast B** Pumpkin (0254)        **1 ball or 11 yds/10 m**

**Contrast C** Café Latte (0360)      **1 ball or 7 yds/6.5 m**

Size U.S. H/8 (5 mm) Susan Bates® Silvalume® crochet hook **or size needed to obtain gauge.** Susan Bates® steel yarn needle.



CROCHET | SKILL LEVEL: **EASY**

## ABBREVIATIONS

**Approx** = Approximately

**Beg** = Beginning

**Bobble** = (Yoh and draw up a loop. Yoh and draw through 2 loops on hook) 4 times all in next stitch. Yoh and draw through all 5 loops on hook.

**Ch** = Chain(s)

**Hdc** = Half double crochet

**Rep** = Repeat

**Rnd(s)** = Round(s)

**Sc** = Single crochet

**Sl st** = Slip stitch

**St(s)** = Stitch(es)

**WS** = Wrong side

**Yoh** = Yarn over hook

## MEASUREMENT

Approx 9" [23 cm] in circumference x 3" [7.5 cm] wide.

## GAUGE

13 sc and 14 rows = 4" [10 cm].

## INSTRUCTIONS

See diagram on page 2.

With A, ch 28. Join with sl st in 1st ch, being careful not to twist ch.

**1st rnd:** Ch 1. 1 sc in each ch around. Join with sl st to first sc. 28 sc.

**Note:** Carry yarn not in use loosely across WS of work. To change color, work to last loops on hook, yoh with new color and proceed.

**2nd rnd:** Ch 1 (**does not** count as st). 1 hdc in first sc. \*With B, Bobble in next sc. With A, ch 1. 1 hdc in each of next 3 sc. Rep from \* to last 3 sc. With B, Bobble in next sc. 1 hdc in each of last 2 sc. Join with sl st to first hdc.

**3rd rnd:** With A, ch 1. \*1 sc in next hdc. With C, 1 hdc between 2nd and 3rd 'legs' of next Bobble. With A, 1 sc in each of next 2 hdc. Rep from \* around. Join with sl st to first sc.

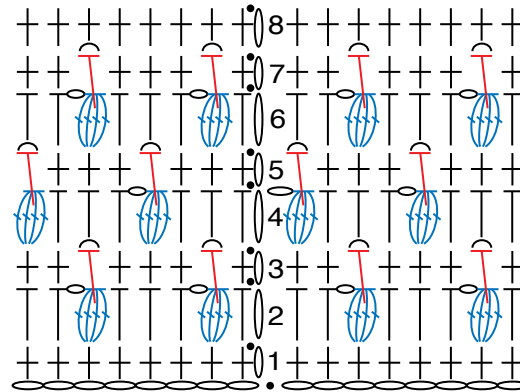
**4th rnd:** Ch 1 (**does not** count as st). \*With A, 1 hdc in next sc. 1 hdc in back loop only of next hdc. 1 hdc in next sc. With B, Bobble in next sc. With A, ch 1. Rep from \* around. Join with sl st to first hdc.

**5th rnd:** With A, ch 1. \*1 sc in each of next 3 hdc. With C, 1 hdc between 2nd and 3rd 'legs' of next Bobble. With A, ch 1. Rep from \* around.

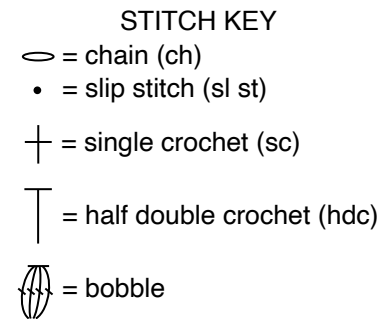
**6th rnd:** With A, ch 1 (**does not** count as st). 1 hdc in first sc. \*With B, Bobble in next sc. With A, ch 1. 1 hdc in next sc. 1 hdc in back loop only of next hdc. 1 hdc in next sc. Rep from \* to last 3 sc. With B, Bobble in next sc. 1 hdc in next sc. 1 hdc in back loop only of next hdc. Join with sl st to first hdc.

**7th rnd:** As 3rd rnd.

**8th rnd:** With A, ch 1. 1 sc in first sc. \*1 sc in back loop only of next hdc. 1 sc in each of next 3 sc. Rep from \* around, ending with 1 sc in each of last 2 sc. Join with sl st to first sc. Fasten off. Weave in ends.



REDUCED SAMPLE OF PATTERN



Version 1



Version 2

