



CROCHET | SKILL LEVEL: INTERMEDIATE



MATERIALS

Red Heart® Super Saver® O'Go™ (Solids: 7 oz/198 g; 364 yds/333 m; Prints: 5 oz/141 g; 236 yds/215 m)

Size U.S 7 (4.5 mm) crochet hook **or size needed to obtain gauge.** Yarn needle. Cardboard. Spray adhesive or hot glue.

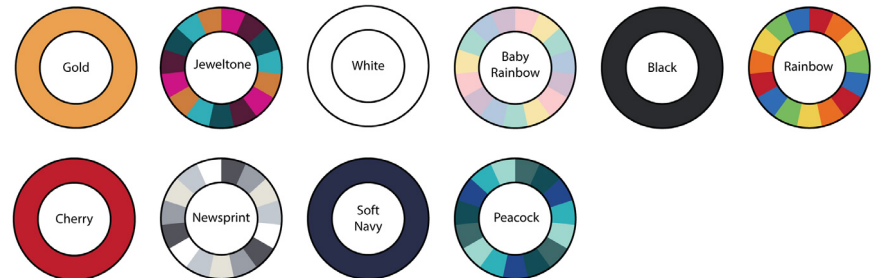
ABBREVIATIONS

Approx = Approximately
Beg = Begin(ning)(s)
Ch = Chain(s)
Cont = Continue

Bobble = (Yoh and draw up a loop. Yoh and draw through 2 loops on hook) 5 times in indicated stitch. Yoh and draw through all 6 loops on hook.

Rnd = Round
RS = Right side
Sc = Single crochet
Sl st = Slip stitch
St(s) = Stitch(es)
WS = Wrong side
Yoh = Yarn over hook

Version 1	
Main Color (MC) Gold (7160)	1 O'Go
Contrast A Jeweltone (7195)	1 O'Go
Version 2	
Main Color (MC) White (7100)	1 O'Go
Contrast A Baby Rainbow (7175)	1 O'Go
Version 3	
Main Color (MC) Black (7120)	1 O'Go
Contrast A Rainbow (7192)	1 O'Go
Version 4	
Main Color (MC) Cherry (7190)	1 O'Go
Contrast A Newsprint (7124)	1 O'Go
Version 5	
Main Color (MC) Soft Navy (7180)	1 O'Go
Contrast A Peacock (7155)	1 O'Go



MEASUREMENTS

Approx 8¾" x 9¼" [22 x 23.5 cm].

GAUGE

14 sc and 17 rows = 4" [10 cm].

INSTRUCTIONS

Notes:

- When joining new color, work to last loops on hook. Draw new color through last loops, then proceed in new color.
- Carry color when not in use loosely across top of row and work sts around it to avoid stranding.
- Ch 1 at beg of each row.
- To begin working with the O'Go format, carefully cut plastic tie where the ends.
- Pull tie to remove.
- Start crocheting!

WALL HANGING

With MC, ch 30.

1st row: (RS). 1 sc in 2nd ch from hook. 1 sc in each ch to end of chain. Turn. 29 sc.

2nd to 6th rows: Ch 1. 1 sc in each sc to end of row. Turn.

7th row: Ch 1. 1 sc in each of first 14 sts. With A, Bobble. With MC, 1 sc in each st to end of row. Turn.

8th row: Ch 1. 1 sc in each of first 12 sts. With A, 1 sc in each of next 5 sts. With MC, 1 sc in each st to end of row. Turn.

9th row: Ch 1. 1 sc in each of first 11 sts. With A, Bobble. (1 sc in next st. Bobble) 3 times. With MC, 1 sc in each st to end of row. Turn.

First 9 rows of Chart are complete. Cont working *Chart*, reading RS rows from **right to left** and WS rows from **left to right**, until all 37 rows of Chart are complete.

Do not fasten off. **Do not** turn at end of last row.

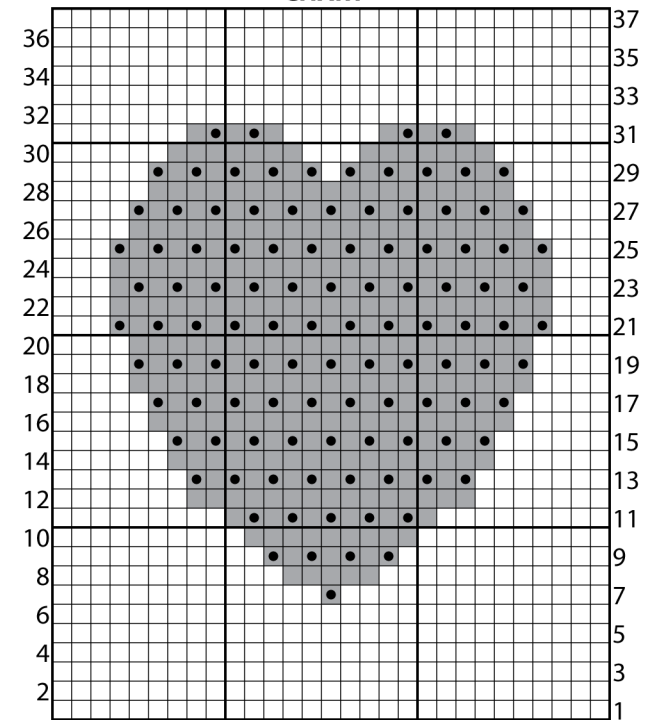
Edging: 1st rnd: (RS). With MC, ch 1. Work sc evenly around edges of Wall Hanging, working 3 sc in each corner. Join with sl st to first sc. Fasten off.

FINISHING

Trace Wall Hanging onto cardboard and cut out. With spray adhesive or hot glue, glue cardboard to WS of Wall Hanging. Cut and glue lengths of MC to cover outer edges of Wall Hanging as needed.

Cut length of MC 12" [30.5 cm] long. Tie each end to top of Wall Hanging for hanging cord.

CHART



Start Here

Key

- = With MC, sc
- = With A, sc
- = With A, Bobble