



Personalized Filet Crochet

Create a thread crochet table runner or wall hanging with any letters you wish. This lacy piece is done with the filet crochet technique using a chart to plan your design.

Designed by Carlotta Craig.

Runner measures 26¾" wide x 15¼" deep.

RED HEART® Classic Crochet Thread size 10: 3 balls 420 Cream.

Crochet Hook: 1.5 mm [US 7]

GAUGE: 23 sts = 2"; 9 rows = 2" in dc. **CHECK YOUR GAUGE.** Use any size needles/hook to obtain the gauge given.

NOTE:

We have included a charted alphabet (both upper and lower case letters) to plan your personalized design. Using graph paper, position your letters and border as desired before you begin.

HOW TO READ FILET PATTERN CHART:

Each square in your chart represents either a "block" (●) or a "space" (open square).

For "block" = dc in next dc, dc in next 2 sts or ch-2 space, dc in next dc.

For "space" = dc, ch 2, skip next 2 sts, dc.

The dc at the end of each square also counts as the first dc of the next block or space. For example, a block followed by a space = dc in next 4 sts, ch 2, skip next 2 sts, dc in next dc.

When following chart, odd number rows are worked right to left and even number rows are worked from left to right.

RUNNER

Starting at left side, ch 180.

Row 1 (Right Side): Dc in 4th ch from hook, dc in each ch across (59 blocks made), turn.

Row 2: Ch 3 (counts as dc here and throughout), dc in next 3 dc (block made), *ch 2, skip next 2 sts, dc in next dc; repeat from * 56 times, dc in last 3 dc (57 spaces with 1 block on each end), turn.

Rows 3-125: Continue to work in blocks and spaces following chart. Fasten off.

RED HEART® Classic Crochet Thread, Size 10, Art. 144 available Bedspread weight White & Natural 350 yd (320m), solids 300 yd (274) balls.

ABBREVIATIONS: ch = chain; dc = double crochet; st(s) = stitch(es); * or ** = repeat whatever follows the * or ** as indicated.



PERSONALIZED FILET CROCHET | CROCHET

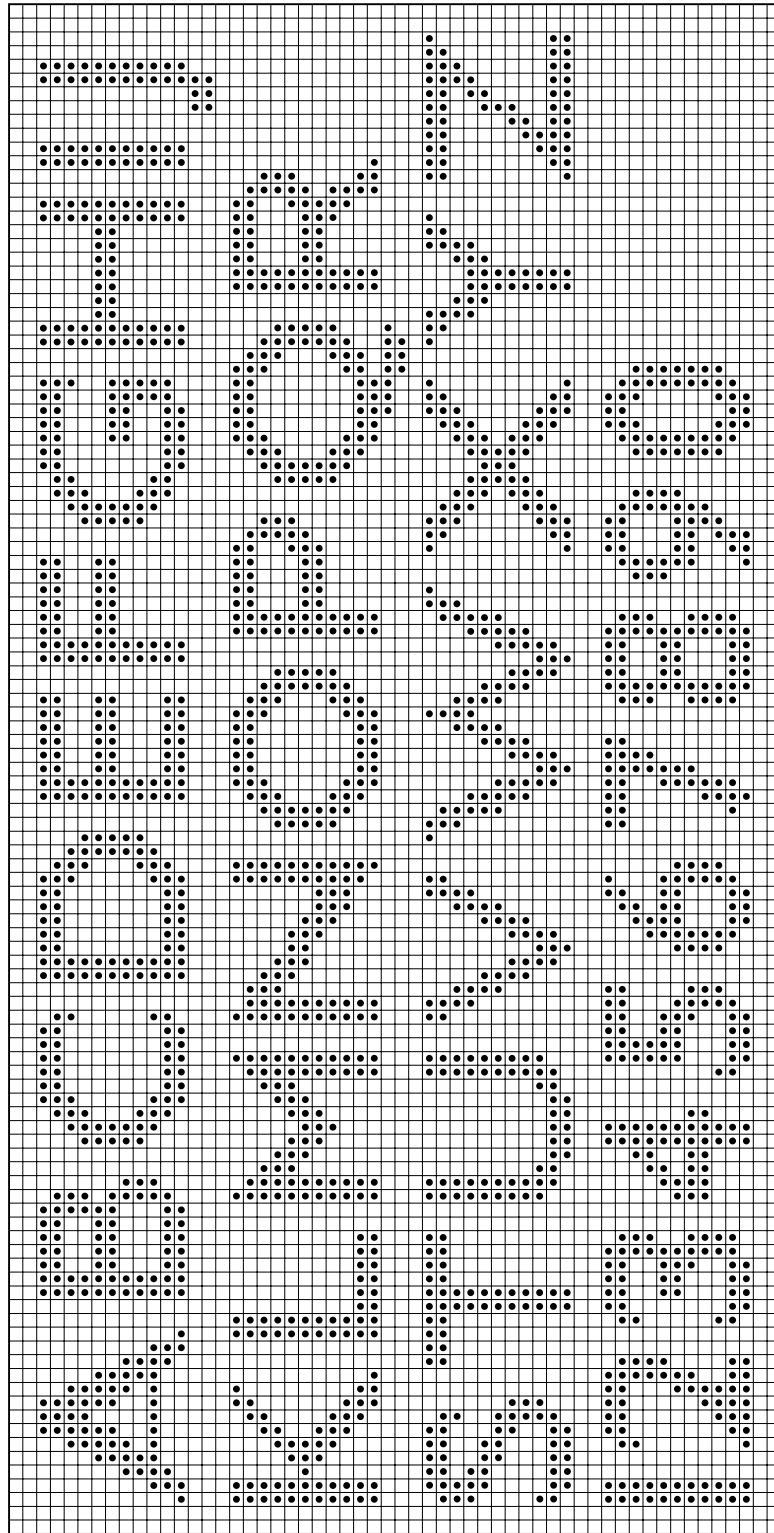
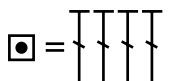
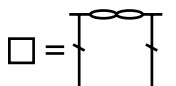


CHART KEY





PERSONALIZED FILET CROCHET | CROCHET

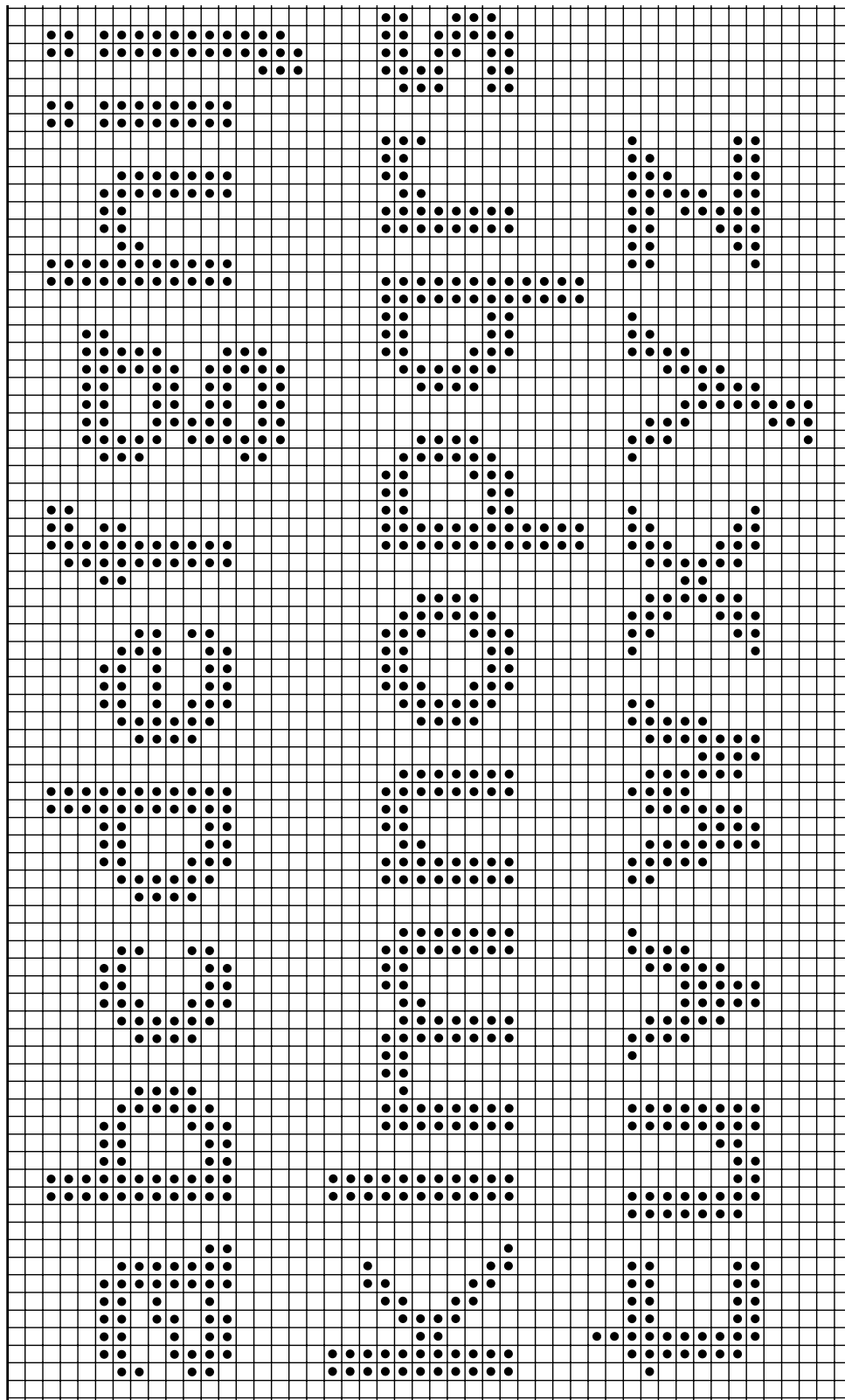
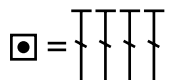
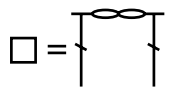


CHART KEY





PERSONALIZED FILET CROCHET | CROCHET

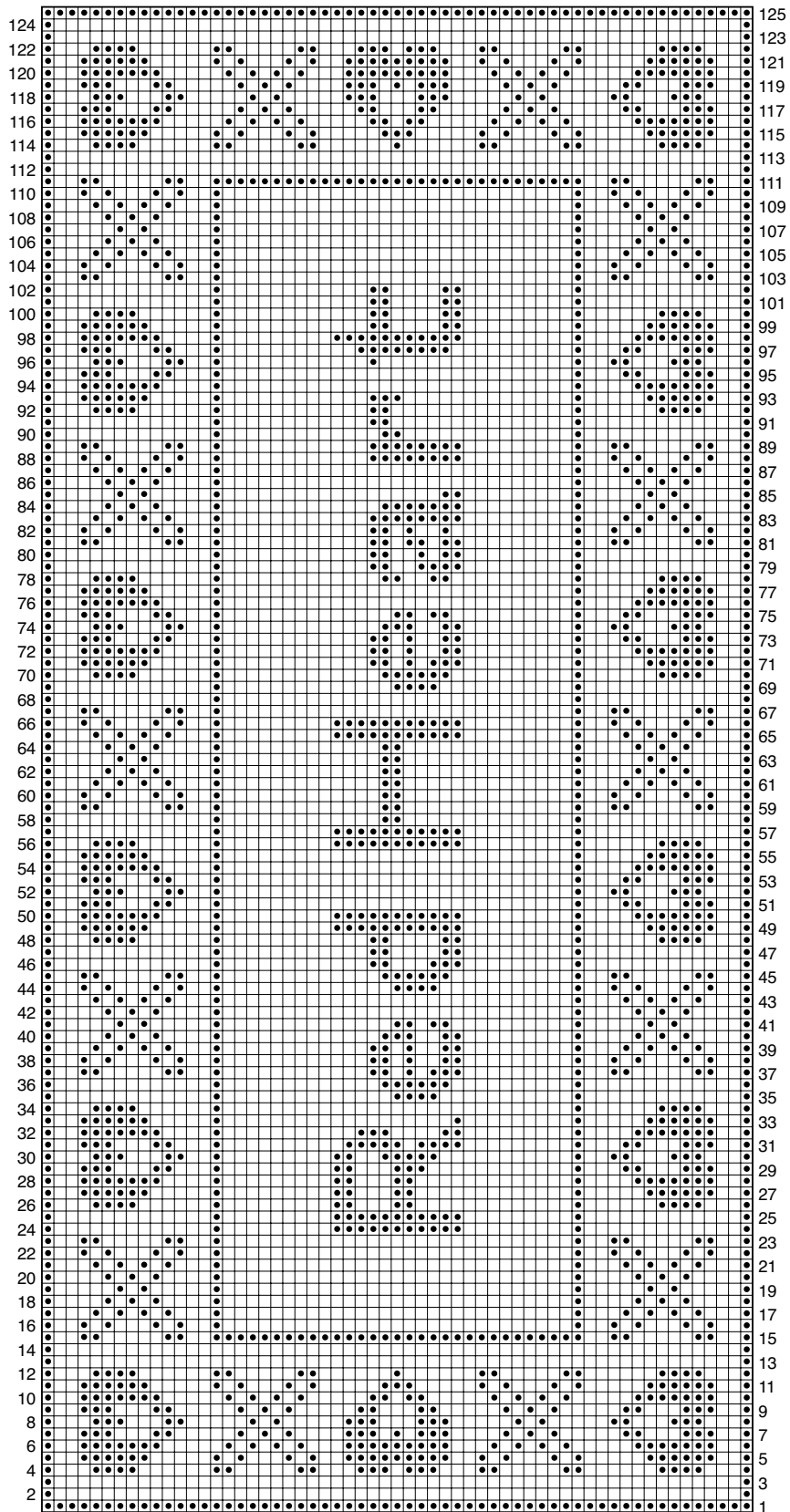


CHART KEY

