

## VERSION 1



## VERSION 2



### MATERIALS

**Red Heart® Super Saver® Super Craft Kit™** Set includes 12 balls (50 g/1.7 oz each; 600 g/21 oz total), yardage (85 m/93 yds each; 1020 m/1116 yds total)

### VERSION 1

<b>Contrast A</b> Royal	<b>1 ball or 42 yds/38 m</b>
<b>Contrast B</b> Shocking Pink	<b>1 ball or 23 yds/21 m</b>
<b>Contrast C</b> Cherry Red	<b>1 ball or 15 yds/14 m</b>
<b>Contrast D</b> Lavender	<b>1 ball or 27 yds/ 25 m</b>

### VERSION 2

<b>Contrast A</b> Grey Heather	<b>1 ball or 42 yds/38 m</b>
<b>Contrast B</b> Soft White	<b>1 ball or 23 yds/21 m</b>
<b>Contrast C</b> Black	<b>1 ball or 15 yds/14 m</b>
<b>Contrast D</b> Café Latte	<b>1 ball or 27 yds/ 25 m</b>

Size U.S. 7 [4.5 mm] Susan Bates® Silvalume® crochet hook **or size needed to obtain gauge.** Susan Bates® yarn needle.



CROCHET | SKILL LEVEL: **EASY**

### ABBREVIATIONS

<b>Approx</b> = Approximately	<b>Rem</b> = Remaining	<b>Sp(s)</b> = Space(s)
<b>Beg</b> = Beginning	<b>Rep</b> = Repeat	<b>St(s)</b> = Stitch(es)
<b>Ch</b> = Chain(s)	<b>Rnd(s)</b> = Round(s)	<b>Tog</b> = Together
<b>Dc</b> = Double crochet	<b>RS</b> = Right side	<b>WS</b> = Wrong side
	<b>Sl st</b> = Slip stitch	<b>Yoh</b> = Yarn over hook

### MEASUREMENT

Approx 5" [12.5 cm] cube.

### GAUGES

14 dc and 8 rows = 4" [10 cm].

Motif = Approx 5" [12.5 cm] square

### INSTRUCTIONS

#### Notes:

- Ch 3 at beg of rnd counts as dc.
- Ch 6 at beg of rnd counts as dc and ch-3 sp.
- To change colors, work to last 2 loops on hook of first color, yoh with new color and proceed.

#### PLAIN MOTIF (make 3)

See diagram on page 2

With B, ch 4. Join with sl st to first ch to form ring.

**1st rnd:** Ch 6. (3 dc in ring. Ch 3) 3 times. 2 dc in ring. Join with sl st in 3rd ch of ch-6. Fasten off.

**2nd rnd:** Join C with sl st in any ch-3 sp. Ch 6. 3 dc in same ch-3 sp. Ch 1. \*(3 dc. Ch 3. 3 dc) in next ch-3 sp. Ch 1. Rep from \* twice more. 2 dc in next ch-3 sp. Join with sl st in 3rd ch of ch-6. Fasten off.

**3rd rnd:** Join D with sl st in any ch-3 sp. Ch 6. 3 dc in same ch-3 sp. \*Ch 1. 3 dc in next ch-1 sp. Ch 1. (3 dc. Ch 3. 3 dc) in next ch-3 sp. Rep from \* twice more. Ch 1. 3 dc in next ch-1 sp. Ch 1. 2 dc in first ch-3 sp. Join with sl st in 3rd ch of ch-6. Fasten off.

**4th rnd:** Join A with sl st in any ch-3 sp. Ch 3. 4 dc in same ch-3 sp. \*(1 dc in each of next 3 dc. 1 dc in next ch-1 sp) twice. 1 dc in each of next 3 dc.\*\* 5 dc in next ch-3 sp. Rep from \* twice more, then from \* to \*\* once. Join with sl st in 3rd ch of ch-3. Fasten off. Weave in ends.

## HEART MOTIF (make 2)

With B, ch 4. Join with sl st to first ch to form ring.

**1st rnd:** Ch 6. (3 dc in ring. Ch 3) 3 times. 2 dc in ring. Join with sl st in 3rd ch of ch-6.

**2nd rnd:** Sl st in next ch-3 sp. Ch 6. 3 dc in same ch-3 sp. Ch 1. \*(3 dc. Ch 3. 3 dc) in next ch-3 sp. Ch 1. Rep from \* twice more. 2 dc in next ch-3 sp. Join with sl st in 3rd ch of ch-6.

**3rd rnd:** Sl st in next ch-3 sp. (Ch 3. 2 dc. Ch 3. 3 dc) in same ch-3 sp. Ch 1. 3 dc in next ch-1 sp, changing to A in last dc. With A, ch 1. (3 dc. Ch 3. 3 dc) in next ch-3 sp. With B, ch 1 to change color. With B, 3 dc in next ch-1 sp, changing to A in last dc. With A, ch 1. (3 dc. Ch 3. 3 dc) in next ch-3 sp. With B, ch 1 to change color. With B, (3 dc in next ch-1 sp. Ch 1. (3 dc. Ch 3. 3 dc) in next ch-3 sp, changing to A in last dc. With A, ch 1. 3 dc in next ch-1 sp. Ch 1. Join with sl st to top of ch 3. Break B.

**4th rnd:** With A, ch 3. 1 dc in each of the next 2 dc. 5 dc in next ch-3 sp. \*(1 dc in each of next 3 dc. 1 dc in next ch-1 sp) twice. \*\* 1 dc in each of next 3 dc. 5 dc in next ch-3 sp. Rep from \* twice more, then from \* to \*\* once. Join with sl st to 3rd ch of ch-3. Fasten off. Weave in ends.

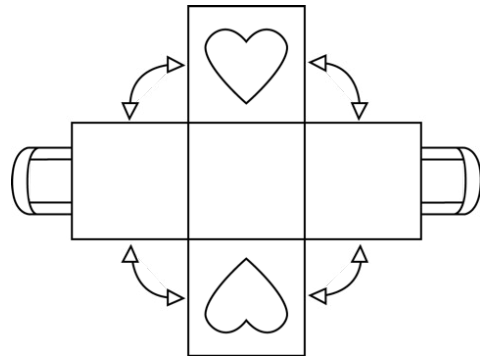
## HANDLES (make 2)

With D, ch 32, leaving a long end to attach to Basket.

**1st row:** 1 dc in 4th ch from hook (counts as 2 dc). 1 dc in each of next 28 ch. 30 dc. Fasten off leaving a long end to attach to Basket.

## Assembly

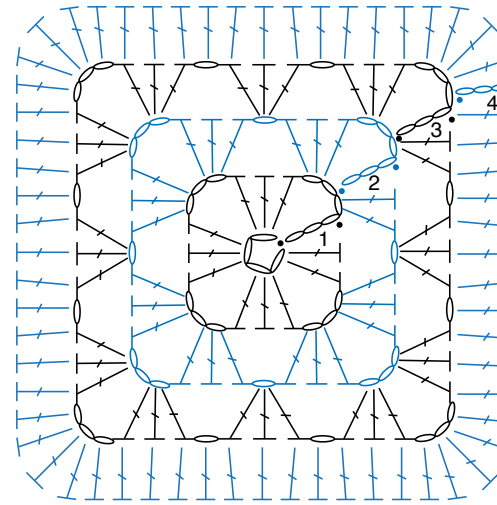
Place 2 Plain Motifs WS tog. With A, sl st across edge of both Motifs to join. Rep with 3rd Plain Motif to create a strip (see diagram). Fasten off. Weave in ends.



Place Heart Motif WS tog onto center Plain Motif, Heart point up and bumps down. With A, sl st across edge of both squares to join. Rep for 2nd Heart Motif on opposite side. (Note direction of Motifs on diagram). Fasten off. Weave in ends.

Fold up 4 outer Motifs tog and sl st along sides to form Basket. Fasten off and weave in ends.

Using long ends on Handles, sl st to top edge of 2 Plain Motifs, beg at first dc after ch-3 sp. Fasten off and weave in ends.



PLAIN MOTIF

## STITCH KEY

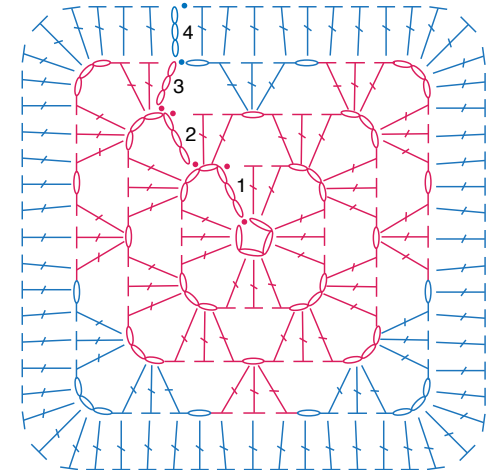
- = chain (ch)
- = slip stitch (sl st)
- ⌋ = double crochet (dc)



VERSION 1



VERSION 2



HEART MOTIF