



CROCHET | SKILL LEVEL: **EASY**

## ABBREVIATIONS

**Approx** = Approximately

**Beg** = Begin(ning)

**Ch** = Chain(s)

**Cont** = Continue

**Dc** = Double crochet

**Dec** = Decrease

**Rem** = Remains

**Rep** = Repeat

**Rnd(s)** = Round(s)

**RS** = Right side

**Sl st(s)** = Slip stitch(es)

**Sp(s)** = Space(s)

**St(s)** = Stitch(es)

**Tog** = Together

**WS** = Wrong side

**Yoh** = Yarn over hook

## MEASUREMENTS

Approx 54" wide x 60" long [137 x 152.5 cm]

## GAUGES

5 dc blocks = 4" [10 cm] in pattern.

Motif = Approx 6" [15 cm] square.

## INSTRUCTIONS

### MOTIF (make 34)

### Notes:

- Motifs begin with Color 1 (shortest color rep) from center of pull-skein, leaving a 4" [10 cm] tail to weave in.

- Each color aligns with 1 round (rnd) in the Motif with 5 colors in total. If too much color is left at end of rnd, pull back some stitches (sts) and slightly loosen gauge to re-work sts and finish at color change. If too little color is left, pull back some sts and slightly tighten gauge to re-work sts and finish at color change.
- When Motif is complete, cut yarn where Color 5 (longest color rep) ends, leaving a tail for weaving in. Begin next Motif with Color 1 and repeat 5 rnds for each Motif.

## MATERIALS

**Red Heart® Granny Square All in One** (8.8 oz/250 g; 417 yds/381 m)

**Contrast A Citrus Twist (2002)**      **3 balls (34 Granny Squares)**

**Red Heart® Super Saver®** (7 oz/198 g; 364 yds/333 m)

**Contrast B Gold (0321)**      **4 balls or 1580 yds/1445 m**

**Contrast C Shocking Pink (0718)**      **2 balls or 451 yds/412 m**

Size U.S. I/9 (5.5 mm) Susan Bates® Silvalume® crochet hook **or size needed to obtain gauge.** Susan Bates® yarn needle.

## Notes:

- Ch 3 at beg of rnd counts as dc.
- Ch 6 at beg of rnds counts as dc and ch-3 sp.
- Join all rnds with sl st to 3rd ch of ch-6 unless otherwise indicated.

With A, ch 4. Join with sl st to first ch to form ring.

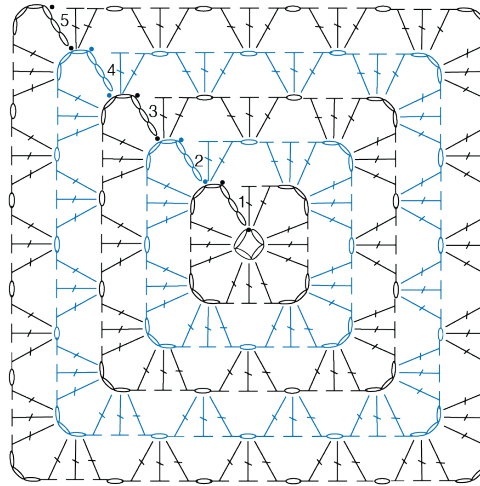
**1st rnd:** (RS). Ch 6. (3 dc. Ch 3) 3 times in ring. 2 dc in ring. Join.

**2nd rnd:** Sl st in ch-3 sp. Ch 6. 3 dc in same ch-3 sp. \*Ch 1. (3 dc. Ch 3. 3 dc) in next ch-3 sp. Rep from \* twice more. Ch 1. 2 dc in first ch-3 sp. Join.

**3rd rnd:** Sl st in ch-3 sp. Ch 6. 3 dc in same ch-3 sp. \*Ch 1. 3 dc in next ch-1 sp. Ch 1. (3 dc. Ch 3. 3 dc) in next ch-3 sp. Rep from \* twice more. Ch 1. 3 dc in last ch-1 sp. Ch 1. 2 dc in first ch-3 sp. Join.

**4th and 5th rnds:** Sl st in ch-3 sp. Ch 6. 3 dc in same ch-3 sp. \*(Ch 1. 3 dc) in each ch-1 sp to next ch-3 sp. Ch 1.\*\* (3 dc. Ch 3. 3 dc) in next ch-3 sp. Rep from \* twice more, then from \* to \*\* once. 2 dc in first ch-3 sp. Join. Fasten off.

## MOTIF DIAGRAM



## STITCH KEY

- = chain (ch)
- = slip stitch (sl st)
- ┆ = double crochet (dc)

## CORNER-TO-CORNER CENTER

### Notes:

- Center of Blanket is worked diagonally from corner to corner.
- Each square on Chart represents 1 block and should be worked in appropriate color.
- Wind small balls of colors to be used, one for each separate area of color in the design.
- Start new colors at appropriate points. To change color, work to last 2 loops on hook, yoh with new color. Pull through 2 loops on hook to complete st and proceed in new color.

With B, ch 6.

(See diagram on page 3 and Chart on page 4).

**1st row:** (RS). 1 dc in 4th ch from hook (counts as 2 dc). 1 dc in each of last 2 ch. Turn. 1 block made.

**2nd row:** Ch 6. 1 dc in 4th ch from hook. 1 dc in each of next 2 ch – beg block made. (Sl st . Ch 3. 3 dc) in next ch-3 sp – block made. Turn. 2 blocks complete.

**3rd row:** Beg block. \*Block in next ch-3 sp. Rep from \* to end of row. Turn. 3 blocks.

Keeping cont of color changes in Chart, rep last row until 56th row of Chart is complete. 56 blocks.

Keeping cont of Chart, proceed as follows to work sides even:

**57th row:** (RS). Beg block. \*Block in next ch-3 sp. Rep from \* to last ch-3 sp. Sl st in last ch-3 sp. (**Do not** make a block). Turn.

**58th row:** Sl st in each of first 3 dc. \*Block in next ch-3 sp. Rep from \* to end of row. Turn.

**59th to 64th rows:** As 57th and 58th rows 3 times more.

Keeping cont of Chart, proceed as follows to dec corner:

**65th row:** (RS). Sl st in each of first 3 dc. \*Block in next ch-3 sp. Rep from \* to last ch-3 sp. Sl st in last ch-3 sp. Turn.

Keeping cont of Chart, rep last row until 1 block rem.

Fasten off.

## FINISHING

**Note:** 1 side edge of Motif = 8 Blocks of Center.

Using B, sew Motifs tog into 4 Strips using whipstitch:

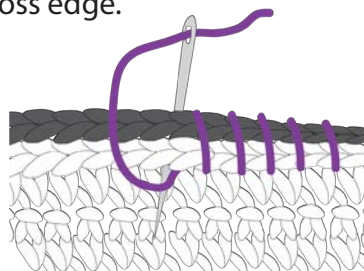
2 Strips - 7 Motifs each for top and bottom.

2 Strips - 10 Motifs each for sides.

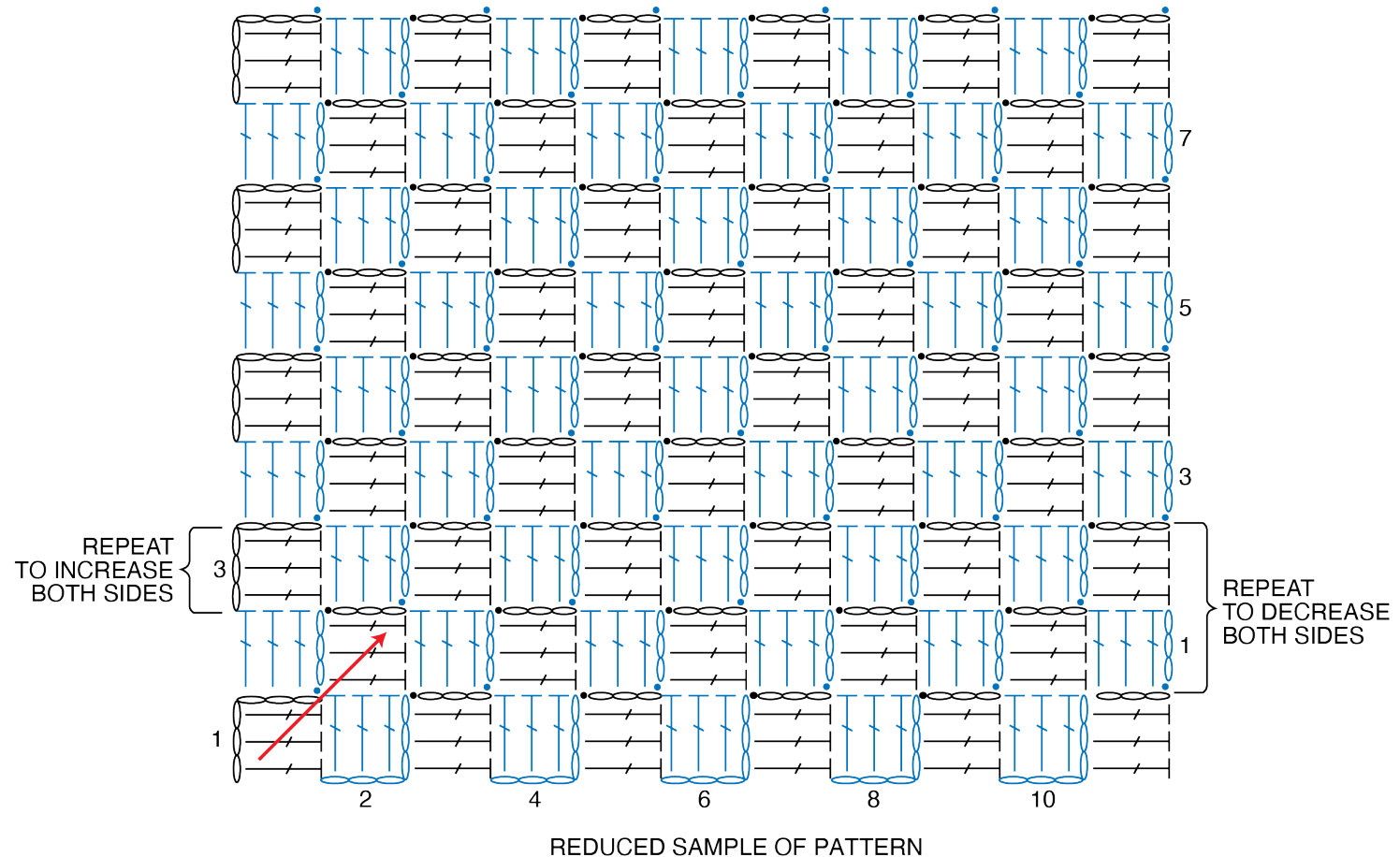
Using B, sew top and bottom Strips to Corner-to-Corner Center using whipstitch.

Using B, sew side Strips to either side of Corner-to-Corner Center using whipstitch.

With WS tog, sew through both pieces to secure beg of seam leaving a long end to weave in later. Insert needle from back to front through 2 strands on each piece. Bring needle around and insert it from back to front through next strands of both pieces. Repeat across edge.

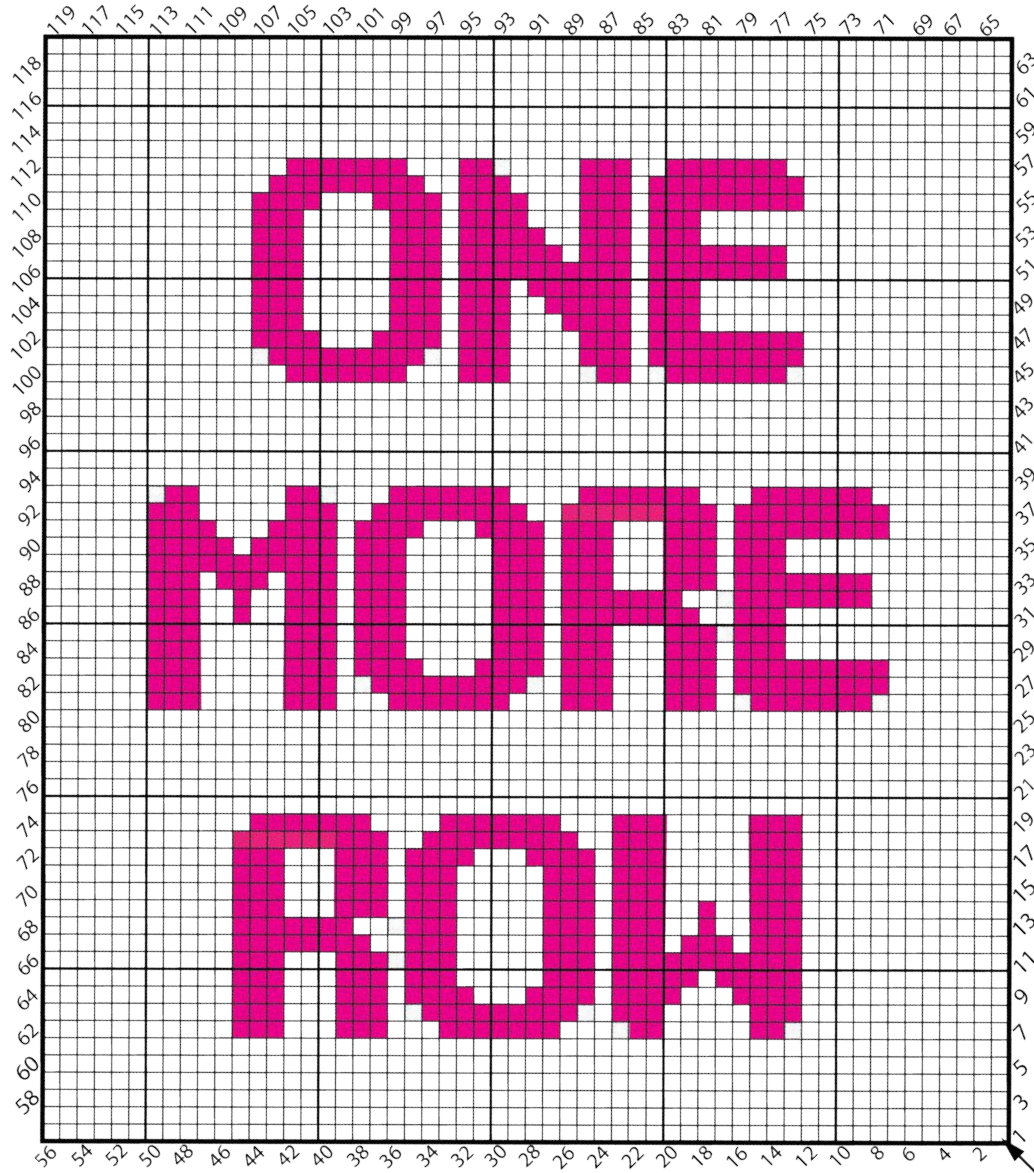


WHIPSTITCH DIAGRAM



**STITCH KEY**

- = chain (ch)
- = slip stitch (sl st)
- ⌋ = double crochet (dc)



START HERE  
Blanket is worked diagonally

Key

- = Contrast B
- = Contrast C