



CROCHET | SKILL LEVEL: EASY

ABBREVIATIONS

Approx =	Pat = Pattern	Scbl = Single crochet
Approximately	Rem = Remaining	in back loop only
Beg = Begin(ning)(s)	Rep = Repeat	Sl st = Slip stitch
Ch = Chain(s)	RS = Right side	Sp(s) = Space(s)
Cont = Continue(ity)	Sc = Single crochet	St(s) = Stitch(es)
Dc = Double crochet		WS = Wrong side

MEASUREMENTS

Approx 49" x 54" [124.5 x 137 cm].

GAUGES

12 sc and 13 rows = 4" [10 cm].

13 sts and 8.5 rows = 4" [10 cm] in Mesh Pat.

Stripe Pat

With B – 4 rows.

With D – 2 rows.

With A – 4 rows.

With C – 2 rows.

These 12 rows form Stripe Pat.

INSTRUCTIONS

Notes:

- Ch 3 at beg of rows counts as dc.
- To change color, work to last 2 loops on hook and draw new color through last 2 loops, then proceed in new color.
- Carry A and B, when not in use, up side edge of work.

BLANKET

With B, ch 149.

1st row: (RS). 1 dc in 4th ch from hook (counts as 2 dc). *Ch 1. Skip next ch. 1 dc in next ch. Rep from * to last ch. 1 dc in last ch. Turn. 147 sts (72 ch-1 sps).

2nd row: Ch 3. *1 dc in next dc. Ch 1. Skip next ch-1 sp. Rep from * to last 2 dc. 1 dc in each of last 2 dc. Turn.

Last row forms Mesh Pat.

First 2 rows of Stripe Pat are complete. See diagram on page 2.

MATERIALS

Red Heart® Super Saver® (7 oz/198 g; 364 yds/333 m)

Contrast A Real Teal (0656) **2 balls or 575 yds/520 m**

Contrast B Soft White (0316) **3 balls or 855 yds/775 m**

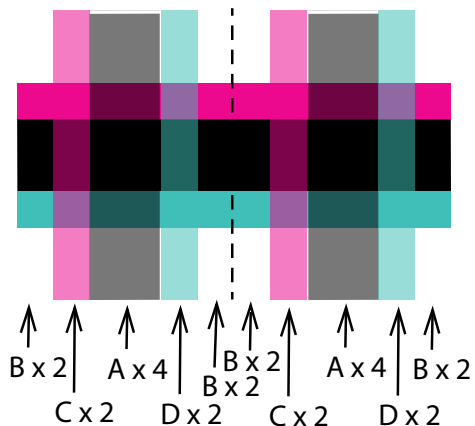
Contrast C Shocking Pink (0718) **1 ball or 364 yds/333 m**

Contrast D Aruba Sea (0505) **2 balls or 465 yds/420 m**

Size U.S. I/9 (5.5 mm) Susan Bates® Silvalume® crochet hook **or size needed to obtain gauge.** Susan Bates® yarn needle.

Cont in Mesh Pat AT SAME TIME cont in Stripe Pat until Blanket measures approx 52" [132 cm], ending on a WS row. Fasten off.

Surface Chain sts: 1st vertical row: With RS of Blanket facing, beg at bottom left corner, join Color with sl st to first ch-1 sp of foundation row. Pull loop to maintain length of first row. Working vertically, insert hook in corresponding ch-1 sp of next row. Yoh and draw up a loop – first ch made. Work in chains to last row of Blanket. Fasten off. Rep for rem vertical rows, changing Color in the following sequence: (B – 2 rows. C – 2 rows. A – 4 rows. D – 2 rows. B – 2 rows) 6 times across Blanket.



FINISHING

Pin Blanket on a flat surface to measurements. Cover with a damp cloth leaving cloth to dry.

Edging: 1st rnd: (RS). Join B with sl st to top right corner. Ch 1. Work in sc evenly around having (1 sc. Ch 1. 1 sc) in corners. Join with sl st to first sc.

2nd rnd: Ch 1. 1 scbl in each sc having (1 sc. Ch 1. 1 sc) in corner ch-1 sp. Join C with sl st to first sc.

Do not break B.

3rd and 4th rnds: With C, rep last rnd twice. Join A. **Do not** break C.

5th rnd: With A, rep last rnd once.

6th and 7th rnds: With C, rep last rnd twice.

8th and 9th rnds: With B, rep last rnd twice.

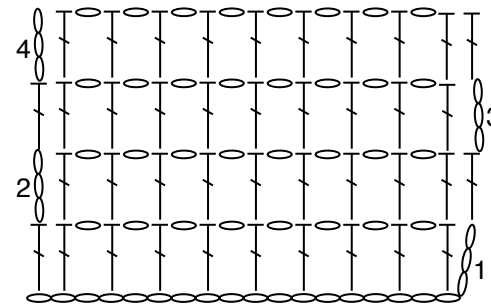
10th and 11th rnds: With D, rep last rnd twice.

12th rnd: With A, rep last rnd once.

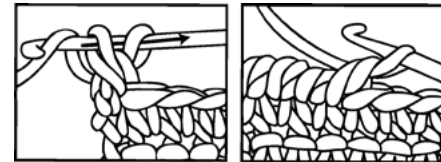
13th and 14th rnds: With D, rep last rnd twice.

15th rnd: With B, rep last rnd once. **Do not** fasten off.

16th rnd: With B, ch 1. Working from **left to right**, instead of from **right to left**, as usual, work 1 reverse sc in each sc around. Join with sl st to first sc. Fasten off.



REDUCED SAMPLE OF BLANKET



REVERSE SC

