



MATERIALS

Red Heart® Super Saver® (7 oz/198 g; 364 yds/333 m)

Contrast A Shocking Pink (0718) **2 balls or 675 yds/617.5 m**

Contrast B Pumpkin (0254) **2 balls or 715 yds/654 m**

Contrast C Aran (0313) **3 balls or 873 yds/798.5 m**

Contrast D Minty (0520) **2 balls or 495 yds/453 m**

Contrast E Spring Green (0672) **2 balls or 450 yds/411.5 m**

Size U.S. 1/9 (5.5 mm) Susan Bates® Silvalume® crochet hook **or size needed to obtain gauge.** Susan Bates® yarn needle. Piece of cardboard 6" [15 cm] wide for tassels.



CROCHET | SKILL LEVEL: INTERMEDIATE

ABBREVIATIONS

Alt = Alternate(ing)

Approx =
Approximately

Ch = Chain(s)

Hdc = Half double
crochet

Rem = Remain(ing)

Rep = Repeat

Rnd = Round

RS = Right side

Sc = Single crochet

Sc2tog = Draw up a
loop in each of next
2 sc. Yoh and draw
through all 3 loops
on hook.

Sl st = Slip stitch

Sp(s) = Space(s)

St(s) = Stitch(es)

Tog = Together

WS = Wrong side

Yoh = Yarn over hook

MEASUREMENTS

Approx 50 x 61½ [127 x 156 cm],
excluding tassels.

GAUGES

12 sc and 15 rows = 4" [10 cm].

Motif = 5½" [13.5 cm] across;
8½" [21.5 cm] top to bottom
points.

INSTRUCTIONS

DIAMOND MOTIF (make 28 each
with A and B, and 27 with C)

Ch 2.

****1st row:** (RS). 1 sc in 2nd ch from
hook. Turn. 1 sc.

2nd row: Ch 1. 2 sc in first sc. Turn.
2 sc.

3rd and alt rows: Ch 1. 1 sc in
each sc to end of row. Turn.

4th row: Ch 1. 2 sc in each sc to
end of row. Turn. 4 sc.

**6th, 8th, 10th, 12th, 14th and
16th rows:** Ch 1. 2 sc in first sc. 1 sc
in each sc to last sc. 2 sc in last sc.
Turn. 16 sc after 16th row.

**18th, 20th, 22nd, 24th, 26th and
28th rows:** Ch 1. Sc2tog. 1 sc in
each sc to last 2 sc. Sc2tog. Turn.
4 sts after 28th row.

30th row: Ch 1. (Sc2tog) twice.
Turn. 2 sts.

32nd row: Sc2tog.
Fasten off.**

Finishing Diamond Motifs Made in C:

With B, and following diagram on
page 3, surface sl st star motif.

TWO-TONE DIAMOND MOTIF

(make 27 with D as Color 1 and E as Color 2)

With Color 1, ch 2.

Rep from ** to ** as given for Diamond Motif while working Chart on page 3, noting each square of chart is equal to 1 sc and reading RS rows from **right to left** and WS rows from **left to right**. Carry Color 1 when not in use across top of previous row and work sts around it.

TOP & BOTTOM TRIANGLE MOTIFS

(make 9 each with C and D)

Ch 2.

1st row: (RS). 1 sc in 2nd ch from hook. Turn. 1 sc.

2nd row: Ch 1. 2 sc in first sc. Turn. 2 sc.

3rd and alt rows: Ch 1. 1 sc in each sc to end of row. Turn.

4th row: Ch 1. 2 sc in each sc to end of row. Turn. 4 sc.

6th, 8th, 10th, 12th, 14th and 16th rows: Ch 1. 2 sc in first sc. 1 sc in each sc to last sc. 2 sc in last sc. Turn. 16 sc after 16th row. Fasten off.

SIDE TRIANGLE MOTIFS

(make 7 with each A and B)

Ch 2.

1st row: (RS). 1 sc in 2nd ch from hook. Turn. 1 sc.

2nd and 3rd rows: Ch 1. 1 sc in first sc. Turn.

4th row: Ch 1. 2 sc in first sc. Turn. 2 sc.

5th and alt rows: Ch 1. 1 sc in each sc to end of row. Turn.

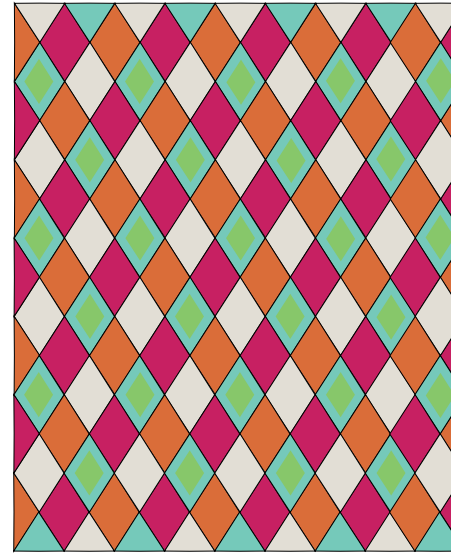
6th, 8th, 10th, 12th, 14th and 16th rows: Ch 1. 2 sc in first sc. 1 sc in each sc to end of row. Turn. 8 sc after 16th row.

18th, 20th, 22nd, 24th, 26th and 28th rows: Ch 1. Sc2tog. 1 sc in each sc to end of row. Turn. 2 sts after 28th row.

30th row: Ch 1. Sc2tog. Turn. 1 st.

32nd row: Ch 1. 1 sc in first sc. Fasten off.

Using Assembly Diagram, sew Motifs tog.



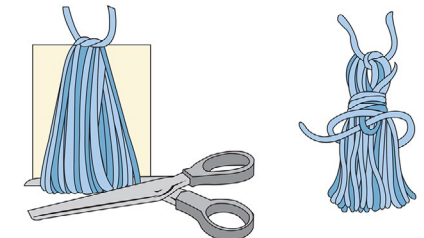
ASSEMBLY DIAGRAM

Blanket edging:

1st rnd: (RS). Join C with sl st to any corner sc. Ch 1. 3 sc in same sp as last sl st. 1 sc in each sc around, having 3 sc in corners. Join with sl st to first sc.

2nd rnd: Ch 2 (**does not** count as st). Work 1 hdc in each sc, having 3 hdc in every corner sc. Join with sl st to first hdc. Fasten off.

Tassels (make 4 with E) Cut a piece of cardboard 6" [15 cm] wide. Wind E around cardboard 120 times. Break yarn leaving a long end and thread end through needle. Slip needle through all loops and tie tightly. Remove cardboard and wind yarn tightly around loops 1" [2.5 cm] below fold. Fasten securely. Cut through rem loops and trim ends evenly. Sew 1 Tassel to each corner as shown in photo.



SURFACE SLIP STITCH

With B, work slip stitch diamond as follows:

With RS facing, beg with any line of star design, holding working yarn at WS, insert hook from RS to WS.

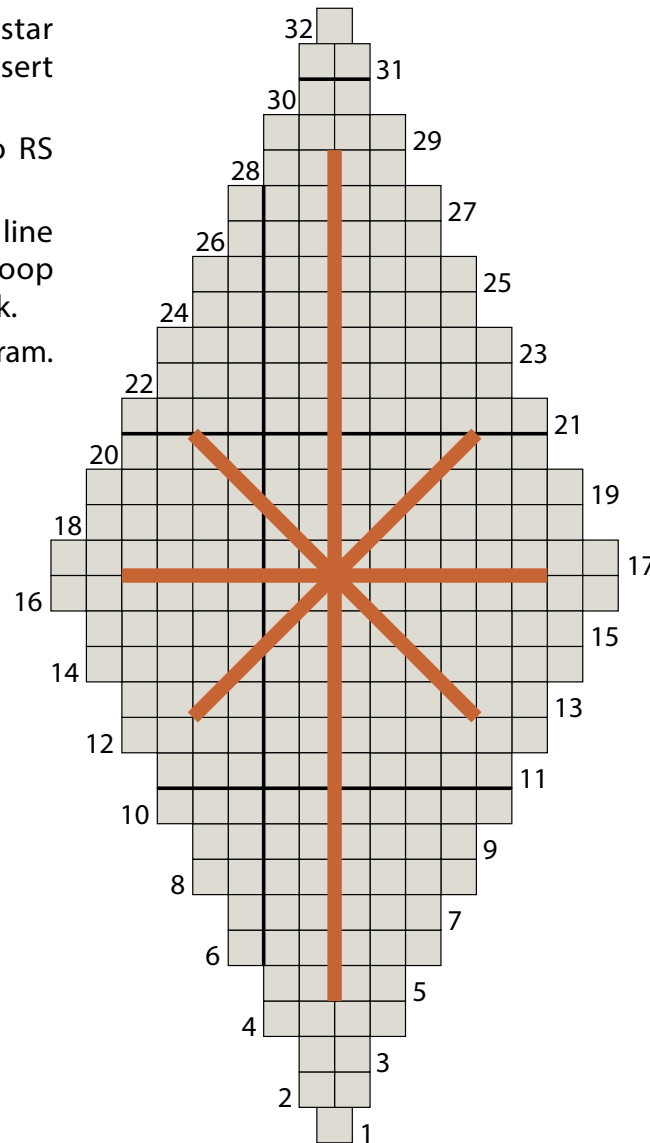
Yoh and draw loop through fabric to RS (1 loop on hook).

*Insert hook in next row or stitch along line indicated in diagram. Yoh and draw loop through fabric and through loop on hook.

Rep from * to end of line indicated in diagram. Fasten off.

Rep for each line of star design.

DIAMOND MOTIFS



TWO-TONE DIAMOND MOTIF

