



## MATERIALS

**Red Heart® Super Saver®** (5 oz/141 g; 260 yds/238 m)  
**Contrast A** Aran Fleck (4313) **6 balls or 1509 yds/1380 m**

**Red Heart® Super Saver®** (7 oz/198 g; 364 yds/333 m)  
**Contrast B** White (311) **2 balls or 446 yds/408 m**  
**Contrast C** Soft Navy (387) **2 balls or 728 yds/666 m**

Size U.S. I/9 (5.5 mm) Susan Bates® Silvalume® crochet hook **or size needed to obtain gauge.** Susan Bates® yarn needle. Cardboard 6" [15 cm] wide for Tassel.



CROCHET | SKILL LEVEL: **INTERMEDIATE**

## ABBREVIATIONS

**Approx** = Approximately  
**Beg** = Beginning  
**Ch** = Chain(s)  
**Cont** = Continue(ity)  
**Dc** = Double crochet  
**Dec** = Decrease  
**Rem** = Remain(ing)

**Rep** = Repeat  
**Rnd** = Round  
**RS** = Right side  
**Sl st** = Slip stitch  
**Sp(s)** = Space(s)  
**St(s)** = Stitch(es)  
**Yoh** = Yarn over hook

## MEASUREMENTS

Approx 47" x 57" [119.5 x 144.5 cm].

## GAUGE

12 dc and 7 rows = 4" [10 cm].

## INSTRUCTIONS

### Notes:

- Blanket is worked diagonally from corner to corner.
- When working from Chart, wind small balls of the colors to be used, one for each separate area of color in the design.
- Start new colors at appropriate points. To change color, work to last 2 loops on hook, yoh with new color. Pull through 2 loops on hook to complete st and proceed in new color.

## BLANKET

With A, ch 6. See stitch diagram on page 2 and Chart on page 3. Each square of chart represents 1 block.  
**1st row:** (RS). 1 dc in 4th ch from hook (counts as 2 dc). 1 dc in each of last 2 ch. Turn. 1 block made.  
**2nd row:** Ch 6. 1 dc in 4th ch from hook. 1 dc in each of next 2 ch – beg block made. (Sl st. Ch 3. 3 dc) in next ch-3 sp – block made. Turn. 2 blocks.  
**3rd row:** Beg block. \*Block in next ch-3 sp. Rep from \* to end of row. Turn. 3 blocks.

Keeping cont of color changes in Chart (each square on grid represents 1 block), rep last row until 60th row of chart is complete. 60 blocks.

Keeping cont of Chart, proceed as follows to work sides even:

**61st row:** Sl st in each of first 3 dc. \*Block in next ch-3 sp. Rep from \* to end of row. Turn.

**62nd row:** Beg block. \*Block in next ch-3 sp. Rep from \* to last ch-3 sp. Sl st in last ch-3 sp. (**Do not** make a block.) Turn.

**63rd to 72nd rows:** Rep last 2 rows 5 times more.

Keeping cont of Chart, proceed as follows to dec corner:

**73rd row:** Sl st in each of first 3 dc. \*Block in next ch-3 sp. Rep from \* to last ch-3 sp. Sl st in last ch-3 sp. (**Do not** make a block.) Turn.

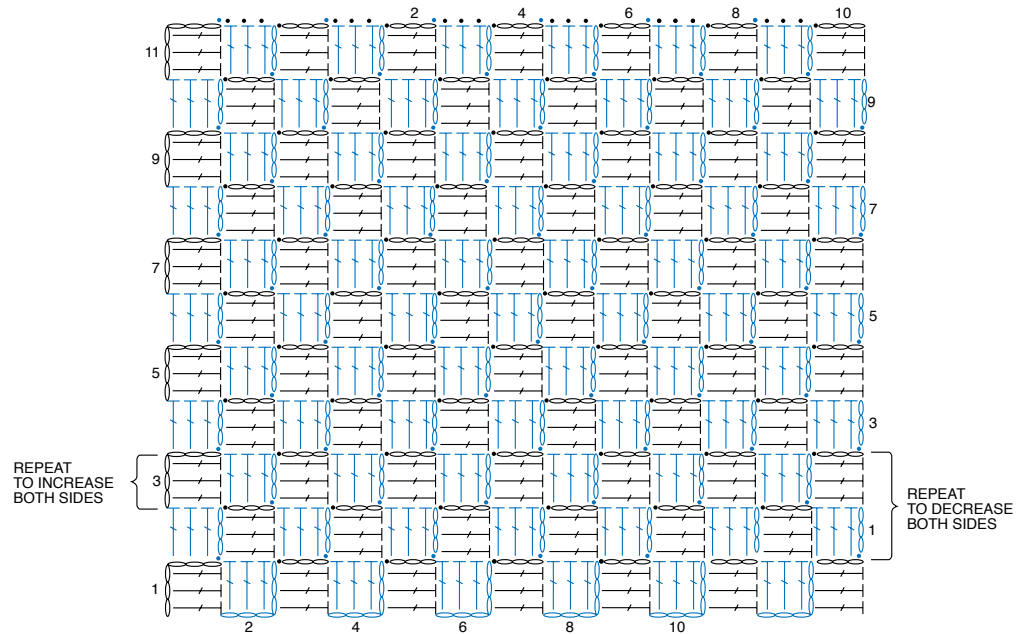
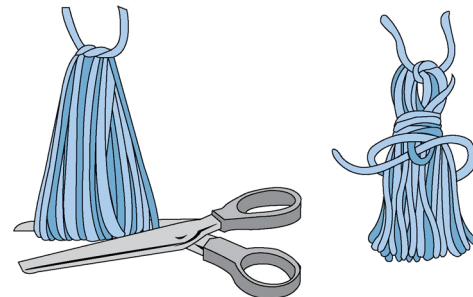
Keeping cont of Chart, rep last row until 1 block rem. Fasten off.

**Edging:** (RS). Join A with sl st between any 2 blocks along edge.

**1st rnd:** Ch 3. \*Sl st between next 2 blocks. Ch 3. Rep from \* around, working (Sl st. Ch 3. Sl st) in each corner. Join with sl st in first sl st. Turn.

**2nd rnd:** Sl st in next ch-3 sp. Ch 3 (counts as 1 dc). 2 dc in same sp as last sl st. \*3 dc in next ch-3 sp. Rep from \* around, working (3 dc. Ch 1. 3 dc) in corner ch-3 sp. Join with sl st to top of first ch-3. Fasten off.

**Tassel:** Wind C around a piece of cardboard 6" [15 cm] wide 20 times. Tie through loops securely at one end. Cut across other end. Wrap yarn 6 times around Tassel 1½" [4 cm] down from tied end. Fasten securely. With C, sew Tassel to front of Blanket (as shown in photo).



STITCH KEY

○ = chain (ch)

● = slip stitch (sl st)

⌋ = double crochet (dc)

