



CROCHET | SKILL LEVEL: EASY

ABBREVIATIONS

Approx = Approximately

Beg = Beginning

Ch = Chain(s)

Dc = Double crochet

Dc2tog = (Yoh and draw up a loop in next stitch. Yoh and draw through 2 loops on hook) twice. Yoh and draw through all 3 loops on hook

Dc2(4)togcl = (Yoh and draw up a loop. Yoh and draw through 2 loops on hook) 2 (4) times in indicated stitch. Yoh and draw through all loops on hook

Hdc = Half double crochet

Picot = Ch 6. Sl st in 5th ch from hook. Ch 1

PM = Place marker

Rep = Repeat

Rnd(s) = Round(s)

RS = Right side

Sc = Single crochet

Sc2tog = Draw up a loop in each of next 2 sc. Yoh and draw through all 3 loops on hook

Shell = [(Dc2togcl. Ch 2) twice. Dc2togcl] all in indicated space or stitch

Sl st = Slip stitch

Sp(s) = Space(s)

St(s) = Stitch(es)

Tch = Turning chain

Tog = Together

V-st = (1 dc. Ch 1. 1 dc) in in indicated stitch

WS = Wrong side

Yoh = Yarn over hook

MATERIALS

Red Heart® Super Saver Ombre™ (10 oz/283 g; 482 yds/440 m)

Deep Teal (3985)

4 balls

Size U.S. H/8 [5 mm] crochet hook **or size needed to obtain gauge.**
Yarn needle. 4 stitch markers.

MEASUREMENTS

Approx 41½ x 56" [105.5.5 x 142 cm].

GAUGE

13 sc and 15 rows = 4" [10 cm].

INSTRUCTIONS

Notes:

- Ch 2 at beg of row counts as hdc.
- Ch 3 at beg of row counts as dc.
- Ch 4 at beg of row counts as dc and ch-1 sp.
- Ch 5 at beg of row counts as dc and ch-2 sp.

- Ch 6 at beg of row counts as dc and ch-3 sp.
- Throw is constructed of 3 Motif Panels with a striped section between each Motif Panel. Each Motif Panel is made of 6 Motifs.
- Textured Sections join to adjoining Motif Panels on last row.

MOTIF PANEL (Make 3 Panels)

Motifs (make 18)

See diagram on page 5.

Ch 5. Join with sl st to first ch to form a ring.

1st rnd: Ch 5. (1 dc in ring. Ch 2) 7 times. Join with sl st to 3rd ch of beg ch-5. 8 dc. 8 ch-2 sps.

2nd rnd: Ch 3. 1 dc3cl in same sp as sl st (counts as dc4cl). *Ch 5. Skip ch-2 sp. 1 dc4cl in next dc. Rep from * around. Ch 5. Join with sl st to first st.

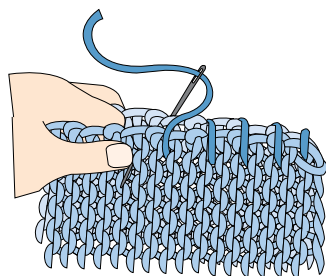
3rd rnd: Sl st to next ch 5-sp. Ch 1. *(3 sc. Ch 2. 3 sc) in ch-5 sp. Ch 1. Skip next dc4cl. Rep from * around. Join with sl st to first sc. 8 ch-2 sps and 8 ch-1 sps.

4th rnd: Sl st in each sc to next ch-2 sp. Ch 1. 1 sc in ch-2 sp. *Ch 4. 1 sc in next ch-1 sp. Ch 4. 1 sc in next ch-2 sp. Ch 4. (1 tr. Picot. 1 tr) in next ch-1 sp. Ch 4**. 1 sc in next ch-2 sp. Rep from * around ending at **. Join with sl st to first sc. 16 ch-4 sps.

5th rnd: Ch 1. 4 sc in each of next 3 ch-4 sps. *4 sc in corner ch-sp (formed by picot). PM in 2nd sc.** 4 sc in each of next 4 ch-4 sps. Rep from * around, ending last rep at **. 4 sc in last ch-4 sp. Join with sl st to first sc.

6th rnd: Ch 1. *1 sc in each sc across to marker. 2 sc in each of next 2 sc. Rep from * around. 1 sc in each sc around. Join with sl st to first sc. Fasten off.

With RS facing, whip stitch Motifs tog to form 3 Panels, each 6 Motifs long.



WHIP STITCH

TEXTURED SECTIONS

See Chart on page 5.

1st row: (RS). Working on long edge of center Motif Panel, join yarn with sl st in right side corner st. Ch 3 (counts as dc). 1 dc in same st. 1 dc in each sc to end of row. Turn. 133 dc.

2nd row: Ch 1. 1 sc in first dc. *Ch 6. Skip 5 dc. 1 sc in next dc. Rep from * to end of row. Turn. 22 ch-6 sps.

3rd row: Ch 1. 1 sc in first sc. (1 sc. 1 hdc. 5 dc. 1 hdc. 1 sc) in each ch-6 sp to last sc. 1 sc in last sc. Turn.

4th row: Ch 5. Skip first: (2 sc. 1 hdc. 2 dc). *1 sc in next dc. Ch 5. Skip next 8 sts. Rep from * to last 5 sts. Ch 2. 1 dc in last sc. **Turn.** Leave rem sts unworked.

5th row: Ch 3. 2 dc in next ch-2 sp. 1 dc in next sc. *5 dc in next ch-5 sp. 1 dc in next sc. Rep from * to last st. 2 dc in last st-sp. 1 dc in 3rd ch of last st. Turn. 133 dc.

6th row: Ch 1. (1 sc. Ch 2. 4 dc) in first dc. *Skip next 3 dc. (1 sc. Ch 2. 4 dc) in next dc. Rep from * to last 4 sts. Skip next 3 sts. 1 sc in top of last st. Turn.

7th row: Ch 2. *Skip next dc. Dc2tog. Skip next dc. Ch 3. 1 sc in next ch-2 sp. Rep from * to end of row. Turn.

8th row: Ch 1. (1 sc. Ch 2. 4 dc) in first sc. *Skip next ch-3 sp and next dc2tog. (1 sc. Ch 2. 4 dc) in next sc. Rep from * to last st. 1 sc in last st. Turn.

9th row: Ch 2. *Skip next dc. Dc2tog. Skip next dc. Ch 3. 1 sc in next ch-2 sp. Rep from * to end of row. Fasten off. **Do not** turn.

With RS facing, join yarn with sl st to top of last st of 9th row.

10th row: (RS). Ch 1. 1 sc in same sp as sl st. *1 sc in dc2tog. 2 sc in next ch-3 sp. 1 sc in next sc. Rep from * to end of row. Turn. 133 sc.

11th row: Ch 1. 1 sc in first sc. *Ch 3. Skip next 2 sc. Dc4togcl in next sc. Ch 3. Skip next 2 sc. 1 sc in next sc. Rep from * to end of row. Turn. 22 dc-cl.

12th row: Ch 5. 1 sc in first dc4togcl. *Ch 2. 1 dc in next sc. Ch 2. 1 sc in next dc4togcl. Rep from * to last sc. Ch 2. 1 dc in last sc. Turn.

13th row: Ch 1. 1 sc in first dc. *2 sc in next ch-2 sp. 1 sc in next sc **. 2 sc in next ch-2 sp. 1 sc in next dc. Rep from * ending at **. 2 sc in last st-sp. 1 sc in 3rd ch of turning ch. Turn. 133 sts.

14th row: Ch 1. 1 sc in each of first 3 sc. Skip next 3 sc. *Shell in next sc. Skip next 3 sc. 1 sc in next sc. Skip next 3 sc. Rep from * to last 7 sc. Shell in next sc. Skip next 3 sc. 1 sc in each of last 3 sc. Turn. 16 shells.

15th row: Ch 3. 1 dc in each of next 2 sc. *Ch 3. Skip next dc2togcl and next ch-2 sp. 1 sc in next dc2togcl. Ch 3. 1 dc in next sc. Rep from * to last 2 sc. 1 dc in each of last 2 sc. Turn.

16th row: Ch 3. 1 dc in next dc. (Dc2togcl. Ch 2. Dc2togcl) all in next dc. *1 sc in next sc. Shell in next dc. Rep from * to last sc. 1 sc in last sc. (Dc2togcl. Ch 2. Dc2togcl) all in next dc. 1 dc in next dc. 1 dc in top of last st. Turn.

17th row: Ch 1. 1 sc in each of first 2 dc. 1 sc in dc-cl. *Ch 3. Skip next ch-2 sp and dc2togcl. 1 dc in next sc. Ch 3. Skip next dc2togcl and ch-2 sp. 1 sc in next dc2togcl. Rep from * to last 2 sts. 1 sc in next dc. 1 sc in top of last st. Turn.

18th row: Ch 1. 1 sc in each of first 3 sc. *Shell in next dc. 1 sc in next sc. Rep from * to last 2 sts. 1 sc in each of last 2 sc. Turn.

19th row: Ch 3. 1 dc in each of next 2 sc. *Ch 3. Skip next dc2togcl and next ch-2 sp. 1 sc in next dc-cl. Ch 3. 1 dc in next sc. Rep from * to last 2 sc. 1 dc in each of last 2 sc. Turn.

20th row: Ch 3. 1 dc in each of next 2 dc. 3 dc in next ch-3 sp. *1 dc in next sc. 3 dc in ch-3 sp. 1 dc in next dc. 3 dc in ch-3 sp. Rep from * to last 3 dc. 1 dc in each of next 2 dc. 1 dc in top of last st. Turn. 133 dc.

21st row: Ch 3. 1 dc in next dc. Skip next dc. *V-st in next dc. Skip next 2 dc. Rep from * to last 4 dc. V-st in next dc. Skip next dc. 1 dc in next dc. 1 dc in top of last st. Turn.

22nd row: Ch 3. 1 dc in each dc and ch-1 sp to last st. 1 dc in top of last st. Turn. 133 dc.

23rd row: Ch 5. Skip first 2 dc. *1 dc in next 2 dc. Ch 2. Skip next 2 dc. Rep from * to last 2 sts. 1 dc in next dc. 1 dc in top of last st. Turn.

24th row: Ch 1. 1 sc in first dc. 1 sc in next dc. *Working over ch, 1 dc in 2 skipped sts from 23rd row.** 1 sc in each of next 2 dc. Rep from * last st, ending at **. 1 sc in 3rd ch of turning ch. Turn. 133 sts.

25th row: Ch 1. 1 sc in first sc.*Ch 3. Skip next 3 sts. (1 sc. Ch 3. 1 sc) in next sc. Rep from * to last 3 sts. Ch 3. Skip next st. 1 sc in last sc. Turn.

26th row: Ch 1. 1 sc in first sc. *Ch 2. Skip next ch-3 sp. (1 sc. Ch 3. 2 sc. Ch 3. 1 sc) in next ch-3 sp. Rep from * to last ch-3 sp. Ch 2. 1 sc in last sc. Turn.

27th row: Ch 6. *1 sc in next ch-3 sp. Ch 1. 1 sc in next ch-3 sp. Ch 3. Rep from * to last sc. 1 dc in last sc. Turn.

28th row: Ch 2. *2 hdc in next ch-3 sp. 1 hdc in next sc. Skip next ch-1 sp. 1 hdc in next sc. Rep from * to last st. 3 hdc in last st-sp. 1 hdc in 3rd ch of turning ch. Turn. 133 hdc.

29th row: Ch 2. 1 hdc in each hdc across. Turn.

30th row: Ch 2. 1 hdc in back loop only of each hdc across. Turn.

31st row: Ch 3. *1 dc in next hdc. 1 dc around post of dc just made. Skip next hdc. Rep from * to last 2 sts. 1 dc in next dc. 1 dc in top of last st. Turn.

32nd row: Ch 3. 1 dc in each dc across. Turn.

33rd row: Ch 3. *1 dc in next dc. 1 dc around post of dc just made. Skip next dc. Rep from * to last 2 sts. 1 dc in next dc. 1 dc in top of last st. Turn.

34th row: Ch 3. 1 dc in each dc across. 1 dc in top of last st. Fasten off. **Do not** turn.

With RS facing, join yarn with sl st to top of last st on 34th row.

35th row: (RS). Ch 1. Sl st loosely in each dc across. Fasten off. **Do not** turn.

Note: Next row joins edge Motif Panel to Textured Section. Motif Panel has 133 sts across long edge to match 133 sts in Textured Section. Motif Panel has 22 sts along first 5 Motifs and 23 sts along last Motif edge). With RS facing, join yarn with sl st in top of last st of 34th row (behind sl sts of 35th row).

36th row: Ch 3. *Yoh and draw up a loop. Yoh and draw through 2 loops on hook. Insert hook in adjacent st of Motif Panel. Yoh and draw through st on Motif Panel and 2 loops on hook – 1 dc join worked. 1 dc join in each st of 34th row (behind sl sts of 35th row), joining Motif Panel as you work.*

Rep 1st to 36th rows joining 2nd Textured Section to opposite side of center Motif Panel.

BORDER

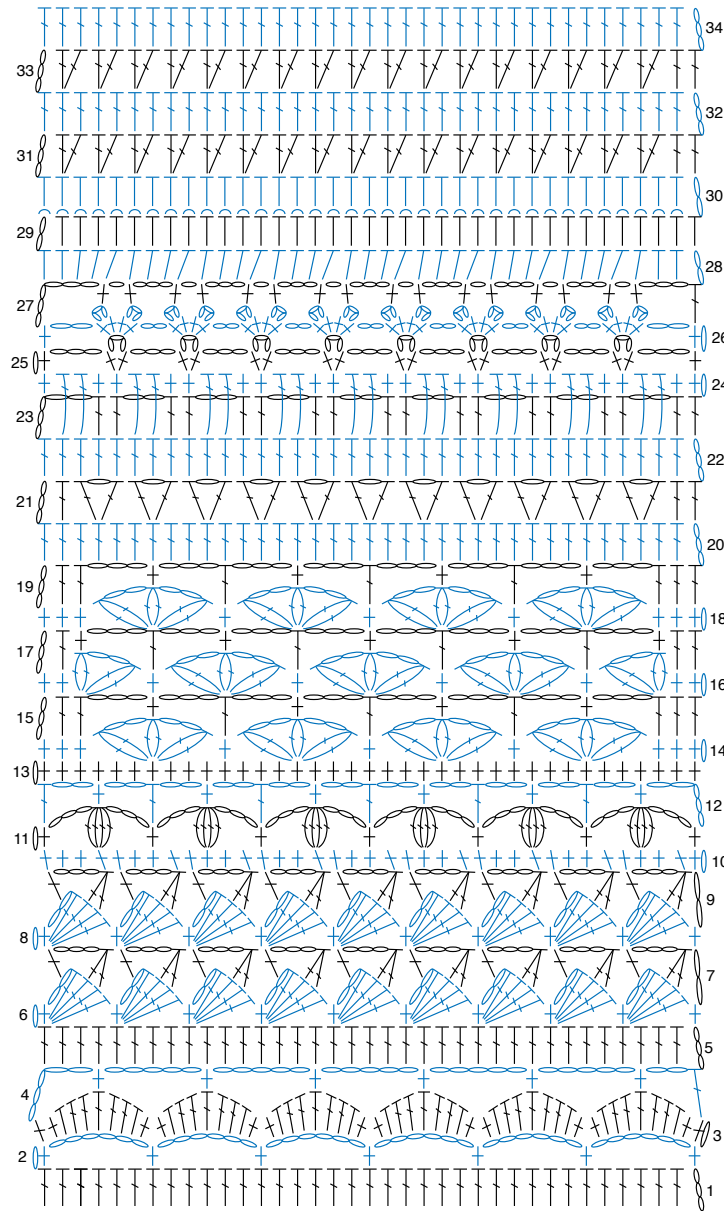
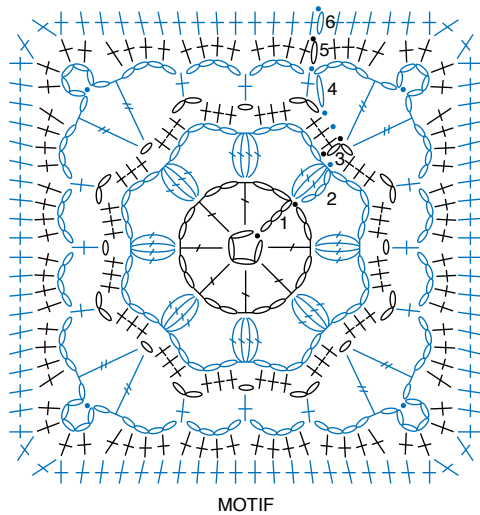
1st rnd: (RS). Join yarn with sl st to corner on edge Motif Panel. *1 sc in each sc across Motif Panel to corner. 2 sc in each of next corner 2 sc. 1 sc in each sc across Motif Panel. 1 sc evenly along edge of Textured Section. 1 sc in each sc across Motif Panel to corner. 2 sc in each of next corner 2 sc. Rep from * around. Join with sl st to first sc.

2nd rnd: Ch 1. *1 sc in each sc to corner. 2 sc in each of next corner 2 sc. Rep from *around. Join with sl st to first sc.

3rd rnd: Ch 3. *1 dc in each sc to corner. 2 dc in each of next corner 2 dc. Rep from * around. Join with sl st to top of last st.

4th rnd: Ch 1. 1 sc in each st around. Join with sl st to first sc. Fasten off.





- STITCH KEY**
- = chain (ch)
 - = slip stitch (sl st)
 - ⊥ = single crochet (sc)
 - ┆ = half double crochet (hdc)
 - ┆ = double crochet (dc)
 - ┆ = treble crochet (tr)
 - ┆ = double crochet 2 together (dc2tog)
 - ⌢ = 2 double crochet cluster (2dc-cl)
 - ⌢ = 3 double crochet cluster (3dc-cl)
 - ⌢ = 4 double crochet cluster (4dc-cl)
 - ⌢ = picot
 - ⌢ = worked in back loop only