



CROCHET | SKILL LEVEL: INTERMEDIATE

ABBREVIATIONS

Approx = Approximately

Beg = Beginning

Beg Block = Ch 3 (counts as dc).
1 extended dc in each of next 2 sts.

Block = 1 extended dc in each of next 3 stitches.

Ch = Chain(s)

Cont = Continue(ity)

Dc = Double crochet

Extended dc = Yoh and draw up a loop in next stitch. Yoh and draw through 1 loop on hook. (Yoh and draw through 2 loops on hook) twice.

Mesh = 1 extended dc in next stitch. Ch 2. Skip next 2 sts.

Pat = Pattern

Rep(s) = Repeat(s)

RS = Right side

Sp(s) = Space(s)

St(s) = Stitch(es)

WS = Wrong side

Yoh = Yarn over hook

MEASUREMENTS

Approx 53¾" x 54½" [136.5 x 138.5 cm].

GAUGE

15 sts (5 blocks) and 5.5 rows = 4" [10 cm] in pat.

INSTRUCTIONS

Notes:

- Pattern uses extended dc throughout in place of standard dc.
- Ch 3 at beg of rows counts as dc.
- Ch-2 sp counts as 2 sts (each ch-1 sp counts as 1 st).
- When working into ch-2 sp, work into space not chain.
- After last Block, each row ends with extended dc in last st (top of turning ch-3). Not shown on Chart.

MATERIALS

Red Heart® Super Saver® (7 oz/198 g; 364 yds/333 m)

Frosty Green (0661)

5 balls or 1812 yds/1657 m

Size U.S. I/9 (5.5 mm) crochet hook **or size needed to obtain gauge.**
Yarn needle.

THROW

Ch 204.

See chart on page 3.

1st row: (RS). 1 extended dc in 4th ch from hook (counts as 2 sts). 1 extended dc in each ch to end of chain. Turn. 202 extended dc. 1st row of Chart is complete.

Work Chart to end of chart, *reading RS rows from right to left and WS rows from left to right* as follows:

2nd row: Ch 3. 1 extended dc in each of next 2 sts – Beg Block made. *1 extended dc in next st. Ch 2. Skip next 2 sts – Mesh made. 1 extended dc in each of next 3 sts – Block made. (Mesh) 61 times. (Block) once. (Mesh) once. (Block) once. 1 dc in last st. Turn.

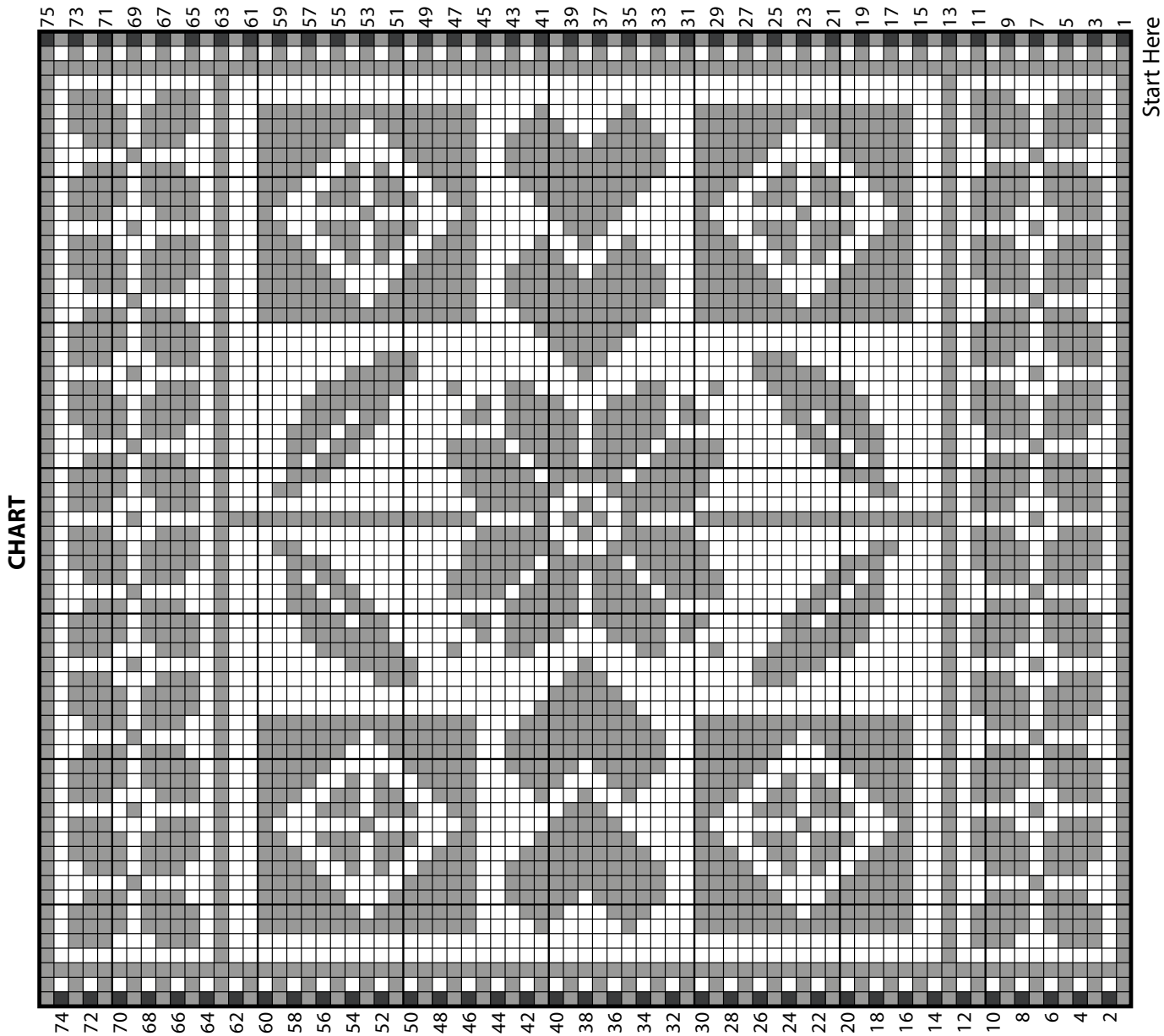
3rd row: Beg Block. (Block) twice. *(Mesh) once. (Block) 3 times. (Mesh) 3 times. (Block) 3 times. Rep from * 5 times more. (Mesh) once. (Block) 3 times. 1 extended dc in last st. Turn.

4th row: Beg Block. (Mesh) once. (Block) once. *(Mesh) once. (Block) 4 times. (Mesh) once. (Block) 4 times. Rep from * 5 times more. Mesh (once). (Block) once. (Mesh) once. (Block) once. 1 extended dc in last st. Turn.

First 4 rows of Chart are complete.

Cont to work Chart to end of chart. Fasten off.





Key

- = Beg Block (Ch 3, 1 extended dc in each of next 2 sts.)
- ▣ = Block (1 extended dc in each of next 3 sts.)
- = Mesh (1 extended dc in next st. Ch 2. Skip next 2 sts.)