



CROCHET | SKILL LEVEL: INTERMEDIATE

## ABBREVIATIONS

<b>Approx</b> =	<b>Dc</b> = Double crochet	<b>RS</b> = Right side
Approximately	<b>Dec</b> = Decrease	<b>Sl st</b> = Slip stitch
<b>Beg</b> = Begin(ning)(s)	<b>Rem</b> = Remaining	<b>Sp(s)</b> = Space(s)
<b>Ch</b> = Chain(s)	<b>Rep</b> = Repeat	<b>St(s)</b> = Stitch(es)
<b>Cont</b> = Continue(ity)	<b>Rnd</b> = Round	<b>Yoh</b> = Yarn over hook

## MEASUREMENTS

Approx 50" x 59" [127 x 150 cm]

## GAUGE

12 dc and 8 rows = 4" [10 cm].

## INSTRUCTIONS

### Notes:

- Blanket is worked diagonally from corner to corner.
- When working from Chart, wind small balls of the colors to be used, one for each separate area of color in the design.
- Start new colors at appropriate points. To change color, work to last 2 loops on hook, yoh with new color, pull through 2 loops on hook to complete st and proceed in new color.

With A, ch 6. See crochet diagram on page 2 and Blanket Chart on page 3. Each square of chart represents 1 block.

**1st row:** (RS). 1 dc in 4th ch from hook (counts as 2 dc). 1 dc in each of last 2 ch. Turn. 1 block made.

**2nd row:** Ch 6. 1 dc in 4th ch from hook. 1 dc in each of next 2 ch – beg block made. (Sl st. Ch 3. 3 dc) in next ch-3 sp – block made. Turn. 2 blocks.

**3rd row:** Beg block. \*Block in next ch-3 sp. Rep from \* to end of row. Turn. 3 blocks.

Keeping cont of color changes in Chart (each square on grid represents 1 block), rep last row until 60th row of chart is complete. 60 blocks.

## MATERIALS

Red Heart® Super Saver® (7 oz/198 g; 364 yds/333 m)

<b>Contrast A</b> Gold (0321)	<b>1 ball</b>
<b>Contrast B</b> Soft Navy (0387)	<b>3 balls</b>
<b>Contrast C</b> Soft White (0316)	<b>3 balls</b>
<b>Contrast D</b> Light Gray (0341)	<b>2 balls</b>
<b>Contrast E</b> Rosy (0177)	<b>2 balls</b>

Size U.S. I/9 (5.5 mm) crochet hook **or size needed to obtain gauge.**  
Yarn needle. Piece of cardboard 6" [15 cm] wide for tassels.

Keeping cont of Chart, proceed as follows to work sides even:

**61st row:** Sl st in each of first 3 dc. \*Block in next ch-3 sp. Rep from \* to end of row. Turn.

**62nd row:** Beg block. \*Block in next ch-3 sp. Rep from \* to last ch-3 sp. Sl st in last ch-3 sp. (**Do not** make a block.) Turn.

**63rd to 72nd rows:** Rep last 2 rows 5 times more.

Keeping cont of Chart, proceed as follows to dec corner:

**73rd row:** Sl st in each of first 3 dc. \*Block in next ch-3 sp. Rep from \* to last ch-3 sp. Sl st in last ch-3 sp. (**Do not** make a block). Turn.

Keeping cont of Chart, rep last row until 1 block rem. Fasten off.

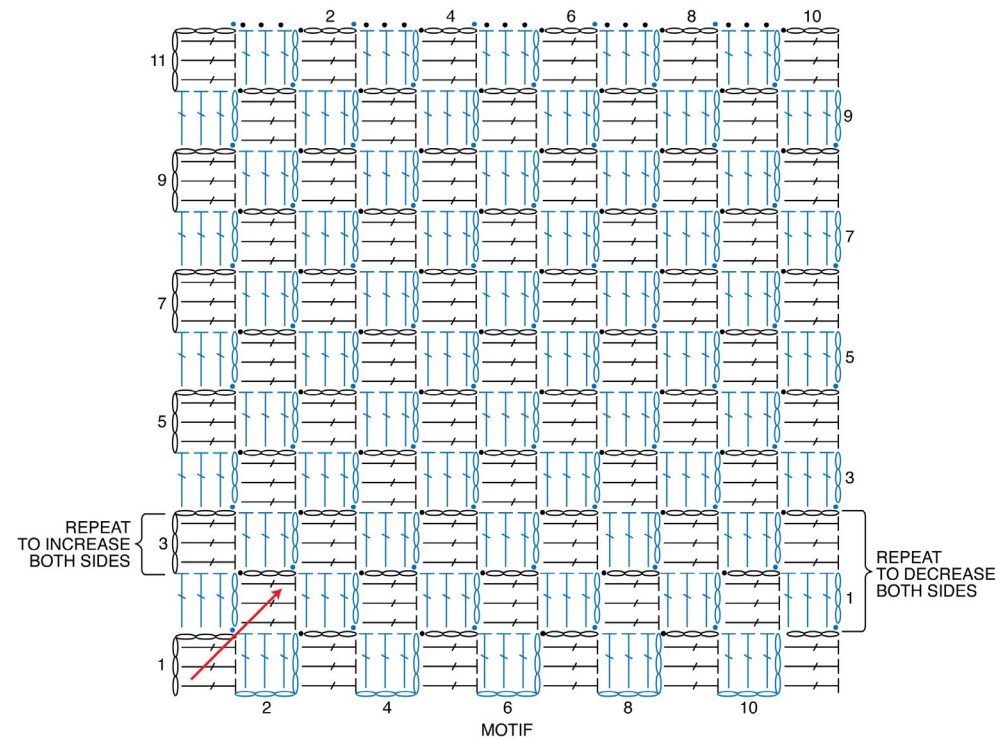
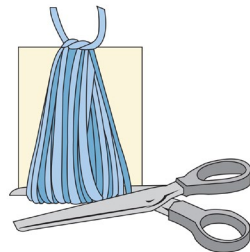
**Edging:** With RS facing, join B with sl st to any corner.

**1st rnd:** Ch 3 (counts as dc). Work dc evenly around, working 5 dc in each corner. Join with sl st to top of ch 3.

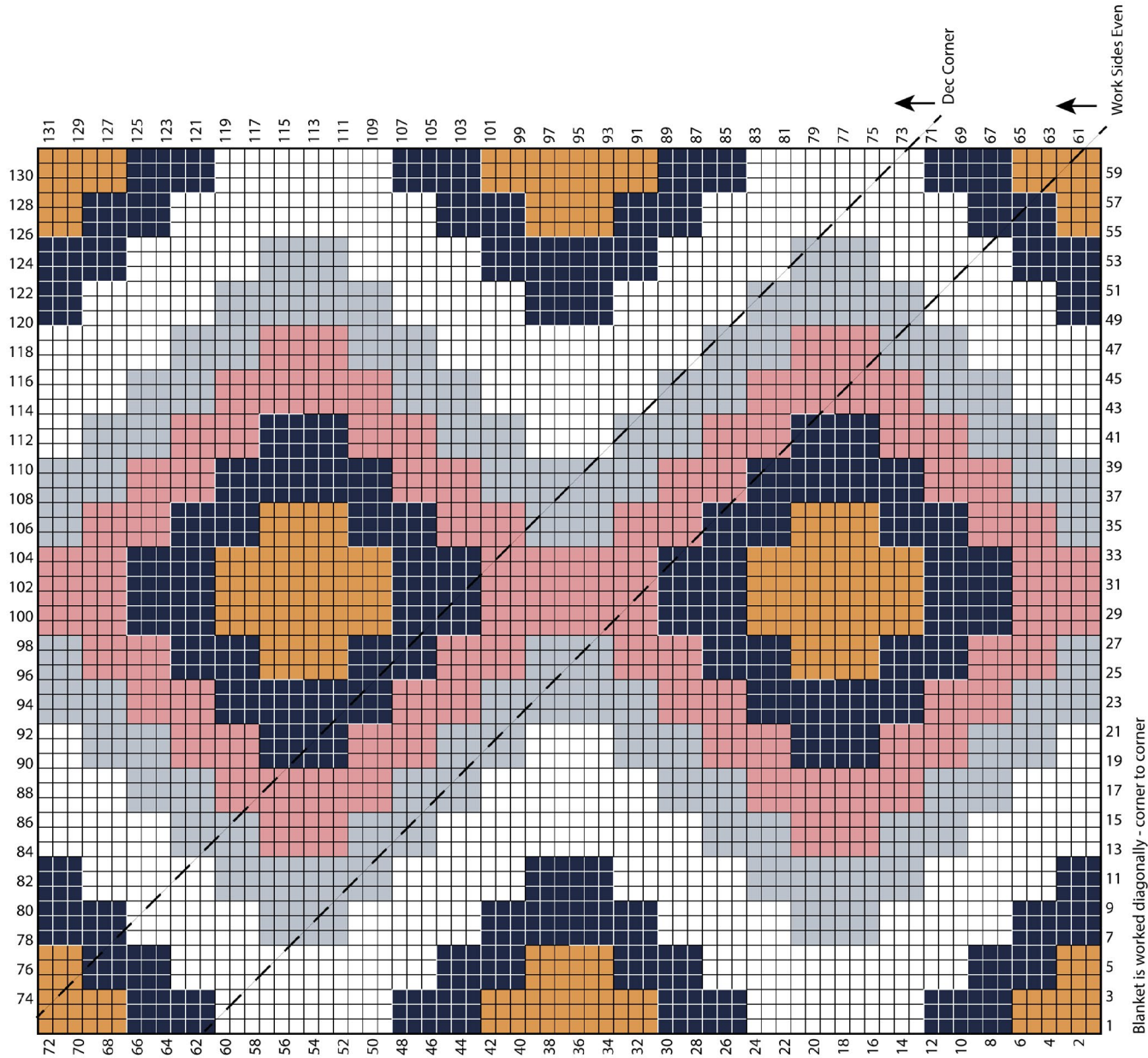
**2nd rnd:** Ch 3. 1 dc in each dc around, working 5 dc in each corner dc. Join with sl st to top of ch 3. Fasten off.

**Tassels** (make 4 with C)

Cut a piece of cardboard 6" [15 cm] wide. Wind yarn around cardboard 120 times. Break yarn leaving a long end and thread end through needle. Slip needle through all loops and tie tightly. Remove cardboard and wind yarn tightly around loops 1" [2.5 cm] below fold. Fasten securely. Cut through rem loops and trim ends evenly. Sew 1 Tassel to each corner of Blanket.



STITCH KEY  
 ○ = chain (ch)  
 ● = slip stitch (sl st)  
 ┆ = double crochet (dc)



Blanket is worked diagonally - corner to corner



- Key**
- = Contrast A
  - = Contrast B
  - = Contrast C
  - = Contrast D
  - = Contrast E