



MATERIALS

Red Heart® Super Saver® (7 oz/198 g; 364 yds/333 m)

Contrast A Rosy (0177) **1 ball or 46 yds/42 m**

Contrast B Aran (0313) **1 ball or 36 yds/33 m**

Note: 1 ball each of Contrast A and Contrast B will make 8 Blocks.

Size U.S. I/9 (5.5 mm) crochet hook **or size needed to obtain gauge.**
Yarn needle.

ABBREVIATIONS

Approx =

Approximately

Beg = Beginning

Ch = Chain(s)

Cont = Continue(ity)

Dc = Double crochet

Rem = Remaining

Rep = Repeat

RS = Right side

St(s) = Stitch(es)

WS = Wrong side



CROCHET | SKILL LEVEL: **EASY**

MEASUREMENTS

Approx 7" x 9" [18 x 23 cm].

GAUGE

12 dc and 7.5 rows = 4" [10 cm].

INSTRUCTIONS

Notes:

- Ch 3 at beg of row counts as dc throughout.
- To change color, work to last 2 loops on hook. Draw loop of next color through 2 loops on hook to complete st and proceed in next color.

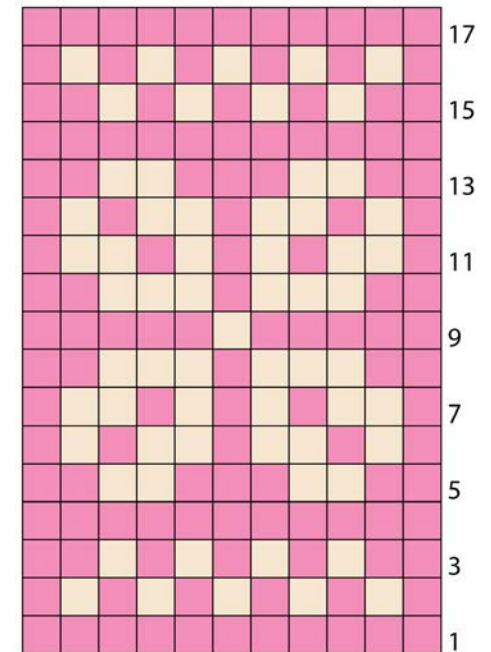
With A, ch 24.


Work Chart, noting each square of chart is equal to 2 dc and *reading RS rows from right to left and WS rows from left to right*. Carry color not in use across top of entire previous row and work sts around it. This will ensure even gauge as all sts will be worked around an extra strand of yarn held across top of previous row. Carry both colors up side of work.


1st row: (RS). 1 dc in 4th ch from hook (counts as 2 dc). 1 dc in each ch to end of chain. Turn. 22 dc.

2nd row: Ch 3. 1 dc in each dc to end of row. Turn.

Rep 2nd row and cont working Chart until 17th row of chart is complete. Fasten off.



 = Contrast A

 = Contrast B